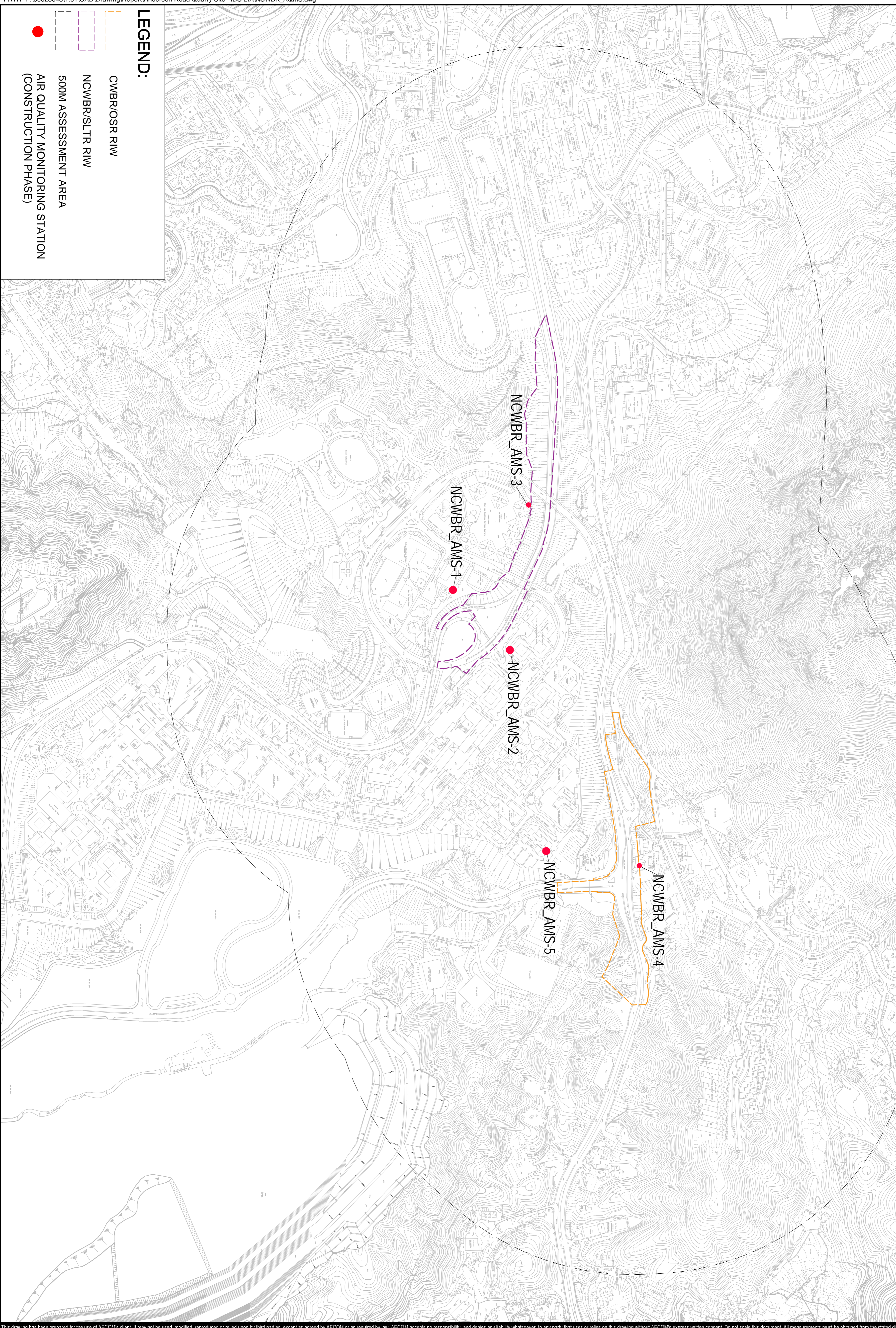


Monitoring Station ID	EIA ID	Location
NCWBR_RIW		
NCWBR_AMS-1	ASLE-1	Shun Lee Fire Station
NCWBR_AMS-2	ASLE-21	Shun Lee Estate Lee Hang House
NCWBR_AMS-3	ASLD-10	Shun Lee Disciplined Services Quarters (Block 6)
NCWBR_AMS-4	AFNS-3	Sienna Garden
NCWBR_AMS-5	ASCC-05	Shun Chi Court Shun Fung House



LEGEND:

- CWBROS R/W
- NCWBR SLTR R/W
- 500M ASSESSMENT AREA
- AIR QUALITY MONITORING STATION (CONSTRUCTION PHASE)

This drawing has been prepared for the use of AECOM's client. It may not be used, modified, reproduced or relied upon by third parties, except as agreed by AECOM or as required by law. AECOM accepts no responsibility, and denies any liability whatsoever, to any party that uses or relies on this drawing without AECOM's express written consent. Do not scale this document. All measurements must be obtained from the stated dimensions.



Project
 DEVELOPMENT OF
 ANDERSON ROAD
 QUARRY SITE -
 INVESTIGATION, DESIGN
 AND CONSTRUCTION

CLIENT
 CEDD
 土木工程拓展署
 Civil Engineering and
 Development Department

CONSULTANT
 AECOM
 AECOM Asia Company Ltd.
 www.aecom.com

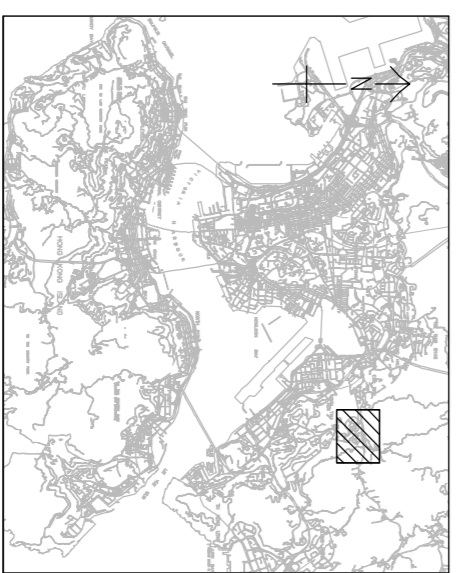
ISSUE/REVISION

NO.	DATE	DESCRIPTION	CHK.

STATUS

SCALE
 A3 1 : 7000

KEY PLA



PROJECT NO. 60328348
CONTRACT NO. CE 10/2014 (CE)

SHEET TITLE
 LOCATIONS OF AIR QUALITY
 MONITORING STATION
 (NCWBR R/W)

SHEET NUMBER
 60328348/EM&A_RIW/Figure 2.1