





Monitoring Location ID	Description
Noise Monitoring Station (Construction Phase)	
NMC01	Kei Shun Special School
NMC02	Shun Lee Disciplined Services Quarters Block 6
NMC03	Sienna Garden Block 6

LEGEND:

-  Proposed Noise Monitoring Station (Construction Phase)
-  J/O Clear Water Bay Road and On Sau Road
-  J/O New Clear Water Bay Road and Shun Lee Tsuen Road
-  300m Assessment Area



PROJECT

DEVELOPMENT OF
ANDERSON ROAD
QUARRY SITE -
INVESTIGATION, DESIGN
AND CONSTRUCTION

CLIENT



CONSULTANT

AECOM Asia Company Ltd.
www.aecom.com

ISSUE/REVISION

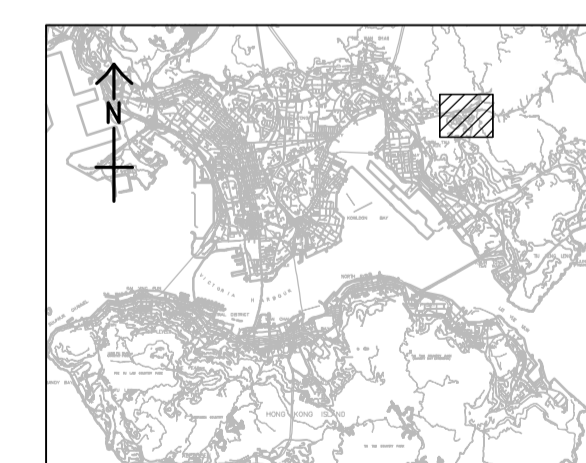
I/R	DATE	DESCRIPTION	CHK.

STATUS

SCALE

A3 1 : 6000

KEY PLA



PROJECT NO.

60328348

CONTRACT NO.

CE 10/2014 (CE)

SHEET TITLE

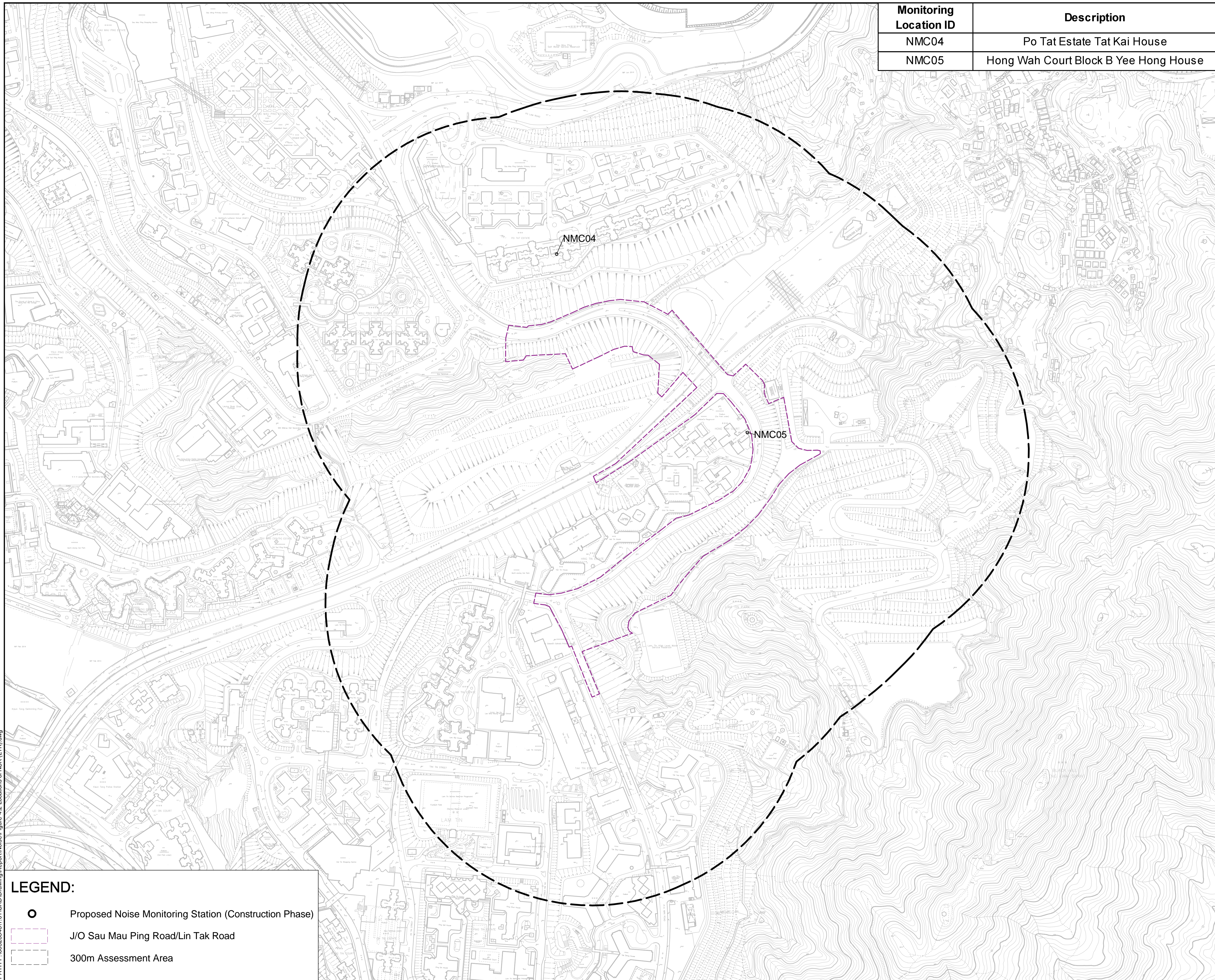
Location of Noise Monitoring Station
(Construction Phase)

SHEET NUMBER

60328348/EM&A_RII/FIGURE 3.1

This drawing has been prepared for the use of AECOM's client. It may not be used, modified, reproduced or relied upon by third parties, except as agreed by AECOM in writing. AECOM accepts no responsibility, and denies any liability whatsoever, to any party, that uses or relies on this drawing without AECOM's express written consent. All measurements must be obtained from the stated dimensions.

Monitoring Location ID	Description
NMC04	Po Tat Estate Tat Kai House
NMC05	Hong Wah Court Block B Yee Hong House



LEGEND:

	Proposed Noise Monitoring Station (Construction Phase)
	J/O Sau Mau Ping Road/Lin Tak Road
	300m Assessment Area



PROJECT
項目
DEVELOPMENT OF
ANDERSON ROAD
QUARRY SITE -
INVESTIGATION, DESIGN
AND CONSTRUCTION

CLIENT
業主
 土木工程拓展署
Civil Engineering and
Development Department

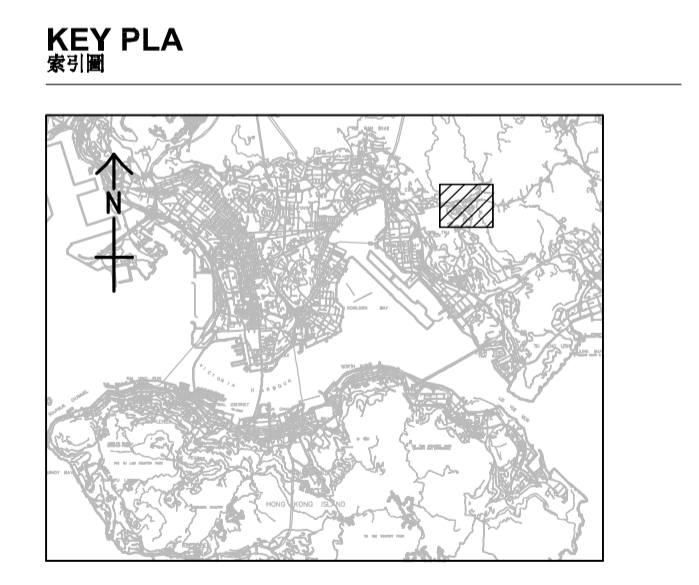
CONSULTANT
土庫顧問公司
AECOM Asia Company Ltd.
www.aecom.com

ISSUE/REVISION
修訂

I/R	DATE	DESCRIPTION	CHK.
修訂	日期	內容摘要	核對

STATUS
階段

SCALE
比例
A3 1 : 5000



PROJECT NO. 項目編號
60328348

CONTRACT NO. 合約編號
CE 10/2014 (CE)

SHEET TITLE
圖紙名稱
Location of Noise Monitoring Station
(Construction Phase)

SHEET NUMBER
圖紙編號
60328348/EM&A_RIW/FIGURE 3.1

This drawing has been prepared for the use of AECOM's client. It may not be used, modified, reproduced or relied upon by third parties, except as agreed by AECOM in writing. AECOM accepts no responsibility, and denies any liability whatsoever, to any party that uses or relies on this drawing without AECOM's express written consent. Do not scale this document. All measurements must be obtained from the stated dimensions.