

Monitoring Location ID	Description
Noise Monitoring Station (Operational Phase)	
NMT01	Shun Lee Disciplined Services Quarters Block 7
NMT02	Shun Lee Estate Lee Ming House
NMT03	Sienna Garden Block 6

**LEGEND:**

	Proposed Noise Monitoring Station (Operational Phase)
	J/O Clear Water Bay Road and On Sau Road
	J/O New Clear Water Bay Road and Shun Lee Tsuen Road
	300m Assessment Area

**ISSUE/REVISION**  
修訂

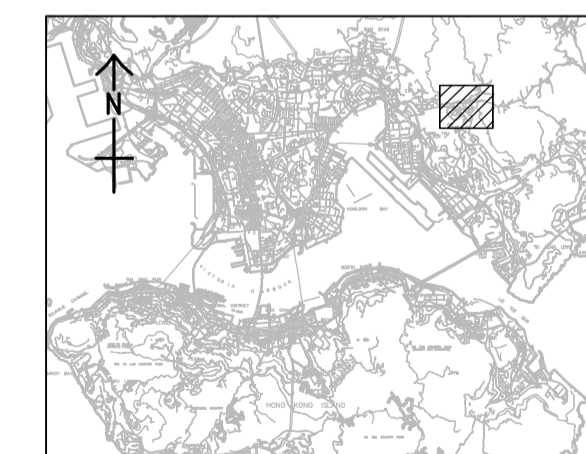
I/R 修訂	DATE 日期	DESCRIPTION 內容摘要	CHK. 核對

**STATUS**  
階段

**SCALE**  
比例

A3 1 : 6000

**KEY PLA**  
索引圖



**PROJECT NO.**  
項目編號

60328348

**CONTRACT NO.**  
合約編號

CE 10/2014 (CE)

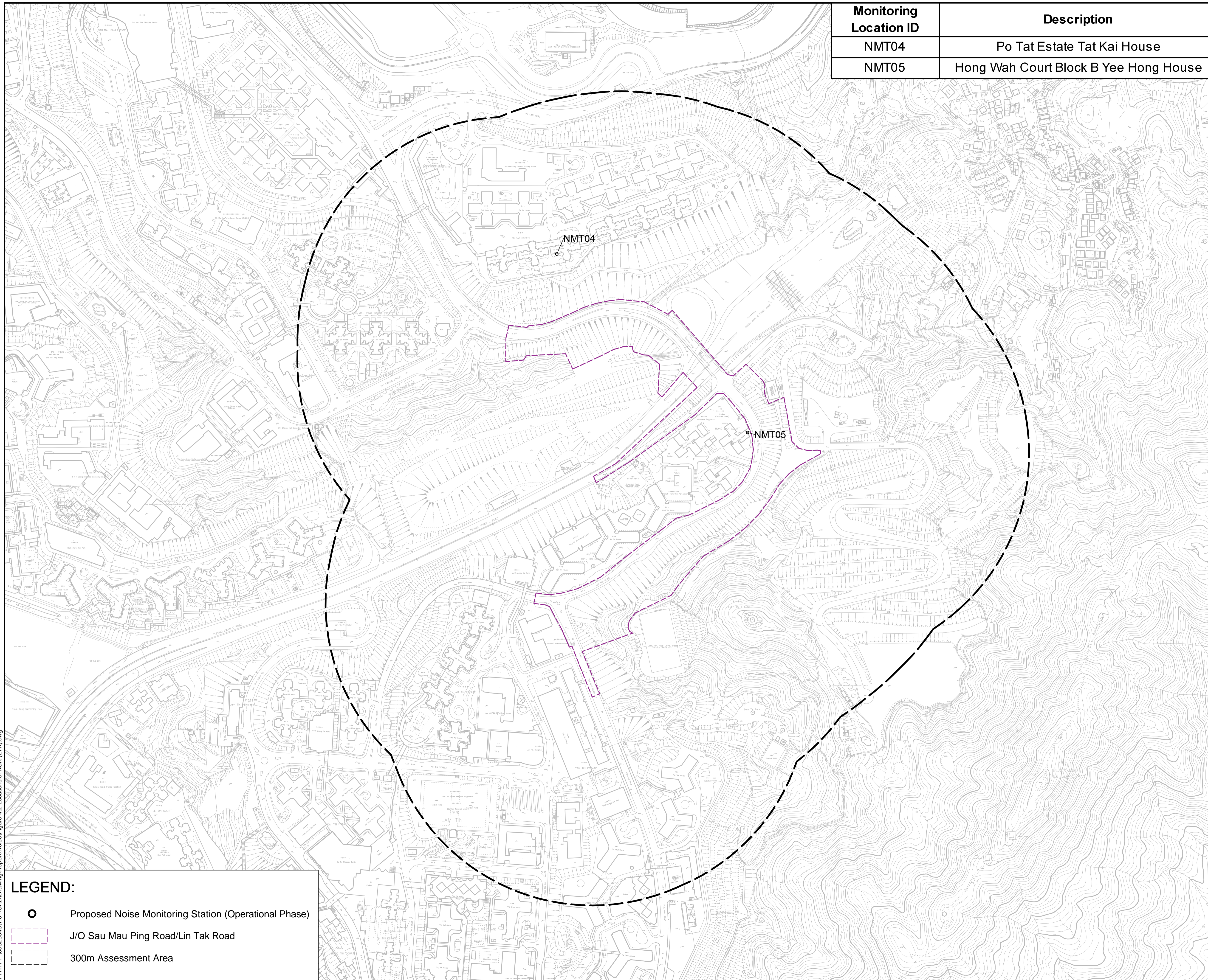
**SHEET TITLE**  
圖紙名稱

Location of Noise Monitoring Station  
(Operational Phase)

**SHEET NUMBER**  
圖紙編號

60328348/EM&A\_RIW/FIGURE 3.2

This drawing has been prepared for the use of AECOM's client. It may not be used, modified, reproduced or relied upon by third parties, except as agreed by AECOM in writing. AECOM accepts no responsibility, and denies any liability whatsoever, to any party, that uses or relies on this drawing without AECOM's express written consent. All measurements must be obtained from the stated dimensions.



Monitoring Location ID	Description
NMT04	Po Tat Estate Tat Kai House
NMT05	Hong Wah Court Block B Yee Hong House

**LEGEND:**

- Proposed Noise Monitoring Station (Operational Phase)
- J/O Sau Mau Ping Road/Lin Tak Road
- 300m Assessment Area



**PROJECT**  
項目  
DEVELOPMENT OF  
ANDERSON ROAD  
QUARRY SITE -  
INVESTIGATION, DESIGN  
AND CONSTRUCTION

**CLIENT**  
業主  
 土木工程拓展署  
Civil Engineering and  
Development Department

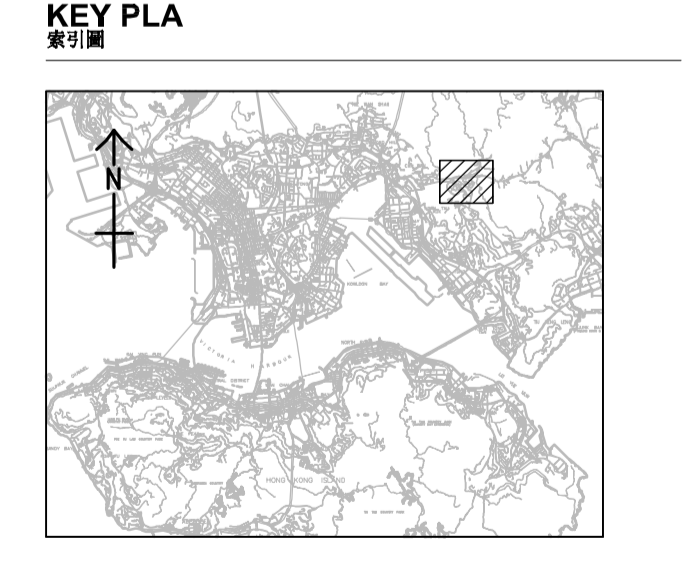
**CONSULTANT**  
工程顧問公司  
AECOM Asia Company Ltd.  
www.aecom.com

**ISSUE/REVISION**  
修訂

I/R	DATE	DESCRIPTION	CHK.
修訂	日期	內容摘要	核對

**STATUS**  
階段

**SCALE**  
比例  
A3 1 : 5000



**PROJECT NO.** 項目編號  
60328348

**CONTRACT NO.** 合約編號  
CE 10/2014 (CE)

**SHEET TITLE**  
圖紙名稱  
Location of Noise Monitoring Station  
(Operational Phase)

**SHEET NUMBER**  
圖紙編號  
60328348/EM&A\_RIW/FIGURE 3.2

This drawing has been prepared for the use of AECOM's client. It may not be used, modified, reproduced or relied upon by third parties, except as agreed by AECOM in writing. AECOM accepts no responsibility, and denies any liability whatsoever, to any party that uses or relies on this drawing without AECOM's express written consent. All measurements must be obtained from the stated dimensions.