

Appendix 4.2 Details of Portal Emissions (Construction Phase)

Agreement No. CE 10/2014 (CE)
 Development of Anderson Road Quarry Site- Investigation, Design and Construction
 EIA Report on Road Improvement Works

Portal Emissions Inventory for Road Improvement Works in Lin Tak Road/Sau Mau Ping Road

24 hour RSP Emission Factor (g/mile-veh) and Traffic Profile (Year 2018)

Location	Source Description	Direction	Tunnel Length (m)	Tunnel Length (mile)	Traffic Flow and Emission Factor (g/mile-veh)																																															
					Hour 01		Hour 02		Hour 03		Hour 04		Hour 05		Hour 06		Hour 07		Hour 08		Hour 09		Hour 10		Hour 11		Hour 12		Hour 13		Hour 14		Hour 15		Hour 16		Hour 17		Hour 18		Hour 19		Hour 20		Hour 21		Hour 22		Hour 23		Hour 24	
					Flow (veh/hr)	Emf (g/mile-veh)	Flow (veh/hr)	Emf (g/mile-veh)	Flow (veh/hr)	Emf (g/mile-veh)	Flow (veh/hr)	Emf (g/mile-veh)	Flow (veh/hr)	Emf (g/mile-veh)	Flow (veh/hr)	Emf (g/mile-veh)	Flow (veh/hr)	Emf (g/mile-veh)	Flow (veh/hr)	Emf (g/mile-veh)	Flow (veh/hr)	Emf (g/mile-veh)	Flow (veh/hr)	Emf (g/mile-veh)	Flow (veh/hr)	Emf (g/mile-veh)	Flow (veh/hr)	Emf (g/mile-veh)	Flow (veh/hr)	Emf (g/mile-veh)	Flow (veh/hr)	Emf (g/mile-veh)	Flow (veh/hr)	Emf (g/mile-veh)	Flow (veh/hr)	Emf (g/mile-veh)	Flow (veh/hr)	Emf (g/mile-veh)	Flow (veh/hr)	Emf (g/mile-veh)	Flow (veh/hr)	Emf (g/mile-veh)	Flow (veh/hr)	Emf (g/mile-veh)	Flow (veh/hr)	Emf (g/mile-veh)	Flow (veh/hr)	Emf (g/mile-veh)	Flow (veh/hr)	Emf (g/mile-veh)		
Tseung Kwan O Tunnel	Tseung Kwan O Tunnel (WB) Tunnel Portal at Kwun Tong Side	To Kwun Tong	857	0.5325	1070	0.017	747	0.017	555	0.017	394	0.018	464	0.014	534	0.038	1176	0.038	3035	0.039	3451	0.039	3190	0.034	2716	0.033	2448	0.038	2334	0.044	1906	0.044	1945	0.041	2070	0.043	2189	0.045	2492	0.042	2774	0.030	2451	0.026	1898	0.021	1860	0.023	1918	0.017	1596	0.017

24 hour RSP Emission Rate - Tunnel Portals (100% of Total Emission)

Location	Source Description	Direction	Tunnel Length (m)	Tunnel Length (mile)	Emission Rate																																															
					Hour 01		Hour 02		Hour 03		Hour 04		Hour 05		Hour 06		Hour 07		Hour 08		Hour 09		Hour 10		Hour 11		Hour 12		Hour 13		Hour 14		Hour 15		Hour 16		Hour 17		Hour 18		Hour 19		Hour 20		Hour 21		Hour 22		Hour 23		Hour 24	
					(g/hr)	(g/s)	(g/hr)	(g/s)	(g/hr)	(g/s)	(g/hr)	(g/s)	(g/hr)	(g/s)	(g/hr)	(g/s)	(g/hr)	(g/s)	(g/hr)	(g/s)	(g/hr)	(g/s)	(g/hr)	(g/s)	(g/hr)	(g/s)	(g/hr)	(g/s)	(g/hr)	(g/s)	(g/hr)	(g/s)	(g/hr)	(g/s)	(g/hr)	(g/s)	(g/hr)	(g/s)	(g/hr)	(g/s)	(g/hr)	(g/s)	(g/hr)	(g/s)	(g/hr)	(g/s)	(g/hr)	(g/s)	(g/hr)	(g/s)	(g/hr)	(g/s)
Tseung Kwan O Tunnel	Tseung Kwan O Tunnel (WB) Tunnel Portal at Kwun Tong Side	To Kwun Tong	857	0.5325	9.59E+00	2.66E-03	6.70E+00	1.86E-03	5.08E+00	1.41E-03	3.71E+00	1.03E-03	3.37E+00	9.37E-04	1.07E+01	2.98E-03	2.37E+01	6.58E-03	6.33E+01	1.76E-02	7.25E+01	2.01E-02	5.84E+01	1.62E-02	4.80E+01	1.33E-02	4.97E+01	1.38E-02	5.45E+01	1.51E-02	4.43E+01	1.23E-02	4.29E+01	1.19E-02	4.77E+01	1.32E-02	5.19E+01	1.44E-02	5.63E+01	1.56E-02	4.47E+01	1.24E-02	3.37E+01	9.35E-03	2.08E+01	5.77E-03	2.30E+01	6.39E-03	1.72E+01	4.78E-03	1.44E+01	4.00E-03

Appendix 4.2 Details of Portal Emissions (Construction Phase)

Agreement No. CE 10/2014 (CE)
 Development of Anderson Road Quarry Site- Investigation, Design and Construction
 EIA Report on Road Improvement Works

Portal Emissions Inventory for Road Improvement Works in Lin Tak Road/Sau Mau Ping Road

24 hour FSP Emission Factor (g/mile-veh) and Traffic Profile (Year 2018)

Location	Source Description	Direction	Tunnel Length (m)	Tunnel Length (mile)	Traffic Flow and Emission Factor (g/mile-veh)																																															
					Hour 01		Hour 02		Hour 03		Hour 04		Hour 05		Hour 06		Hour 07		Hour 08		Hour 09		Hour 10		Hour 11		Hour 12		Hour 13		Hour 14		Hour 15		Hour 16		Hour 17		Hour 18		Hour 19		Hour 20		Hour 21		Hour 22		Hour 23		Hour 24	
					Flow (veh/hr)	Emf (g/mile-veh)	Flow (veh/hr)	Emf (g/mile-veh)	Flow (veh/hr)	Emf (g/mile-veh)	Flow (veh/hr)	Emf (g/mile-veh)	Flow (veh/hr)	Emf (g/mile-veh)	Flow (veh/hr)	Emf (g/mile-veh)	Flow (veh/hr)	Emf (g/mile-veh)	Flow (veh/hr)	Emf (g/mile-veh)	Flow (veh/hr)	Emf (g/mile-veh)	Flow (veh/hr)	Emf (g/mile-veh)	Flow (veh/hr)	Emf (g/mile-veh)	Flow (veh/hr)	Emf (g/mile-veh)	Flow (veh/hr)	Emf (g/mile-veh)	Flow (veh/hr)	Emf (g/mile-veh)	Flow (veh/hr)	Emf (g/mile-veh)	Flow (veh/hr)	Emf (g/mile-veh)	Flow (veh/hr)	Emf (g/mile-veh)	Flow (veh/hr)	Emf (g/mile-veh)	Flow (veh/hr)	Emf (g/mile-veh)	Flow (veh/hr)	Emf (g/mile-veh)	Flow (veh/hr)	Emf (g/mile-veh)	Flow (veh/hr)	Emf (g/mile-veh)	Flow (veh/hr)	Emf (g/mile-veh)		
Tseung Kwan O Tunnel	Tseung Kwan O Tunnel (WB) Tunnel Portal at Kwun Tong Side	To Kwun Tong	857	0.5325	1070	0.015	747	0.015	555	0.016	394	0.016	464	0.012	534	0.035	1176	0.035	3035	0.036	3451	0.036	3190	0.032	2716	0.030	2448	0.035	2334	0.040	1906	0.040	1945	0.038	2070	0.040	2189	0.041	2492	0.039	2774	0.028	2451	0.024	1898	0.019	1860	0.021	1918	0.015	1596	0.016

24 hour FSP Emission Rate - Tunnel Portals (100% of Total Emission)

Location	Source Description	Direction	Tunnel Length (m)	Tunnel Length (mile)	Emission Rate																																															
					Hour 01		Hour 02		Hour 03		Hour 04		Hour 05		Hour 06		Hour 07		Hour 08		Hour 09		Hour 10		Hour 11		Hour 12		Hour 13		Hour 14		Hour 15		Hour 16		Hour 17		Hour 18		Hour 19		Hour 20		Hour 21		Hour 22		Hour 23		Hour 24	
Flow (g/hr)	(g/s)	Flow (g/hr)	(g/s)	Flow (g/hr)	(g/s)	Flow (g/hr)	(g/s)	Flow (g/hr)	(g/s)	Flow (g/hr)	(g/s)	Flow (g/hr)	(g/s)	Flow (g/hr)	(g/s)	Flow (g/hr)	(g/s)	Flow (g/hr)	(g/s)	Flow (g/hr)	(g/s)	Flow (g/hr)	(g/s)	Flow (g/hr)	(g/s)	Flow (g/hr)	(g/s)	Flow (g/hr)	(g/s)	Flow (g/hr)	(g/s)	Flow (g/hr)	(g/s)	Flow (g/hr)	(g/s)	Flow (g/hr)	(g/s)	Flow (g/hr)	(g/s)	Flow (g/hr)	(g/s)	Flow (g/hr)	(g/s)	Flow (g/hr)	(g/s)	Flow (g/hr)	(g/s)					
Tseung Kwan O Tunnel	Tseung Kwan O Tunnel (WB) Tunnel Portal at Kwun Tong Side	To Kwun Tong	857	0.5325	8.79E+00	2.44E-03	6.14E+00	1.71E-03	4.65E+00	1.29E-03	3.40E+00	9.45E-04	3.08E+00	8.57E-04	9.87E+00	2.74E-03	2.17E+01	6.04E-03	5.81E+01	1.61E-02	6.65E+01	1.85E-02	5.36E+01	1.49E-02	4.41E+01	1.22E-02	4.57E+01	1.27E-02	5.01E+01	1.39E-02	4.07E+01	1.13E-02	3.94E+01	1.10E-02	4.38E+01	1.22E-02	4.77E+01	1.32E-02	5.17E+01	1.44E-02	4.10E+01	1.14E-02	3.09E+01	8.58E-03	1.90E+01	5.29E-03	2.11E+01	5.86E-03	1.58E+01	4.38E-03	1.32E+01	3.67E-03

Appendix 4.2 Details of Portal Emissions (Construction Phase)

Agreement No. CE 10/2014 (CE)
 Development of Anderson Road Quarry Site- Investigation, Design and Construction
 EIA Report on Road Improvement Works

Portal Emissions Inventory for Road Improvement Works in Lin Tak Road/Sau Mau Ping Road

RSP Emission Inventory for Portal Emissions at Year 2018

Source ID	Source Description	Type	X (m)	Y (m)	Base Elevation (m)	Release Height (m)	Lateral Dim. (Sy) (m)	Vertical Dim. (Sz) (m)	Emission Rate (g/s)																							
									Hour01	Hour02	Hour03	Hour04	Hour05	Hour06	Hour07	Hour08	Hour09	Hour10	Hour11	Hour12	Hour13	Hour14	Hour15	Hour16	Hour17	Hour18	Hour19	Hour20	Hour21	Hour22	Hour23	Hour24
TTW01	Tseung Kwan O Tunnel (WB) Tunnel Portal at Kwun Tong Side	Volume	843056.2	819795.5	81.1	3.8	3.26	3.53	2.22E-04	1.55E-04	1.18E-04	8.59E-05	7.81E-05	2.49E-04	5.48E-04	1.46E-03	1.68E-03	1.35E-03	1.11E-03	1.15E-03	1.26E-03	1.03E-03	9.94E-04	1.10E-03	1.20E-03	1.30E-03	1.04E-03	7.80E-04	4.81E-04	5.32E-04	3.98E-04	3.34E-04
TTW02	Tseung Kwan O Tunnel (WB) Tunnel Portal at Kwun Tong Side	Volume	843050.6	819791.4	81.1	3.8	3.26	3.53	2.22E-04	1.55E-04	1.18E-04	8.59E-05	7.81E-05	2.49E-04	5.48E-04	1.46E-03	1.68E-03	1.35E-03	1.11E-03	1.15E-03	1.26E-03	1.03E-03	9.94E-04	1.10E-03	1.20E-03	1.30E-03	1.04E-03	7.80E-04	4.81E-04	5.32E-04	3.98E-04	3.34E-04
TTW03	Tseung Kwan O Tunnel (WB) Tunnel Portal at Kwun Tong Side	Volume	843044.9	819787.2	81.1	3.8	3.26	3.53	2.22E-04	1.55E-04	1.18E-04	8.59E-05	7.81E-05	2.49E-04	5.48E-04	1.46E-03	1.68E-03	1.35E-03	1.11E-03	1.15E-03	1.26E-03	1.03E-03	9.94E-04	1.10E-03	1.20E-03	1.30E-03	1.04E-03	7.80E-04	4.81E-04	5.32E-04	3.98E-04	3.34E-04
TTW04	Tseung Kwan O Tunnel (WB) Tunnel Portal at Kwun Tong Side	Volume	843039.2	819783.1	81.1	3.8	3.26	3.53	2.22E-04	1.55E-04	1.18E-04	8.59E-05	7.81E-05	2.49E-04	5.48E-04	1.46E-03	1.68E-03	1.35E-03	1.11E-03	1.15E-03	1.26E-03	1.03E-03	9.94E-04	1.10E-03	1.20E-03	1.30E-03	1.04E-03	7.80E-04	4.81E-04	5.32E-04	3.98E-04	3.34E-04
TTW05	Tseung Kwan O Tunnel (WB) Tunnel Portal at Kwun Tong Side	Volume	843033.6	819779.0	81.1	3.8	3.26	3.53	2.22E-04	1.55E-04	1.18E-04	8.59E-05	7.81E-05	2.49E-04	5.48E-04	1.46E-03	1.68E-03	1.35E-03	1.11E-03	1.15E-03	1.26E-03	1.03E-03	9.94E-04	1.10E-03	1.20E-03	1.30E-03	1.04E-03	7.80E-04	4.81E-04	5.32E-04	3.98E-04	3.34E-04
TTW06	Tseung Kwan O Tunnel (WB) Tunnel Portal at Kwun Tong Side	Volume	843027.9	819774.9	81.1	3.8	3.26	3.53	2.22E-04	1.55E-04	1.18E-04	8.59E-05	7.81E-05	2.49E-04	5.48E-04	1.46E-03	1.68E-03	1.35E-03	1.11E-03	1.15E-03	1.26E-03	1.03E-03	9.94E-04	1.10E-03	1.20E-03	1.30E-03	1.04E-03	7.80E-04	4.81E-04	5.32E-04	3.98E-04	3.34E-04
TTW07	Tseung Kwan O Tunnel (WB) Tunnel Portal at Kwun Tong Side	Volume	843022.2	819770.8	81.1	3.8	3.26	3.53	2.22E-04	1.55E-04	1.18E-04	8.59E-05	7.81E-05	2.49E-04	5.48E-04	1.46E-03	1.68E-03	1.35E-03	1.11E-03	1.15E-03	1.26E-03	1.03E-03	9.94E-04	1.10E-03	1.20E-03	1.30E-03	1.04E-03	7.80E-04	4.81E-04	5.32E-04	3.98E-04	3.34E-04
TTW08	Tseung Kwan O Tunnel (WB) Tunnel Portal at Kwun Tong Side	Volume	843016.6	819766.7	81.1	3.8	3.26	3.53	2.22E-04	1.55E-04	1.18E-04	8.59E-05	7.81E-05	2.49E-04	5.48E-04	1.46E-03	1.68E-03	1.35E-03	1.11E-03	1.15E-03	1.26E-03	1.03E-03	9.94E-04	1.10E-03	1.20E-03	1.30E-03	1.04E-03	7.80E-04	4.81E-04	5.32E-04	3.98E-04	3.34E-04
TTW09	Tseung Kwan O Tunnel (WB) Tunnel Portal at Kwun Tong Side	Volume	843010.9	819762.6	81.1	3.8	3.26	3.53	1.11E-04	7.76E-05	5.88E-05	4.30E-05	3.90E-05	1.24E-04	2.74E-04	7.32E-04	8.39E-04	6.76E-04	5.56E-04	5.75E-04	6.31E-04	5.13E-04	4.97E-04	5.52E-04	6.00E-04	6.52E-04	5.18E-04	3.90E-04	2.40E-04	2.66E-04	1.99E-04	1.67E-04
TTW10	Tseung Kwan O Tunnel (WB) Tunnel Portal at Kwun Tong Side	Volume	843005.2	819758.4	81.1	3.8	3.26	3.53	1.11E-04	7.76E-05	5.88E-05	4.30E-05	3.90E-05	1.24E-04	2.74E-04	7.32E-04	8.39E-04	6.76E-04	5.56E-04	5.75E-04	6.31E-04	5.13E-04	4.97E-04	5.52E-04	6.00E-04	6.52E-04	5.18E-04	3.90E-04	2.40E-04	2.66E-04	1.99E-04	1.67E-04
TTW11	Tseung Kwan O Tunnel (WB) Tunnel Portal at Kwun Tong Side	Volume	842999.6	819754.3	81.1	3.8	3.26	3.53	1.11E-04	7.76E-05	5.88E-05	4.30E-05	3.90E-05	1.24E-04	2.74E-04	7.32E-04	8.39E-04	6.76E-04	5.56E-04	5.75E-04	6.31E-04	5.13E-04	4.97E-04	5.52E-04	6.00E-04	6.52E-04	5.18E-04	3.90E-04	2.40E-04	2.66E-04	1.99E-04	1.67E-04
TTW12	Tseung Kwan O Tunnel (WB) Tunnel Portal at Kwun Tong Side	Volume	842993.9	819750.2	81.1	3.8	3.26	3.53	1.11E-04	7.76E-05	5.88E-05	4.30E-05	3.90E-05	1.24E-04	2.74E-04	7.32E-04	8.39E-04	6.76E-04	5.56E-04	5.75E-04	6.31E-04	5.13E-04	4.97E-04	5.52E-04	6.00E-04	6.52E-04	5.18E-04	3.90E-04	2.40E-04	2.66E-04	1.99E-04	1.67E-04
TTW13	Tseung Kwan O Tunnel (WB) Tunnel Portal at Kwun Tong Side	Volume	842988.3	819746.1	81.1	3.8	3.26	3.53	1.11E-04	7.76E-05	5.88E-05	4.30E-05	3.90E-05	1.24E-04	2.74E-04	7.32E-04	8.39E-04	6.76E-04	5.56E-04	5.75E-04	6.31E-04	5.13E-04	4.97E-04	5.52E-04	6.00E-04	6.52E-04	5.18E-04	3.90E-04	2.40E-04	2.66E-04	1.99E-04	1.67E-04
TTW14	Tseung Kwan O Tunnel (WB) Tunnel Portal at Kwun Tong Side	Volume	842982.6	819742.0	81.1	3.8	3.26	3.53	1.11E-04	7.76E-05	5.88E-05	4.30E-05	3.90E-05	1.24E-04	2.74E-04	7.32E-04	8.39E-04	6.76E-04	5.56E-04	5.75E-04	6.31E-04	5.13E-04	4.97E-04	5.52E-04	6.00E-04	6.52E-04	5.18E-04	3.90E-04	2.40E-04	2.66E-04	1.99E-04	1.67E-04
TTW15	Tseung Kwan O Tunnel (WB) Tunnel Portal at Kwun Tong Side	Volume	842976.9	819737.9	81.1	3.8	3.26	3.53	1.11E-04	7.76E-05	5.88E-05	4.30E-05	3.90E-05	1.24E-04	2.74E-04	7.32E-04	8.39E-04	6.76E-04	5.56E-04	5.75E-04	6.31E-04	5.13E-04	4.97E-04	5.52E-04	6.00E-04	6.52E-04	5.18E-04	3.90E-04	2.40E-04	2.66E-04	1.99E-04	1.67E-04
TTW16	Tseung Kwan O Tunnel (WB) Tunnel Portal at Kwun Tong Side	Volume	842971.3	819733.8	81.1	3.8	3.26	3.53	1.11E-04	7.76E-05	5.88E-05	4.30E-05	3.90E-05	1.24E-04	2.74E-04	7.32E-04	8.39E-04	6.76E-04	5.56E-04	5.75E-04	6.31E-04	5.13E-04	4.97E-04	5.52E-04	6.00E-04	6.52E-04	5.18E-04	3.90E-04	2.40E-04	2.66E-04	1.99E-04	1.67E-04

Appendix 4.2 Details of Portal Emissions (Construction Phase)

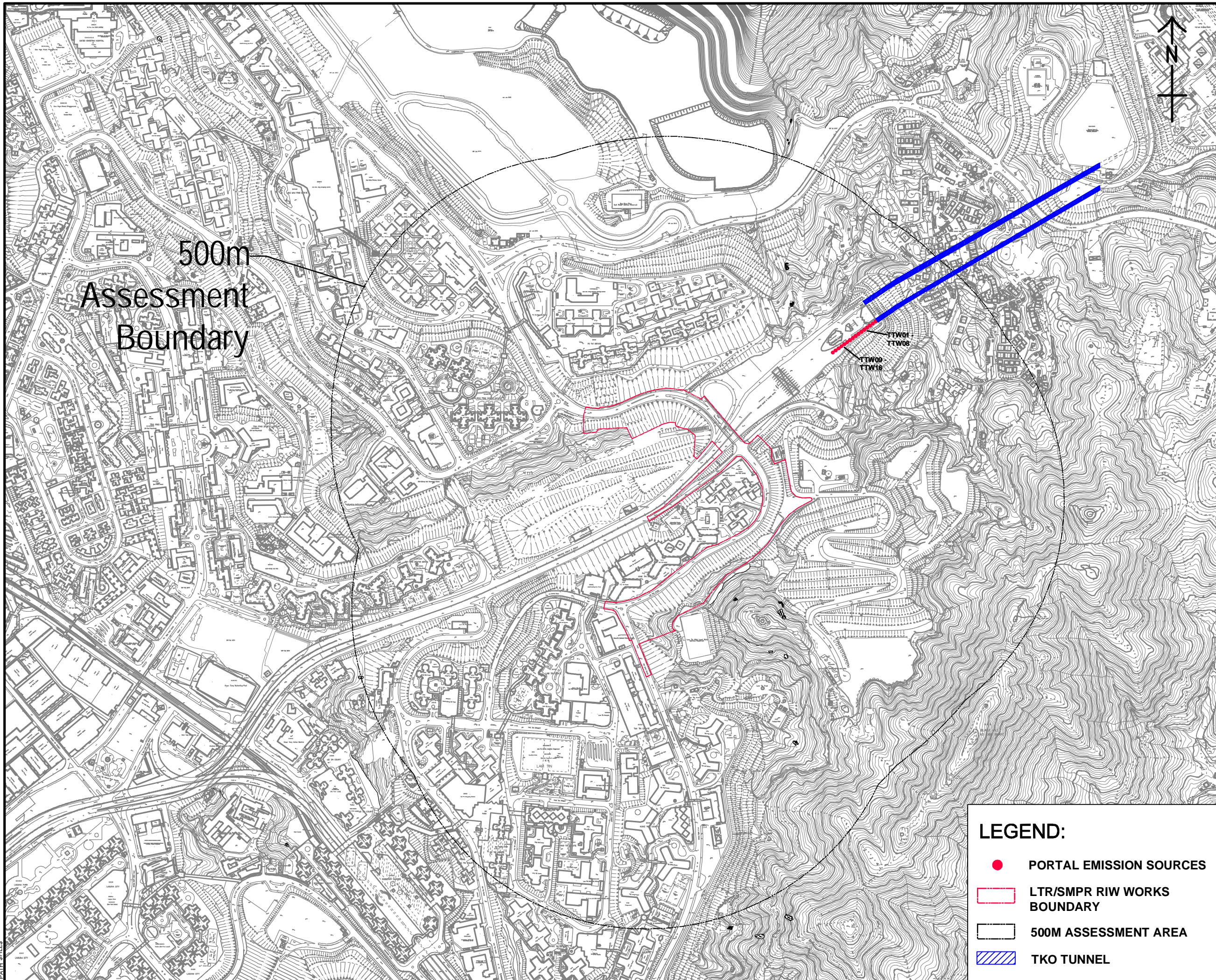
Agreement No. CE 10/2014 (CE)
 Development of Anderson Road Quarry Site- Investigation, Design and Construction
 EIA Report on Road Improvement Works

Portal Emissions Inventory for Road Improvement Works in Lin Tak Road/Sau Mau Ping Road

FSP Emission Inventory for Portal Emissions at Year 2018

Source ID	Source Description	Type	X (m)	Y (m)	Base Elevation (m)	Release Height (m)	Lateral Dim. (Sy) (m)	Vertical Dim. (Sz) (m)	Emission Rate (g/s)																							
									Hour01	Hour02	Hour03	Hour04	Hour05	Hour06	Hour07	Hour08	Hour09	Hour10	Hour11	Hour12	Hour13	Hour14	Hour15	Hour16	Hour17	Hour18	Hour19	Hour20	Hour21	Hour22	Hour23	Hour24
TTW01	Tseung Kwan O Tunnel (WB) Tunnel Portal at Kwun Tong Side	Volume	843056.2	819795.5	81.1	3.8	3.26	3.53	2.03E-04	1.42E-04	1.08E-04	7.87E-05	7.14E-05	2.28E-04	5.03E-04	1.34E-03	1.54E-03	1.24E-03	1.02E-03	1.06E-03	1.16E-03	9.43E-04	9.13E-04	1.01E-03	1.10E-03	1.20E-03	9.50E-04	7.15E-04	4.41E-04	4.88E-04	3.65E-04	3.06E-04
TTW02	Tseung Kwan O Tunnel (WB) Tunnel Portal at Kwun Tong Side	Volume	843050.6	819791.4	81.1	3.8	3.26	3.53	2.03E-04	1.42E-04	1.08E-04	7.87E-05	7.14E-05	2.28E-04	5.03E-04	1.34E-03	1.54E-03	1.24E-03	1.02E-03	1.06E-03	1.16E-03	9.43E-04	9.13E-04	1.01E-03	1.10E-03	1.20E-03	9.50E-04	7.15E-04	4.41E-04	4.88E-04	3.65E-04	3.06E-04
TTW03	Tseung Kwan O Tunnel (WB) Tunnel Portal at Kwun Tong Side	Volume	843044.9	819787.2	81.1	3.8	3.26	3.53	2.03E-04	1.42E-04	1.08E-04	7.87E-05	7.14E-05	2.28E-04	5.03E-04	1.34E-03	1.54E-03	1.24E-03	1.02E-03	1.06E-03	1.16E-03	9.43E-04	9.13E-04	1.01E-03	1.10E-03	1.20E-03	9.50E-04	7.15E-04	4.41E-04	4.88E-04	3.65E-04	3.06E-04
TTW04	Tseung Kwan O Tunnel (WB) Tunnel Portal at Kwun Tong Side	Volume	843039.2	819783.1	81.1	3.8	3.26	3.53	2.03E-04	1.42E-04	1.08E-04	7.87E-05	7.14E-05	2.28E-04	5.03E-04	1.34E-03	1.54E-03	1.24E-03	1.02E-03	1.06E-03	1.16E-03	9.43E-04	9.13E-04	1.01E-03	1.10E-03	1.20E-03	9.50E-04	7.15E-04	4.41E-04	4.88E-04	3.65E-04	3.06E-04
TTW05	Tseung Kwan O Tunnel (WB) Tunnel Portal at Kwun Tong Side	Volume	843033.6	819779.0	81.1	3.8	3.26	3.53	2.03E-04	1.42E-04	1.08E-04	7.87E-05	7.14E-05	2.28E-04	5.03E-04	1.34E-03	1.54E-03	1.24E-03	1.02E-03	1.06E-03	1.16E-03	9.43E-04	9.13E-04	1.01E-03	1.10E-03	1.20E-03	9.50E-04	7.15E-04	4.41E-04	4.88E-04	3.65E-04	3.06E-04
TTW06	Tseung Kwan O Tunnel (WB) Tunnel Portal at Kwun Tong Side	Volume	843027.9	819774.9	81.1	3.8	3.26	3.53	2.03E-04	1.42E-04	1.08E-04	7.87E-05	7.14E-05	2.28E-04	5.03E-04	1.34E-03	1.54E-03	1.24E-03	1.02E-03	1.06E-03	1.16E-03	9.43E-04	9.13E-04	1.01E-03	1.10E-03	1.20E-03	9.50E-04	7.15E-04	4.41E-04	4.88E-04	3.65E-04	3.06E-04
TTW07	Tseung Kwan O Tunnel (WB) Tunnel Portal at Kwun Tong Side	Volume	843022.2	819770.8	81.1	3.8	3.26	3.53	2.03E-04	1.42E-04	1.08E-04	7.87E-05	7.14E-05	2.28E-04	5.03E-04	1.34E-03	1.54E-03	1.24E-03	1.02E-03	1.06E-03	1.16E-03	9.43E-04	9.13E-04	1.01E-03	1.10E-03	1.20E-03	9.50E-04	7.15E-04	4.41E-04	4.88E-04	3.65E-04	3.06E-04
TTW08	Tseung Kwan O Tunnel (WB) Tunnel Portal at Kwun Tong Side	Volume	843016.6	819766.7	81.1	3.8	3.26	3.53	2.03E-04	1.42E-04	1.08E-04	7.87E-05	7.14E-05	2.28E-04	5.03E-04	1.34E-03	1.54E-03	1.24E-03	1.02E-03	1.06E-03	1.16E-03	9.43E-04	9.13E-04	1.01E-03	1.10E-03	1.20E-03	9.50E-04	7.15E-04	4.41E-04	4.88E-04	3.65E-04	3.06E-04
TTW09	Tseung Kwan O Tunnel (WB) Tunnel Portal at Kwun Tong Side	Volume	843010.9	819762.6	81.1	3.8	3.26	3.53	1.02E-04	7.10E-05	5.39E-05	3.94E-05	3.57E-05	1.14E-04	2.52E-04	6.72E-04	7.70E-04	6.20E-04	5.10E-04	5.28E-04	5.80E-04	4.72E-04	4.57E-04	5.07E-04	5.52E-04	5.99E-04	4.75E-04	3.58E-04	2.20E-04	2.44E-04	1.82E-04	1.53E-04
TTW10	Tseung Kwan O Tunnel (WB) Tunnel Portal at Kwun Tong Side	Volume	843005.2	819758.4	81.1	3.8	3.26	3.53	1.02E-04	7.10E-05	5.39E-05	3.94E-05	3.57E-05	1.14E-04	2.52E-04	6.72E-04	7.70E-04	6.20E-04	5.10E-04	5.28E-04	5.80E-04	4.72E-04	4.57E-04	5.07E-04	5.52E-04	5.99E-04	4.75E-04	3.58E-04	2.20E-04	2.44E-04	1.82E-04	1.53E-04
TTW11	Tseung Kwan O Tunnel (WB) Tunnel Portal at Kwun Tong Side	Volume	842999.6	819754.3	81.1	3.8	3.26	3.53	1.02E-04	7.10E-05	5.39E-05	3.94E-05	3.57E-05	1.14E-04	2.52E-04	6.72E-04	7.70E-04	6.20E-04	5.10E-04	5.28E-04	5.80E-04	4.72E-04	4.57E-04	5.07E-04	5.52E-04	5.99E-04	4.75E-04	3.58E-04	2.20E-04	2.44E-04	1.82E-04	1.53E-04
TTW12	Tseung Kwan O Tunnel (WB) Tunnel Portal at Kwun Tong Side	Volume	842993.9	819750.2	81.1	3.8	3.26	3.53	1.02E-04	7.10E-05	5.39E-05	3.94E-05	3.57E-05	1.14E-04	2.52E-04	6.72E-04	7.70E-04	6.20E-04	5.10E-04	5.28E-04	5.80E-04	4.72E-04	4.57E-04	5.07E-04	5.52E-04	5.99E-04	4.75E-04	3.58E-04	2.20E-04	2.44E-04	1.82E-04	1.53E-04
TTW13	Tseung Kwan O Tunnel (WB) Tunnel Portal at Kwun Tong Side	Volume	842988.3	819746.1	81.1	3.8	3.26	3.53	1.02E-04	7.10E-05	5.39E-05	3.94E-05	3.57E-05	1.14E-04	2.52E-04	6.72E-04	7.70E-04	6.20E-04	5.10E-04	5.28E-04	5.80E-04	4.72E-04	4.57E-04	5.07E-04	5.52E-04	5.99E-04	4.75E-04	3.58E-04	2.20E-04	2.44E-04	1.82E-04	1.53E-04
TTW14	Tseung Kwan O Tunnel (WB) Tunnel Portal at Kwun Tong Side	Volume	842982.6	819742.0	81.1	3.8	3.26	3.53	1.02E-04	7.10E-05	5.39E-05	3.94E-05	3.57E-05	1.14E-04	2.52E-04	6.72E-04	7.70E-04	6.20E-04	5.10E-04	5.28E-04	5.80E-04	4.72E-04	4.57E-04	5.07E-04	5.52E-04	5.99E-04	4.75E-04	3.58E-04	2.20E-04	2.44E-04	1.82E-04	1.53E-04
TTW15	Tseung Kwan O Tunnel (WB) Tunnel Portal at Kwun Tong Side	Volume	842976.9	819737.9	81.1	3.8	3.26	3.53	1.02E-04	7.10E-05	5.39E-05	3.94E-05	3.57E-05	1.14E-04	2.52E-04	6.72E-04	7.70E-04	6.20E-04	5.10E-04	5.28E-04	5.80E-04	4.72E-04	4.57E-04	5.07E-04	5.52E-04	5.99E-04	4.75E-04	3.58E-04	2.20E-04	2.44E-04	1.82E-04	1.53E-04
TTW16	Tseung Kwan O Tunnel (WB) Tunnel Portal at Kwun Tong Side	Volume	842971.3	819733.8	81.1	3.8	3.26	3.53	1.02E-04	7.10E-05	5.39E-05	3.94E-05	3.57E-05	1.14E-04	2.52E-04	6.72E-04	7.70E-04	6.20E-04	5.10E-04	5.28E-04	5.80E-04	4.72E-04	4.57E-04	5.07E-04	5.52E-04	5.99E-04	4.75E-04	3.58E-04	2.20E-04	2.44E-04	1.82E-04	1.53E-04

Project Management Initials: Designer: Checked: Approved:



PROJECT
 項目
DEVELOPMENT OF ANDERSON ROAD QUARRY SITE - INVESTIGATION, DESIGN AND CONSTRUCTION

CLIENT
 業主
 土木工程拓展署
 Civil Engineering and Development Department

CONSULTANT
 工程顧問公司
 AECOM Asia Company Ltd.
 www.aecom.com

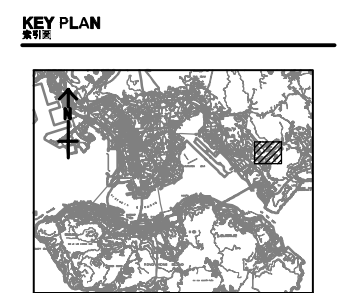
SUB-CONSULTANTS
 分包工程顧問公司

ISSUE/REVISION
發行

NO.	DATE	DESCRIPTION	CHK.
號	日期	內容描述	審核

STATUS
階段

SCALE **DIMENSION UNIT**
 比例 尺寸單位
 A3 1:7000 METRES



PROJECT NO. **CONTRACT NO.**
 項目編號 合約編號
 60328348 CE 10/2014 (CE)

SHEET TITLE
 圖紙名稱
 Location of Portal Emission Sources (LTR/SMPR RIW) (CONSTRUCTION PHASE)

SHEET NUMBER
 圖紙編號
 Appendix 4.2

- LEGEND:**
- PORTAL EMISSION SOURCES
 - LTR/SMPR RIW WORKS BOUNDARY
 - 500M ASSESSMENT AREA
 - TKO TUNNEL

This drawing has been prepared for the use of AECOM and its clients. It is not to be used for any other purpose without the written consent of AECOM. AECOM does not accept any liability for any loss or damage, whether direct or indirect, arising from the use of this drawing.