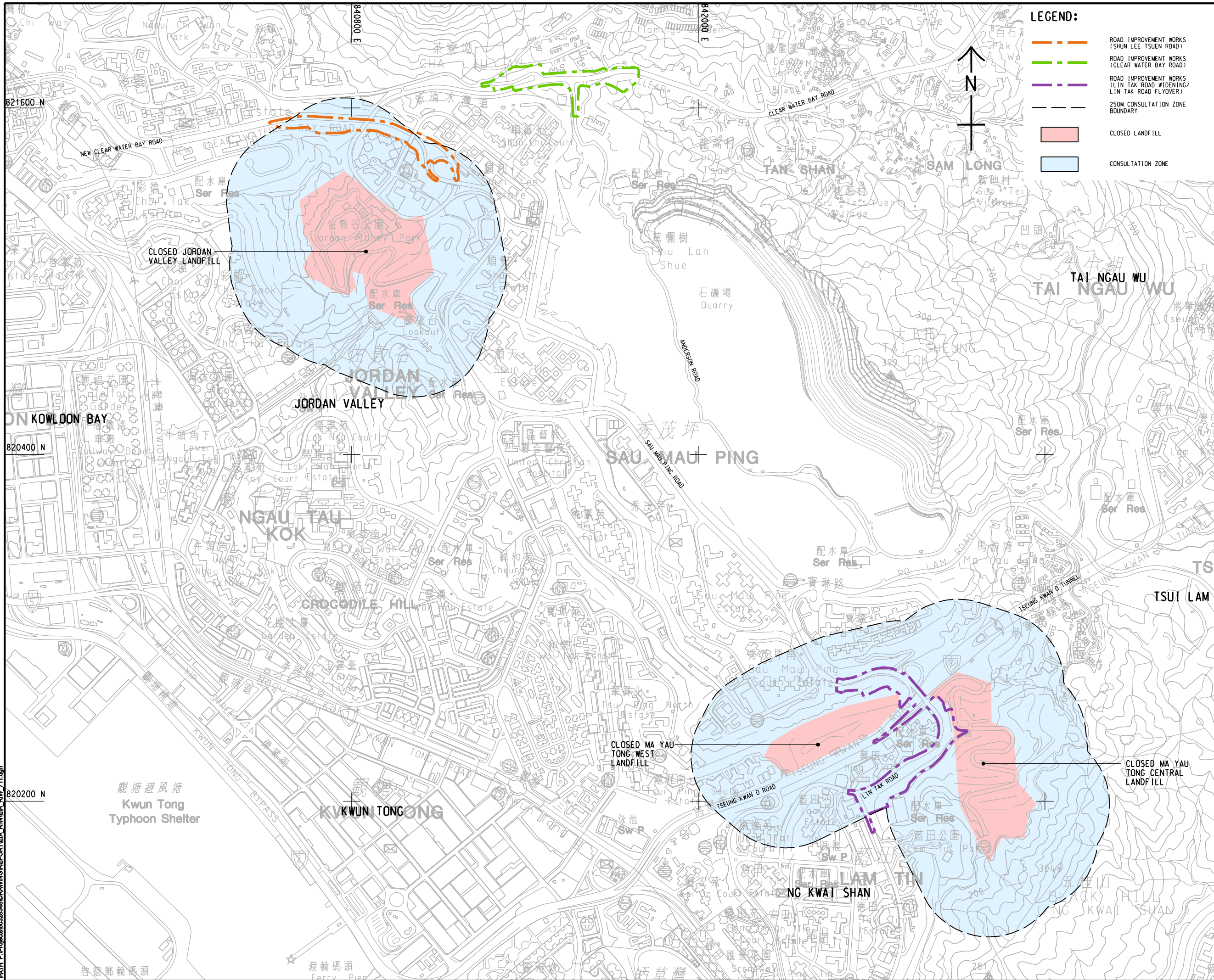


ISO A1 594mm x 841mm
 Approved:
 Checked:
 Designer:
 Project Management Initials:
 Pld File by: ZHLZ 2015/01/19
 PATH P:\Projects\60328348\DRAWING\REPORT\EIA_RIW\EIA_RIW_711.dgn



LEGEND:

- - - ROAD IMPROVEMENT WORKS (SHUN LEE TSUEN ROAD)
- - - ROAD IMPROVEMENT WORKS (CLEAR WATER BAY ROAD)
- - - ROAD IMPROVEMENT WORKS (LIN TAK ROAD WIDENING/LIN TAK ROAD FLYOVER)
- 250M CONSULTATION ZONE BOUNDARY
- CLOSED LANDFILL
- CONSULTATION ZONE



AECOM

PROJECT
 DEVELOPMENT OF
 ANDERSON ROAD
 QUARRY SITE -
 INVESTIGATION, DESIGN
 AND CONSTRUCTION

CLIENT
 土木工程拓展署
CEDD
 Civil Engineering and
 Development Department

CONSULTANT
 AECOM Asia Company Ltd.
 www.aecom.com

SUB-CONSULTANTS
 丹桂工程顧問公司

ISSUE/REVISION

NO.	DATE	DESCRIPTION	CHK.

STATUS
 現狀

SCALE
 1:8000

DIMENSION UNIT
 METRES

KEY PLAN
 索引圖

PROJECT NO.
 60328348

CONTRACT NO.
 CE 10/2014 (CE)

SHEET TITLE
 LOCATIONS OF PREVIOUS
 LANDFILLS AND PROPOSED
 SITE BOUNDARY

SHEET NUMBER
 60328348/EIA_RIW/FIGURE 11.1

This drawing has been prepared for the use of AECOM's client. It may not be used, modified, reproduced or relied upon by third parties, except as agreed by AECOM or as required by law. AECOM accepts no responsibility, and denies any liability whatsoever, for any party that uses or relies on this drawing without AECOM's express written consent. Do not scale this document. All measurements must be obtained from the related dimensions.