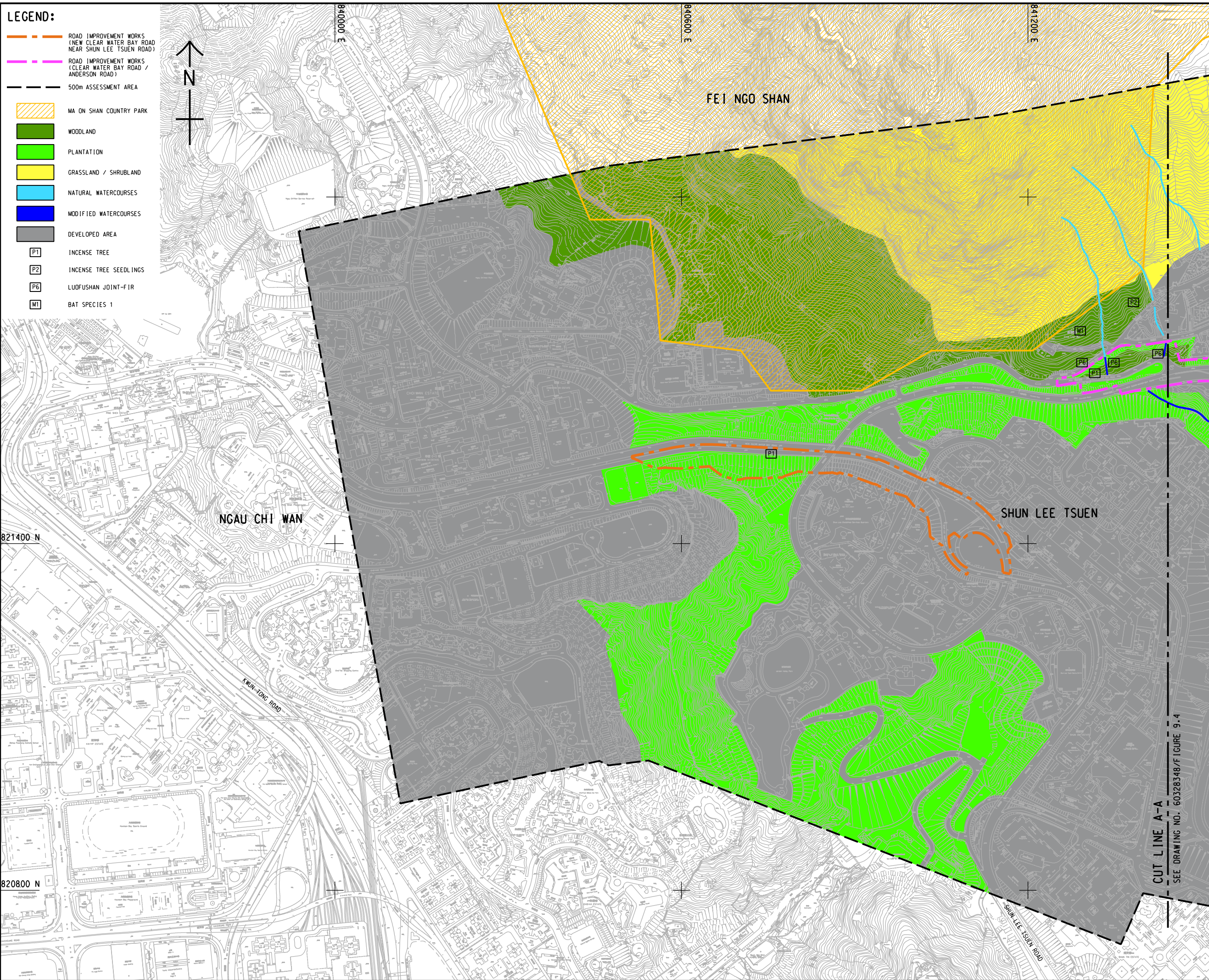


ISO A1 594mm x 841mm
Approved:
Checked:
Designer:
Project Management Initials:

- LEGEND:**
- ROAD IMPROVEMENT WORKS (NEW CLEAR WATER BAY ROAD NEAR SHUN LEE TSUEN ROAD)
 - ROAD IMPROVEMENT WORKS (CLEAR WATER BAY ROAD / ANDERSON ROAD)
 - 500m ASSESSMENT AREA
 - MA ON SHAN COUNTRY PARK
 - WOODLAND
 - PLANTATION
 - GRASSLAND / SHRUBLAND
 - NATURAL WATERCOURSES
 - MODIFIED WATERCOURSES
 - DEVELOPED AREA
 - P1 INCENSE TREE
 - P2 INCENSE TREE SEEDLINGS
 - P6 LUOFUSHAN JOINT-FIR
 - M1 BAT SPECIES 1



AECOM

PROJECT
項目
DEVELOPMENT OF ANDERSON ROAD QUARRY SITE - INVESTIGATION, DESIGN AND CONSTRUCTION

CLIENT
業主
CEDD 土木工程拓展署
Civil Engineering and Development Department

CONSULTANT
顧問公司
AECOM Asia Company Ltd.
www.aecom.com

SUB-CONSULTANTS
分判工程師/顧問公司

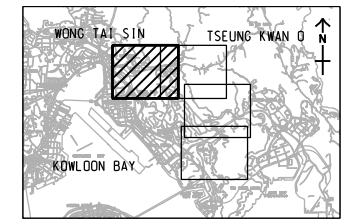
ISSUE/REVISION
修訂

NO.	DATE	DESCRIPTION	CHK.

STATUS
圖則

SCALE 比例
A1 1:3000
DIMENSION UNIT 尺寸單位
METRES

KEY PLAN 索引圖
A1 1:12000



PROJECT NO. 項目編號
60328348
CONTRACT NO. 合約編號
CE 10/2014 (CE)

SHEET TITLE 圖則名稱
HABITAT MAP AND LOCATIONS OF SPECIES OF CONSERVATION IMPORTANCE
SHEET 1 OF 4

SHEET NUMBER 圖則編號
60328348/EIA_RIW/FIGURE 9.3

This drawing has been prepared for the use of AECOM's client. It may not be used, modified, reproduced or relied upon by third parties, except as agreed by AECOM in writing. AECOM accepts no responsibility, and denies any liability whatsoever, for any party that uses or relies on this drawing without AECOM's express written consent. Do not scale this document. All measurements must be obtained from the stated dimensions.

Pld File by: ZHILZ 2015/11/16
PATH: P:\PROJECTS\60328348\Drawing\REPORT\EIA_RIW/EIA_RIW_733.dgn

CUT LINE A-A
SEE DRAWING NO. 60328348/FIGURE 9.4