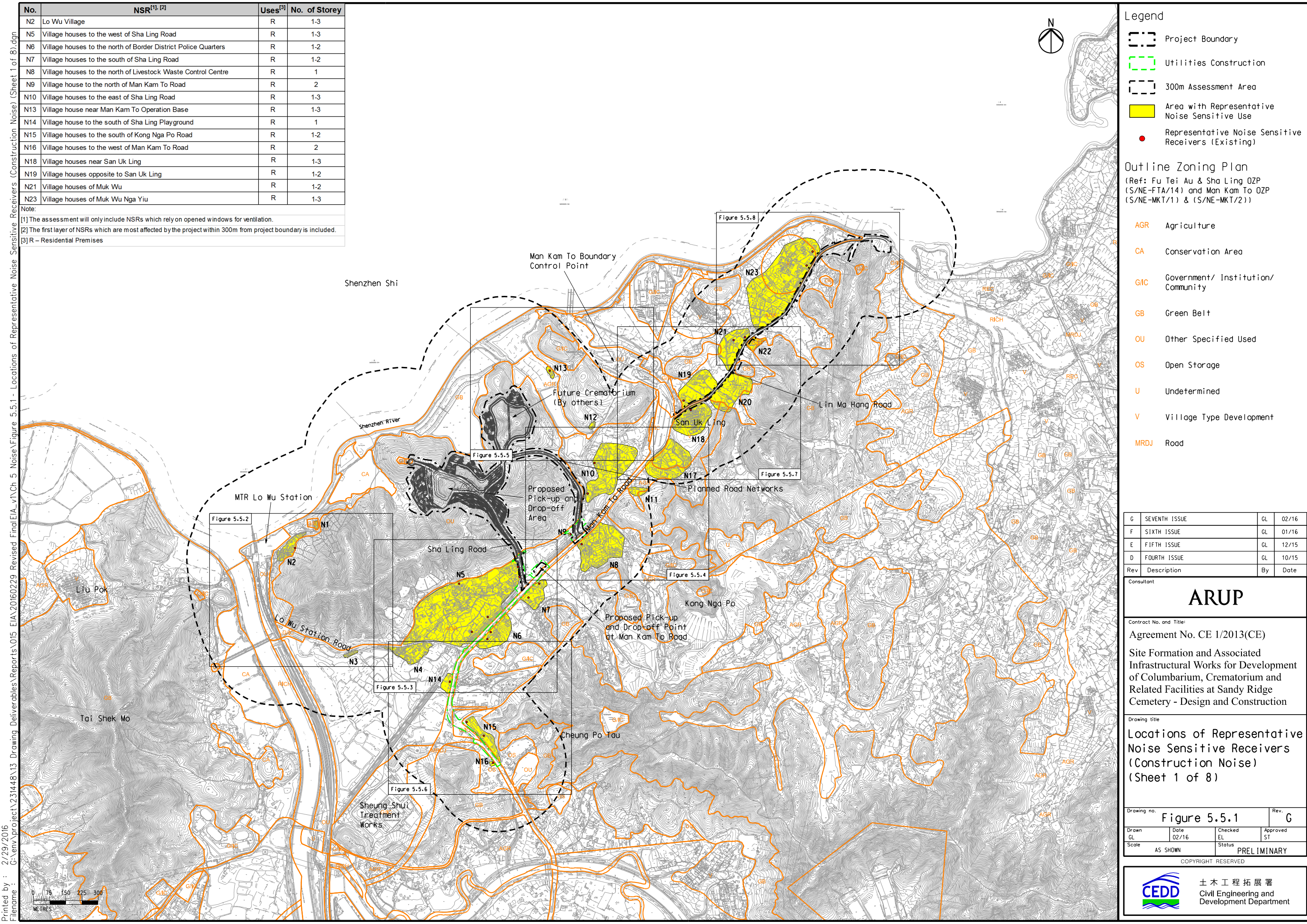


| No. | NSR ^{[1], [2]} | Uses ^[3] | No. of Storey |
|-----|--|---------------------|---------------|
| N2 | Lo Wu Village | R | 1-3 |
| N5 | Village houses to the west of Sha Ling Road | R | 1-3 |
| N6 | Village houses to the north of Border District Police Quarters | R | 1-2 |
| N7 | Village houses to the south of Sha Ling Road | R | 1-2 |
| N8 | Village houses to the north of Livestock Waste Control Centre | R | 1 |
| N9 | Village house to the north of Man Kam To Road | R | 2 |
| N10 | Village houses to the east of Sha Ling Road | R | 1-3 |
| N13 | Village house near Man Kam To Operation Base | R | 1-3 |
| N14 | Village house to the south of Sha Ling Playground | R | 1 |
| N15 | Village houses to the south of Kong Nga Po Road | R | 1-2 |
| N16 | Village houses to the west of Man Kam To Road | R | 2 |
| N18 | Village houses near San Uk Ling | R | 1-3 |
| N19 | Village houses opposite to San Uk Ling | R | 1-2 |
| N21 | Village houses of Muk Wu | R | 1-2 |
| N23 | Village houses of Muk Wu Nga Yiu | R | 1-3 |

Note:
 [1] The assessment will only include NSRs which rely on opened windows for ventilation.
 [2] The first layer of NSRs which are most affected by the project within 300m from project boundary is included.
 [3] R – Residential Premises



Legend

- Project Boundary
- Utilities Construction
- 300m Assessment Area
- Area with Representative Noise Sensitive Use
- Representative Noise Sensitive Receivers (Existing)

Outline Zoning Plan
 (Ref: Fu Tei Au & Sha Ling OZP (S/NE-FTA/14) and Man Kam To OZP (S/NE-MKT/1) & (S/NE-MKT/2))

- AGR Agriculture
- CA Conservation Area
- GIC Government/ Institution/ Community
- GB Green Belt
- OU Other Specified Used
- OS Open Storage
- U Undetermined
- V Village Type Development
- MRDJ Road

| | | | |
|-----|---------------|----|-------|
| G | SEVENTH ISSUE | GL | 02/16 |
| F | SIXTH ISSUE | GL | 01/16 |
| E | FIFTH ISSUE | GL | 12/15 |
| D | FOURTH ISSUE | GL | 10/15 |
| Rev | Description | By | Date |

Consultant
ARUP

Contract No. and Title:
 Agreement No. CE 1/2013(CE)
 Site Formation and Associated Infrastructural Works for Development of Columbarium, Crematorium and Related Facilities at Sandy Ridge Cemetery - Design and Construction

Drawing title
Locations of Representative Noise Sensitive Receivers (Construction Noise) (Sheet 1 of 8)

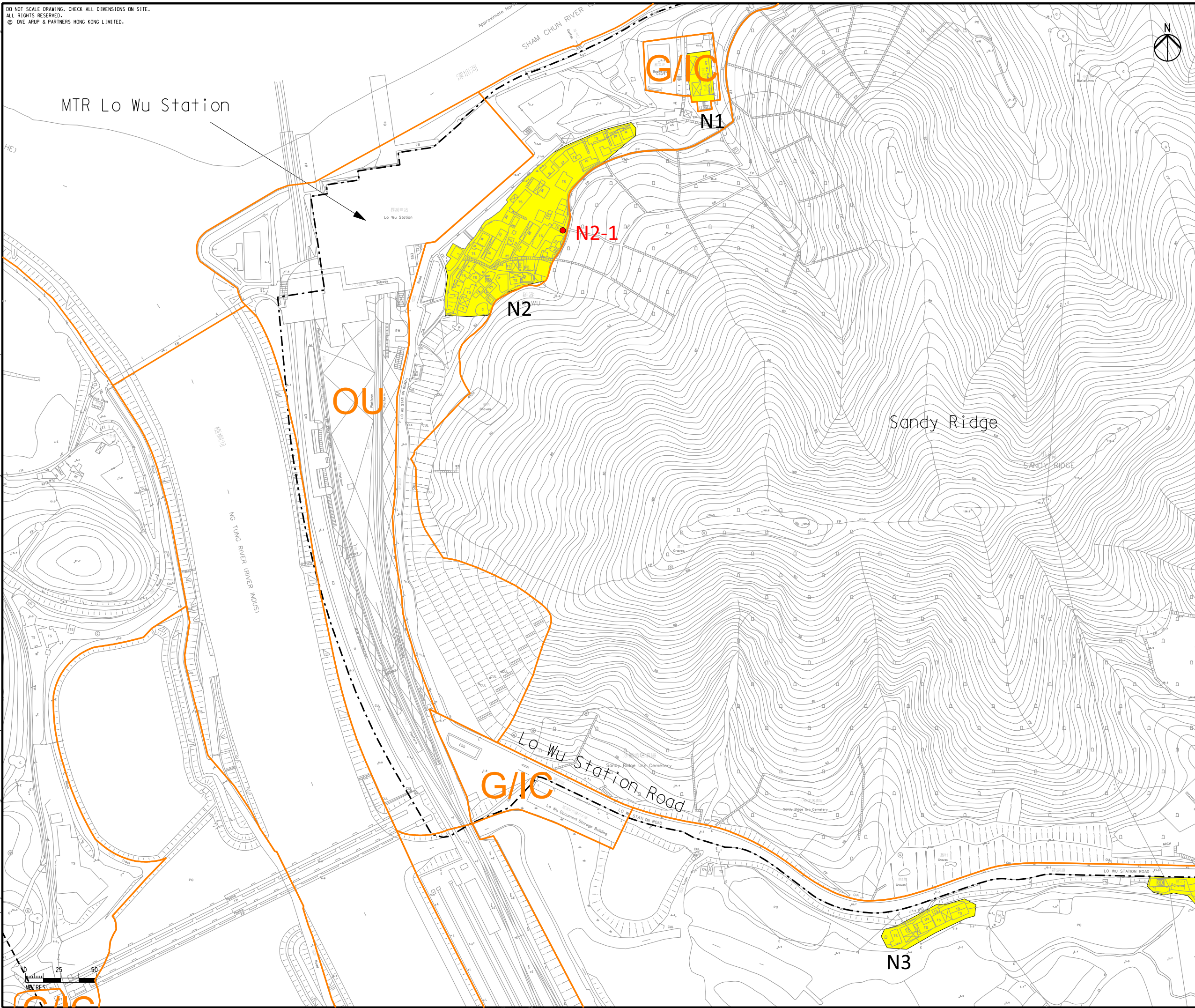
| | | | |
|---------------------------------|-------------|---------------|----------|
| Drawing no. Figure 5.5.1 | | Rev. G | |
| Drawn | Date | Checked | Approved |
| GL | 02/16 | EL | ST |
| Scale | Status | | |
| AS SHOWN | PRELIMINARY | | |

COPYRIGHT RESERVED

土木工程拓展署
 Civil Engineering and Development Department

DO NOT SCALE DRAWING. CHECK ALL DIMENSIONS ON SITE.
 ALL RIGHTS RESERVED.
 © OVE ARUP & PARTNERS HONG KONG LIMITED.

Printed by : 2/29/2016
 Filename : G:\env\project\231448\13 Drawing Deliverables\Reports\015 EIA\20160229 Revised Final\IA_v1\Ch 5 Noise\Figure 5.5.2 - Locations of Representative Noise Sensitive Receivers (Construction Noise) (Sheet 2 of 8).dgn



Legend

- Project Boundary
- 300m Assessment Area
- Area with Representative Noise Sensitive Use
- Representative Noise Sensitive Receivers (Existing)

Outline Zoning Plan

(Ref: Fu Tei Au & Sha Ling OZP (S/NE-FTA/14) and Man Kam To OZP (S/NE-MKT/1) & (S/NE-MKT/2))

- AGR** Agriculture
- CA** Conservation Area
- G/IC** Government/ Institution/ Community
- GB** Green Belt
- OU** Other Specified Used
- OS** Open Storage
- U** Undetermined
- V** Village Type Development
- MRDJ** Road

| | | | |
|-----|--------------|----|-------|
| F | SIXTH ISSUE | GL | 02/16 |
| E | FIFTH ISSUE | GL | 12/15 |
| D | FOURTH ISSUE | GL | 10/15 |
| C | THIRD ISSUE | GL | 02/15 |
| Rev | Description | By | Date |

Consultant
ARUP

Contract No. and Title:
 Agreement No. CE 1/2013(CE)
 Site Formation and Associated Infrastructural Works for Development of Columbarium, Crematorium and Related Facilities at Sandy Ridge Cemetery - Design and Construction

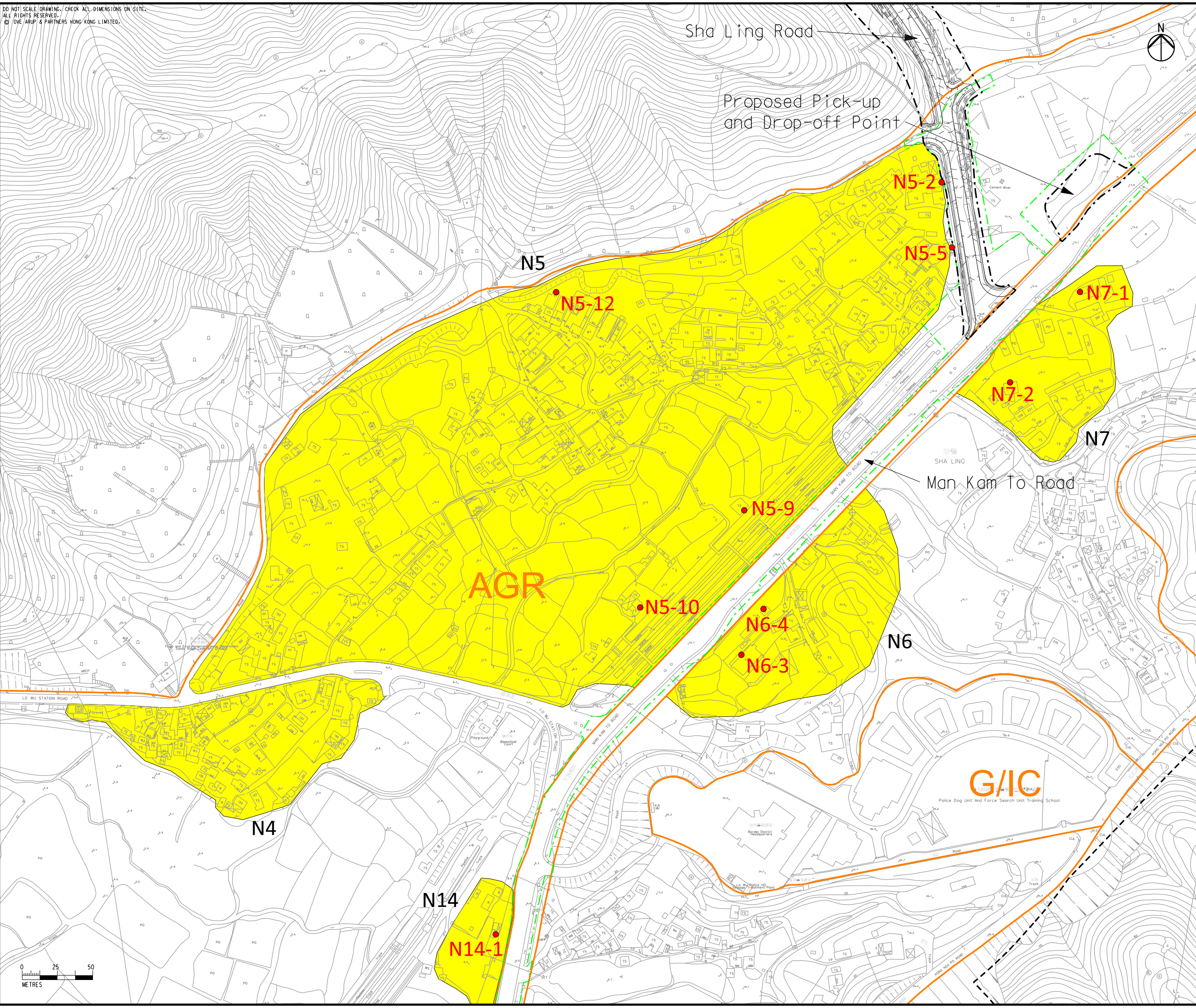
Drawing title
Locations of Representative Noise Sensitive Receivers (Construction Noise) (Sheet 2 of 8)

| | | | |
|---------------------------------|---------------|------------------------------|----------------|
| Drawing no. Figure 5.5.2 | | Rev. F | |
| Drawn GL | Date 02/16 | Checked EL | Approved ST |
| Scale 1:2500 @A3 | | Status PRELIMINARY | |

COPYRIGHT RESERVED



Printed by : 2/29/2016
 File name : G:\env\project\231448\13 Drawing Deliverables\Reports\015 EIA\20160229 Revised Final EIA_v1\Ch 5 Noise\Figure 5.5.3 - Locations of Representative Noise Sensitive Receivers (Construction Noise) (Sheet 3 of 8).dgn



Legend

- Project Boundary
- Utilities Construction
- 300m Assessment Area
- Area with Representative Noise Sensitive Use
- Representative Noise Sensitive Receivers (Existing)

Outline Zoning Plan
 (Ref: Fu Tei Au & Sha Ling OZP (S/NE-FTA/14) and Man Kam To OZP (S/NE-MKT/1) & (S/NE-MKT/2))

- AGR Agriculture
- CA Conservation Area
- G/I/C Government/ Institution/ Community
- GB Green Belt
- OU Other Specified Used
- OS Open Storage
- U Undetermined
- V Village Type Development
- MRDJ Road

| | | | |
|-----|--------------|----|-------|
| F | SIXTH ISSUE | GL | 02/16 |
| E | FIFTH ISSUE | GL | 12/15 |
| D | FOURTH ISSUE | GL | 10/15 |
| C | THIRD ISSUE | GL | 02/15 |
| Rev | Description | By | Date |

Consultant

ARUP

Contract No. and Title:

Agreement No. CE 1/2013(CE)

Site Formation and Associated Infrastructural Works for Development of Columbarium, Crematorium and Related Facilities at Sandy Ridge Cemetery - Design and Construction

Drawing title

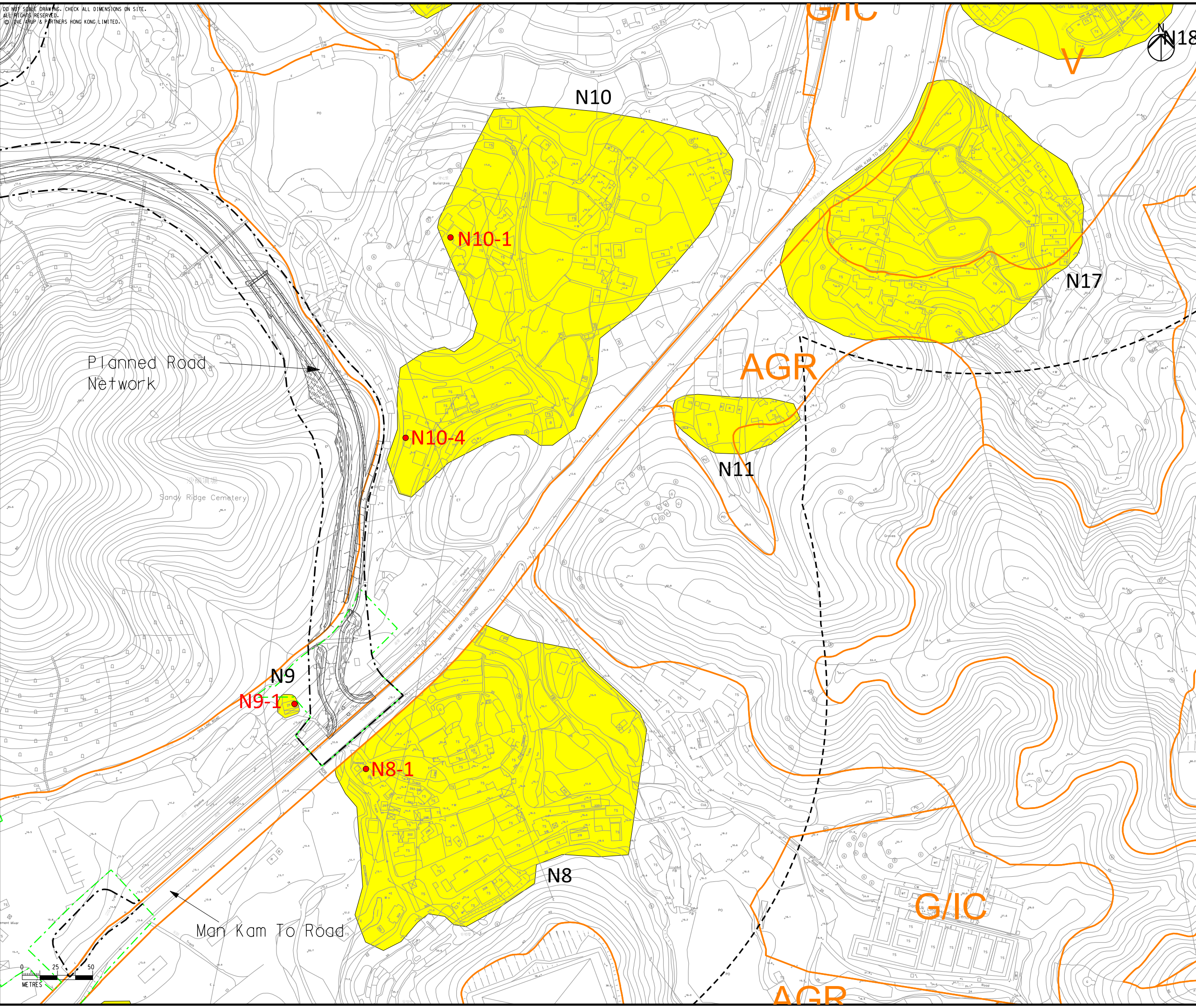
Locations of Representative Noise Sensitive Receivers (Construction Noise) (Sheet 3 of 8)

| | | | |
|---------------------------------|---------------------------|-------------------|--------------------|
| Drawing no. Figure 5.5.3 | Rev. F | | |
| Drawn GL | Date 02/16 | Checked EL | Approved ST |
| Scale 1:2500 @A3 | Status PRELIMINARY | | |

COPYRIGHT RESERVED

土木工程拓展署
 Civil Engineering and Development Department

Printed by : 2/29/2016
 Filename : G:\env\project\2.31448\13 Drawing Deliverables\Reports\015 EIA\20160229 Revised FinalEIA_v1\Ch 5 Noise\Figure 5.5.4 - Locations of Representative Noise Sensitive Receivers (Construction Noise) (Sheet 4 of 8).dgn



Legend

- Project Boundary
- Utilities Construction
- 300m Assessment Area
- Area with Representative Noise Sensitive Use
- Representative Noise Sensitive Receivers (Existing)

Outline Zoning Plan
 (Ref: Fu Tei Au & Sha Ling OZP (S/NE-FTA/14) and Man Kam To OZP (S/NE-MKT/1) & (S/NE-MKT/2))

- AGR Agriculture
- CA Conservation Area
- G/IC Government/ Institution/ Community
- GB Green Belt
- OU Other Specified Used
- OS Open Storage
- U Undetermined
- V Village Type Development
- MRDJ Road

| | | | |
|-----|--------------|----|-------|
| E | FIFTH ISSUE | GL | 02/16 |
| D | FOURTH ISSUE | GL | 12/15 |
| C | THIRD ISSUE | GL | 10/15 |
| B | SECOND ISSUE | GL | 11/14 |
| Rev | Description | By | Date |

Consultant
ARUP

Contract No. and Title:
 Agreement No. CE 1/2013(CE)
 Site Formation and Associated Infrastructural Works for Development of Columbarium, Crematorium and Related Facilities at Sandy Ridge Cemetery - Design and Construction

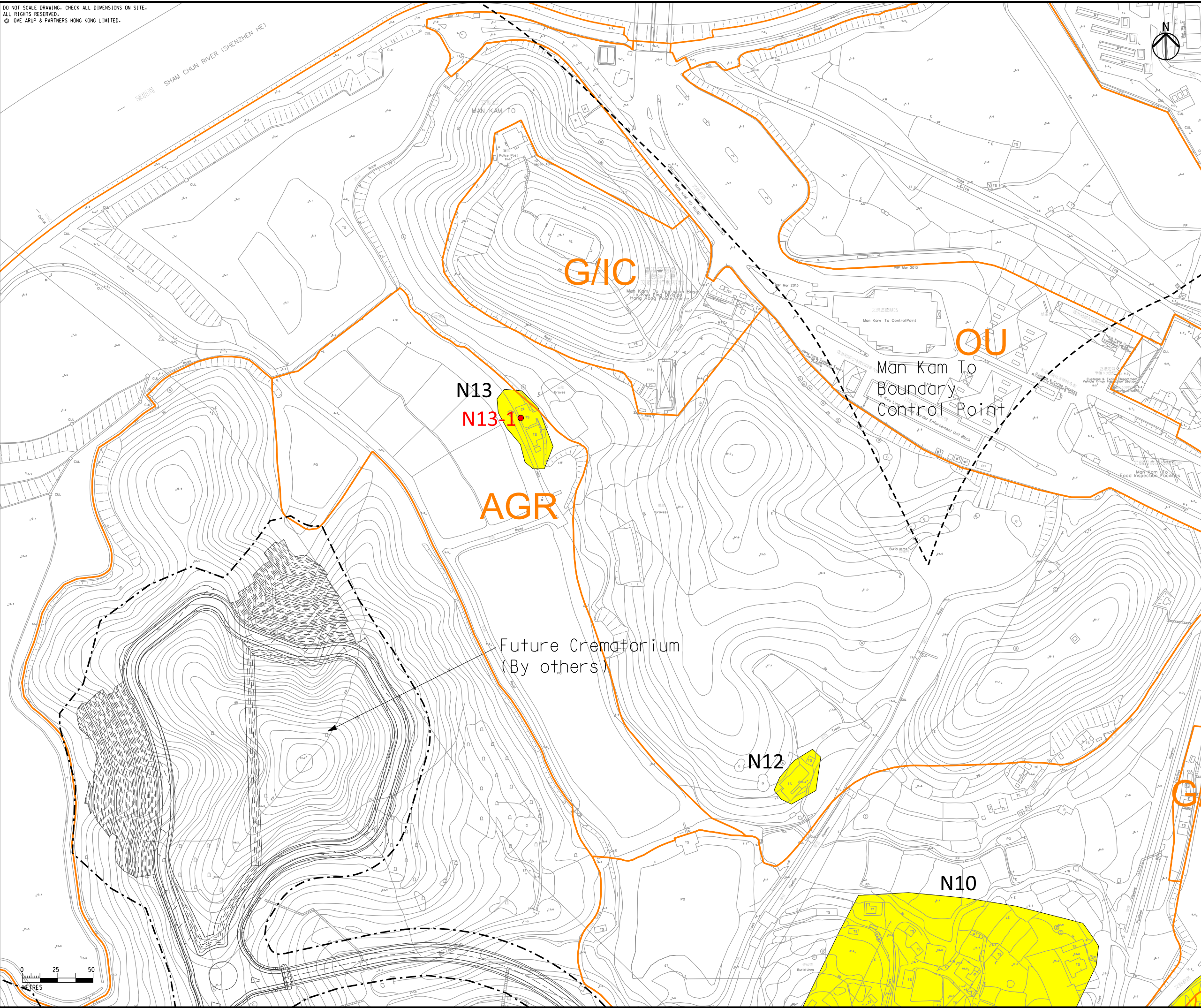
Drawing title
Locations of Representative Noise Sensitive Receivers (Construction Noise) (Sheet 4 of 8)

| | | | |
|-------------|--------------|----------|-------------|
| Drawing no. | Figure 5.5.4 | Rev. | E |
| Drawn | GL | Date | 02/16 |
| Checked | EL | Approved | ST |
| Scale | 1:2500 @A3 | Status | PRELIMINARY |

COPYRIGHT RESERVED

土木工程拓展署
 Civil Engineering and Development Department

DO NOT SCALE DRAWING. CHECK ALL DIMENSIONS ON SITE.
 ALL RIGHTS RESERVED.
 © DVE ARUP & PARTNERS HONG KONG LIMITED.



Legend

- Project Boundary
- 300m Assessment Area
- Area with Representative Noise Sensitive Use
- Representative Noise Sensitive Receivers (Existing)

Outline Zoning Plan
 (Ref: Fu Tei Au & Sha Ling OZP (S/NE-FTA/14) and Man Kam To OZP (S/NE-MKT/1) & (S/NE-MKT/2))

- AGR** Agriculture
- CA** Conservation Area
- G/IC** Government/ Institution/ Community
- GB** Green Belt
- OU** Other Specified Used
- OS** Open Storage
- U** Undetermined
- V** Village Type Development
- MRDJ** Road

| | | | |
|-----|--------------|----|-------|
| F | SIXTH ISSUE | GL | 02/16 |
| E | FIFTH ISSUE | GL | 12/15 |
| D | FOURTH ISSUE | GL | 10/15 |
| C | THIRD ISSUE | GL | 02/15 |
| Rev | Description | By | Date |

Consultant
ARUP

Contract No. and Title:
 Agreement No. CE 1/2013(CE)
 Site Formation and Associated Infrastructural Works for Development of Columbarium, Crematorium and Related Facilities at Sandy Ridge Cemetery - Design and Construction

Drawing title
Locations of Representative Noise Sensitive Receivers (Construction Noise) (Sheet 5 of 8)

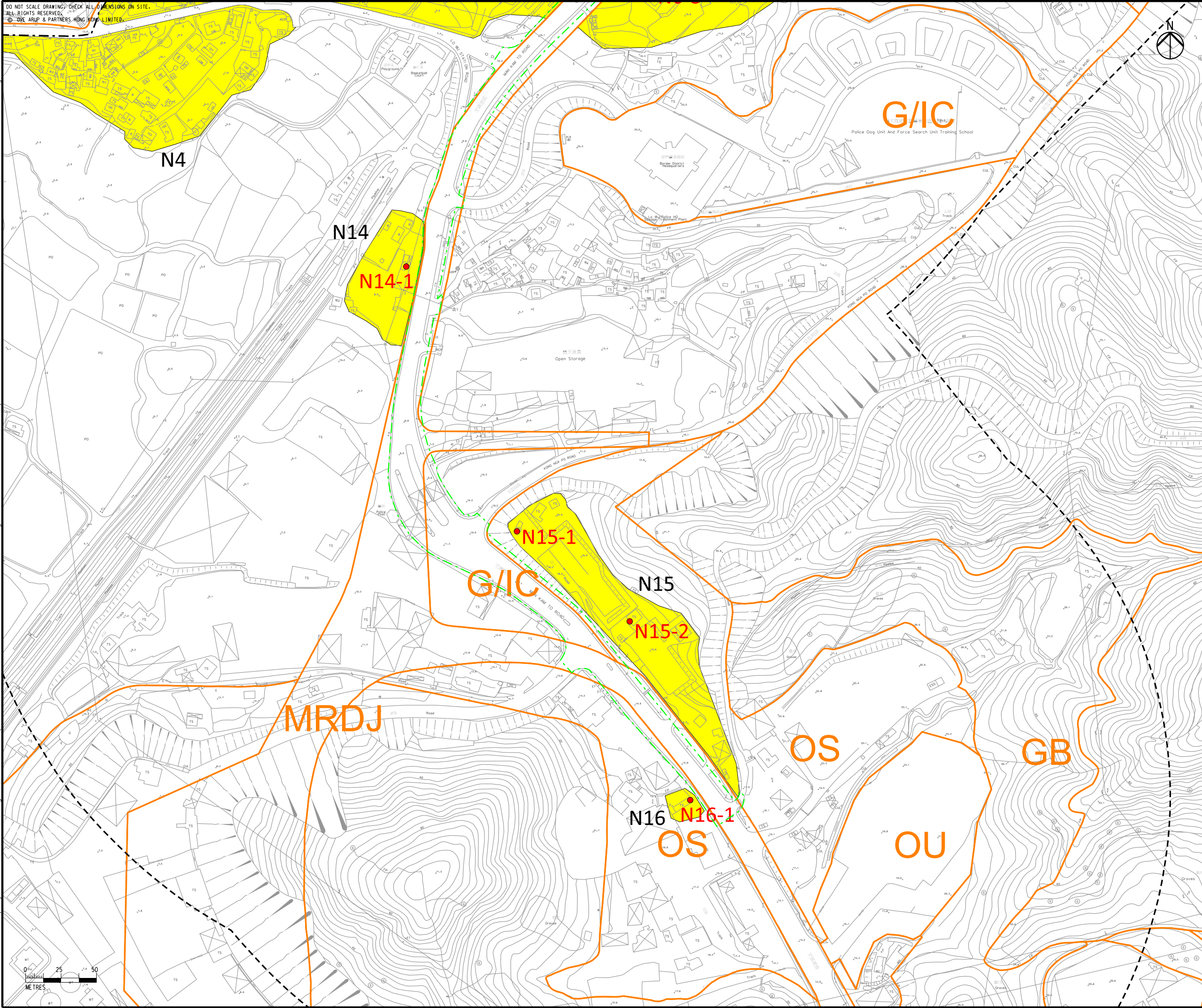
| | | | |
|---------------------------------|---------------|------------------------------|----------------|
| Drawing no. Figure 5.5.5 | | Rev. F | |
| Drawn GL | Date 02/16 | Checked EL | Approved ST |
| Scale 1:2500 @A3 | | Status PRELIMINARY | |

COPYRIGHT RESERVED

土木工程拓展署
 Civil Engineering and Development Department

DO NOT SCALE DRAWING. CHECK ALL DIMENSIONS ON SITE.
 ALL RIGHTS RESERVED.
 © OVE ARUP & PARTNERS HONG KONG LIMITED.

Printed by : 1/22/2016
 Filename : G:\env\project\2314448\13 Drawing Deliverables\Reports\015 EIA\20151203 Final EIA\Ch 5 Noise\Figure 5.5.6 - Locations of Representative Noise Sensitive Receivers (Construction Noise) (Sheet 6 of 8).dgn



Legend

- Project Boundary
- Utilities Construction
- 300m Assessment Area
- Area with Representative Noise Sensitive Use
- Representative Noise Sensitive Receivers (Existing)

Outline Zoning Plan
 (Ref: Fu Tei Au & Sha Ling OZP (S/NE-FTA/14) and Man Kam To OZP (S/NE-MKT/1) & (S/NE-MKT/2))

- AGR Agriculture
- CA Conservation Area
- G/IC Government/ Institution/ Community
- GB Green Belt
- OU Other Specified Used
- OS Open Storage
- U Undetermined
- V Village Type Development
- MRDJ Road

| | | | |
|-----|--------------|----|-------|
| D | FOURTH ISSUE | GL | 12/15 |
| C | THIRD ISSUE | GL | 10/15 |
| B | SECOND ISSUE | GL | 11/14 |
| A | FIRST ISSUE | KY | 08/14 |
| Rev | Description | By | Date |

Consultant
ARUP

Contract No. and Title:
 Agreement No. CE 1/2013(CE)
 Site Formation and Associated Infrastructural Works for Development of Columbarium, Crematorium and Related Facilities at Sandy Ridge Cemetery - Design and Construction

Drawing title
 Locations of Representative Noise Sensitive Receivers (Construction Noise) (Sheet 6 of 8)

| | | | |
|---------------------------------|---------------|------------------------------|----------------|
| Drawing no. Figure 5.5.6 | | Rev. D | |
| Drawn GL | Date 12/15 | Checked EL | Approved ST |
| Scale 1:2500 @A3 | | Status PRELIMINARY | |

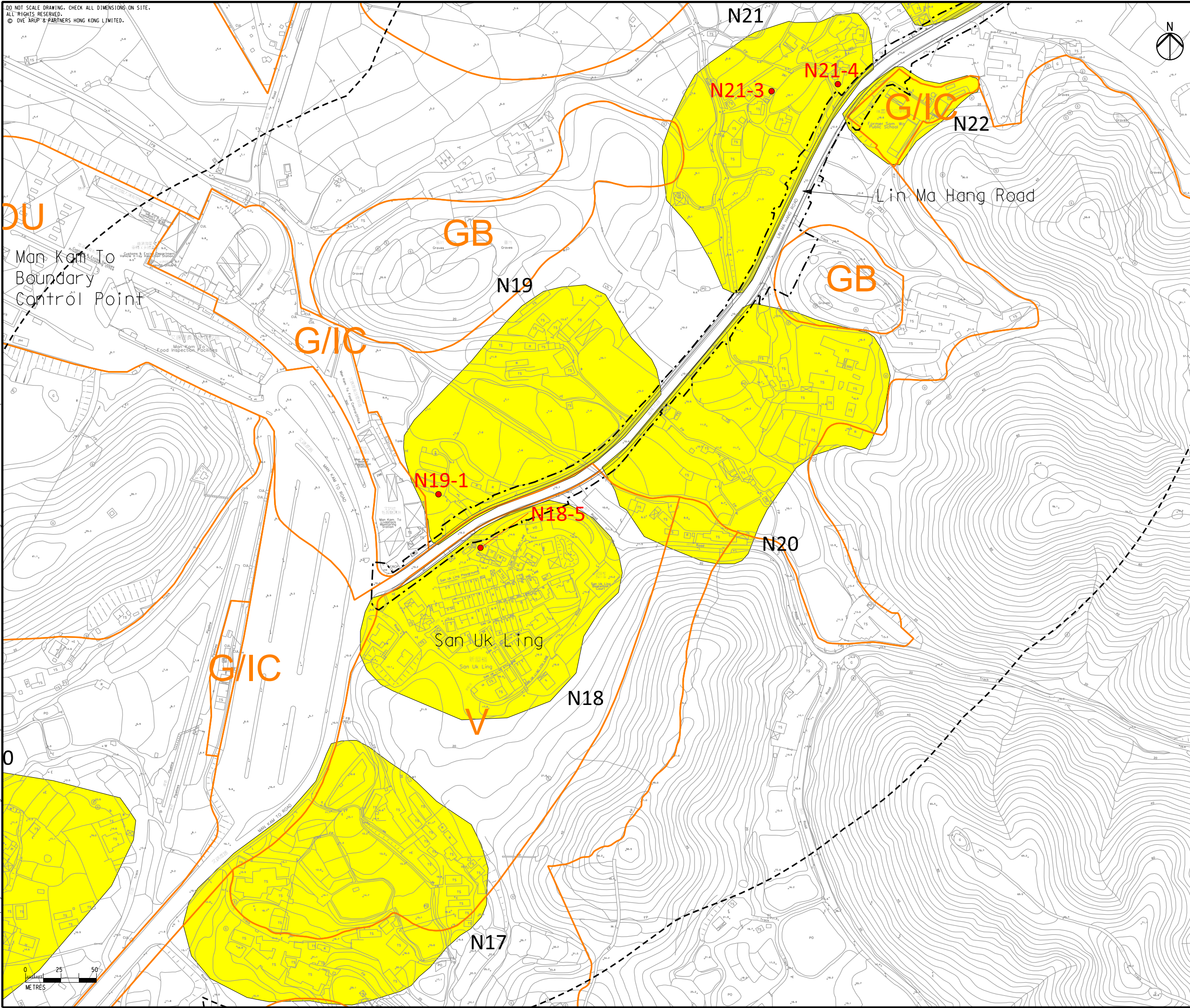
COPYRIGHT RESERVED



土木工程拓展署
 Civil Engineering and Development Department

DO NOT SCALE DRAWING. CHECK ALL DIMENSIONS ON SITE.
 ALL RIGHTS RESERVED.
 © OVE ARUP & PARTNERS HONG KONG LIMITED.

Printed by : 1/22/2016
 Filename : G:\env\project\231448\13 Drawing Deliverables\Reports\015 EIA\20151203 Final EIA\Ch 5 Noise\Figure 5.5.7 - Locations of Representative Noise Sensitive Receivers (Construction Noise) (Sheet 7 of 8).dgn



Legend

- Project Boundary
- 300m Assessment Area
- Area with Representative Noise Sensitive Use
- Representative Noise Sensitive Receivers (Existing)

Outline Zoning Plan
 (Ref: Fu Tei Au & Sha Ling OZP (S/NE-FTA/14) and Man Kam To OZP (S/NE-MKT/1) & (S/NE-MKT/2))

- AGR** Agriculture
- CA** Conservation Area
- G/IC** Government/ Institution/ Community
- GB** Green Belt
- OU** Other Specified Used
- OS** Open Storage
- U** Undetermined
- V** Village Type Development
- MRDJ** Road

| | | | |
|-----|--------------|----|-------|
| E | FIFTH ISSUE | GL | 12/15 |
| D | FOURTH ISSUE | GL | 10/15 |
| C | THIRD ISSUE | GL | 02/15 |
| B | SECOND ISSUE | GL | 11/14 |
| Rev | Description | By | Date |

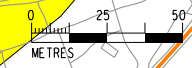
Consultant
ARUP

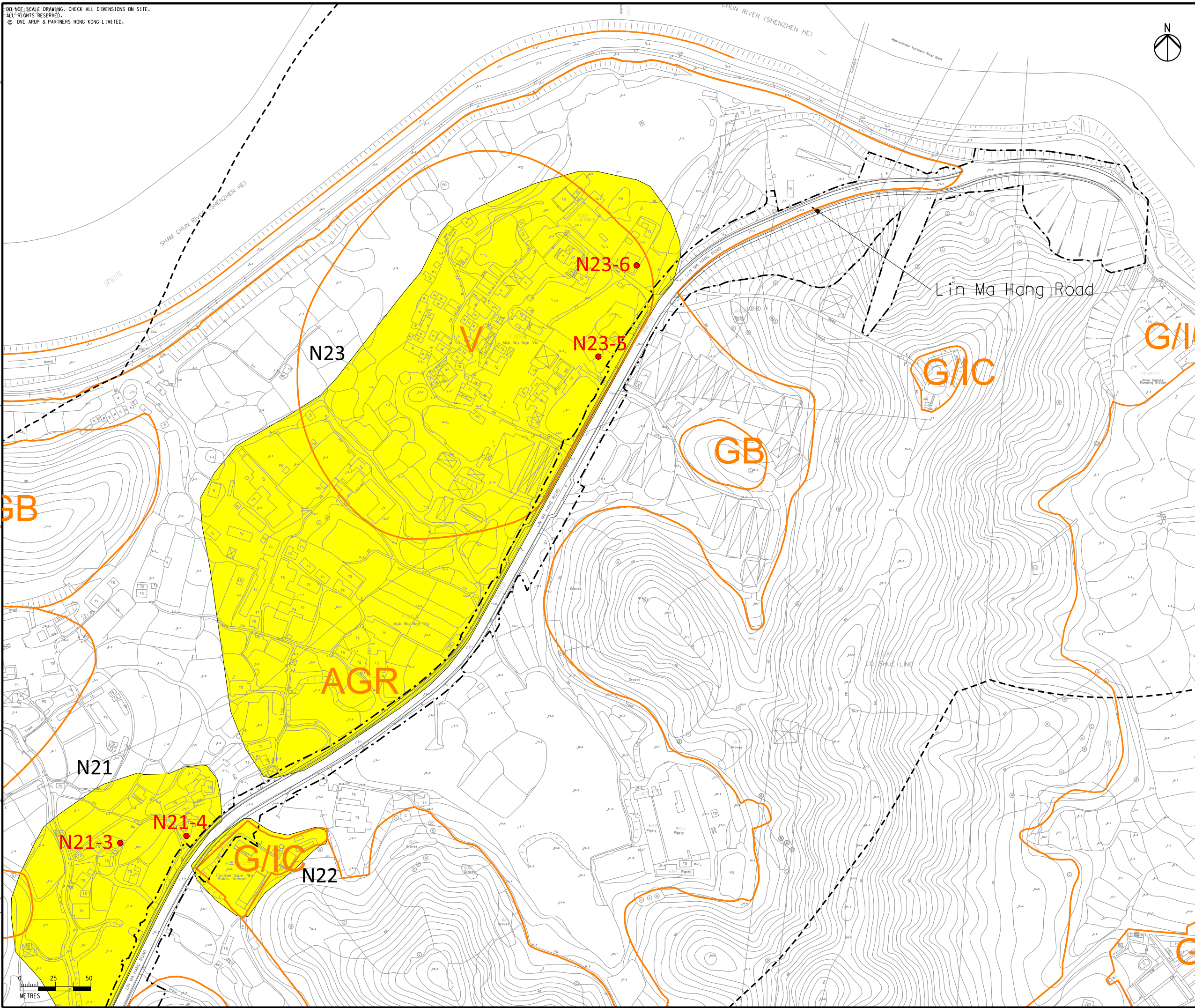
Contract No. and Title:
 Agreement No. CE 1/2013(CE)
 Site Formation and Associated Infrastructural Works for Development of Columbarium, Crematorium and Related Facilities at Sandy Ridge Cemetery - Design and Construction

Drawing title
Locations of Representative Noise Sensitive Receivers (Construction Noise) (Sheet 7 of 8)

| | | | |
|---------------------------------|---------------|------------------------------|----------------|
| Drawing no. Figure 5.5.7 | | Rev. E | |
| Drawn GL | Date 12/15 | Checked EL | Approved ST |
| Scale 1:2500 @A3 | | Status PRELIMINARY | |

COPYRIGHT RESERVED





Legend

- Project Boundary
- 300m Assessment Area
- Area with Representative Noise Sensitive Use
- Representative Noise Sensitive Receivers (Existing)

Outline Zoning Plan

(Ref: Fu Tei Au & Sha Ling OZP (S/NE-FTA/14) and Man Kam To OZP (S/NE-MKT/1) & (S/NE-MKT/2))

- AGR Agriculture
- CA Conservation Area
- G/IC Government/ Institution/ Community
- GB Green Belt
- OU Other Specified Used
- OS Open Storage
- U Undetermined
- V Village Type Development
- MRDJ Road

| | | | |
|-----|--------------|----|-------|
| D | FOURTH ISSUE | GL | 12/15 |
| C | THIRD ISSUE | GL | 10/15 |
| B | SECOND ISSUE | GL | 11/14 |
| A | FIRST ISSUE | KY | 08/14 |
| Rev | Description | By | Date |

Consultant
ARUP

Contract No. and Title:
 Agreement No. CE 1/2013(CE)
 Site Formation and Associated Infrastructural Works for Development of Columbarium, Crematorium and Related Facilities at Sandy Ridge Cemetery - Design and Construction

Drawing title
 Locations of Representative Noise Sensitive Receivers (Construction Noise) (Sheet 8 of 8)

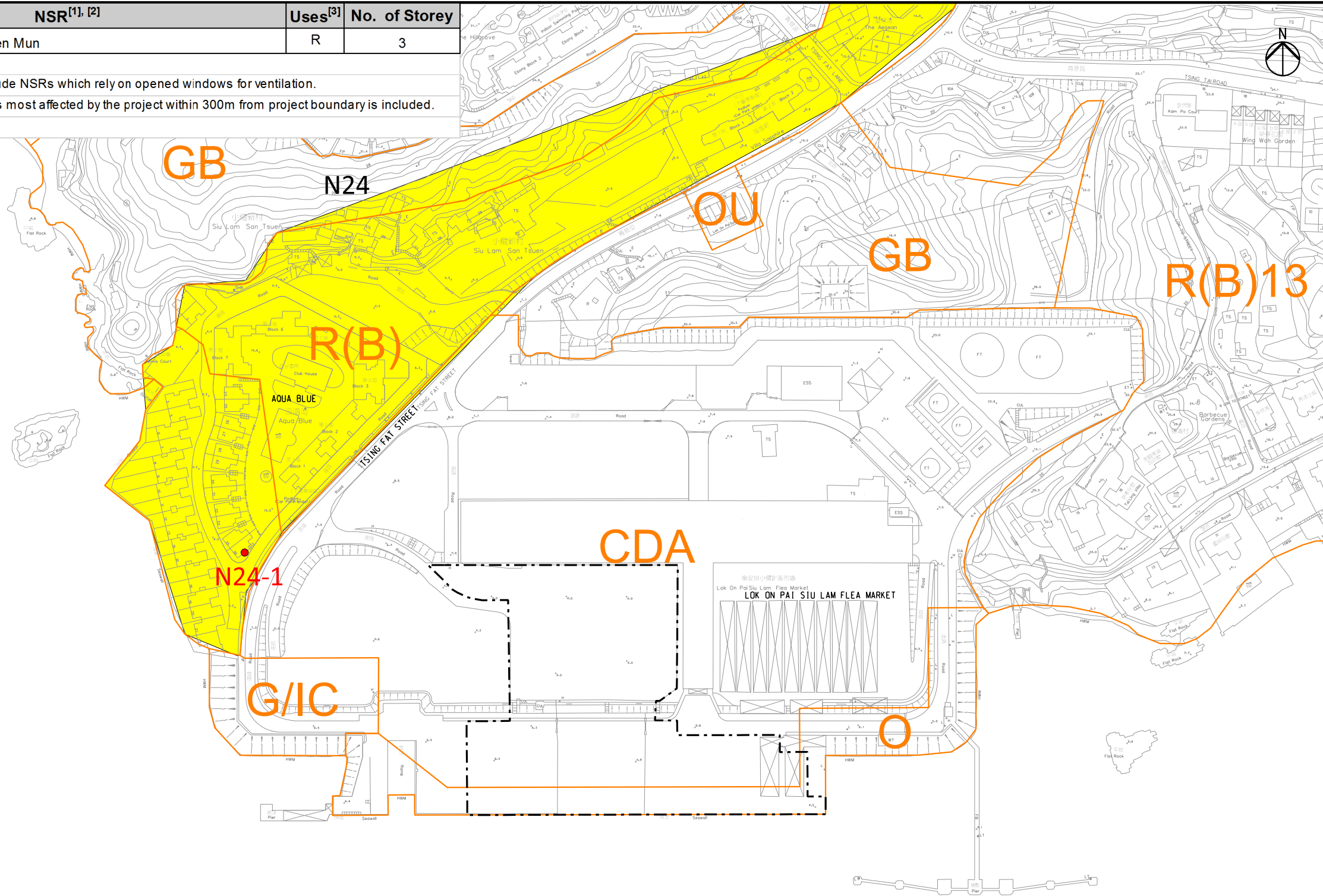
| | | | |
|-------------|--------------|---------|-------------|
| Drawing no. | Figure 5.5.8 | Rev. | D |
| Drawn | Date | Checked | Approved |
| GL | 12/15 | EL | ST |
| Scale | 1:2500 @A3 | Status | PRELIMINARY |

COPYRIGHT RESERVED



| No. | NSR ^{[1], [2]} | Uses ^[3] | No. of Storey |
|-----|------------------------------|---------------------|---------------|
| N24 | Aqua Blue Block 36, Tuen Mun | R | 3 |

Note:
 [1] The assessment will only include NSRs which rely on opened windows for ventilation.
 [2] The first layer of NSRs which is most affected by the project within 300m from project boundary is included.
 [3] R – Residential Premises.



Legend

| | |
|--|--|
| | Barging Point Boundary |
| | Area with Representative Noise Sensitive Use |
| | Representative Noise Sensitive Receiver (Existing) |

Outline Zoning Plan
 (Ref: TUEN MUN OZP (S/TM/33 - Tuen Mun)

| | | |
|--|------|------------------------------------|
| | CDA | Comprehensive Development Area |
| | G/IC | Government/ Institution/ Community |
| | GB | Green Belt |
| | OU | Other Specified Uses |
| | O | Open Space |
| | R(B) | Residential (Group B) |

| Rev | Description | By | Date |
|-----|--------------|----|-------|
| B | SECOND ISSUE | GL | 03/16 |
| A | FIRST ISSUE | KY | 10/15 |

Consultant
ARUP

Contract No. and Title:
 Agreement No. CE 1/2013(CE)
 Site Formation and Associated Infrastructural Works for Development of Columbarium, Crematorium and Related Facilities at Sandy Ridge Cemetery - Design and Construction

Drawing title
 Location of Representative Noise Sensitive Receiver (Construction Noise) (Barging Point)

| | | | |
|---------------------------------|---------------|-----------------------|----------------|
| Drawing no. Figure 5.5.9 | | Rev. B | |
| Drawn GL | Date 03/16 | Checked EL | Approved ST |
| Scale 1:2500 @A3 | | Status PRELIMINARY | |



Printed by : 3/1/2016
 Filename : G:\env\project\2314448\13 Drawing Deliverables\Reports\015 EIA\20160229 Revised FinalEIA_v1\Ch 5 Noise\Figure 5.5.9 - Locations of Representative Noise Sensitive Receivers (Barging Point).dgn

