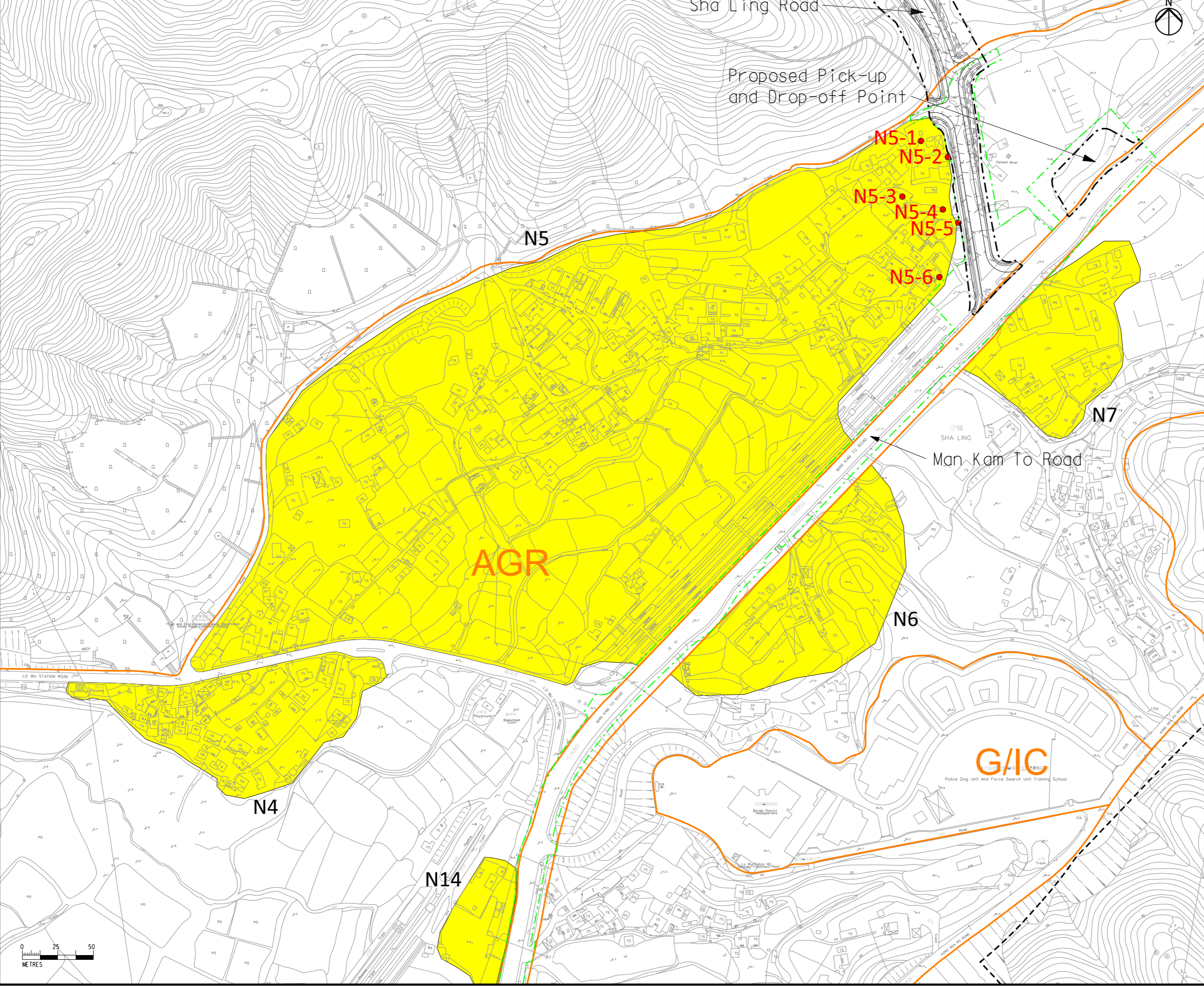


Printed by : 2/29/2016
 File name : G:\env\project\231448\13 Drawing Deliverables\Reports\015 EIA\20160229 Revised Final EIA_v1\Ch 5 Noise\Figure 5.6.3 - Locations of Representative Noise Sensitive Receivers (Road Traffic Noise) (Sheet 3 of 8).dgn

DO NOT SCALE DRAWING. CHECK ALL DIMENSIONS ON SITE.
 ALL RIGHTS RESERVED.
 © 2016 ARUP & PARTNERS HONG KONG LIMITED.



Legend

- Project Boundary
- Utilities Construction
- 300m Assessment Area
- Area with Representative Noise Sensitive Use
- Representative Noise Sensitive Receivers (Existing)

Outline Zoning Plan
 (Ref: Fu Tei Au & Sha Ling OZP (S/NE-FTA/14) and Man Kam To OZP (S/NE-MKT/1) & (S/NE-MKT/2))

- AGR Agriculture
- CA Conservation Area
- G/I/C Government/ Institution/ Community
- GB Green Belt
- OU Other Specified Used
- OS Open Storage
- U Undetermined
- V Village Type Development
- MRDJ Road

F	SIXTH ISSUE	GL	02/16
E	FIFTH ISSUE	GL	12/15
D	FOURTH ISSUE	GL	10/15
C	THIRD ISSUE	GL	02/15
Rev	Description	By	Date

Consultant
ARUP

Contract No. and Title:
 Agreement No. CE 1/2013(CE)
 Site Formation and Associated Infrastructural Works for Development of Columbarium, Crematorium and Related Facilities at Sandy Ridge Cemetery - Design and Construction

Drawing title
Locations of Representative Noise Sensitive Receivers (Road Traffic Noise) (Sheet 3 of 8)

Drawing no. Figure 5.6.3		Rev. F	
Drawn GL	Date 02/16	Checked EL	Approved ST
Scale 1:2500 @A3		Status PRELIMINARY	

COPYRIGHT RESERVED
土木工程拓展署
 Civil Engineering and Development Department