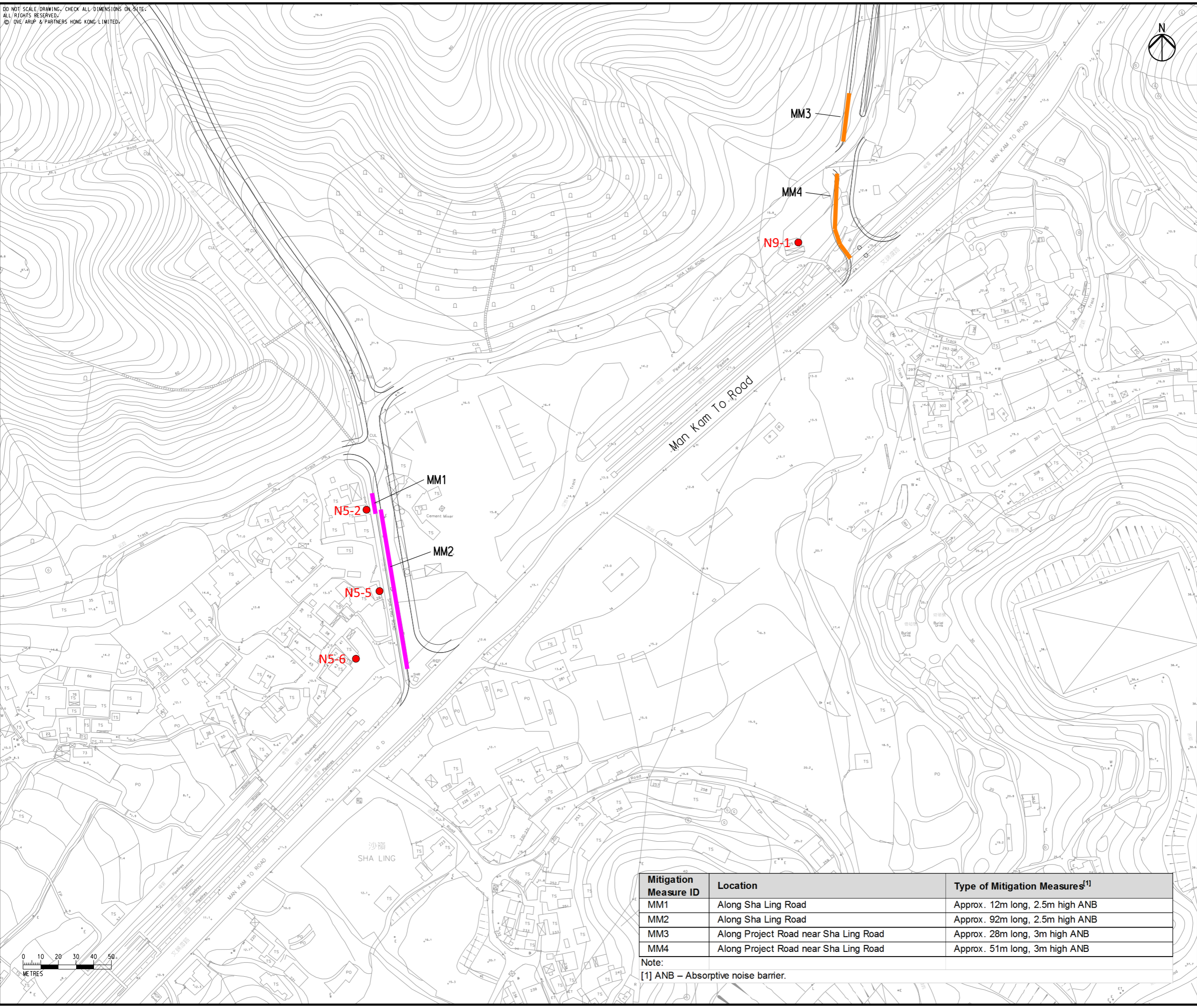


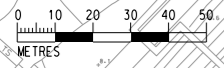
Printed by : 3/3/2016  
 Filename : G:\env\project\2314448\13 Drawing Deliverables\Reports\018 EM&A Manual\20160226 Revised Final\_v1\Figure 6.1.2 - Extents and Locations of Noise Mitigation Measures (for Existing Representative NSRs) (Sheet 2 of 3).dgn

DO NOT SCALE DRAWING. CHECK ALL DIMENSIONS ON SITE.  
 ALL RIGHTS RESERVED.  
 © OVE ARUP & PARTNERS HONG KONG LIMITED.



**Legend**

- Proposed Road Network
- 2.5m Absorptive Noise Barrier
- 3m Absorptive Noise Barrier
- Representative Noise Sensitive Receivers (Road Traffic Noise)



Mitigation Measure ID	Location	Type of Mitigation Measures <sup>[1]</sup>
MM1	Along Sha Ling Road	Approx. 12m long, 2.5m high ANB
MM2	Along Sha Ling Road	Approx. 92m long, 2.5m high ANB
MM3	Along Project Road near Sha Ling Road	Approx. 28m long, 3m high ANB
MM4	Along Project Road near Sha Ling Road	Approx. 51m long, 3m high ANB

Note:  
 [1] ANB – Absorptive noise barrier.

F	SIXTH ISSUE	GL	02/16
E	FIFTH ISSUE	GL	12/15
D	FOURTH ISSUE	GL	10/15
C	THIRD ISSUE	GL	02/15
Rev	Description	By	Date

Consultant  
**ARUP**

Contract No. and Title:  
 Agreement No. CE 1/2013(CE)  
 Site Formation and Associated Infrastructural Works for Development of Columbarium, Crematorium and Related Facilities at Sandy Ridge Cemetery - Design and Construction

Drawing title  
 Extents and Locations of Noise Mitigation Measures (for Existing Representative NSRs) (Sheet 2 of 3)

Drawing no. Figure 6.1.2		Rev. F	
Drawn GL	Date 02/16	Checked EL	Approved ST
Scale 1:2000 @A3		Status PRELIMINARY	

COPYRIGHT RESERVED



土木工程拓展署  
 Civil Engineering and Development Department