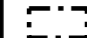

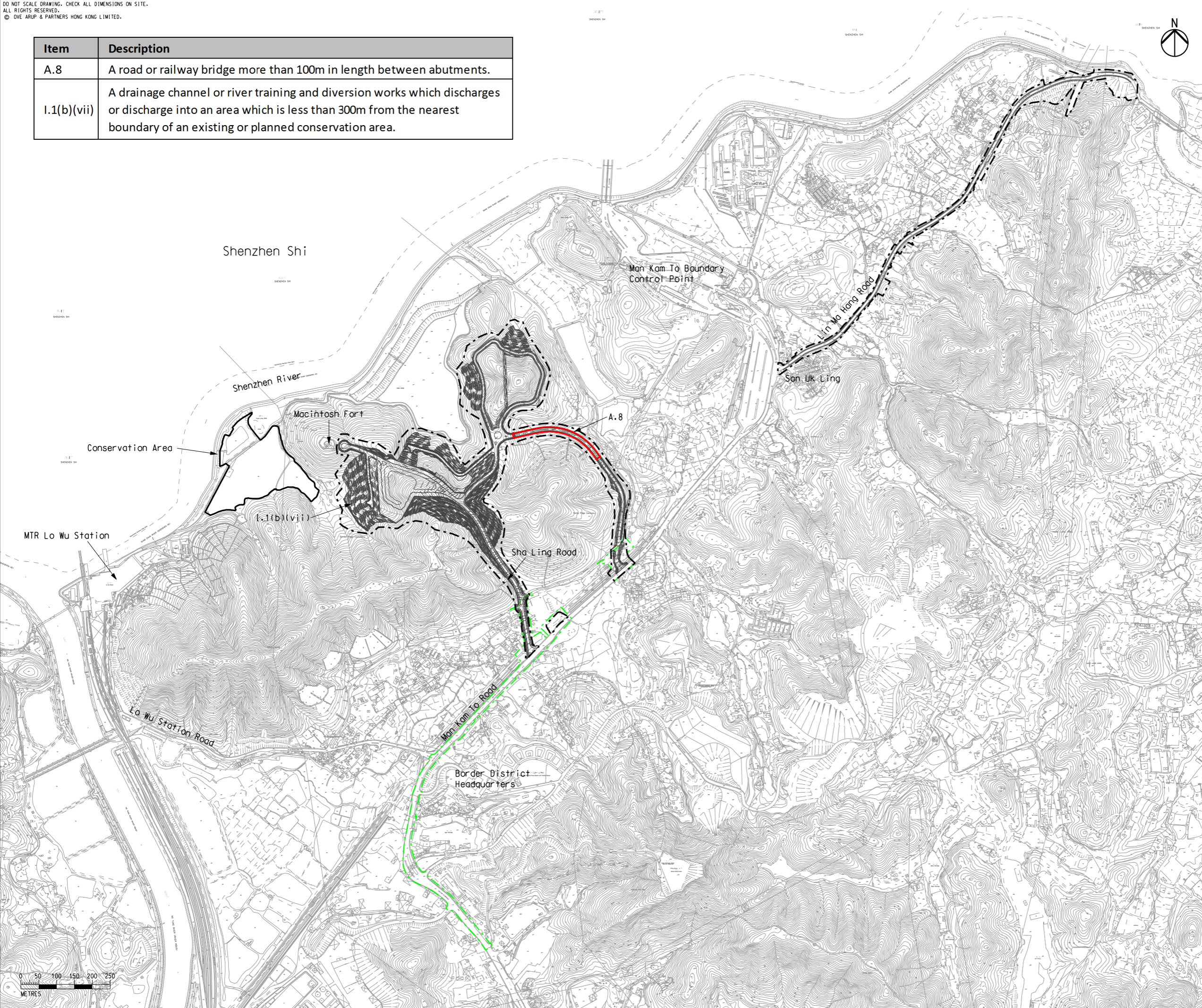


Item	Description
A.8	A road or railway bridge more than 100m in length between abutments.
I.1(b)(vii)	A drainage channel or river training and diversion works which discharges or discharge into an area which is less than 300m from the nearest boundary of an existing or planned conservation area.

Legend

-  Project Boundary
-  Utilities Construction

Printed by : 3/1/2016
 Filename : G:\env\project\231448\13 Drawing Deliverables\Reports\015 EIA\20160229 Revised FinalEIA_v1\Ch 1 Intro\Figure 1.4 - Locations of Designated Projects.dgn



G	SEVENTH ISSUE	GL	02/16
F	SIXTH ISSUE	GL	01/16
E	FIFTH ISSUE	GL	12/15
D	FOURTH ISSUE	GL	10/15
Rev	Description	By	Date

Consultant
ARUP

Contract No. and Title:
 Agreement No. CE 1/2013(CE)
 Site Formation and Associated
 Infrastructural Works for Development
 of Columbarium, Crematorium and
 Related Facilities at Sandy Ridge
 Cemetery - Design and Construction

Drawing title
**Locations of
 Designated Projects**

Drawing no. Figure 1.4		Rev. G	
Drawn GL	Date 02/16	Checked EL	Approved ST
Scale 1:10000 @A3		Status PRELIMINARY	

COPYRIGHT RESERVED



土木工程拓展署
 Civil Engineering and
 Development Department

