



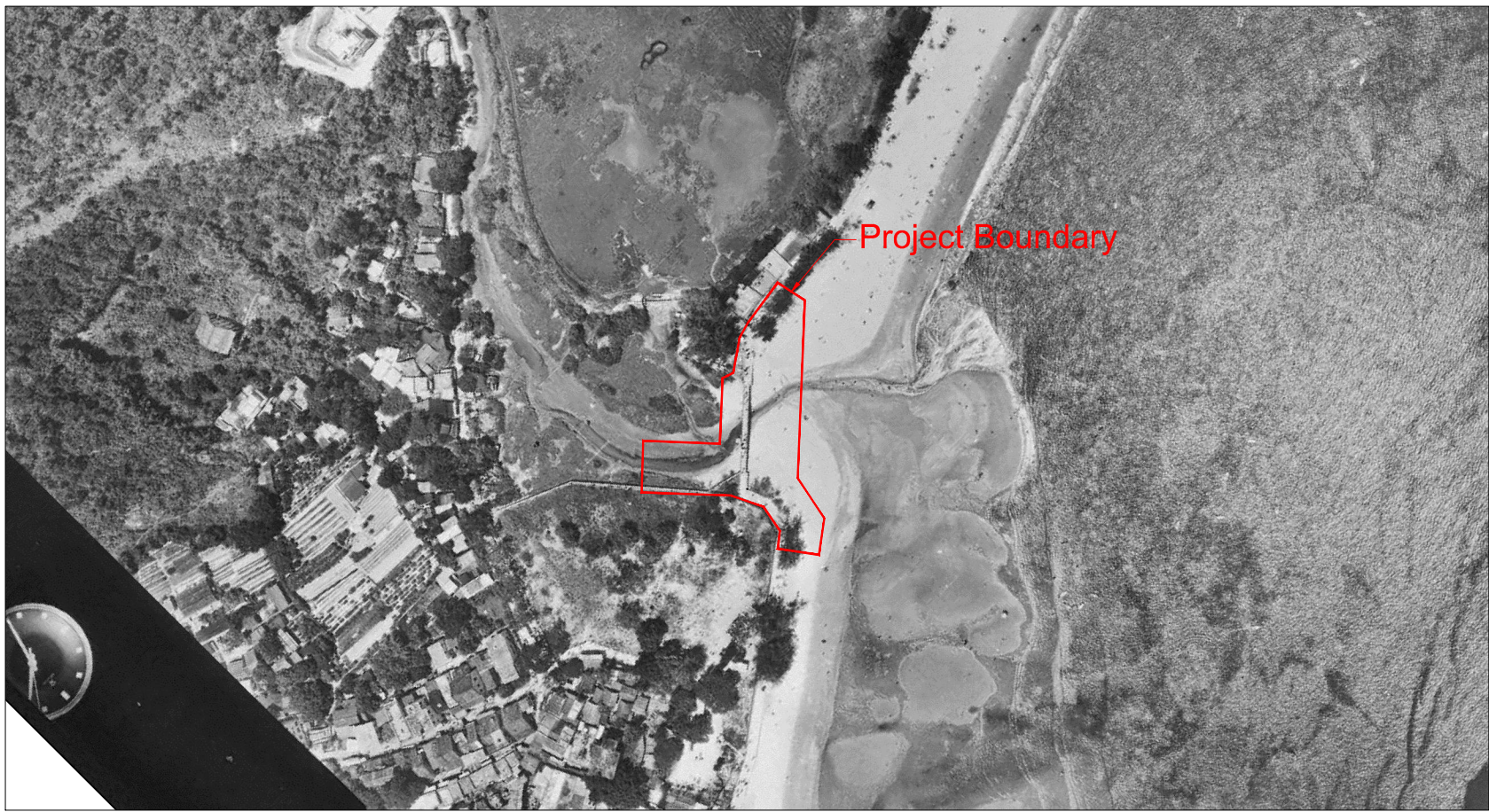
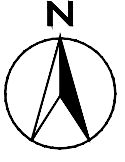
Year: 1945

- Very extensive agricultural land in Tai Wai Yuen and at the foot of Butterfly Hill
- Old bridges at mouth of Wang Tong River
- Wang Tong River was untrained and had large mudflat at river mouth



Year: 1973

- The now Wang Tong River Bridge was constructed.
- Shape of Wang Tong River as now
- Houses built at Tung Wan Tau Road and along Wang Tong River at the foot of Butterfly Hill



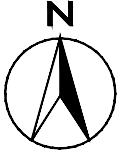
Year: 1976

- Road constructed along Silvermine Bay Beach
- Structure at the now Silvermine Beach Resort demolished



Year: 1982

- Construction of Silvermine Beach Resort (South Wing)



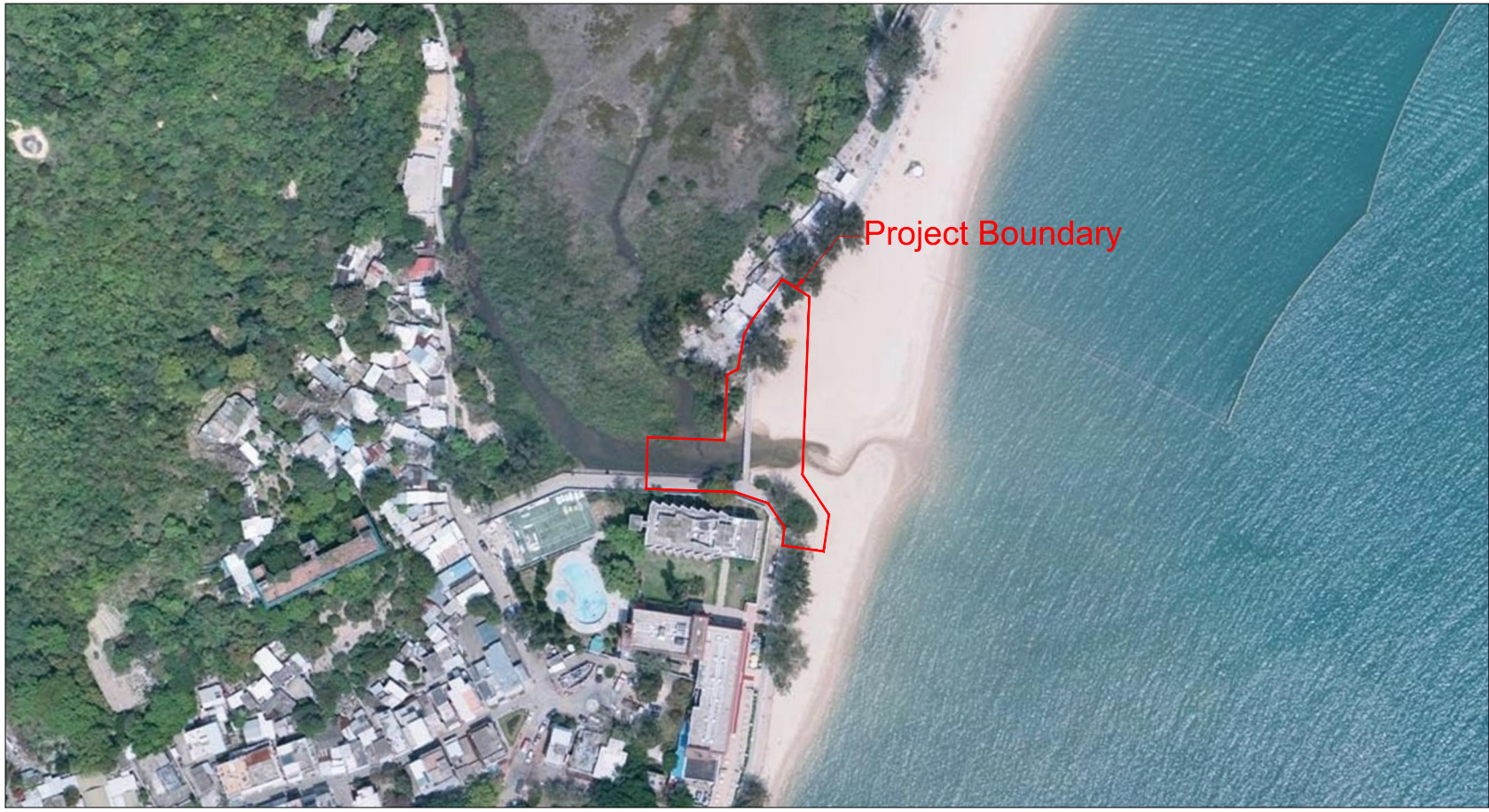
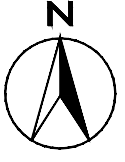
Year: 1991

- Development of Silvermine Beach Resort (North Wing)



Year: 2010

- Barge berthed in waters in front of Silvermine Beach Resort, area of beach between front of Silvermine Beach Resort and Wang Tong River reduced



Year: 2014

- Latest Aerial Photo