

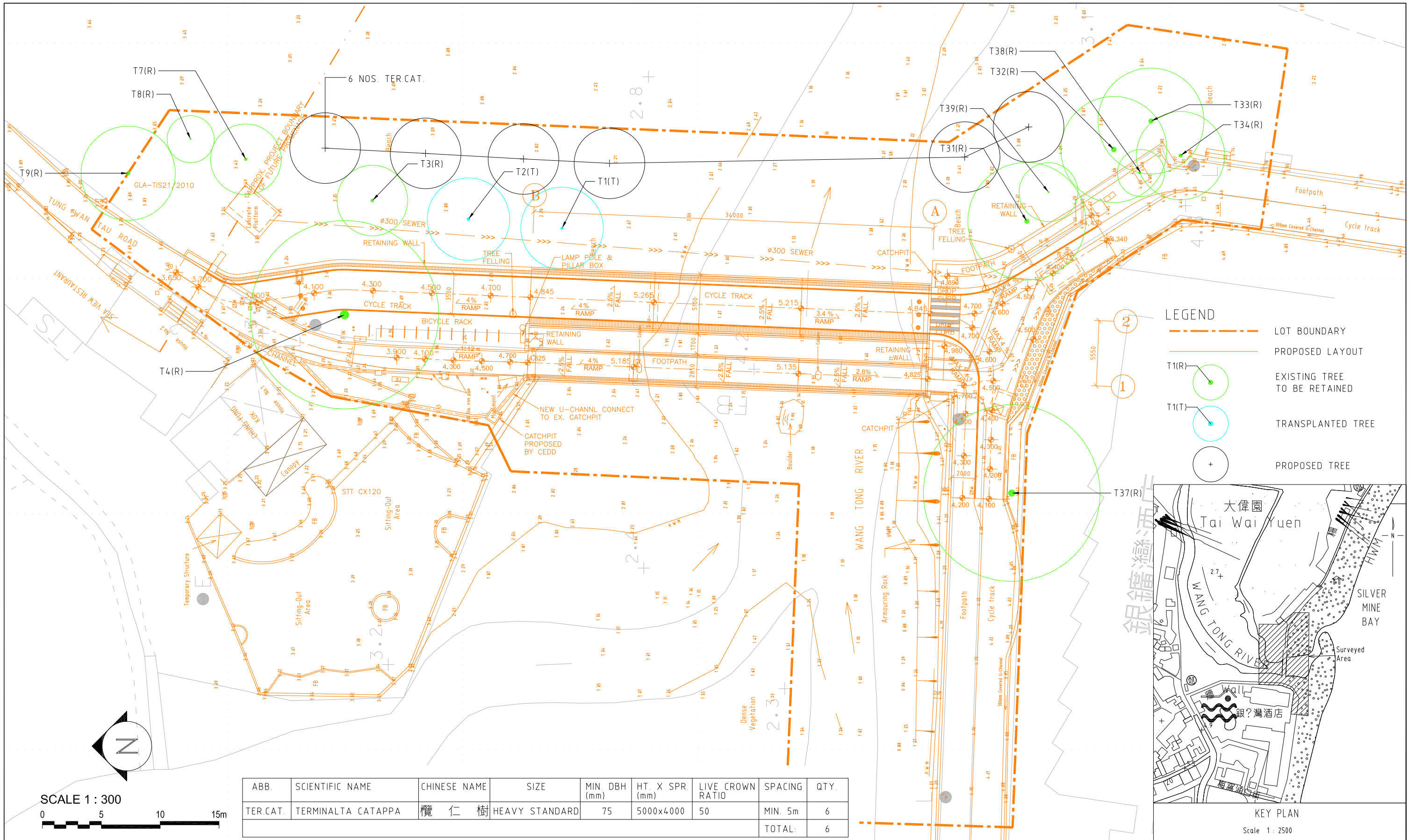
Amendment No.	Date	Description	Drawn by	Checked by	Approved by
B	DEC 2015	RECOMMENDATION REVISED FOR TREE NO. T4	AC	TO	TO
A	DEC 2015	HOARDING AREAS ADDED	AC	TO	TO

Job Title AGREEMENT NO. CE 14/2014(HY) NEW WANG TONG RIVER BRIDGE, MUI MO					
Drawing Title TREE RECOMMENDATION PLAN					
Drawn by	AC	Checked by	PW	Approved by	TO
Date	FEB2015				

Drawing No.	MLAL1-TS02
Scale	1:300
Job No.	MLAL1

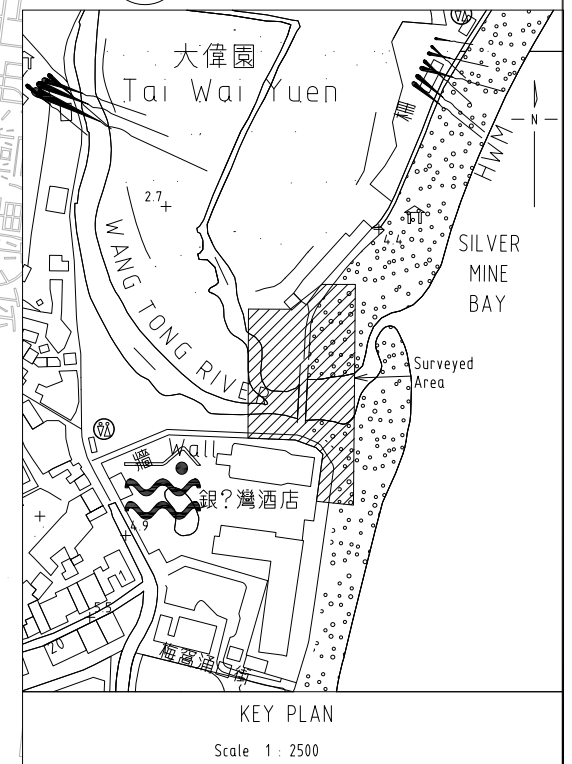
The joint venture of Maurice Lee & Associates Ltd. and Cinotech Consultants Ltd.

I:\MLAL1\DWG-GA\MLAL1_TS02.dwg, Layout, 28/Dec/2015 10:48:22, Amy, PostScript Custom Page Size, 1:1



LEGEND

- LOT BOUNDARY
- PROPOSED LAYOUT
- EXISTING TREE TO BE RETAINED
- TRANSPLANTED TREE
- + PROPOSED TREE



SCALE 1 : 300
 0 5 10 15m

ABB.	SCIENTIFIC NAME	CHINESE NAME	SIZE	MIN. DBH (mm)	HT. X SPR. (mm)	LIVE CROWN RATIO	SPACING	QTY.
TER.CAT.	TERMINALTA CATAPPA	欖仁樹	HEAVY STANDARD	75	5000x4000	50	MIN. 5m	6
TOTAL:								6

						Job Title AGREEMENT NO. CE 14/2014(HY) NEW WANG TONG RIVER BRIDGE, MUI MO				Drawing No. MLAL1-CP01		The joint venture of Maurice Lee & Associates Ltd. and Cinotech Consultants Ltd. 		
						Drawing Title COMPENSATORY PLANTING PLAN				Scale 1:300				
Amendment No.	Date	Description	Drawn by	Checked by	Approved by	Drawn by	AC	Checked by	PW	Approved by	TO	Date	Job No.	MLAL1
A	DEC 2015	RECOMMENDATION REVISED FOR TREE NO. T4	AC	TO	TO							MAR2015		

Tree Assessment Schedule

Project Title: Agreement No. CE 14/2-14 (HY) New Wang Tong River Bridge, Mui Wo

Date of Tree Si 15/09/2014 and 16/02/2015

Surveyed by: Andre Le Claire & Pure Wong

Tree No.	Species		Measurements			Amenity value	Form	Health condition	Structural condition	Suitability for transplanting		Conservation status	Recommendation (retain/transplant/fell)	Justification	Department to provide expert advice to LandsD	Additional Remarks
	Scientific name	Chinese name	height (m)	DBH (mm)	crown spread (m)					(good/fair/poor)	(high/medium/low)					
T1	<i>Terminalia catappa</i>	欖仁樹	9.0	216.5	7.0	Fair	Good	Good	Fair	Medium	Located in sand limiting rootball formation; only bare root transplanting feasible	None	Transplant	Impacted by northern bridge ramp; Good Form & Health with Medium suitability for Transplanting	LCS D	Slightly over-topped tree.
T2	<i>Terminalia catappa</i>	欖仁樹	8.0	248.3	7.0	Fair	Fair	Good	Fair	Medium	Located in sand limiting rootball formation; only bare root transplanting feasible	None	Transplant	Impacted by northern bridge ramp footing excavations; Fair Form, Good Health with Medium suitability for Transplanting	LCS D	Over-topped tree.
T3	<i>Terminalia catappa</i>	欖仁樹	9.0	248.3	6.0	Fair	Fair	Good	Fair	Medium	Located in sand limiting rootball formation; only bare root transplanting feasible	None	Retain		LCS D	Form not typical due to previous failure.
T4	<i>Casuarina equisetifolia</i>	木麻黃	14.0	732.1	16.0	Good	Good	Fair	Good	Low	Mature specimen	None	Retain		LCS D	Quality specimen with a strong central leader. Good basal flare.
T6	<i>Casuarina equisetifolia</i>	木麻黃	11.0	366.1	6.0	Fair	Fair	Fair	Fair	Low	Evidence of stress	None	Fell	Impacted by northern bridge ramp footing excavations; only Fair Form, Health & Amenity Value and Low transplanting suitability	LCS D	Minor cavity, epicormic developments from burls.
T7	<i>Terminalia catappa</i>	欖仁樹	9.0	229.2	7.0	Fair	Fair	Good	Fair	Medium	Located in sand limiting rootball formation; only bare root transplanting feasible	None	Retain		LCS D	Trunk wound.
T8	<i>Terminalia catappa</i>	欖仁樹	5.0	95.5	4.0	Poor	Fair	Fair	Fair	Medium	Juvenile specimen	None	Retain		LCS D	No basal flare due to guying to the tree surround.
T9	<i>Ficus microcarpa</i>	榕樹	5.0	299.2	8.0	Fair	Fair	Good	Poor	Medium	Located in sand. Limitation	None	Retain		LCS D	Very broad specimen. Over-extended laterals. Medium sized cavity on lower main trunk with internal decay with wound wood development.
T27	<i>Macaranga tanarius var. tomentosa</i>	血桐	2.0	95.5	4.0	Poor	Poor	Good	Poor	Low	Growing on granite revetment	None	Fell	Impacted by existing bridge demolition and reconstruction works; impractical to transplant due to root environment in granite revetment	LCS D	Juvenile specimen.
T29	<i>Macaranga tanarius var. tomentosa</i>	血桐	5.0	283.3	5.0	Poor	Fair	Good	Poor	Low	Trunk leaning	None	Fell	Impacted by southern bridge ramp construction; trunk wounds and leaning form plus Low transplanting suitability.	LCS D	Significant trunk wound and basal damage.
T30	<i>Macaranga tanarius var. tomentosa</i>	血桐	4.5	213.3	4.0	Poor	Poor	Fair	Fair	Low	Numerous wounds	None	Fell	Impacted by southern bridge ramp construction; Poor Amenity Value & Form plus Low transplanting suitability.	LCS D	Asymmetrical tree: Incomplete union.
T31	<i>Casuarina equisetifolia</i>	木麻黃	12.0	382.0	10.0	Fair	Fair	Fair	Fair	Low	Low crown vitality	None	Retain		LCS D	Some cracks, wounds and pruning cuts observed although these are not considered threatening to the viability of the tree.
T32	<i>Hibiscus tiliaceus</i>	黃槿	8.0	423.4	9.0	Fair	Fair	Good	Fair	Low	Irregular specimen	None	Retain		LCS D	Poor previous pruning.
T33	<i>Hibiscus tiliaceus</i>	黃槿	8.0	375.6	9.0	Fair	Fair	Good	Fair	Low	Irregular specimen	None	Retain		LCS D	Poor previous pruning.
T34	<i>Casuarina equisetifolia</i>	木麻黃	12.0	292.8	7.5	Fair	Fair	Poor	Poor	Low	Wall impediment	None	Retain		LCS D	Numerous wounds created by pruning and previous failures.
T35	<i>Casuarina equisetifolia</i>	木麻黃	12.0	283.3	5.0	Fair	Fair	Poor	Poor	Low	Located in a paved tree surround	None	Fell	Impacted by southern bridge ramp construction; Poor Health & Structure plus Low transplanting suitability.	LCS D	Poor previous pruning, low foliage density.
T37	<i>Celtis sinensis</i>	朴樹	12.0	557.0	15.0	Fair	Good	Good	Good	Low	Growing location confined by wall & paving	None	Retain		LCS D	Quality specimen tree.
T38	<i>Ficus microcarpa</i>	榕樹	4.0	203.7	4.0	Poor	Poor	Poor	Poor	Low	Wall tree	None	Retain		LCS D	Rooting environment is shared between the planting pit and the beach wall. Severely asymmetrical.
T39	<i>Terminalia catappa</i>	欖仁樹	6.5	101.9	5.0	Poor	Fair	Good	Fair	Medium	Juvenile specimen	None	Retain		LCS D	Insect nest present. Trunk wounds observed.



Photo No. 1 | T1 (Transplant)



Photo No. 2 | T1 (Transplant)



Photo No. 3 | T2 (Transplant)



Photo No. 4 | T2 (Transplant)



Photo No. 5 | T3 (Retain)



Photo No. 6 | T3 (Retain)

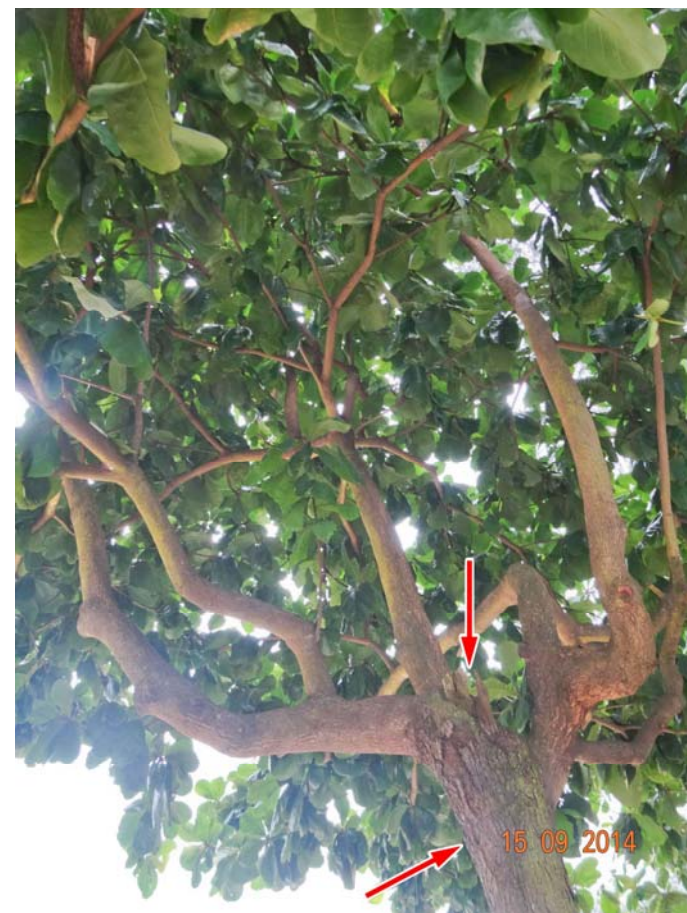


Photo No. 7 | T3 (Retain)



Photo No. 8 | T4 (Retain)

**AGREEMENT NO. CE 14/2-14 (HY) NEW WANG TONG RIVER BRIDGE, MUI WO
TREE SURVEY PHOTOGRAPHS**



Photo No. 9 | T4 (Retain)



Photo No. 10 | T4 (Retain)



Photo No. 11 | T6 (Fell)



Photo No. 12 | T6 (Fell)



Photo No. 13 | T6 (Fell)



Photo No. 14 | T6 (Fell)



Photo No. 15 | T6 (Fell)



Photo No. 16 | T7 (Retain)

**AGREEMENT NO. CE 14/2-14 (HY) NEW WANG TONG RIVER BRIDGE, MUI WO
TREE SURVEY PHOTOGRAPHS**



Photo No. 17 | T7 (Retain)



Photo No. 18 | T8 (Retain)



Photo No. 19 | T8 (Retain)



Photo No. 20 | T9 (Retain)



Photo No. 21 | T9 (Retain)



Photo No. 22 | T9 (Retain)



Photo No. 23 | T9 (Retain)



Photo No. 24 | T9 (Retain)

**AGREEMENT NO. CE 14/2-14 (HY) NEW WANG TONG RIVER BRIDGE, MUI WO
TREE SURVEY PHOTOGRAPHS**



Photo No. 25 | T9 (Retain)

NOT USED

NOT USED



Photo No. 26 | T27 (Fell)

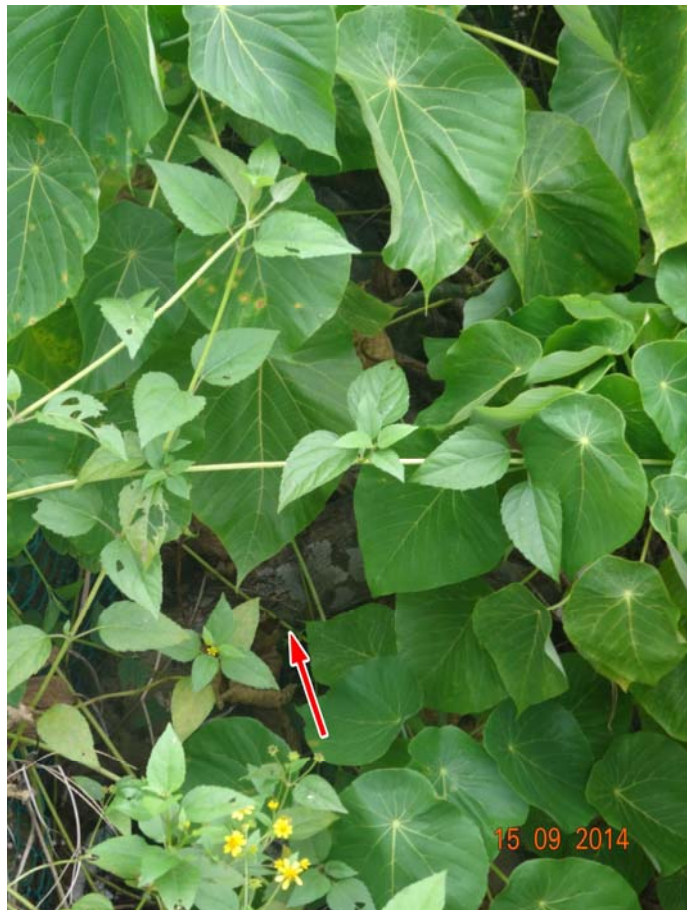


Photo No. 27 | T27 (Fell)



Photo No. 28 | T29 (Fell)



Photo No. 29 | T29 (Fell)



Photo No. 30 | T29 (Fell)

**AGREEMENT NO. CE 14/2-14 (HY) NEW WANG TONG RIVER BRIDGE, MUI WO
TREE SURVEY PHOTOGRAPHS**



Photo No. 31 | T29 (Fell)



Photo No. 32 | T30 (Fell)



Photo No. 33 | T30 (Fell)



Photo No. 34 | T30 (Fell)



Photo No. 35 | T31 (Retain)



Photo No. 36 | T31 (Retain)



Photo No. 37 | T31 (Retain)



Photo No. 38 | T31 (Retain)

**AGREEMENT NO. CE 14/2-14 (HY) NEW WANG TONG RIVER BRIDGE, MUI WO
TREE SURVEY PHOTOGRAPHS**



Photo No. 39 | T31 (Retain)



Photo No. 40 | T32 (Retain)



Photo No. 41 | T32 (Retain)



Photo No. 42 | T32 (Retain)



Photo No. 43 | T32 (Retain)



Photo No. 44 | T32 (Retain)



Photo No. 45 | T33 (Retain)

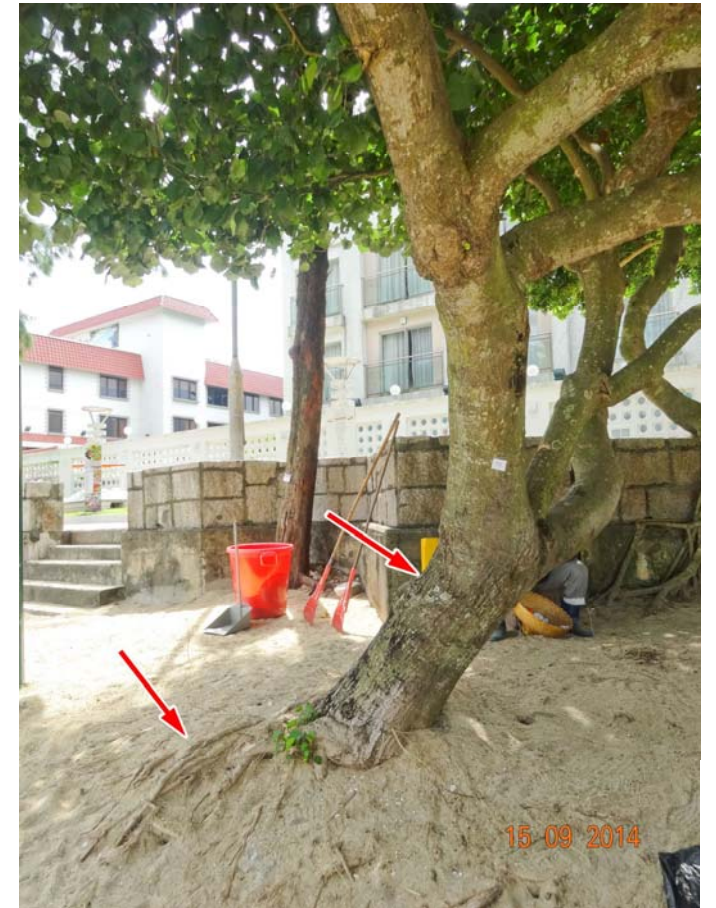


Photo No. 46 | T33 (Retain)

**AGREEMENT NO. CE 14/2-14 (HY) NEW WANG TONG RIVER BRIDGE, MUI WO
TREE SURVEY PHOTOGRAPHS**



Photo No. 47 | T33 (Retain)



Photo No. 48 | T33 (Retain)



Photo No. 49 | T33 (Retain)



Photo No. 50 | T34 (Retain)



Photo No. 51 | T34 (Retain)



Photo No. 52 | T34 (Retain)



Photo No. 53 | T34 (Retain)



Photo No. 54 | T35 (Fell)

**AGREEMENT NO. CE 14/2-14 (HY) NEW WANG TONG RIVER BRIDGE, MUI WO
TREE SURVEY PHOTOGRAPHS**



Photo No. 55 | T35 (Fell)

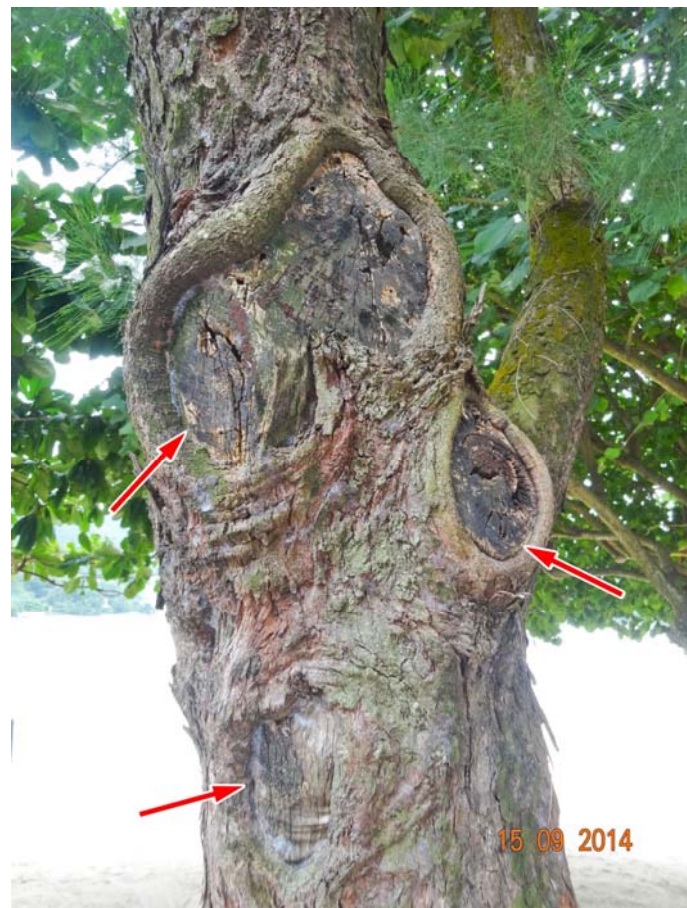


Photo No. 56 | T35 (Fell)



Photo No. 57 | T35 (Fell)



Photo No. 58 | T37 (Retain)



Photo No. 59 | T37 (Retain)



Photo No. 60 | T37 (Retain)



Photo No. 61 | T37 (Retain)



Photo No. 62 | T38 (Retain)

**AGREEMENT NO. CE 14/2-14 (HY) NEW WANG TONG RIVER BRIDGE, MUI WO
TREE SURVEY PHOTOGRAPHS**

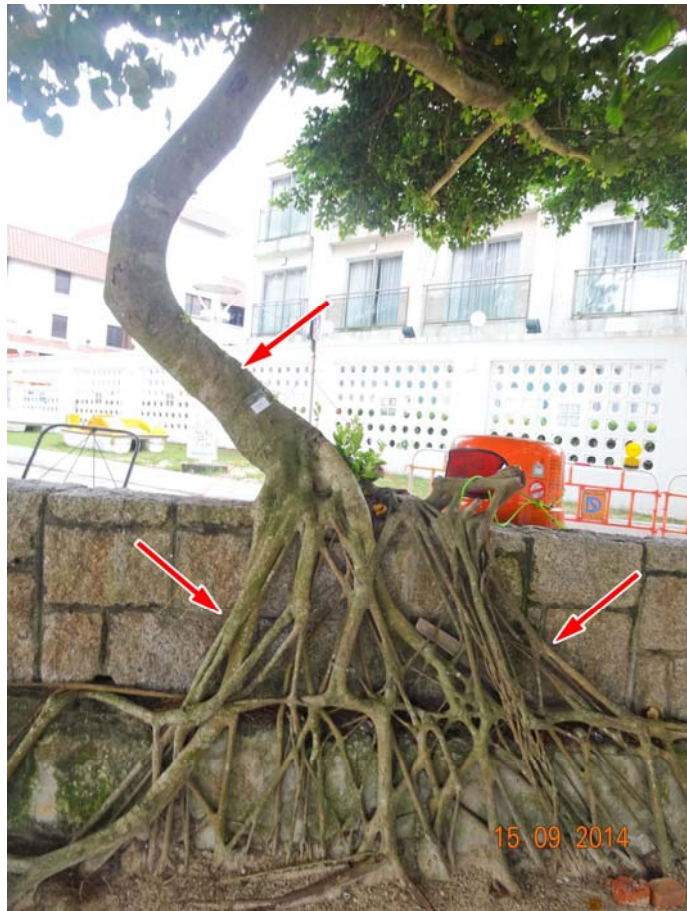


Photo No. 63 | T38 (Retain)



Photo No. 64 | T38 (Retain)



Photo No. 65 | T38 (Retain)



Photo No. 66 | T38 (Retain)



Photo No. 67 | T39 (Retain)



Photo No. 68 | T39 (Retain)



Photo No. 69 | T39 (Retain)

**AGREEMENT NO. CE 14/2-14 (HY) NEW WANG TONG RIVER BRIDGE, MUI WO
TREE SURVEY PHOTOGRAPHS**