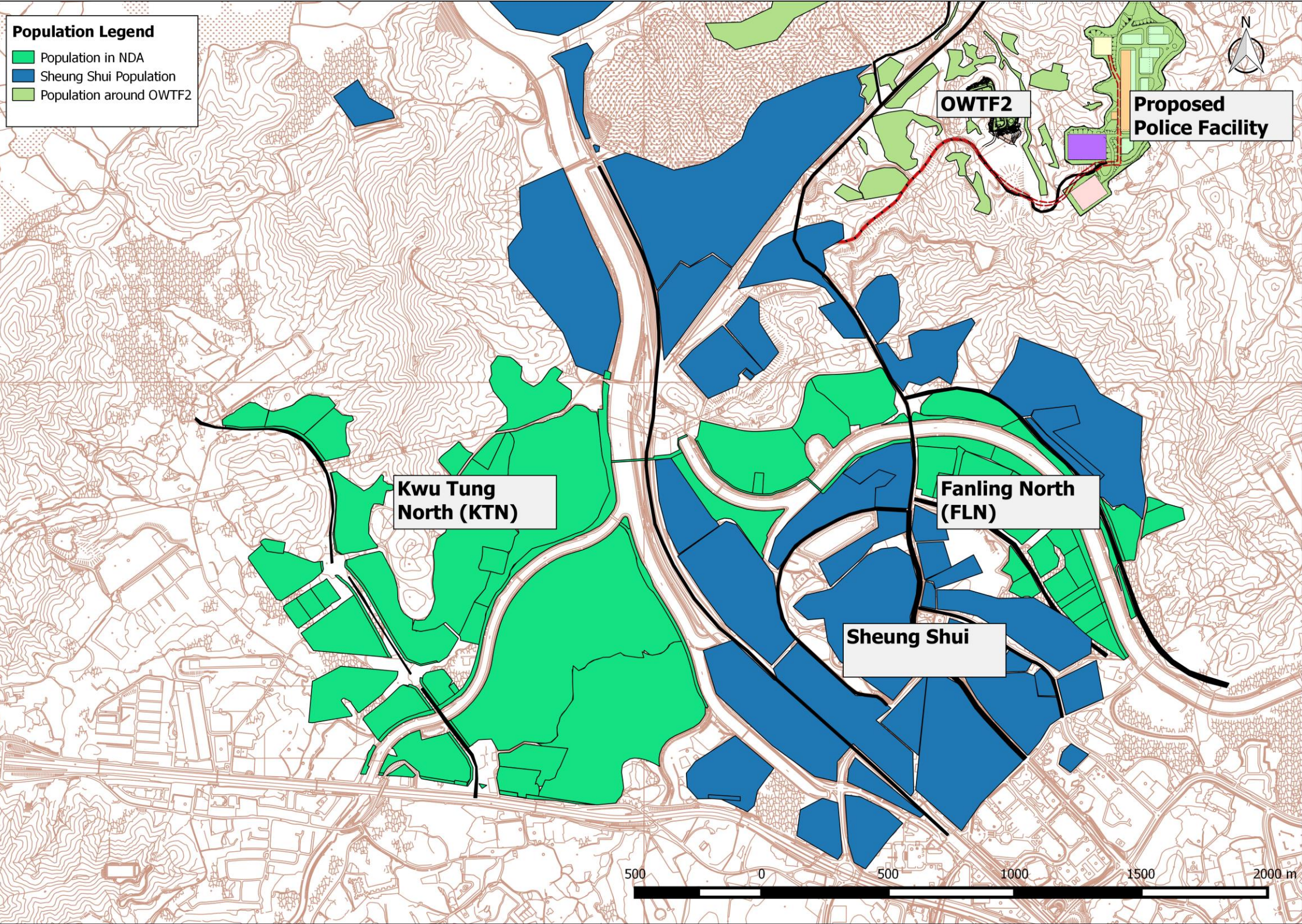


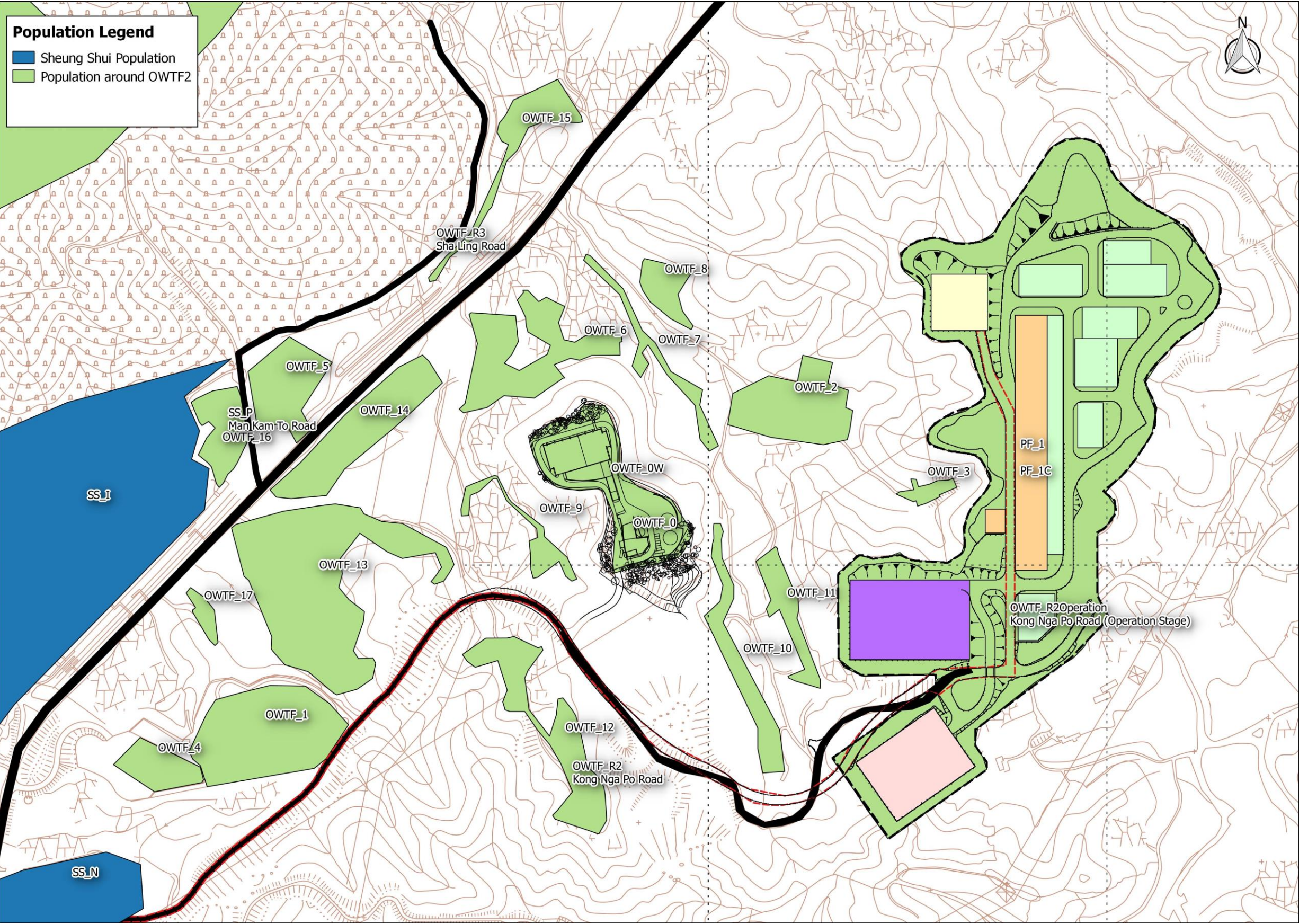
Appendix 11.6 Population Considered in this Assessment

11.6.1 Population Areas considered in this assessment



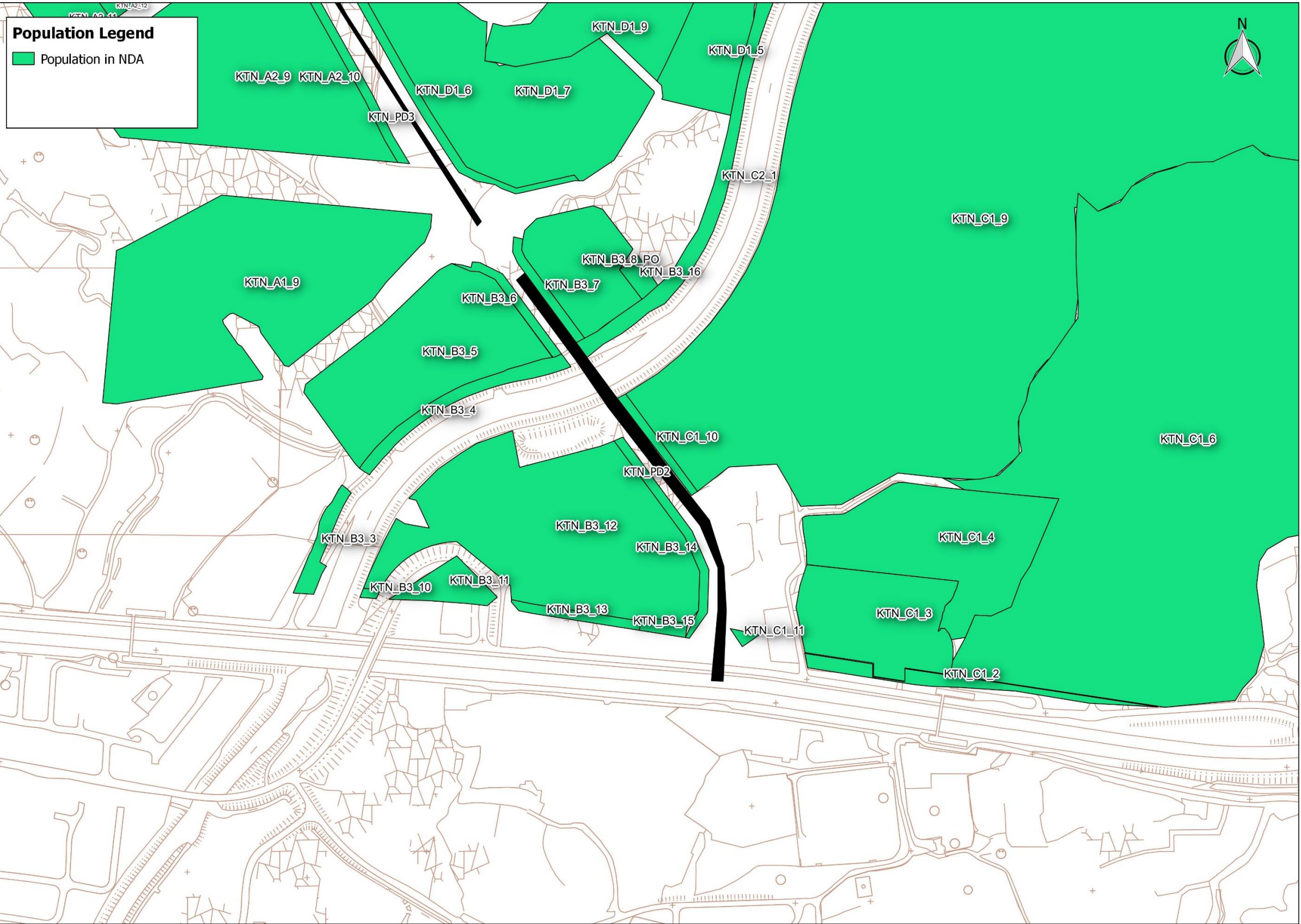


11.6.2 Population Areas considered in this assessment (around OWTF2)



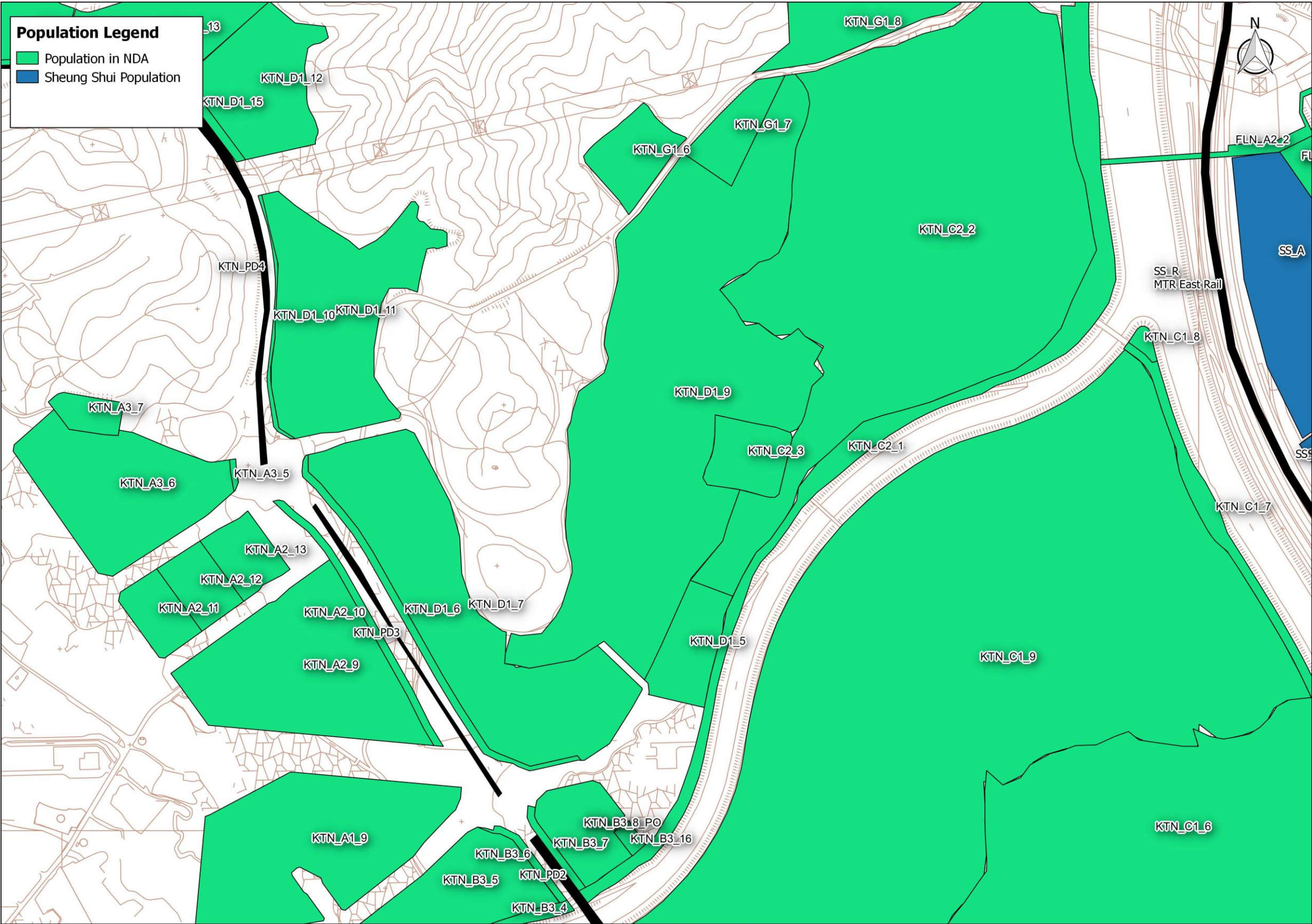


11.6.3 Population Areas considered in this assessment (around Ku Tung North(Southern Portion))





11.6.4 Population Areas considered in this assessment (Ku Tung North (Northern portion))





11.6.5 Population Areas considered in this assessment (Sheung Shui Town Centre)

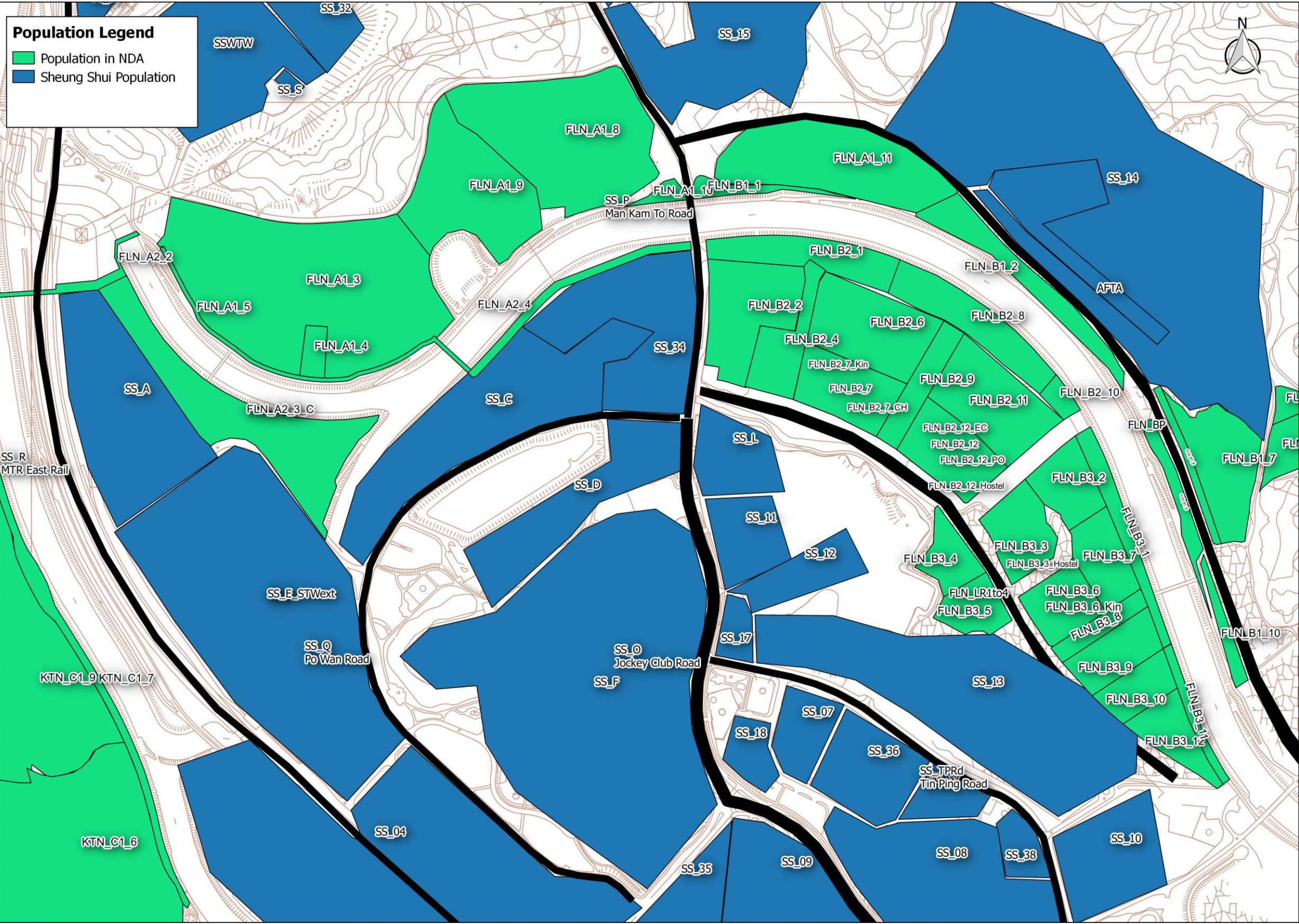




[illegible]



11.6.7 Population Areas considered in this assessment (Fanling North)





### 11.6.8 Summary of Population to be included in the HA

Ref.	Name	Population (Base Case)	Population (Construction Case)	Population (Operation Case)	Night	Jammed Peak	Peak Hour	Weekend Day	WorkingDay	Portion Indoor	Vulnerability	Building Height(m)	Remarks
AFSS	Approved Development Village Houses at Tsung Pak Long	0	0	7	1	0.5	0.5	0.7	0.5	0.99	Healthy	9	Approved development
AFTA	Approved Development Village Houses at Sheung Shui Wa Shan	24	24	24	1	0.5	0.5	0.7	0.5	0.99	Healthy	9	Approved development
FLN_A1_10	Amenity	7	7	7	0.02	0.2	0.2	1	0.2	0	Healthy	3	Riverside promenade area.
FLN_A1_11	Government Weapon Training Division	90	90	90	0	1	1	1	1	0.5	Healthy	15	Pending decision on future use
FLN_A1_3	Agricultural land	77	77	77	1	0.5	0.5	0.7	0.5	0.95	Healthy	6	Population estimated from site survey and the NDA plan.
FLN_A1_4	Man Ming Temple	3	3	3	0	0.2	0.2	1	0.7	0	Healthy	3	Site survey. A small temple.
FLN_A1_5	Amenity	45	45	45	0.02	0.2	0.2	1	0.2	0	Healthy	3	Riverside promenade area.
FLN_A1_8	Government Police Driving and Traffic Training Complex	375	375	375	0.03	1	1	0.03	1	0.2	Healthy	21	Adopted from NENT NDA EIA
FLN_A1_9	Agricultural land	44	44	44	1	0.5	0.5	0.7	0.5	0.95	Healthy	6	Based on site survey of similar agricultural land
FLN_A2_2	Amenity	27	27	27	0.02	0.2	0.2	1	0.2	0	Healthy	3	Riverside promenade area.
FLN_A2_3	Sewage Plant Extension	20	0	20	0.17	0.5	0.5	0.17	1	0.95	Healthy	3	Estimated population by the Design Engineer.
FLN_A2_4	Amenity	31	31	31	0.02	0.2	0.2	1	0.2	0	Healthy	3	Riverside promenade area.
FLN_B1_1	Open Space	10	10	10	0.02	0.2	0.2	1	0.2	0	Healthy	3	Riverside promenade area.
FLN_B1_10	Open Space	24	24	24	0.04	0.4	0.4	1	0.4	0	Healthy	3	Riverside promenade area.
FLN_B1_2	Open Space	29	29	29	0.02	0.2	0.2	1	0.2	0	Healthy	3	Riverside promenade area.
FLN_B1_5	Open Space	34	34	34	0.04	0.4	0.4	1	0.4	0	Healthy	3	Riverside promenade area.
FLN_B1_6	Amenity	34	34	32	0.04	0.4	0.4	1	0.4	0	Healthy	3	Assume 0.01 person/m2.
FLN_B1_7	Residential Zone 2	2079	1039	2079	1	0.5	0.5	0.7	0.5	0.99	Healthy	39	NDA plan
FLN_B1_8	Residential Zone 4	24	24	24	1	0.5	0.5	0.7	0.5	0.99	Healthy	9	NDA plan. Village Resite
FLN_B1_9	Residential Zone 3	435	217	435	1	0.5	0.5	0.7	0.5	0.99	Healthy	31	NDA plan.
FLN_B2_1	Open Space	130	130	130	0.04	0.4	0.4	1	0.4	0	Healthy	3	Riverside promenade area.
FLN_B2_10	Open Space	23	23	23	0.04	0.4	0.4	1	0.4	0	Healthy	3	Riverside promenade area.
FLN_B2_11	Public Rental Housing	4294	2417	4294	1	0.5	0.5	0.7	0.5	0.99	Healthy	70	NDA plan.
FLN_B2_12	Public Rental Housing	0	0	3727	1	0.5	0.5	0.7	0.5	0.99	Healthy	94	NDA plan.
FLN_B2_12_EC	Day Care Centre for the Elderly	53	53	53	1	1	1	1	1	1	Vulnerable	3	NDA plan - Day Care Centre for the Elderly.
FLN_B2_12_Hostel	Hostel for Severely Disabled Persons	59	59	59	1	1	1	1	1	1	Vulnerable	3	NDA plan - Hostel for Severely Disabled Persons.  Capacity = 50 (from G/IC Assessment)  Assume no. of staff = 9 (1 home manager, 2 ancillary workers, 3 Care workers, 1 nurse and 2 Health workers) based on info from Legislative Council Bills Committee on Residential Care Homes (Persons with Disabilities) Bill  LC Paper No. CB(2)80/10-11(01) dated 27 September 2010
FLN_B2_12_PO	Post Office	6	6	6	0.02	0.2	0.2	0.05	1	0.95	Healthy	3	NDA plan - Post office
FLN_B2_2	Public Transport Depot and Potential RCP	203	203	203	0.02	0.2	0.2	0.05	1	0.98	Healthy	20	Estimated 200 employees working in PTD and 3 employees working in RCP.
FLN_B2_4	Government Reserve	0	0	0	0	0	0	0	0	0	Healthy	15	Government Reserve
FLN_B2_6	Public Rental Housing	4326	2163	4326	1	0.5	0.5	0.7	0.5	0.99	Healthy	70	NDA plan.
FLN_B2_7	Public Rental Housing	3941	1970	3941	1	0.5	0.5	0.7	0.5	0.99	Healthy	94	NDA plan.
FLN_B2_7_CH	Care and Attention Home for Severely Disabled Persons	60	60	60	1	1	1	1	1	1	Vulnerable	3	NDA plan -Care and Attention Home for Severely Disabled Persons.  Capacity = 50 (from G/IC Assessment)  Assume no. of staff = 10 (1 home manager, 2 ancillary workers, 4 Care workers, 1 nurse and 2 Health workers) based on info from Legislative Council Bills Committee on Residential Care Homes (Persons with Disabilities) Bill



Ref.	Name	Population (Base Case)	Population (Construction Case)	Population (Operation Case)	Night	Jammed Peak	Peak Hour	Weekend Day	WorkingDay	Portion Indoor	Vulnerability	Building Height(m)	Remarks
													LC Paper No. CB(2)80/10-11(01) dated 27 September 2010
FLN_B2_7_Kin	Kindergarten	226	226	226	0	0.5	0.5	0	1	0.99	Vulnerable	3	Population estimated from NDA plan.
FLN_B2_8	Open Space	159	159	159	0.04	0.4	0.4	1	0.4	0	Healthy	3	Playground. Assume 0.01 person/m2.
FLN_B2_9	Open Space	82	82	82	0.04	0.4	0.4	1	0.4	0	Healthy	3	Playground. Assume 0.01 person/m2.
FLN_B3_1	Open Space	49	49	49	0.04	0.4	0.4	1	0.4	0	Healthy	3	Riverside promenade area.
FLN_B3_10	Educational Secondary School	1301	650	1301	0	1	1	0	1	0.98	Healthy	24	
FLN_B3_11	Open Space	32	32	32	0.04	0.4	0.4	1	0.4	0	Healthy	3	Riverside promenade area.
FLN_B3_12	Educational Primary School	829	414	829	0	0.5	0.5	0	1	0.98	Vulnerable	36	Population estimated from NDA plan.
FLN_B3_2	Public Rental Housing	1939	969	1939	1	0.5	0.5	0.7	0.5	0.99	Healthy	70	NDA plan.
FLN_B3_3	Public Rental Housing	2985	1492	2985	1	0.5	0.5	0.7	0.5	0.99	Healthy	94	NDA plan.
FLN_B3_3_Hostel	Hostel for Moderately Mentally Handicapped Persons	54	54	54	1	1	1	1	1	1	Vulnerable	3	NDA plan - Hostel for Moderately Mentally Handicapped Persons
FLN_B3_4	Educational Primary School	829	414	829	0	0.5	0.5	0	1	0.98	Vulnerable	36	Population estimated from NDA plan.
FLN_B3_5	Educational Primary School	829	414	829	0	0.5	0.5	0	1	0.98	Vulnerable	36	Population estimated from NDA plan.
FLN_B3_6	Residential Zone 2 with Commercial	1173	586	1173	1	0.5	0.5	0.7	0.5	0.99	Healthy	97	NDA plan.
FLN_B3_6_Kin	Kindergarten	226	226	226	0	0.5	0.5	0	1	0.99	Vulnerable	3	Population estimated from NDA plan for kindergartens:
FLN_B3_7	Residential Zone 2	1171	585	1171	1	0.5	0.5	0.7	0.5	0.99	Healthy	55	NDA plan.
FLN_B3_8	Open Space	50	50	50	0.04	0.4	0.4	1	0.4	0	Healthy	3	Assume 0.01 person/m2.
FLN_B3_9	Residential Zone 2	1183	591	1183	1	0.5	0.5	0.7	0.5	0.99	Healthy	55	NDA plan.
KTN_A1_9	Residential Zone 1 (with Commercial)	5715	2857	5715	1	0.5	0.5	0.7	0.5	0.99	Healthy	97	NDA plan.
KTN_A2_10	Amenity	39	39	39	0.04	0.4	0.4	1	0.4	0	Healthy	3	Assume 0.01 person/m2.
KTN_A2_11	Educational Primary School	833	416	833	0	0.5	0.5	0	1	0.98	Vulnerable	36	Population estimated from NDA plan.
KTN_A2_12	Educational Primary School	833	416	833	0	0.5	0.5	0	1	0.98	Vulnerable	36	Population estimated from NDA plan.
KTN_A2_13	Educational Secondary School	1287	643	1287	0	0.5	0.5	0	1	0.98	Healthy	36	Population estimated from NDA plan.
KTN_A2_9	Residential Zone 1 (with Commercial)	5150	2575	5150	1	0.5	0.5	0.7	0.5	0.99	Healthy	97	NDA plan.
KTN_A3_5	Amenity	3	3	3	0.04	0.4	0.4	1	0.4	0	Healthy	3	Assume 0.01 person/m2.
KTN_A3_6	Residential Zone 2	3917	1958	3917	1	0.5	0.5	0.7	0.5	0.99	Healthy	55	NDA plan.
KTN_A3_7	Rural Residential Zone 4	52	26	52	1	0.5	0.5	0.7	0.5	0.99	Healthy	6	NDA plan.
KTN_B3_10	Amenity	2	2	2	0.04	0.4	0.4	1	0.4	0	Healthy	3	Assume 0.01 person/m2.
KTN_B3_11	Amenity	44	44	44	0.04	0.4	0.4	1	0.4	0	Healthy	3	Assume 0.01 person/m2.
KTN_B3_12	Commercial Research and Development	4177	2088	4177	0.02	0.2	0.2	0.05	1	0.98	Healthy	31	NDA planned for a low density business park development to  provide employment and economic opportunities for the NDA capitalising  on the NDA??s proximity to the Mainland as well as to the LMC Loop.
KTN_B3_13	Amenity	14	14	14	0.04	0.4	0.4	1	0.4	0	Healthy	3	Assume 0.01 person/m2.
KTN_B3_14	Amenity	24	24	24	0.04	0.4	0.4	1	0.4	0	Healthy	3	Assume 0.01 person/m2.
KTN_B3_15	Petrol Filling Station	19	19	19	0.4	1	1	0.7	0.5	0.2	Healthy	10	Population estimated from NDA plan.
KTN_B3_16	Visitor Center	210	210	210	0	1	1	1	1	0.5	Healthy	10	Long Valley Core Area, Area for Wetland Enhancement Works and Area for Facilities Supporting the Nature Park.
KTN_B3_3	Open Space	16	16	16	0.04	0.4	0.4	1	0.4	0	Healthy	3	Riverside promenade area.
KTN_B3_4	Open Space	33	33	33	0.04	0.4	0.4	1	0.4	0	Healthy	3	Riverside promenade area.
KTN_B3_5	Commercial Research and Development	2534	1267	2534	0.02	0.2	0.2	0.05	1	0.98	Healthy	31	NDA planned for a low density business park development to
KTN_B3_6	Amenity	15	15	15	0.04	0.4	0.4	1	0.4	0	Healthy	3	Assume 0.01 person/m2.
KTN_B3_7	Amenity	13	13	13	0.04	0.4	0.4	1	0.4	0	Healthy	3	Assume 0.01 person/m2.
KTN_B3_8	Hotel and Conference Facilities	1117	558	1117	1	0.5	0.5	0.7	0.5	0.99	Healthy	31	Population estimated from NDA plan.



Ref.	Name	Population (Base Case)	Population (Construction Case)	Population (Operation Case)	Night	Jammed Peak	Peak Hour	Weekend Day	WorkingDay	Portion Indoor	Vulnerability	Building Height(m)	Remarks
KTN_B3_8_PO	Post Office	6	6	6	0.02	0.2	0.2	0.05	1	0.95	Healthy	3	NDA plan - Post office
KTN_C1_10	Amenity	13	13	13	0.04	0.4	0.4	1	0.4	0	Healthy	3	Assume 0.01 person/m2.
KTN_C1_11	Vegetable Market and Credit Co operative Society	600	600	600	0.02	0.7	0.7	1	0.7	0.95	Healthy	3	Assume no. of member = 200 (claimed by Arup);
KTN_C1_2	Earth God Shrine of Kam Tsin Tsuen	33	33	33	0.04	0.4	0.4	1	0.4	0	Healthy	3	Assume 0.01 person/m2.
KTN_C1_3	Comprehensive Development Area	141	70	141	1	0.5	0.5	0.7	0.5	0.99	Healthy	8	NDA plan. Enchi Lodge and Earth God Shrine of Kam Tsin Tsuen.
KTN_C1_4	Village Type Development	435	217	435	1	0.5	0.5	0.7	0.5	0.99	Healthy	9	NDA plan. Yin Kong Tsuen (Village)
KTN_C1_6	Long Valley	40	40	40	1	0.5	0.5	0.7	0.5	0.95	Healthy	6	Population estimated from site survey and the NDA plan.
KTN_C1_7	Open Space	54	54	54	0.02	0.2	0.2	1	0.2	0	Healthy	3	Riverside promenade area.
KTN_C1_8	Open Space	5	5	5	0.02	0.2	0.2	1	0.2	0	Healthy	3	Riverside promenade area.
KTN_C1_9	Nature Park	90	90	90	0	1	1	1	1	0	Healthy	3	Long Valley Core Area, Area for Wetland Enhancement Works and Area for Facilities Supporting the Nature Park.
KTN_C2_1	Open Space	113	113	113	0.02	0.2	0.2	1	0.2	0	Healthy	3	Riverside promenade area.
KTN_C2_2	Long Valley	30	30	30	1	0.5	0.5	0.7	0.5	0.95	Healthy	6	Population estimated from site survey and the NDA plan.
KTN_C2_3	Disused village school	5	5	5	0	0.5	0.5	1	0.5	0	Healthy	3	Disused village school, currently a temporary car park; Pkg 2
KTN_C2_6	Open Space	3	3	3	0.02	0.2	0.2	1	0.2	0	Healthy	3	Riverside promenade area.
KTN_D1_10	Amenity	17	17	17	0.04	0.4	0.4	1	0.4	0	Healthy	3	Assume 0.01 person/m2.
KTN_D1_11	Residential Zone 2	5005	2502	5005	1	0.5	0.5	0.7	0.5	0.99	Healthy	28	NDA plan.
KTN_D1_12	Potential Activity Centre	180	0	180	0	0.5	0.5	0.7	0.5	0.5	Healthy	6	Population estimated from community sports website.
KTN_D1_13	Potential Activity Centre	40	0	40	0	0.5	0.5	0.7	0.5	0.5	Healthy	2	Population estimated from community sports website.
KTN_D1_14	Government Reserve	0	0	0	1	1	1	1	1	0	Healthy	1	Government Reserve
KTN_D1_15	Amenity	22	22	22	0.04	0.4	0.4	1	0.4	0	Healthy	3	Assume 0.01 person/m2.
KTN_D1_5	Residential Zone 4	119	119	119	1	0.5	0.5	0.7	0.5	0.99	Healthy	9	NDA plan. Village Resite
KTN_D1_6	Amenity	56	56	56	0.04	0.4	0.4	1	0.4	0	Healthy	3	Assume 0.01 person/m2.
KTN_D1_7	Residential Zone 2	7098	3549	7098	1	0.5	0.5	0.7	0.5	0.99	Healthy	72	NDA plan.
KTN_D1_9	Village Type Development	2326	2326	2326	1	0.5	0.5	0.7	0.5	0.99	Healthy	9	NDA plan. Ho Sheung Heung, Hau Ku Shek Ancestral Hall, Hung Shing Temple & Pai Fung Temple and Sin Wai Nunnery.
KTN_G1_6	Lo Wu Saddle Club Site 1	20	20	20	0.05	0.5	0.5	1	0.7	0	Healthy	1	Hlaf of original Lo Wu Saddle Club
KTN_G1_7	Lo Wu Saddle Club Site 2	20	20	20	0.05	0.5	0.5	1	0.5	0	Healthy	1	Hlaf of original Lo Wu Saddle Club
KTN_G1_8	Lo Wu Correctional Institution	2039	2039	2039	0	0	0	0	0	0	Healthy	12	The redeveloped LWCI will contain a maximum of 1400 inmates, 554 staff and 85 visitors, according to "Project Profile for Reuse of Treated Sewage Effluent from Redeveloped Lo Wu Correctional Institution, 2008"
OWTF_0	Organic Waste Treatment Facility (Visitor)	40	40	40	0	1	1	1	1	0.9	Healthy	6	Visitor to OWTF2
OWTF_OW	Organic Waste Treatment Facility (Staff)	50	50	50	1	1	1	1	1	0.5	Healthy	6	Staff of OWTF2, conservative estimate (not counted in OWTF2 risk calculation)
OWTF_1	Police Dog Unit and Force Search Unit Training School	134	134	134	0.1	1	1	1	1	0.99	Healthy	6	Adopted from OWTF2 EIA report
OWTF_10	Area 5	104	83	104	1	0.7	0.7	0.7	0.5	0.9	Healthy	9	Based on OWTF2 EIA report (2017 population) with annual growth rate of 2.5%
OWTF_11	Area 6	87	70	87	1	0.7	0.7	0.7	0.5	0.9	Healthy	9	Based on OWTF2 EIA report (2017 population) with annual growth rate of 2.5%
OWTF_12	Area 7	278	223	278	1	0.7	0.7	0.7	0.5	0.9	Healthy	9	Based on OWTF2 EIA report (2017 population) with annual growth rate of 2.5%
OWTF_13	Area 8	591	473	591	1	0.7	0.7	0.7	0.5	0.9	Healthy	9	Based on OWTF2 EIA report (2017 population) with annual growth rate of 2.5%
OWTF_14	Area 9	148	118	148	1	0.7	0.7	0.7	0.5	0.9	Healthy	9	Based on OWTF2 EIA report (2017 population) with annual growth rate of 2.5%



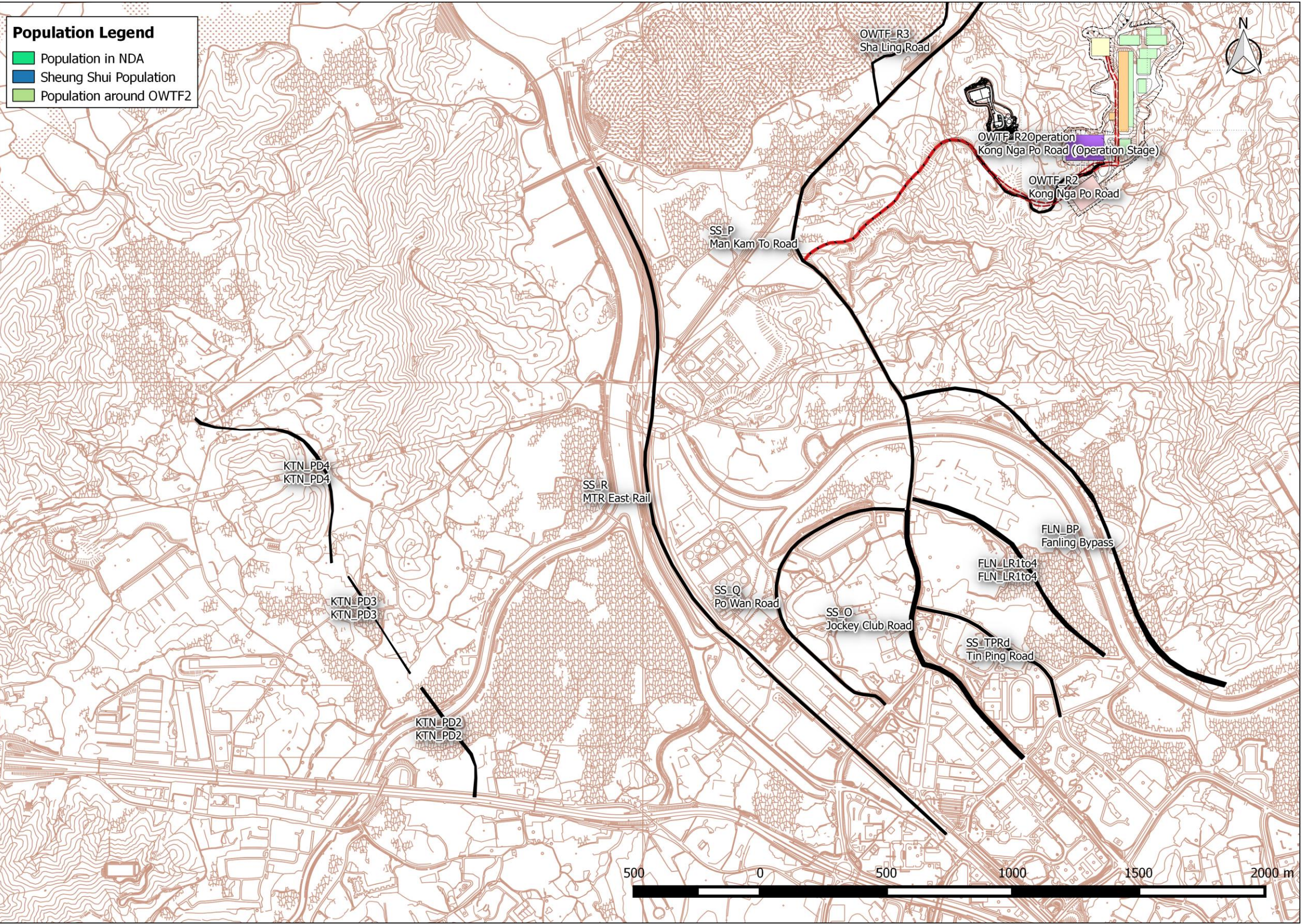
Ref.	Name	Population (Base Case)	Population (Construction Case)	Population (Operation Case)	Night	Jammed Peak	Peak Hour	Weekend Day	WorkingDay	Portion Indoor	Vulnerability	Building Height(m)	Remarks
OWTF_15	Area 10	165	132	165	1	0.7	0.7	0.7	0.5	0.9	Healthy	9	Based on OWTF2 EIA report (2017 population) with annual growth rate of 2.5%
OWTF_16	Area 11	348	278	348	1	0.7	0.7	0.7	0.5	0.9	Healthy	9	Based on OWTF2 EIA report (2017 population) with annual growth rate of 2.5%
OWTF_17	Area 12	217	174	217	1	0.7	0.7	0.7	0.5	0.9	Healthy	9	Adopted from OWTF2 EIA report
OWTF_2	San Uk Ling Holding Centre	35	35	35	0.1	1	1	1	0.5	0.99	Healthy	9	Adopted from OWTF2 EIA report
OWTF_3	San Uk Ling Firing Range	20	20	20	0	1	1	1	0.5	0	Healthy	1	Adopted from OWTF2 EIA report
OWTF_4	Hong Kong Police Force Border District Headquarters	200	200	200	0.5	1	1	1	0.5	0.99	Healthy	3	Adopted from OWTF2 EIA report
OWTF_5	Cement Plant	20	20	20	0.1	0.1	0.1	1	0.5	0	Healthy	3	Adopted from OWTF2 EIA report
OWTF_6	Area 1	400	320	400	1	0.7	0.7	0.7	0.5	0.9	Healthy	9	Based on OWTF2 EIA report (2017 population) with annual growth rate of 2.5%
OWTF_7	Area 2	78	63	78	1	0.7	0.7	0.7	0.5	0.9	Healthy	9	Based on OWTF2 EIA report (2017 population) with annual growth rate of 2.5%
OWTF_8	Area 3	104	83	104	1	0.7	0.7	0.7	0.5	0.9	Healthy	9	Based on OWTF2 EIA report (2017 population) with annual growth rate of 2.5%
OWTF_9	Area 4	87	70	87	1	0.7	0.7	0.7	0.5	0.9	Healthy	9	Based on OWTF2 EIA report (2017 population) with annual growth rate of 2.5%
PF_1	Proposed Police Facility (This Project)	1	0	500	0.1	1	1	1	1	0.5	Healthy	3	Information from HKPF
PF_1C	Proposed Police Facility (Construction Phase)	1	400	0	0	1	1	0.1	1	0.5	Healthy	3	400 construction workers are assumed during construction phase
PRH_CYR	Public Rental Housing at Choi Yuen Road	2800	2800	2800	1	0.5	0.5	0.7	0.5	0.99	Healthy	81	Approved development
SS_04	Bus Depot & Industrial Area	7123	7123	7123	0.02	0.2	0.2	0.05	1	0.98	Healthy	15	Population adopted from the Reassessment Study
SS_05	Choi Po Court	5638	5638	5638	1	0.5	0.5	0.7	0.5	0.99	Healthy	99	2006 by-census
SS_06	Tai Tau Leng Village	896	812	896	1	0.5	0.5	0.7	0.5	0.99	Healthy	9	About 60 village houses (700 sq ft) identified from Centamap. Assume 3 storeys and 4 ppl per storey.
SS_07	Industrial Training Center	1170	1170	1170	0	0.5	0.5	0	1	1	Healthy	21	Population adopted from the Reassessment Study
SS_08	North District Sports Ground	864	864	864	0	0.5	0.5	0.7	0.5	0.5	Healthy	12	Population adopted from the Reassessment Study
SS_09	Shek Wu Hui Residential Buildings & Offices	6086	6086	6086	0.95	0.5	0.5	0.65	0.5	0.95	Healthy	15	2006 by-census. Estimate average 5 storeys.
SS_10	Woodland Crest	0	0	1816	1	0.5	0.5	0.7	0.5	0.99	Healthy	27	2006 by-census
SS_11	2 Fung Kai Secondary Schools	1131	1131	1131	0	0.5	0.5	0	1	0.98	Healthy	9	Estimation from public info on internet
SS_12	2 Fung Kai Primary Schools	1379	1379	1379	0	0.5	0.5	0	1	0.98	Vulnerable	9	Estimation from public info on internet
SS_13	Tin Ping Shan Tsuen	2240	2030	2240	1	0.5	0.5	0.7	0.5	0.99	Healthy	9	About 150 village houses (700 sq ft) identified from Centamap. Assume 3 storeys and 4 ppl per storey.
SS_14	Sheung Shui Wa Shan (Village)	896	812	896	1	0.5	0.5	0.7	0.5	0.99	Healthy	15	60 village houses
SS_15	Hung Kiu San Tsuen	406	448	448	1	0.5	0.5	0.7	0.5	0.99	Healthy	9	About 30 village houses identified from Centamap
SS_17	Fung Kai Kindergarden	452	452	452	0	0.5	0.5	0	1	0.98	Vulnerable	6	Estimation from public info on internet
SS_18	Fung Kai Liu Man Shek Tong Secondary School	1188	1188	1188	0	0.5	0.5	0	1	0.98	Healthy	27	Estimation from public info on internet
SS_19	Shek Wu Hui Public Primary School	0	0	829	0	0.5	0.5	0	1	0.98	Vulnerable	21	Estimation from public info on internet
SS_21	Shenzhen	20000	20000	20000	0.5	0.9	0.9	1	0.5	0.9	Healthy	30	Estimated population in area of Shenzhen within 1 km of Lo Wu station
SS_22	Lo Wu Station	8000	8000	8000	0.2	1	1	1	0.5	0.9	Healthy	6	Assume population equivalent to 2 crush-loaded trains + staff of immigration department.
SS_31	Ponds	5	5	5	1	0.5	0.5	0.7	0.5	0.95	Healthy	3	Site survey
SS_32	Open Storage and Vehicle Repairing	15	15	15	0	0.5	0.5	0	1	0	Healthy	3	Site survey
SS_33	Open Storage and Vehicle Repairing	25	25	25	0	0.5	0.5	0	1	0	Healthy	3	Site survey
SS_34	Open Storage and Vehicle Repairing	30	30	30	0	0.5	0.5	0	1	0	Healthy	3	Site survey
SS_35	Shek Wu Hui Playground	100	100	100	0.04	0.4	0.4	1	0.4	0	Healthy	3	Site survey
SS_36	Tsui Lai Garden	6515	6515	6515	1	0.5	0.5	0.7	0.5	0.99	Healthy	87	2006 by-census



Ref.	Name	Population (Base Case)	Population (Construction Case)	Population (Operation Case)	Night	Jammed Peak	Peak Hour	Weekend Day	WorkingDay	Portion Indoor	Vulnerability	Building Height(m)	Remarks
SS_37	Fung Kai Care and Attention Home for the Elderly	354	354	354	1	1	1	1	1	1	Vulnerable	21	Estimation from public info on internet
SS_38	Lee Chi Tat Memorial School Primary	1038	1038	1038	0	0.5	0.5	0	1	0.98	Vulnerable	21	Estimation from public info on internet
SS_39	Tsung Pak Long	1045	947	1045	1	0.5	0.5	0.7	0.5	0.99	Healthy	9	About 70 village houses (700 sq ft) identified from Centamap. Assume 3 storeys and 4 ppl per storey.
SS_40	Liu Pok Village	448	406	448	1	0.5	0.5	0.7	0.5	0.99	Healthy	9	About 30 village houses (700 sq ft) identified from Centamap. Assume 3 storeys and 4 ppl per storey.
SS_A	Abattoir	278	278	278	1	0.65	0.65	0.65	0.65	0.95	Healthy	12	Population adopted from the Reassessment Study
SS_C	Agriculture Land	10	10	10	1	0.5	0.5	0.7	0.5	0.95	Healthy	6	Site survey
SS_D	Man Kok Village	672	609	672	1	0.5	0.5	0.7	0.5	0.99	Healthy	9	About 45 village houses (700 sq ft) identified from Centamap. Assume 3 storeys and 4 ppl per storey.
SS_E	Existing Sewage Treatment Works Operation phase	66	66	66	0.17	0.5	0.5	0.17	1	0.95	Healthy	9	Population adopted from the Reassessment Study
SS_E_STWext	Existing Sewage Treatment Works Construction phase	0	40	0	0	1	1	0	1	0	Healthy	1	Population adopted from the Resassessment Study
SS_F	Sheung Shui Village	0	0	5973	1	0.5	0.5	0.7	0.5	0.99	Healthy	9	About 400 village houses (700 sq ft) identified from Centamap. Assume 3 storeys and 4 ppl per storey.
SS_H	Houses Squatters and Ponds	150	150	150	1	0.5	0.5	0.7	0.5	0.95	Healthy	3	Site survey
SS_I	Agricultural Land	150	150	290	1	0.5	0.5	0.7	0.5	0.95	Healthy	6	Population adopted from the Reassessment Study
SS_K	Lo Wu Staff Quarters	0	0	84	1	0.5	0.5	0.7	0.5	0.99	Healthy	12	Population adopted from the Reassessment Study
SS_L	Government Office & Quarantine	129	129	129	0.02	0.2	0.2	0.05	1	0.95	Healthy	18	Population adopted from the Reassessment Study
SS_N	Open Storage and Vehicle Repairing	60	60	60	0	0.5	0.5	0	1	0	Healthy	3	Site survey
SS_S	WTW Staff Quarters	0	0	40	1	0.5	0.5	0.7	0.5	0.99	Healthy	3	Population adopted from the Reassessment Study



11.6.9 Transient Population considered in this study





#### 11.6.10 Summary of Transient Population

Population ID	Population Name	Base Case Population	Construction Case Population	Operation Case Population	Working Day	Weekend Day	Night	Peak	Jammed Peak	Remarks
FLN_BP	FLN Bypass	336	0	336	0.15	0.15	0.07	0.25	1	Year 2023 and 2032: Estimation from the NDA development traffic forecast (NDA development scenario).
FLN_LR1to4	FLN LR1 to LR4	36	0	52	0.15	0.15	0.07	0.25	1	Year 2023 and 2032: Estimation from the NDA development traffic forecast (NDA development scenario).
KTN_PD2	KTN PD2	356	0	356	0.15	0.15	0.07	0.25	1	NDA development traffic forecast (NDA development scenario).
KTN_PD3	KTN PD3	240	0	240	0.15	0.15	0.07	0.25	1	NDA development traffic forecast (NDA development scenario).
KTN_PD4	KTN PD4	136	0	136	0.15	0.15	0.07	0.25	1	NDA development traffic forecast (NDA development scenario).
OWTF_R2	Kong Nga Po Road	560	560	0	0.15	0.15	0.07	0.25	1	Adopted from OWTF2 EIA report (plus extra 40 construction workers added during construction phase)
OWTF_R2Operation	Kong Nga Po Road in Operation Stage	0	0	616	0.15	0.15	0.07	0.25	1	extra 50% compared with OWTF2 EIA report in operation phase for uncertainty
OWTF_R3	Sha Ling Road	194	194	200	0.15	0.15	0.07	0.25	1	Adopted from OWTF2 EIA report, extra 50% in operation phase for uncertainty
SS_O	Jockey Club Road	324	296	324	0.15	0.15	0.07	0.25	1	Estimation from the NDA development traffic forecast (NDA development scenario).
SS_P	Man Kam To Road	696	552	752	0.15	0.15	0.07	0.25	1	Estimation from the NDA development traffic forecast (NDA development scenario).
SS_Q	Po Wan Road	27	31	27	0.61	0.61	0.26	1	1	Estimation from the NDA development traffic forecast (NDA development scenario).
SS_R	MTR East Rail	3809	3809	3809	0.5	0.5	0.2	1	1	Population adopted from the Reassessment Study (crush-loaded train)
SS_TPRd	Tin Ping Road	132	84	132	0.15	0.15	0.07	0.25	1	Estimation from the NDA development traffic forecast (NDA development scenario).