

KEY PLAN
SCALE 1:50000

- LEGEND:
- - - PROPOSED KONG NGA PO DEVELOPMENT AREA
 - - - PROPOSED DWTF2 PROJECT BOUNDARY
 - - - 500m ASSESSMENT AREA
 - PIG FARM
 - X AIR SENSITIVE RECEIVER

Rev	Date	Drawn	Description	Ch'kd	App'd
P4	JUL 16	MING	GENERAL REVISION	NN	JFP
P3	MAR 16	MING	GENERAL REVISION	NN	JFP
P2	DEC 15	MING	GENERAL REVISION	NN	JFP
P1	OCT 15	MING	FIRST ISSUE	NN	JFP

20/F AIA Kowloon Tower
Landmark East
100 How Ming Street
Kwun Tong, Kowloon
Hong Kong
☎ +852 2828 5757
☎ +852 2827 1823
www.mottmac.com.hk

Client

**CIVIL ENGINEERING
AND DEVELOPMENT
DEPARTMENT**

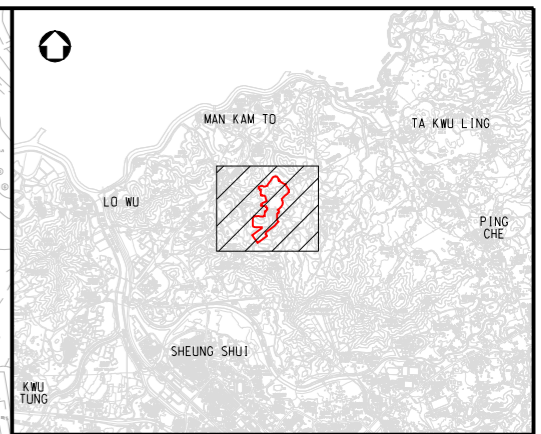
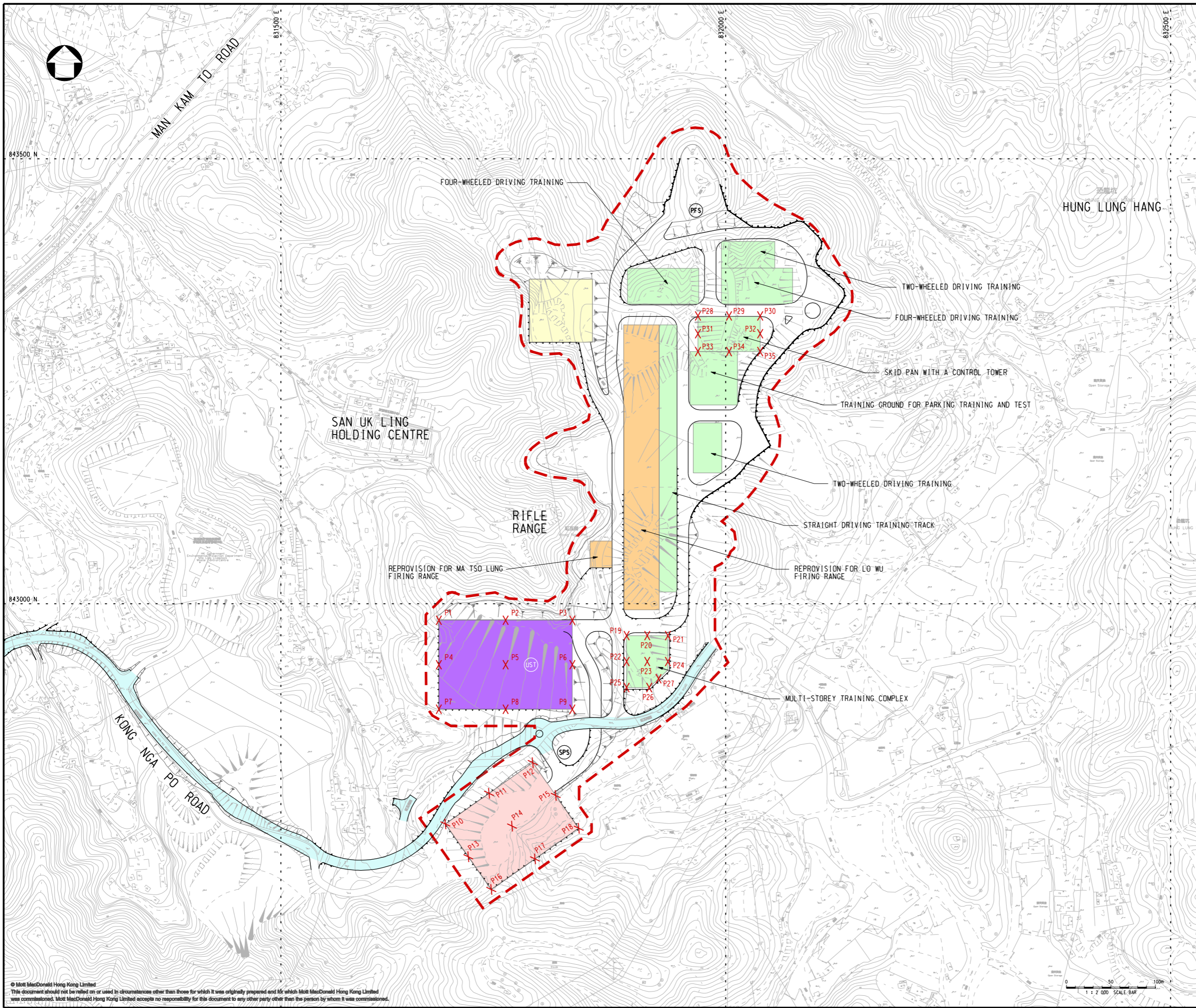
Project
**AGREEMENT NO. CE31 / 2014(CE)
ENGINEERING STUDY FOR POLICE
FACILITIES IN KONG NGA PO -
FEASIBILITY STUDY**

Title
**LOCATION OF AIR SENSITIVE RECEIVERS
OUTSIDE PROJECT SITE**

Designed	NN	Eng check	EC
Drawn	MING	Coordination	EC
Dwg check	NN	Approved	JFP
Scale at A1	1:5000	Status	PRE
Drawing Number			Rev P4

FIGURE 3.1

© Mott MacDonald Hong Kong Limited
This document should not be relied on or used in circumstances other than those for which it was originally prepared and for which Mott MacDonald Hong Kong Limited was commissioned. Mott MacDonald Hong Kong Limited accepts no responsibility for this document to any other party other than the person by whom it was commissioned.



KEY PLAN
SCALE 1:50000

- LEGEND:**
- PROPOSED KONG NGA PO DEVELOPMENT AREA
 - POLICE DRIVING AND TRAFFIC TRAINING FACILITIES
 - FIRING RANGE
 - HELIPAD
 - PROPOSED POLICE TRAINING FACILITY
 - WEAPONS TRAINING FACILITIES
 - PROPOSED KONG NGA PO ROAD IMPROVEMENT WORKS
 - SPS SEWAGE PUMPING STATION
 - PFS PETROL / DIESEL FILLING STATION
 - UST UNDERGROUND STORMWATER STORAGE TANK
 - X PROPOSED ASRS WITHIN THE DEVELOPMENT AREA

Rev	Date	Drawn	Description	Ch'kd	App'd
P5	JUL 16	MING	GENERAL REVISION	NN	JFP
P4	MAY 16	MING	GENERAL REVISION	NN	JFP
P3	MAR 16	MING	GENERAL REVISION	NN	JFP
P2	DEC 15	MING	GENERAL REVISION	NN	JFP
P1	OCT 15	MING	FIRST ISSUE	NN	JFP

Mott MacDonald

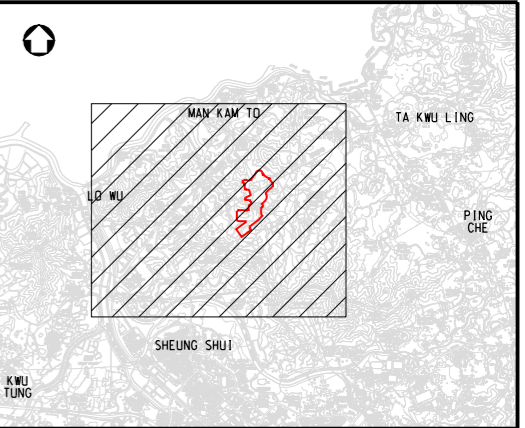
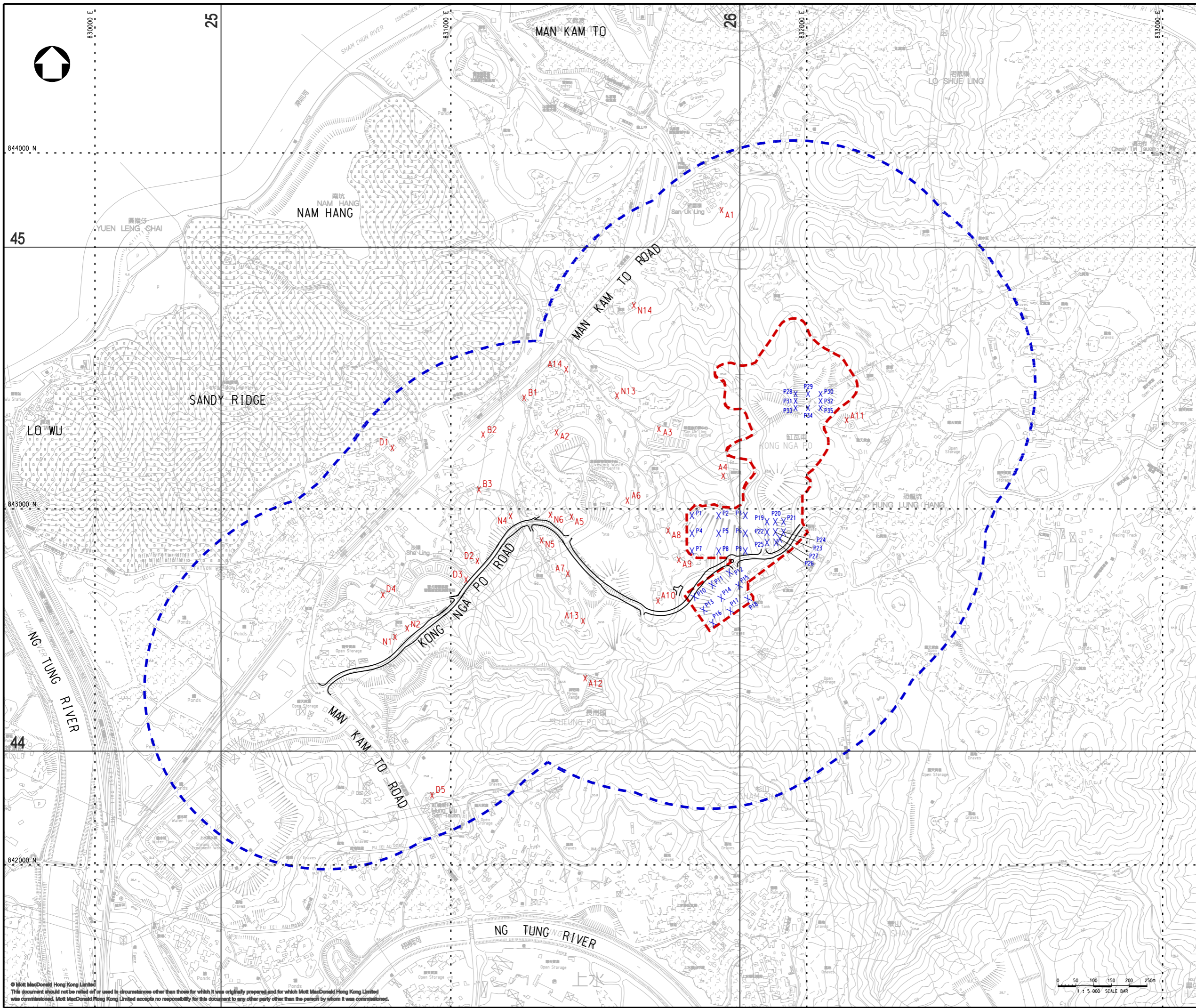
20/F AIA Kowloon Tower
Landmark East
100 How Ming Street
Kwun Tong, Kowloon
Hong Kong
☎ +852 2828 5757
☎ +852 2827 1823
www.mottmac.com.hk

CEDD CIVIL ENGINEERING AND DEVELOPMENT DEPARTMENT

Project
AGREEMENT NO. CE31 / 2014(CE)
ENGINEERING STUDY FOR POLICE FACILITIES IN KONG NGA PO - FEASIBILITY STUDY

Title
LOCATION OF AIR SENSITIVE RECEIVERS WITHIN PROJECT SITE

Designed	NN	Eng check	EC
Drawn	MING	Coordination	EC
Dwg check	NN	Approved	JFP
Scale at A1	1:2000	Status	PRE
Rev			P5
Drawing Number	FIGURE 3.2		



KEY PLAN
SCALE 1:50000

- LEGEND:
- - - PROPOSED KONG NGA PO DEVELOPMENT AREA
 - - - 500m ASSESSMENT AREA
 - X AIR SENSITIVE RECEIVER
 - X PROPOSED ASRs WITHIN THE DEVELOPMENT AREA

Rev	Date	Drawn	Description	Ch'k'd	App'd
P4	JUL 16	MING	GENERAL REVISION	HC	JFP
P3	MAR 16	MING	GENERAL REVISION	HC	JFP
P2	DEC 15	MING	GENERAL REVISION	HC	JFP
P1	OCT 15	MING	FIRST ISSUE	HC	JFP

20/F AIA Kowloon Tower
Landmark East
100 How Ming Street
Kwun Tong, Kowloon
Hong Kong
☎ +852 2828 5757
☎ +862 2827 1823
www.mottmac.com.hk

Client

CIVIL ENGINEERING
AND DEVELOPMENT
DEPARTMENT

Project
**AGREEMENT NO. CE31 / 2014(CE)
ENGINEERING STUDY FOR POLICE
FACILITIES IN KONG NGA PO -
FEASIBILITY STUDY**

Title
**RELEVANT ASRs LOCATED AT
RELEVANT PATH GRIDS**

Designed	HC	Eng check	EC
Drawn	MING	Coordination	EC
Dwg check	HC	Approved	JFP
Scale at A1 1:5000	Status PRE	Rev P4	
Drawing Number	FIGURE 3.3		