

KEY PLAN
SCALE 1:50000

- LEGEND:
- - - PROPOSED KONG NGA PO DEVELOPMENT AREA
 - - - 500m ASSESSMENT AREA
 - EIAO-TM CRITERIA (500 $\mu\text{g}/\text{m}^3$)

Rev	Date	Drawn	Description	Ch'k'd	App'd
P6	JUL 16	MING	GENERAL REVISION	NN	JFP
P5	JUN 16	MING	GENERAL REVISION	NN	JFP
P4	MAY 16	MING	GENERAL REVISION	NN	JFP
P3	MAR 16	MING	GENERAL REVISION	NN	JFP
P2	DEC 15	MING	GENERAL REVISION	NN	JFP
P1	OCT 15	MING	FIRST ISSUE	NN	JFP

20/F AIA Kowloon Tower
Landmark East
100 How Ming Street
Kwun Tong, Kowloon
Hong Kong
☎ +852 2828 5757
☎ +852 2827 1823
www.mottmac.com.hk

Client

CIVIL ENGINEERING
AND DEVELOPMENT
DEPARTMENT

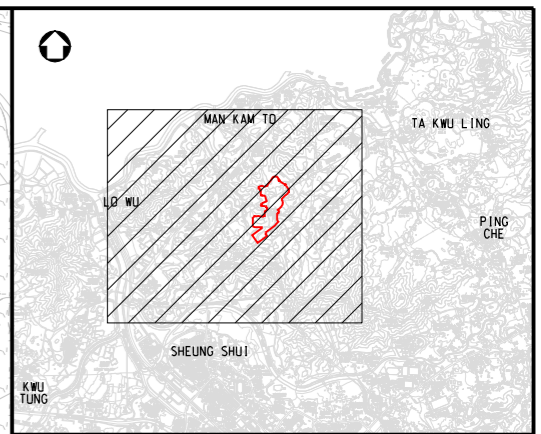
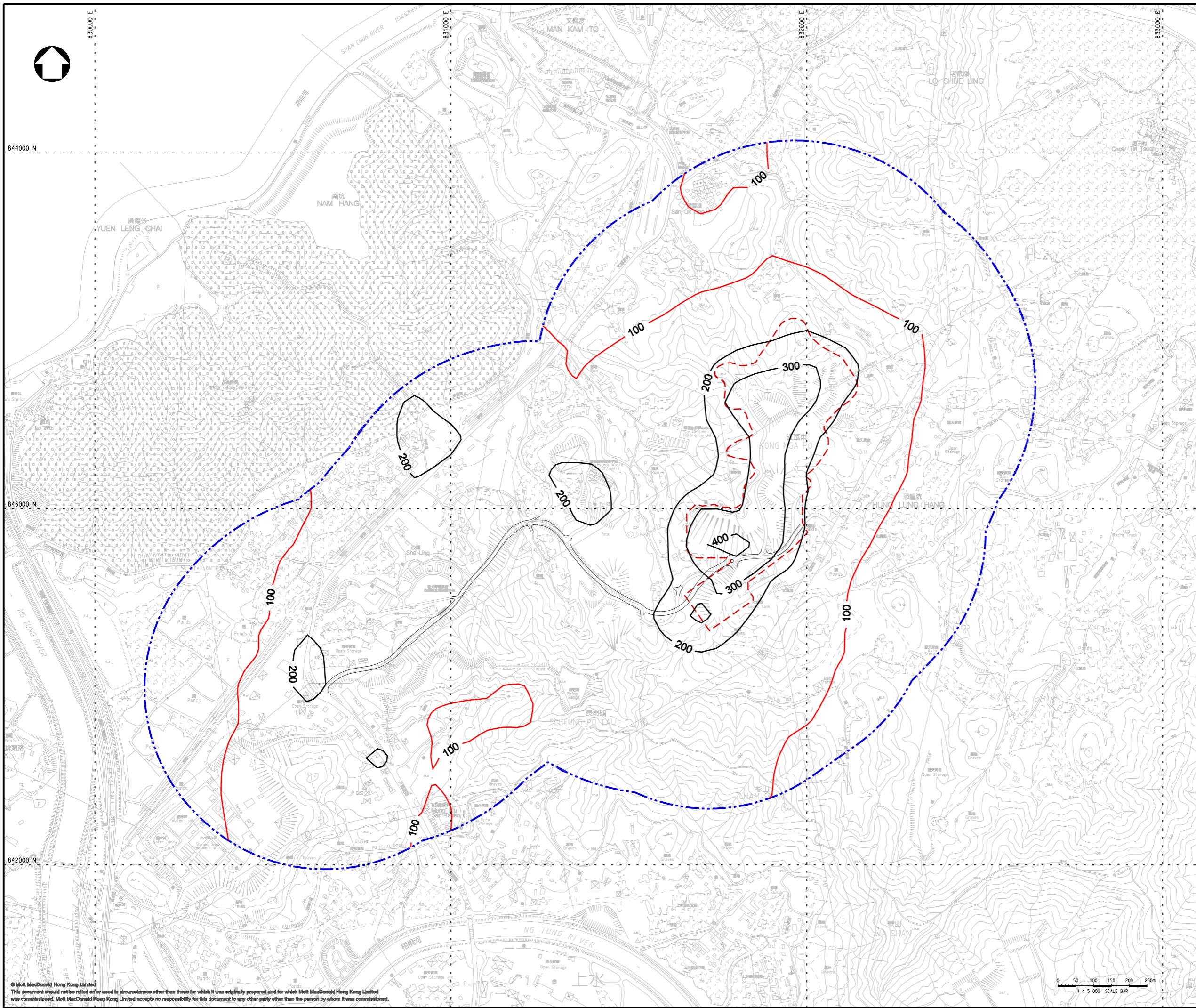
Project
**AGREEMENT NO. CE31 / 2014(CE)
ENGINEERING STUDY FOR POLICE
FACILITIES IN KONG NGA PO -
FEASIBILITY STUDY**

Title
**CUMULATIVE RESULT - CONTOUR OF TIER 1
HOURLY TSP CONCENTRATION ($\mu\text{g}/\text{m}^3$)
AT 1.5m ABOVE GROUND DURING
CONSTRUCTION PHASE (UNMITIGATED)**

Designed	NN	Eng check	EC
Drawn	MING	Coordination	EC
Dwg check	NN	Approved	JFP
Scale at A1	1:5000	Status	PRE
Drawing Number		Rev	P6

FIGURE 3.14

© Mott MacDonald Hong Kong Limited
This document should not be relied on or used in circumstances other than those for which it was originally prepared and for which Mott MacDonald Hong Kong Limited was commissioned. Mott MacDonald Hong Kong Limited accepts no responsibility for this document to any other party other than the person by whom it was commissioned.



KEY PLAN
SCALE 1:50000

- LEGEND:
- - - PROPOSED KONG NGA PO DEVELOPMENT AREA
 - - - - - 500m ASSESSMENT AREA
 - AOD CRITERIA ($100\mu\text{g}/\text{m}^3$)

Rev	Date	Drawn	Description	Ch'kd	App'd
P6	JUL 16	MING	GENERAL REVISION	NN	JFP
P5	JUN 16	MING	GENERAL REVISION	NN	JFP
P4	MAY 16	MING	GENERAL REVISION	NN	JFP
P3	MAR 16	MING	GENERAL REVISION	NN	JFP
P2	DEC 15	MING	GENERAL REVISION	NN	JFP
P1	OCT 15	MING	FIRST ISSUE	NN	JFP

20/F AIA Kowloon Tower
Landmark East
100 How Ming Street
Kwun Tong, Kowloon
Hong Kong
☎ +852 2828 5757
☎ +852 2827 1823
www.mottmac.com.hk

Client

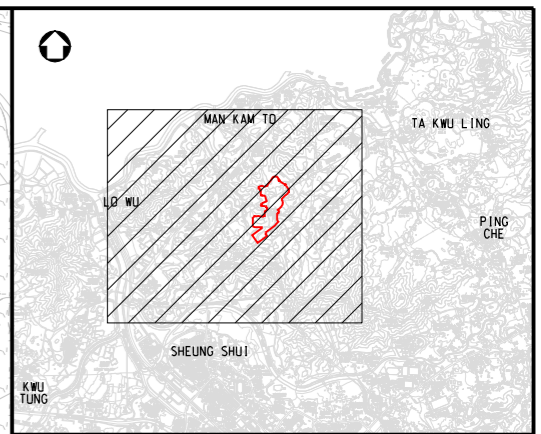
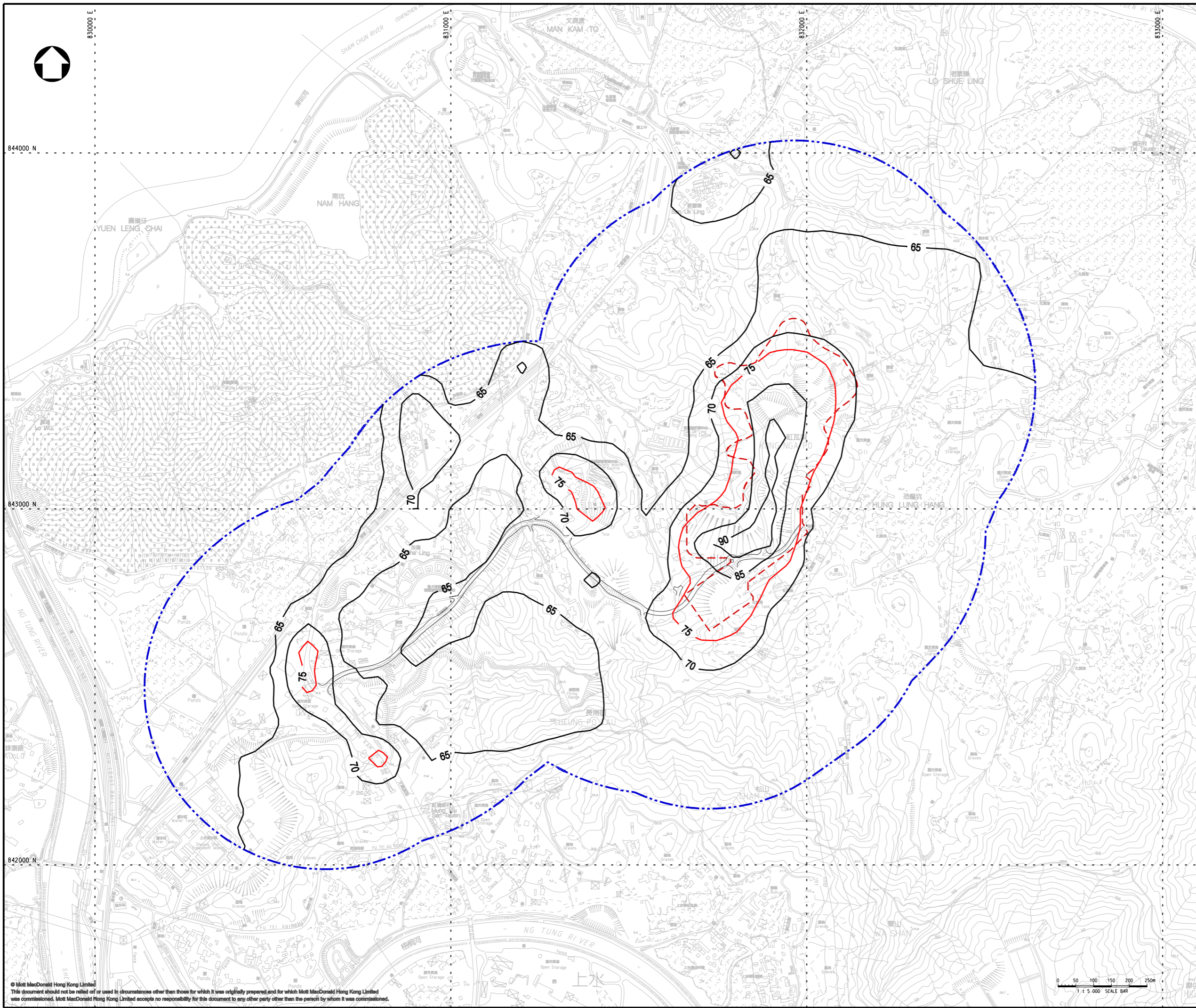
CIVIL ENGINEERING
AND DEVELOPMENT
DEPARTMENT

Project
**AGREEMENT NO. CE31 / 2014(CE)
ENGINEERING STUDY FOR POLICE
FACILITIES IN KONG NGA PO -
FEASIBILITY STUDY**

Title
**CUMULATIVE RESULT - CONTOUR OF TIER 1
10TH MAXIMUM DAILY RSP
CONCENTRATION ($\mu\text{g}/\text{m}^3$) AT 1.5m ABOVE
GROUND DURING CONSTRUCTION PHASE
(UNMITIGATED)**

Designed	NN	Eng check	EC
Drawn	MING	Coordination	EC
Dwg check	NN	Approved	JFP
Scale at A1	1:5000	Status	PRE
Rev	P6		

Drawing Number **FIGURE 3.15**



KEY PLAN
SCALE 1:50000

- LEGEND:
- - - PROPOSED KONG NGA PO DEVELOPMENT AREA
 - - - 500m ASSESSMENT AREA
 - AOD CRITERIA ($75\mu\text{g}/\text{m}^3$)

Rev	Date	Drawn	Description	Ch'kd	App'd
P6	JUL 16	MING	GENERAL REVISION	NN	JFP
P5	JUN 16	MING	GENERAL REVISION	NN	JFP
P4	MAY 16	MING	GENERAL REVISION	NN	JFP
P3	MAR 16	MING	GENERAL REVISION	NN	JFP
P2	DEC 15	MING	GENERAL REVISION	NN	JFP
P1	OCT 15	MING	FIRST ISSUE	NN	JFP

Mott MacDonald

20/F AIA Kowloon Tower
Landmark East
100 How Ming Street
Kwun Tong, Kowloon
Hong Kong
☎ +852 2828 5757
☎ +852 2827 1823
www.mottmac.com.hk

Client

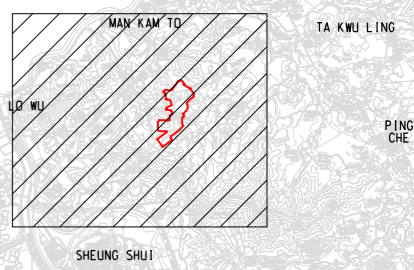
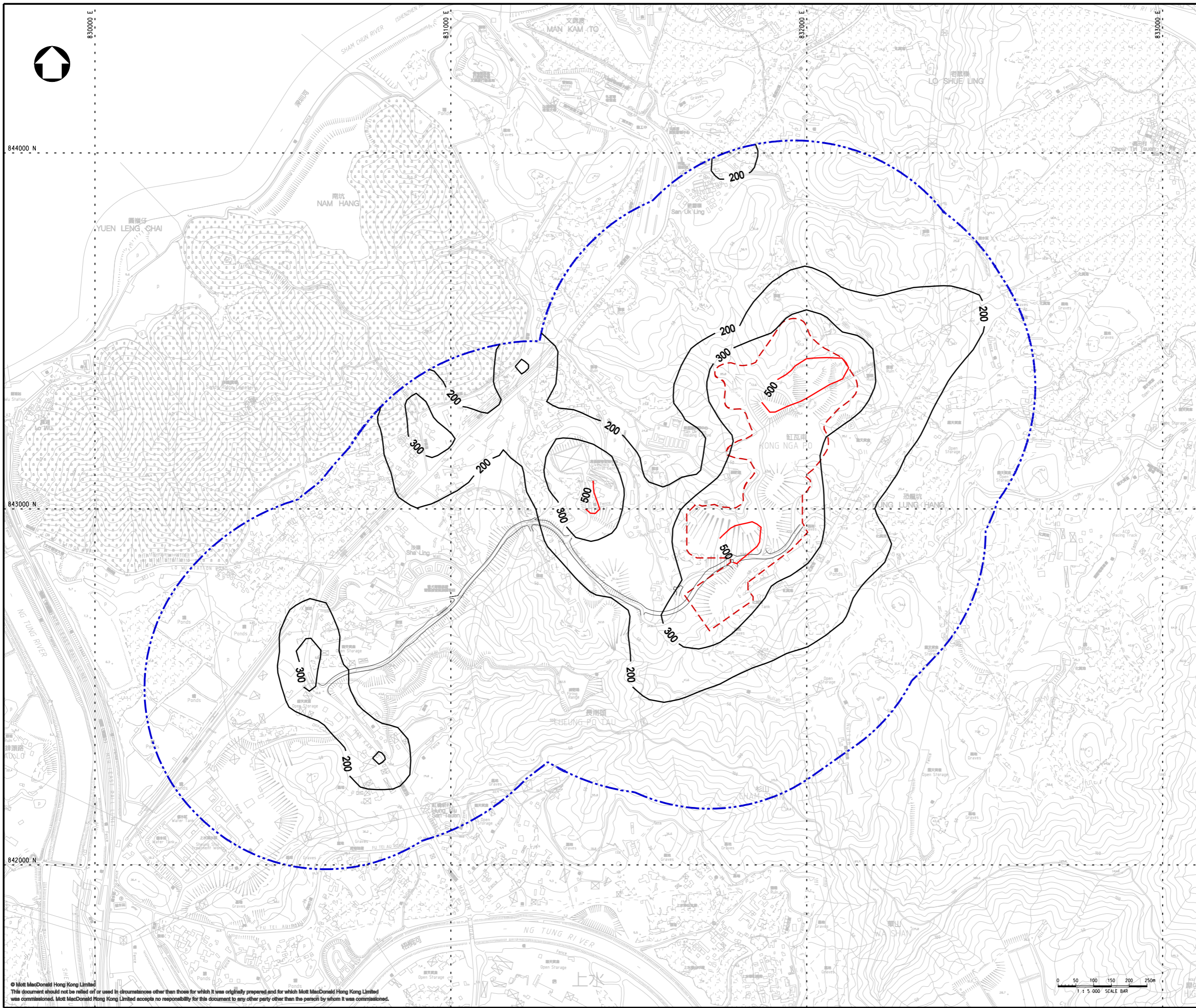
CEDD CIVIL ENGINEERING AND DEVELOPMENT DEPARTMENT

Project
**AGREEMENT NO. CE31 / 2014(CE)
ENGINEERING STUDY FOR POLICE
FACILITIES IN KONG NGA PO -
FEASIBILITY STUDY**

Title
**CUMULATIVE RESULT - CONTOUR OF TIER 1
10TH MAXIMUM DAILY FSP
CONCENTRATION ($\mu\text{g}/\text{m}^3$) AT 1.5m ABOVE
GROUND DURING CONSTRUCTION PHASE
(UNMITIGATED)**

Designed	NN	Eng check	EC
Drawn	MING	Coordination	EC
Dwg check	NN	Approved	JFP
Scale at A1	1:5000	Status	PRE
Drawing Number		Rev	P6

FIGURE 3.16



KEY PLAN
SCALE 1:50000


- LEGEND:**
- - - PROPOSED KONG NGA PO DEVELOPMENT AREA
 - - - - 500m ASSESSMENT AREA
 - EIAO-TM CRITERIA (500µg/m³)

Rev	Date	Drawn	Description	Ch'kd	App'd
P6	JUL 16	MING	GENERAL REVISION	NN	JFP
P5	JUN 16	MING	GENERAL REVISION	NN	JFP
P4	MAY 16	MING	GENERAL REVISION	NN	JFP
P3	MAR 16	MING	GENERAL REVISION	NN	JFP
P2	DEC 15	MING	GENERAL REVISION	NN	JFP
P1	OCT 15	MING	FIRST ISSUE	NN	JFP



20/F AIA Kowloon Tower
Landmark East
100 How Ming Street
Kwun Tong, Kowloon
Hong Kong
☎ +852 2828 5757
☎ +852 2827 1823
www.mottmac.com.hk

Client



CIVIL ENGINEERING AND DEVELOPMENT DEPARTMENT

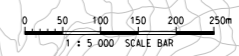
Project
AGREEMENT NO. CE31 / 2014(CE)
ENGINEERING STUDY FOR POLICE FACILITIES IN KONG NGA PO - FEASIBILITY STUDY

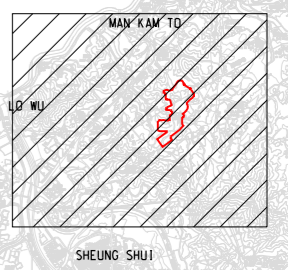
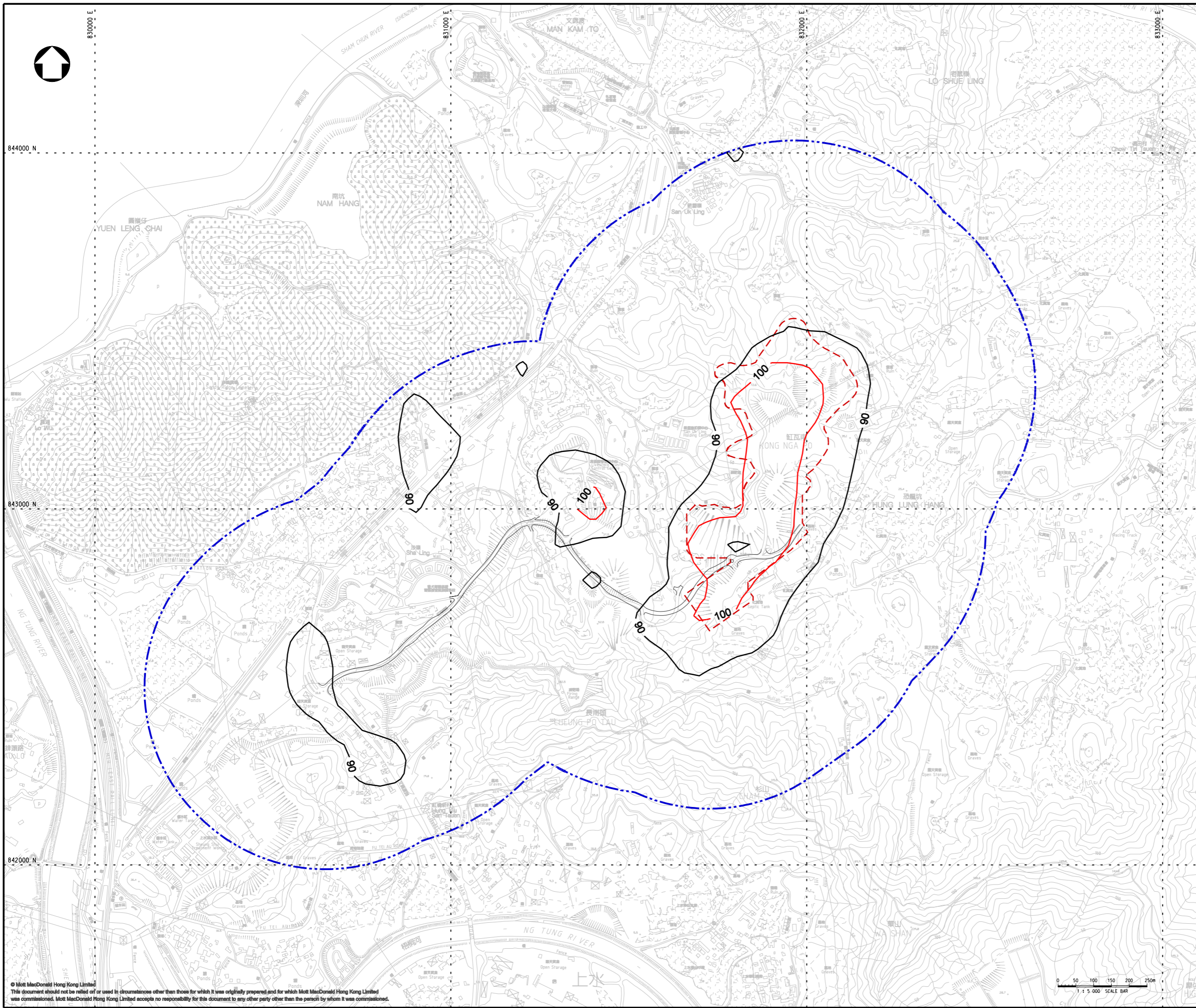
Title
CUMULATIVE RESULT - CONTOUR OF TIER 1 HOURLY TSP CONCENTRATION (µg/m³) AT 1.5m ABOVE GROUND DURING CONSTRUCTION PHASE (MITIGATED)

Designed	NN	Eng check	EC
Drawn	MING	Coordination	EC
Dwg check	NN	Approved	JFP
Scale at A1	1:5000	Status	PRE
Rev	P6		

Drawing Number
FIGURE 3.17

© Mott MacDonald Hong Kong Limited
This document should not be relied on or used in circumstances other than those for which it was originally prepared and for which Mott MacDonald Hong Kong Limited was commissioned. Mott MacDonald Hong Kong Limited accepts no responsibility for this document to any other party other than the person by whom it was commissioned.





KEY PLAN
SCALE 1:50000

- LEGEND:
- - - PROPOSED KONG NGA PO DEVELOPMENT AREA
 - - - 500m ASSESSMENT AREA
 - AOD CRITERIA ($100\mu\text{g}/\text{m}^3$)

Rev	Date	Drawn	Description	Ch'kd	App'd
P6	JUL 16	MING	GENERAL REVISION	NN	JFP
P5	JUN 16	MING	GENERAL REVISION	NN	JFP
P4	MAY 16	MING	GENERAL REVISION	NN	JFP
P3	MAR 16	MING	GENERAL REVISION	NN	JFP
P2	DEC 15	MING	GENERAL REVISION	NN	JFP
P1	OCT 15	MING	FIRST ISSUE	NN	JFP



20/F AIA Kowloon Tower
Landmark East
100 How Ming Street
Kwun Tong, Kowloon
Hong Kong
☎ +852 2828 5757
☎ +852 2827 1823
www.mottmac.com.hk

Client

**CIVIL ENGINEERING
AND DEVELOPMENT
DEPARTMENT**

Project
**AGREEMENT NO. CE31 / 2014(CE)
ENGINEERING STUDY FOR POLICE
FACILITIES IN KONG NGA PO -
FEASIBILITY STUDY**

Title
**CUMULATIVE RESULT - CONTOUR OF TIER 1
10TH MAXIMUM DAILY RSP
CONCENTRATION ($\mu\text{g}/\text{m}^3$) AT 1.5m ABOVE
GROUND DURING CONSTRUCTION PHASE
(MITIGATED)**

Designed	NN	Eng check	EC
Drawn	MING	Coordination	EC
Dwg check	NN	Approved	JFP
Scale at A1	1:5000	Status	PRE
Drawing Number		Rev	P6

FIGURE 3.18

© Mott MacDonald Hong Kong Limited
This document should not be relied on or used in circumstances other than those for which it was originally prepared and for which Mott MacDonald Hong Kong Limited was commissioned. Mott MacDonald Hong Kong Limited accepts no responsibility for this document to any other party other than the person by whom it was commissioned.