

KEY PLAN
SCALE 1:50000

- LEGEND:
- - - PROPOSED KONG NGA PO DEVELOPMENT AREA
 - · - · - 500m ASSESSMENT AREA
 - AOD CRITERIA ($200\mu\text{g}/\text{m}^3$)

Rev	Date	Drawn	Description	Ch'kd	App'd
P7	JUL 16	MING	GENERAL REVISION	NN	JFP
P6	JUL 16	MING	GENERAL REVISION	NN	JFP
P5	MAY 16	MING	GENERAL REVISION	NN	JFP
P4	MAR 16	MING	GENERAL REVISION	NN	JFP
P3	JAN 16	MING	GENERAL REVISION	NN	JFP
P2	DEC 15	MING	GENERAL REVISION	NN	JFP
P1	OCT 15	MING	FIRST ISSUE	NN	JFP

Mott MacDonald

20/F AIA Kowloon Tower
Landmark East
100 How Ming Street
Kwun Tong, Kowloon
Hong Kong
☎ +852 2828 5757
☎ +852 2827 1823
www.mottmac.com.hk

Client

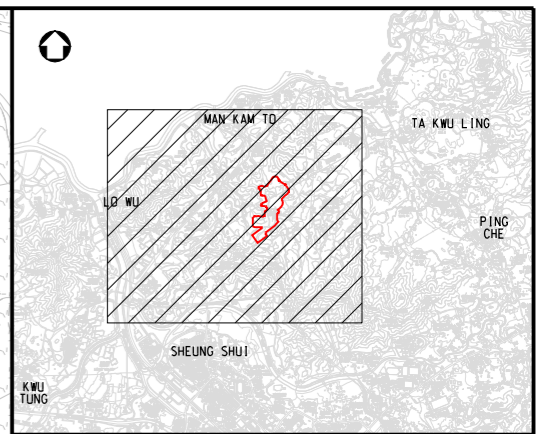
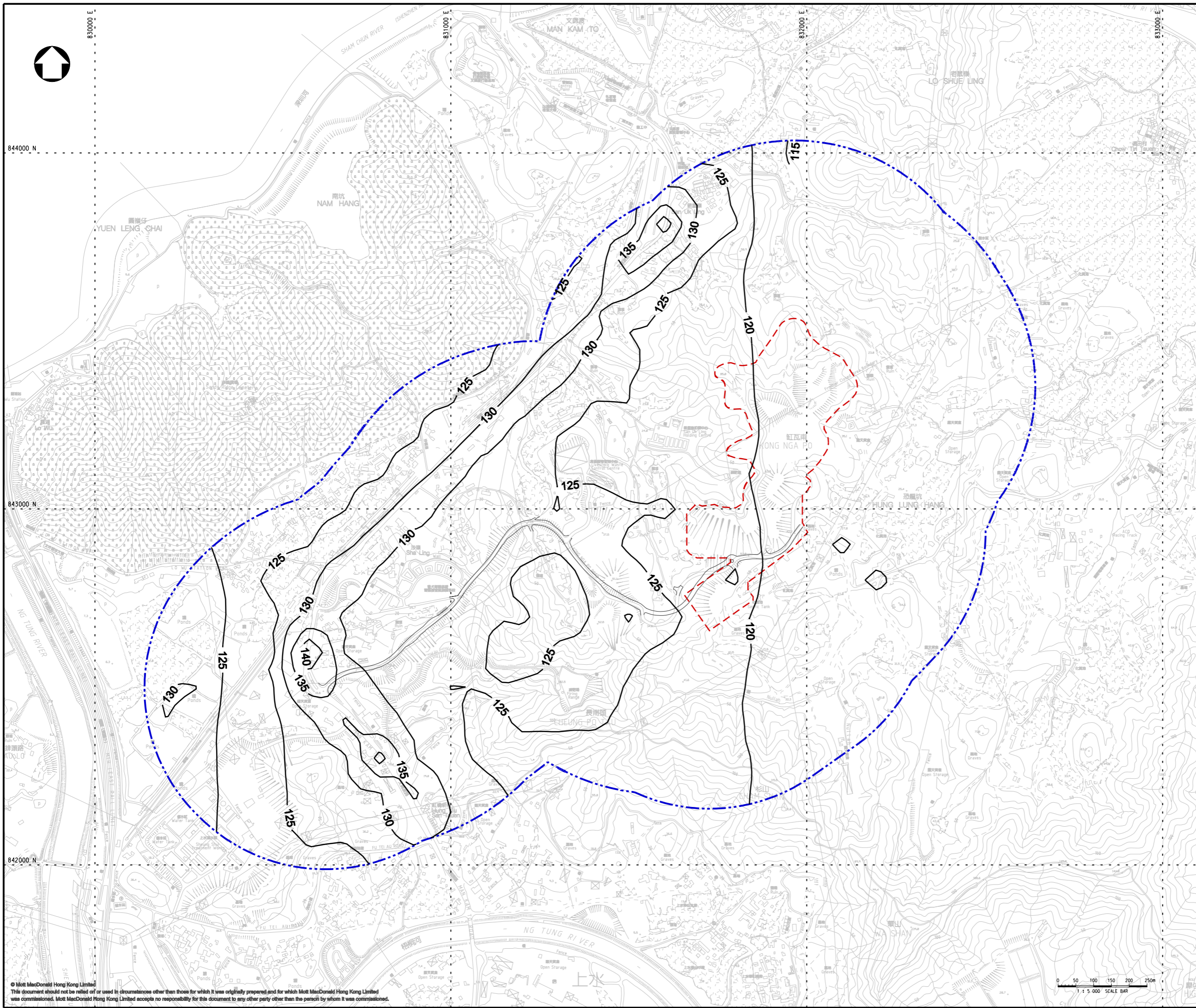
CEDD CIVIL ENGINEERING AND DEVELOPMENT DEPARTMENT

Project
**AGREEMENT NO. CE31 / 2014(CE)
ENGINEERING STUDY FOR POLICE
FACILITIES IN KONG NGA PO -
FEASIBILITY STUDY**

Title
**CUMULATIVE RESULT - CONTOUR OF 19TH
MAXIMUM HOURLY NO₂ CONCENTRATION
($\mu\text{g}/\text{m}^3$) AT 1.5m ABOVE GROUND DURING
OPERATIONAL PHASE (WITH CHP OF OWTF2)**

Designed	NN	Eng check	EC
Drawn	MING	Coordination	EC
Dwg check	NN	Approved	JFP
Scale at A1	1:5000	Status	PRE
Rev	P7		

Drawing Number **FIGURE 3.29**



KEY PLAN
SCALE 1:50000

- LEGEND:**
- - - PROPOSED KONG NGA PO DEVELOPMENT AREA
 - - - - 500m ASSESSMENT AREA
 - AOD CRITERIA ($200\mu\text{g}/\text{m}^3$)

Rev	Date	Drawn	Description	Ch'kd	App'd
P7	JUL 16	MING	GENERAL REVISION	NN	JFP
P6	JUL 16	MING	GENERAL REVISION	NN	JFP
P5	MAY 16	MING	GENERAL REVISION	NN	JFP
P4	MAR 16	MING	GENERAL REVISION	NN	JFP
P3	JAN 16	MING	GENERAL REVISION	NN	JFP
P2	DEC 15	MING	GENERAL REVISION	NN	JFP
P1	OCT 15	MING	FIRST ISSUE	NN	JFP

20/F AIA Kowloon Tower
Landmark East
100 How Ming Street
Kwun Tong, Kowloon
Hong Kong
☎ +852 2828 5757
☎ +862 2827 1823
www.mottmac.com.hk

Client

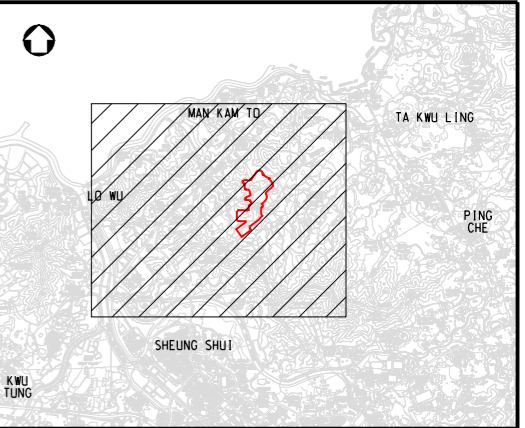
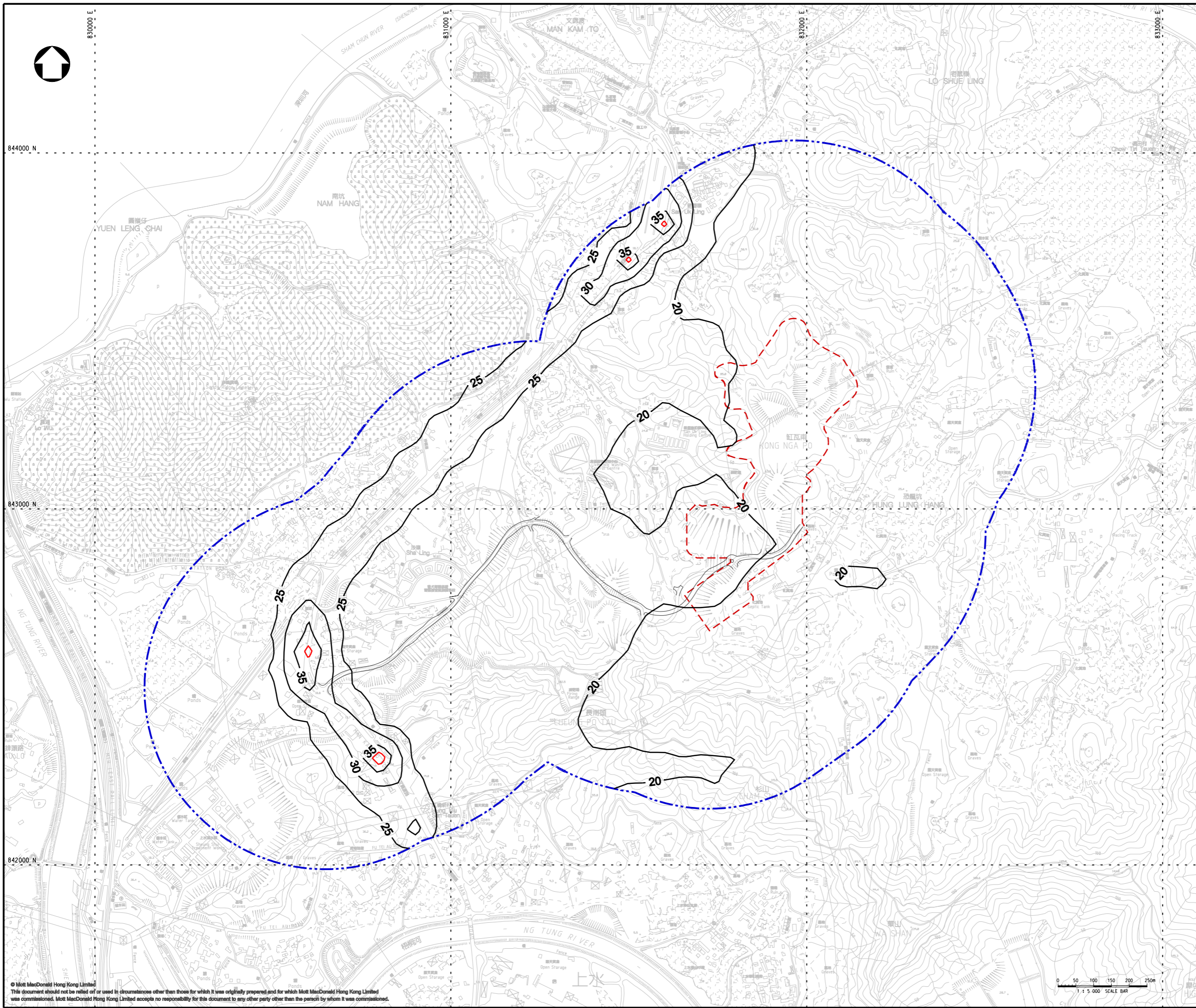
CIVIL ENGINEERING AND DEVELOPMENT DEPARTMENT

Project
**AGREEMENT NO. CE31 / 2014(CE)
ENGINEERING STUDY FOR POLICE FACILITIES IN KONG NGA PO -
FEASIBILITY STUDY**

Title
**CUMULATIVE RESULT - CONTOUR OF 19TH
MAXIMUM HOURLY NO₂ CONCENTRATION
($\mu\text{g}/\text{m}^3$) AT 1.5m ABOVE GROUND DURING
OPERATIONAL PHASE (WITH FLARE OF OWTF2)**

Designed	NN	Eng check	EC
Drawn	MING	Coordination	EC
Dwg check	NN	Approved	JFP
Scale at A1	1:5000	Status	PRE
Rev	P7		

Drawing Number **FIGURE 3.30**



KEY PLAN
SCALE 1:50000

- LEGEND:
- - - PROPOSED KONG NGA PO DEVELOPMENT AREA
 - - - - 500m ASSESSMENT AREA
 - AOD CRITERIA ($40\mu\text{g}/\text{m}^3$)

Rev	Date	Drawn	Description	Ch'kd	App'd
P7	JUL 16	MING	GENERAL REVISION	NN	JFP
P6	JUL 16	MING	GENERAL REVISION	NN	JFP
P5	MAY 16	MING	GENERAL REVISION	NN	JFP
P4	MAR 16	MING	GENERAL REVISION	NN	JFP
P3	JAN 16	MING	GENERAL REVISION	NN	JFP
P2	DEC 15	MING	GENERAL REVISION	NN	JFP
P1	OCT 15	MING	FIRST ISSUE	NN	JFP

20/F AIA Kowloon Tower
Landmark East
100 How Ming Street
Kwun Tong, Kowloon
Hong Kong
☎ +852 2828 5757
☎ +852 2827 1823
www.mottmac.com.hk

Client

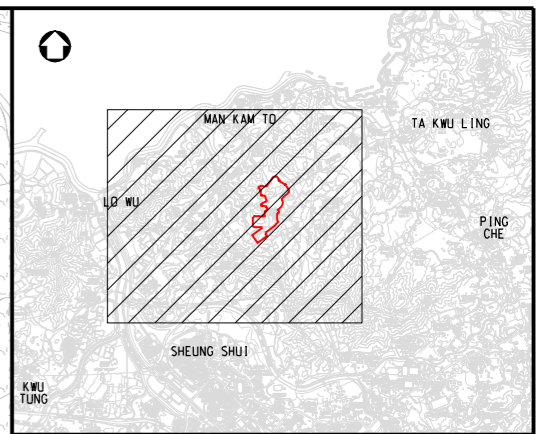
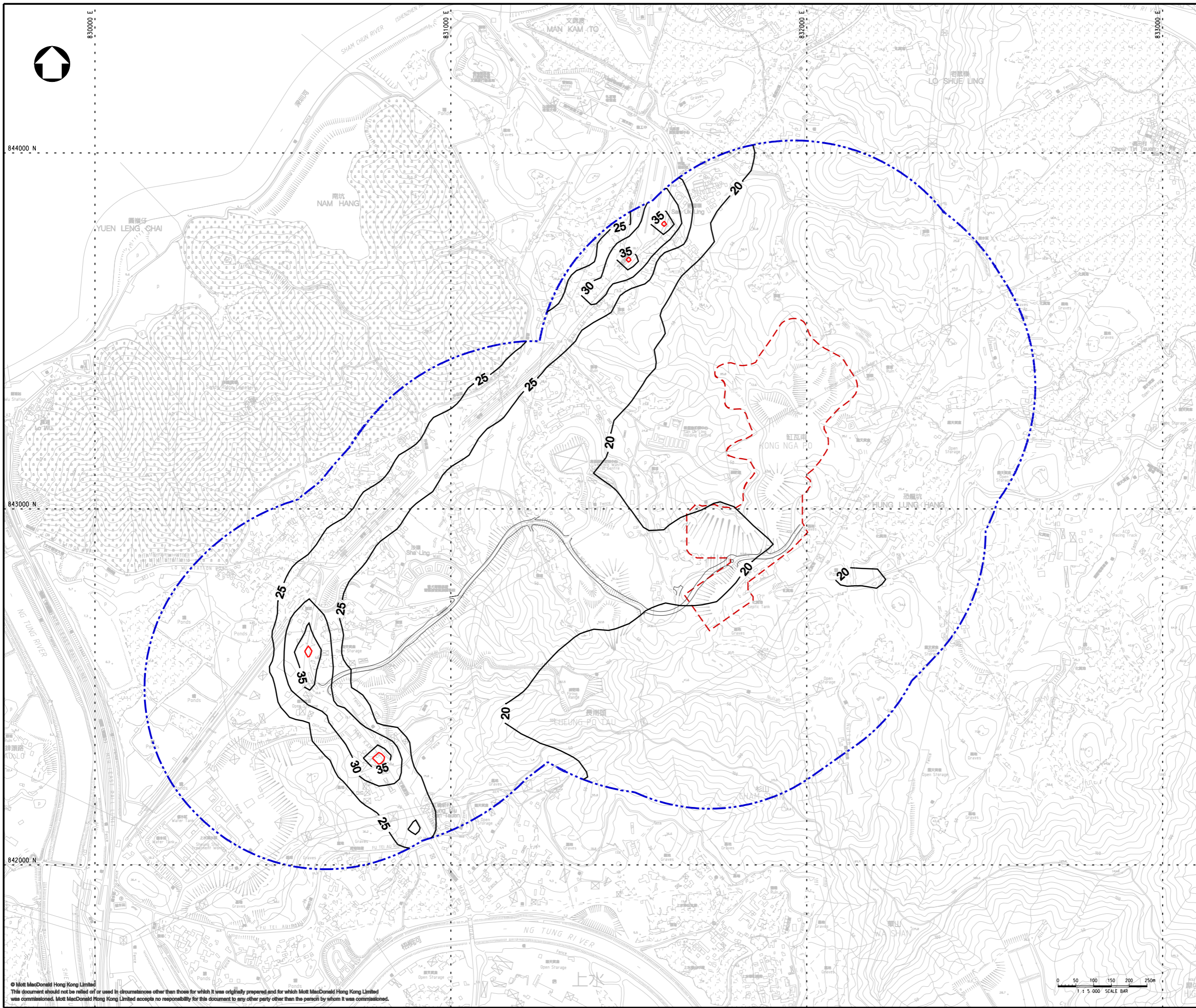
CIVIL ENGINEERING
AND DEVELOPMENT
DEPARTMENT

Project
**AGREEMENT NO. CE31 / 2014(CE)
ENGINEERING STUDY FOR POLICE
FACILITIES IN KONG NGA PO -
FEASIBILITY STUDY**

Title
**CUMULATIVE RESULT - CONTOUR OF
ANNUAL NO₂ CONCENTRATION ($\mu\text{g}/\text{m}^3$) AT
1.5m ABOVE GROUND DURING OPERATIONAL
PHASE (WITH CHP OF OWTF2)**

Designed	NN	Eng check	EC
Drawn	MING	Coordination	EC
Dwg check	NN	Approved	JFP
Scale at A1	1:5000	Status	PRE
Rev	P7		

Drawing Number **FIGURE 3.31**



KEY PLAN
SCALE 1:50000

- LEGEND:
- - - - PROPOSED KONG NGA PO DEVELOPMENT AREA
 - . - . - . 500m ASSESSMENT AREA
 - AOD CRITERIA (40 $\mu\text{g}/\text{m}^3$)

Rev	Date	Drawn	Description	Ch'kd	App'd
P7	JUL 16	MING	GENERAL REVISION	NN	JFP
P6	JUL 16	MING	GENERAL REVISION	NN	JFP
P5	MAY 16	MING	GENERAL REVISION	NN	JFP
P4	MAR 16	MING	GENERAL REVISION	NN	JFP
P3	JAN 16	MING	GENERAL REVISION	NN	JFP
P2	DEC 15	MING	GENERAL REVISION	NN	JFP
P1	OCT 15	MING	FIRST ISSUE	NN	JFP

Mott MacDonald

20/F AIA Kowloon Tower
Landmark East
100 How Ming Street
Kwun Tong, Kowloon
Hong Kong
☎ +852 2828 5757
☎ +852 2827 1823
www.mottmac.com.hk

Client

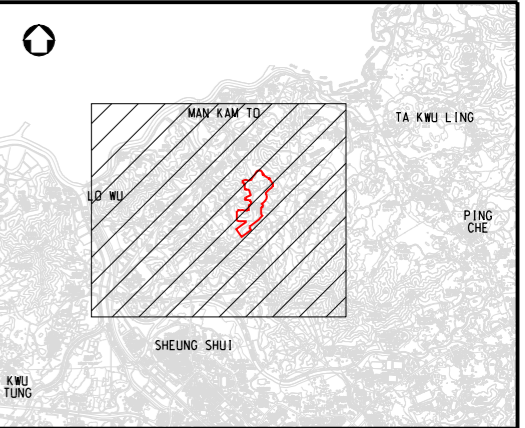
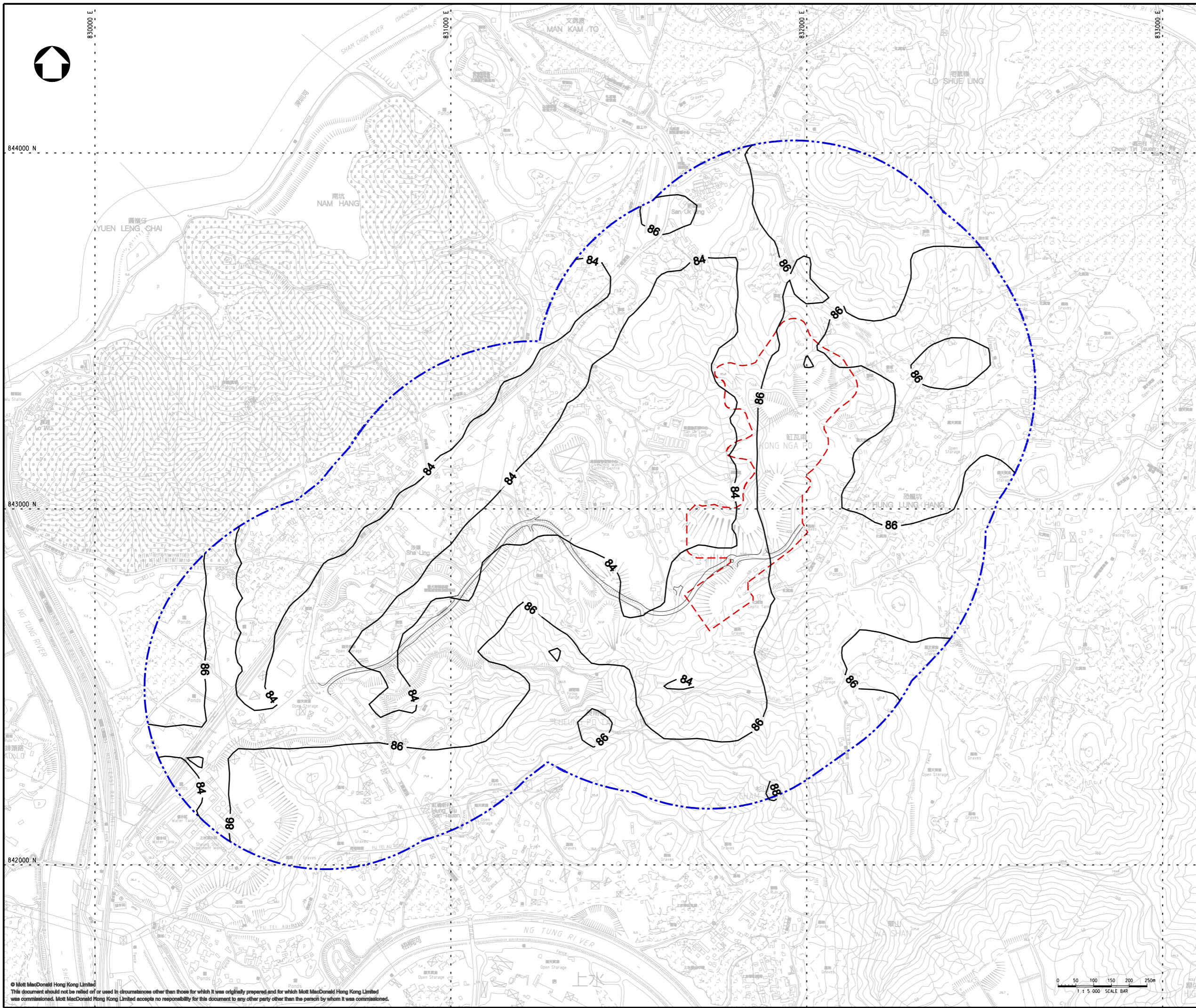
CEDD CIVIL ENGINEERING AND DEVELOPMENT DEPARTMENT

Project
**AGREEMENT NO. CE31 / 2014(CE)
ENGINEERING STUDY FOR POLICE
FACILITIES IN KONG NGA PO -
FEASIBILITY STUDY**

Title
**CUMULATIVE RESULT - CONTOUR OF
ANNUAL NO₂ CONCENTRATION ($\mu\text{g}/\text{m}^3$) AT
1.5m ABOVE GROUND DURING OPERATIONAL
PHASE (WITH FLARE OF UWTF2)**

Designed	NN	Eng check	EC
Drawn	MING	Coordination	EC
Dwg check	NN	Approved	JFP
Scale at A1	1:5000	Status	PRE
Drawing Number		Rev	P7

FIGURE 3.32



KEY PLAN
SCALE 1:50000

- LEGEND:
- - - PROPOSED KONG NGA PO DEVELOPMENT AREA
 - - - - 500m ASSESSMENT AREA
 - AOD CRITERIA ($100\mu\text{g}/\text{m}^3$)

Rev	Date	Drawn	Description	Ch'kd	App'd
P7	JUL 16	MING	GENERAL REVISION	NN	JFP
P6	JUL 16	MING	GENERAL REVISION	NN	JFP
P5	MAY 16	MING	GENERAL REVISION	NN	JFP
P4	MAR 16	MING	GENERAL REVISION	NN	JFP
P3	JAN 16	MING	GENERAL REVISION	NN	JFP
P2	DEC 15	MING	GENERAL REVISION	NN	JFP
P1	OCT 15	MING	FIRST ISSUE	NN	JFP

20/F AIA Kowloon Tower
Landmark East
100 How Ming Street
Kwun Tong, Kowloon
Hong Kong
☎ +852 2828 5757
☎ +852 2827 1823
www.mottmac.com.hk

Client

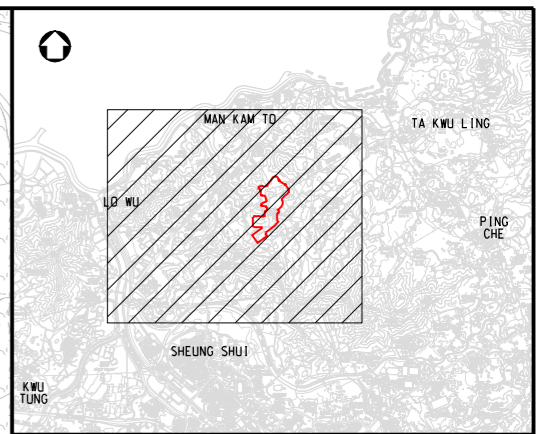
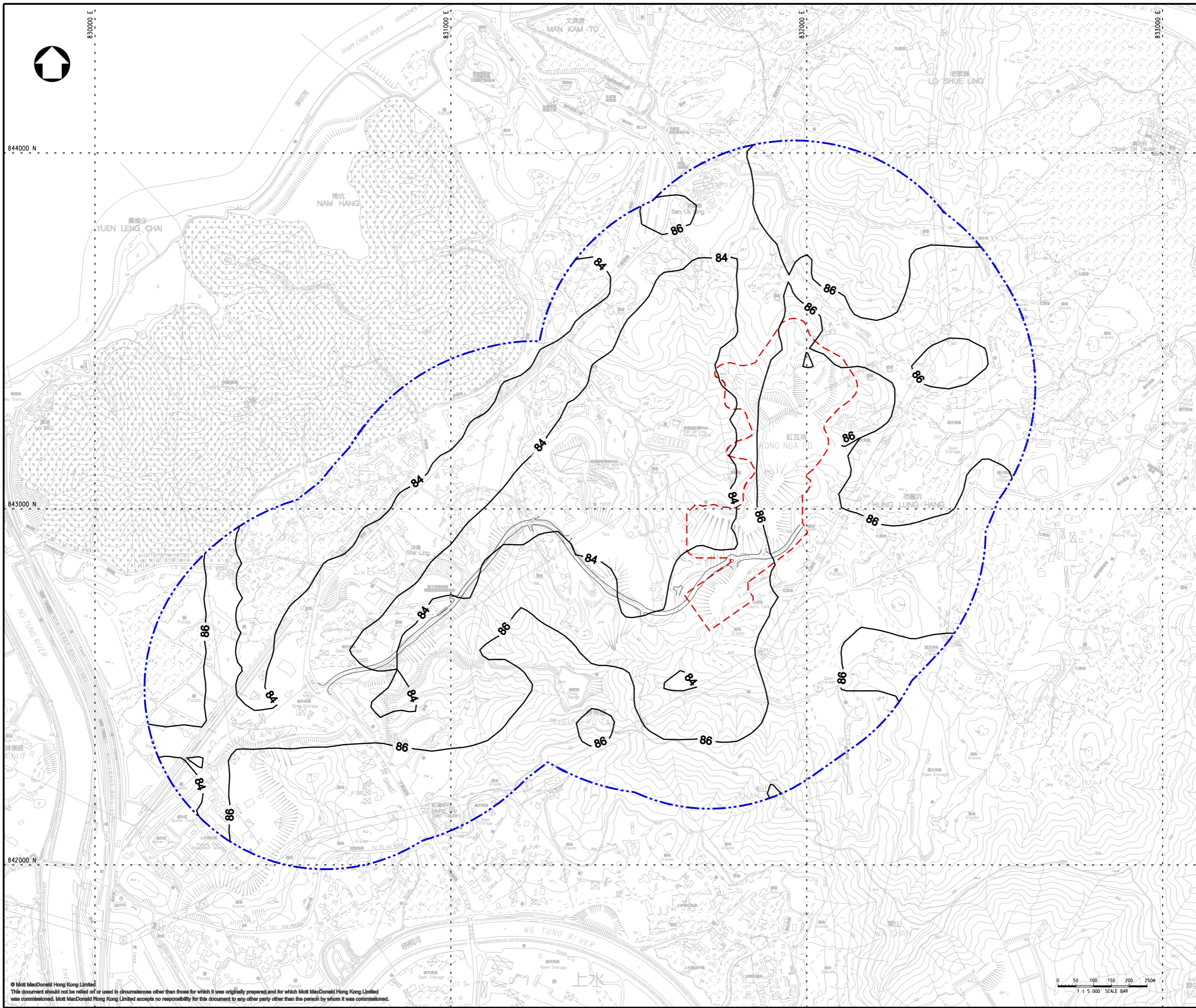
CIVIL ENGINEERING
AND DEVELOPMENT
DEPARTMENT

Project
**AGREEMENT NO. CE31 / 2014(CE)
ENGINEERING STUDY FOR POLICE
FACILITIES IN KONG NGA PO -
FEASIBILITY STUDY**

Title
**CUMULATIVE RESULT - CONTOUR OF 10TH
MAXIMUM DAILY RSP CONCENTRATION
($\mu\text{g}/\text{m}^3$) AT 1.5m ABOVE GROUND DURING
OPERATIONAL PHASE (WITH CHP AND
ODOUR TREATMENT UNIT OF OWTF2)**

Designed	NN	Eng check	EC
Drawn	MING	Coordination	EC
Dwg check	NN	Approved	JFP
Scale at A1	1:5000	Status	PRE
Drawing Number		Rev	P7

FIGURE 3.33



KEY PLAN
SCALE 1:50000

- LEGEND:
- - - PROPOSED KONG NGA PO DEVELOPMENT AREA
 - - - - - 500m ASSESSMENT AREA
 - AOD CRITERIA ($100\mu\text{g}/\text{m}^3$)

Rev	Date	Drawn	Description	Ch'kd	App'd
P7	JUL 16	MING	GENERAL REVISION	NN	JFP
P6	JUL 16	MING	GENERAL REVISION	NN	JFP
P5	MAY 16	MING	GENERAL REVISION	NN	JFP
P4	MAR 16	MING	GENERAL REVISION	NN	JFP
P3	JAN 16	MING	GENERAL REVISION	NN	JFP
P2	DEC 15	MING	GENERAL REVISION	NN	JFP
P1	OCT 15	MING	FIRST ISSUE	NN	JFP

Mott MacDonald

20/F AIA Kowloon Tower
Landmark East
100 How Ming Street
Kwun Tong, Kowloon
Hong Kong
☎ +852 2828 5757
☎ +852 2827 1823
www.mottmac.com.hk

Client

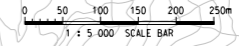
CEDD CIVIL ENGINEERING AND DEVELOPMENT DEPARTMENT

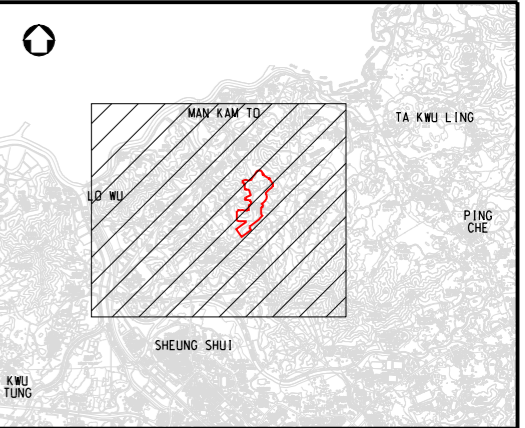
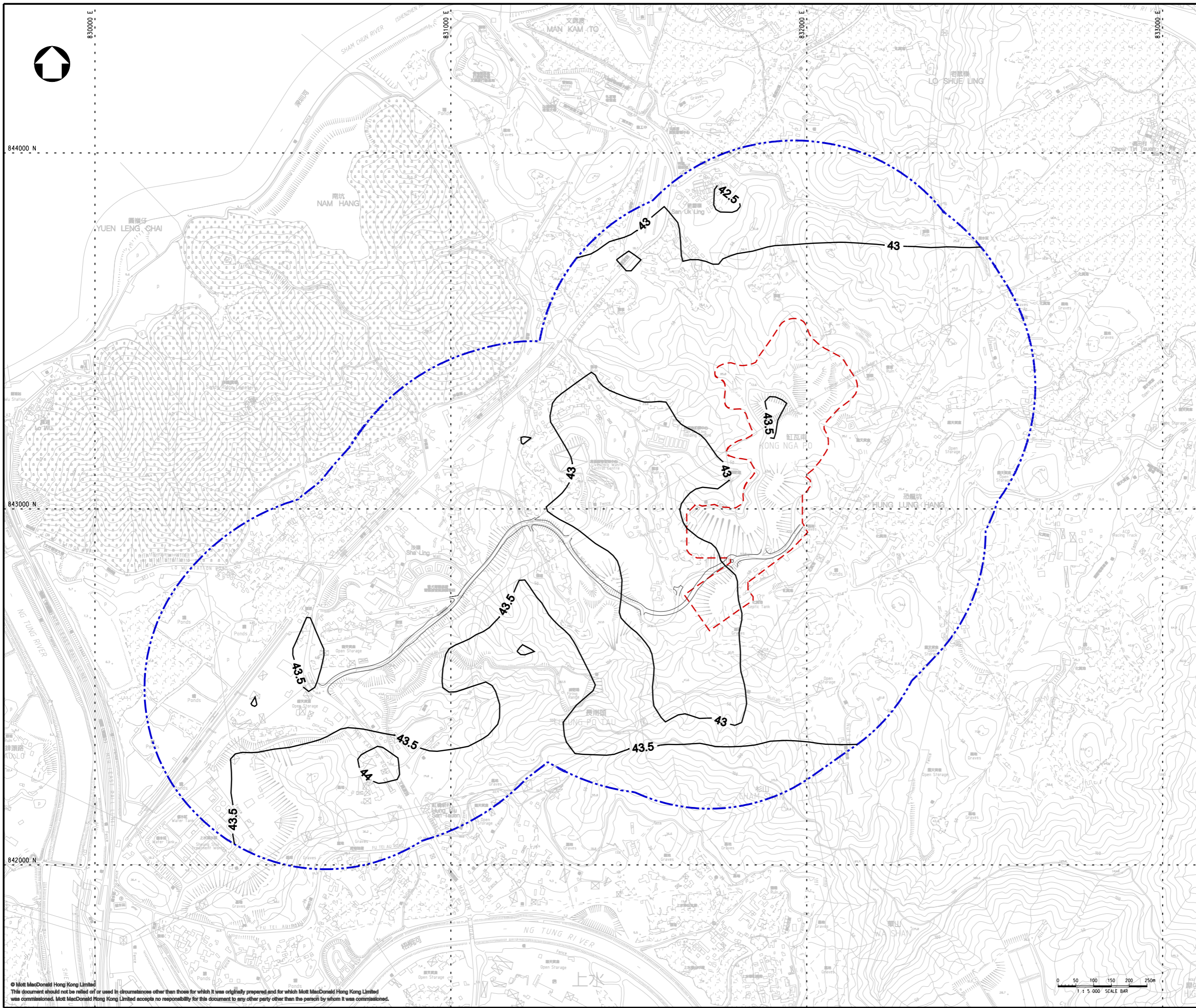
Project
**AGREEMENT NO. CE31 / 2014(CE)
ENGINEERING STUDY FOR POLICE
FACILITIES IN KONG NGA PO -
FEASIBILITY STUDY**

Title
**CUMULATIVE RESULT - CONTOUR OF 10TH
MAXIMUM DAILY RSP CONCENTRATION
($\mu\text{g}/\text{m}^3$) AT 1.5m ABOVE GROUND DURING
OPERATIONAL PHASE (WITH FLARE AND
ODOUR TREATMENT UNIT OF OWTF2)**

Designed	NN	Eng check	EC
Drawn	MING	Coordination	EC
Dwg check	NN	Approved	JFP
Scale at A1	1:5000	Status	PRE
Drawing Number		Rev	P7

FIGURE 3.34





KEY PLAN
SCALE 1:50000

- LEGEND:**
- - - PROPOSED KONG NGA PO DEVELOPMENT AREA
 - - - 500m ASSESSMENT AREA
 - AOD CRITERIA ($50\mu\text{g}/\text{m}^3$)

Rev	Date	Drawn	Description	Ch'kd	App'd
P7	JUL 16	MING	GENERAL REVISION	NN	JFP
P6	JUL 16	MING	GENERAL REVISION	NN	JFP
P5	MAY 16	MING	GENERAL REVISION	NN	JFP
P4	MAR 16	MING	GENERAL REVISION	NN	JFP
P3	JAN 16	MING	GENERAL REVISION	NN	JFP
P2	DEC 15	MING	GENERAL REVISION	NN	JFP
P1	OCT 15	MING	FIRST ISSUE	NN	JFP

Mott MacDonald

20/F AIA Kowloon Tower
Landmark East
100 How Ming Street
Kwun Tong, Kowloon
Hong Kong
☎ +852 2828 5757
☎ +862 2827 1823
www.mottmac.com.hk

Client

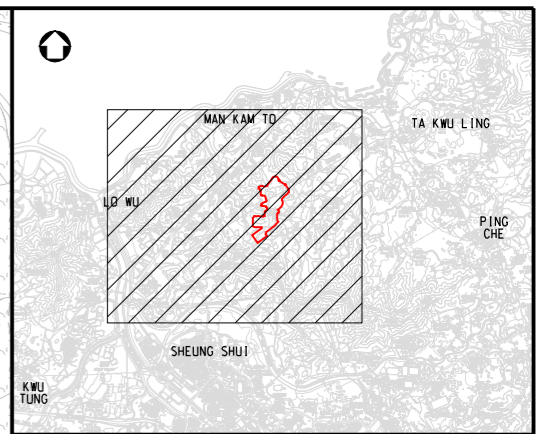
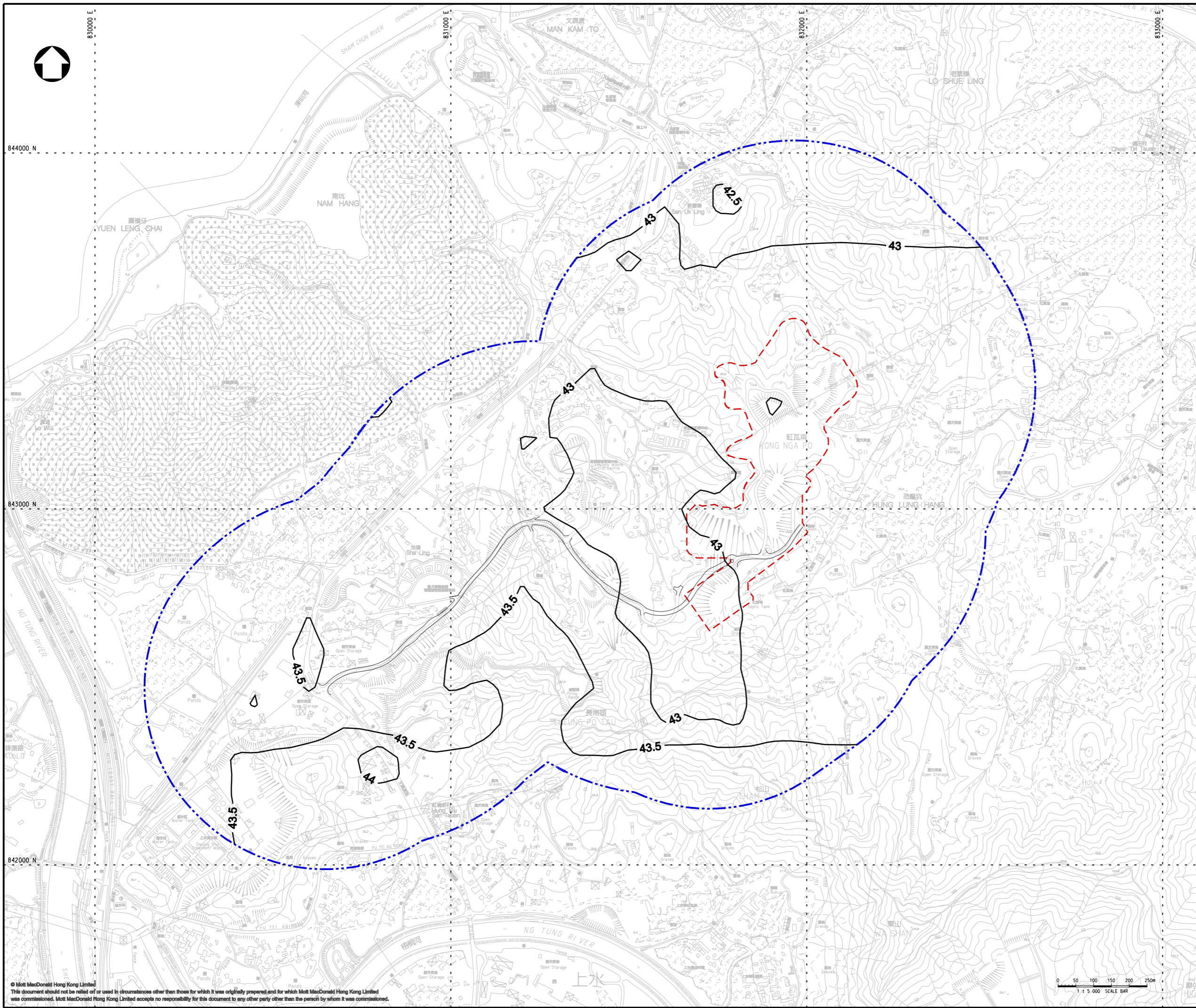
CEDD CIVIL ENGINEERING AND DEVELOPMENT DEPARTMENT

Project
**AGREEMENT NO. CE31 / 2014(CE)
ENGINEERING STUDY FOR POLICE FACILITIES IN KONG NGA PO -
FEASIBILITY STUDY**

Title
CUMULATIVE RESULT - CONTOUR OF ANNUAL RSP CONCENTRATION ($\mu\text{g}/\text{m}^3$) AT 1.5m ABOVE GROUND DURING OPERATIONAL PHASE (WITH CHP AND ODOUR TREATMENT UNIT OF OWTF2)

Designed	NN	Eng check	EC
Drawn	MING	Coordination	EC
Dwg check	NN	Approved	JFP
Scale at A1	1:5000	Status	PRE
Rev			P7

Drawing Number **FIGURE 3.35**



KEY PLAN
SCALE 1:50000

- LEGEND:**
- - - PROPOSED KONG NGA PO DEVELOPMENT AREA
 - - - 500m ASSESSMENT AREA
 - AOD CRITERIA ($50\mu\text{g}/\text{m}^3$)

Rev	Date	Drawn	Description	Ch'kd	App'd
P7	JUL 16	MING	GENERAL REVISION	NN	JFP
P6	JUL 16	MING	GENERAL REVISION	NN	JFP
P5	MAY 16	MING	GENERAL REVISION	NN	JFP
P4	MAR 16	MING	GENERAL REVISION	NN	JFP
P3	JAN 16	MING	GENERAL REVISION	NN	JFP
P2	DEC 15	MING	GENERAL REVISION	NN	JFP
P1	OCT 15	MING	FIRST ISSUE	NN	JFP

Mott MacDonald

20/F AIA Kowloon Tower
Landmark East
100 How Ming Street
Kwun Tong, Kowloon
Hong Kong
☎ +852 2828 5757
☎ +862 2827 1823
www.mottmac.com.hk

Client

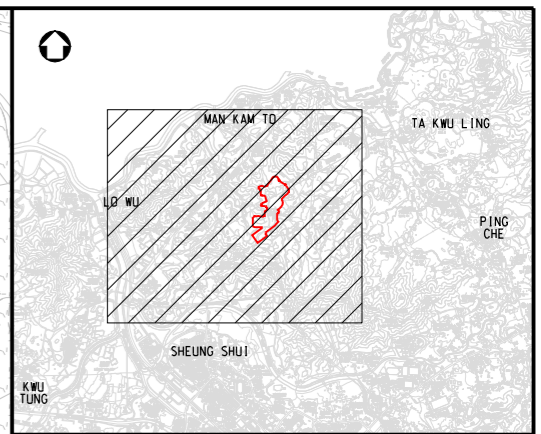
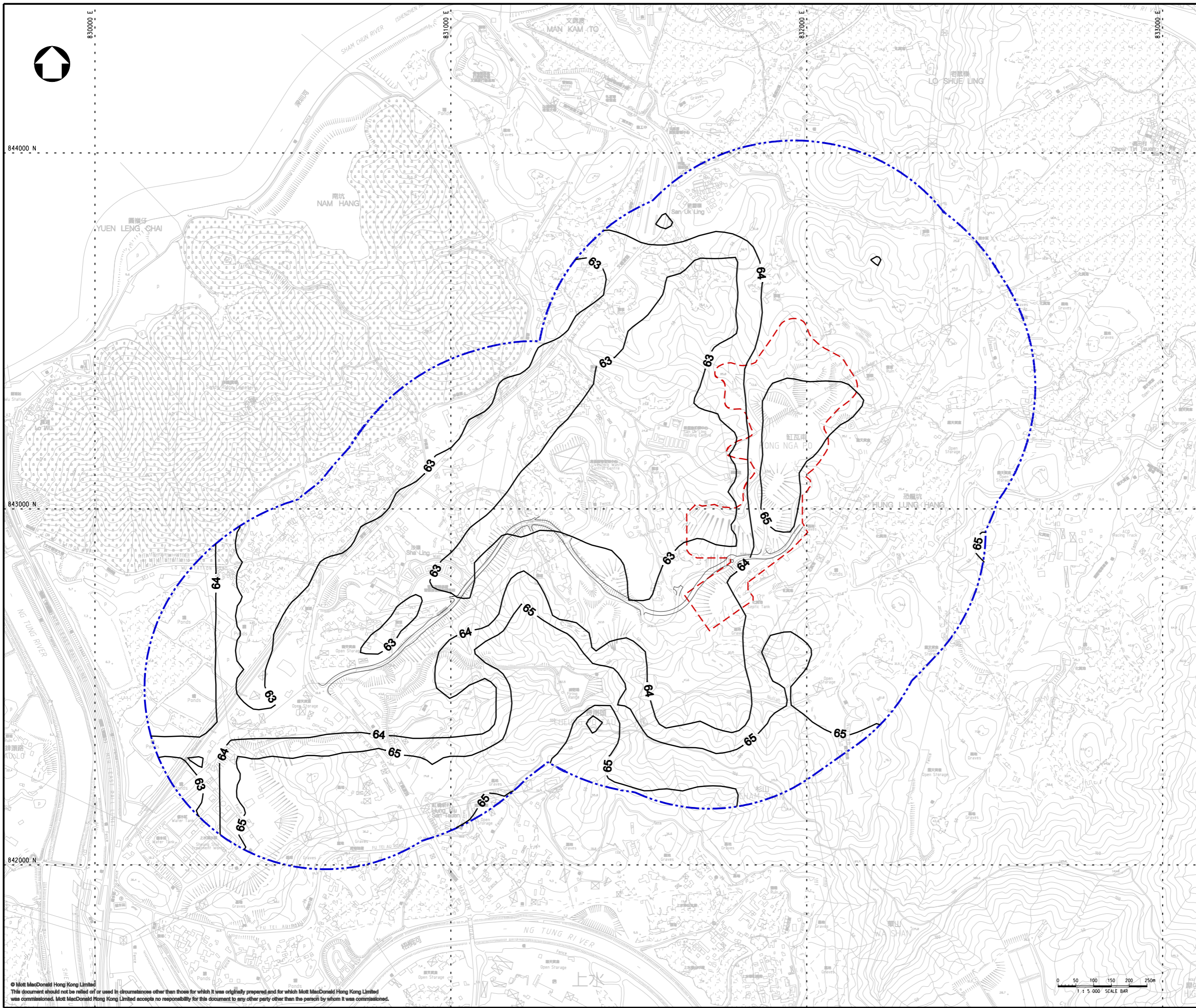
CEDD CIVIL ENGINEERING AND DEVELOPMENT DEPARTMENT

Project
**AGREEMENT NO. CE31 / 2014(CE)
ENGINEERING STUDY FOR POLICE
FACILITIES IN KONG NGA PO -
FEASIBILITY STUDY**

Title
**CUMULATIVE RESULT - CONTOUR OF
ANNUAL RSP CONCENTRATION ($\mu\text{g}/\text{m}^3$)
AT 1.5m ABOVE GROUND DURING
OPERATIONAL PHASE (WITH FLARE AND
ODOUR TREATMENT UNIT OF OWTF2)**

Designed	NN	Eng check	EC
Drawn	MING	Coordination	EC
Dwg check	NN	Approved	JFP
Scale at A1	1:5000	Status	PRE
Drawing Number		Rev	P7

FIGURE 3.36



KEY PLAN
SCALE 1:50000

- LEGEND:
- - - PROPOSED KONG NGA PO DEVELOPMENT AREA
 - - - 500m ASSESSMENT AREA
 - AOD CRITERIA ($75\mu\text{g}/\text{m}^3$)

Rev	Date	Drawn	Description	Ch'kd	App'd
P7	JUL 16	MING	GENERAL REVISION	NN	JFP
P6	JUL 16	MING	GENERAL REVISION	NN	JFP
P5	MAY 16	MING	GENERAL REVISION	NN	JFP
P4	MAR 16	MING	GENERAL REVISION	NN	JFP
P3	JAN 16	MING	GENERAL REVISION	NN	JFP
P2	DEC 15	MING	GENERAL REVISION	NN	JFP
P1	OCT 15	MING	FIRST ISSUE	NN	JFP

20/F AIA Kowloon Tower
Landmark East
100 How Ming Street
Kwun Tong, Kowloon
Hong Kong
☎ +852 2828 5757
☎ +852 2827 1823
www.mottmac.com.hk

Client

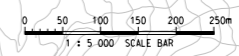
CIVIL ENGINEERING
AND DEVELOPMENT
DEPARTMENT

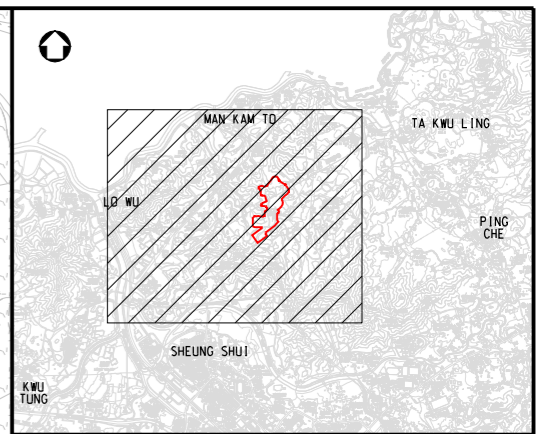
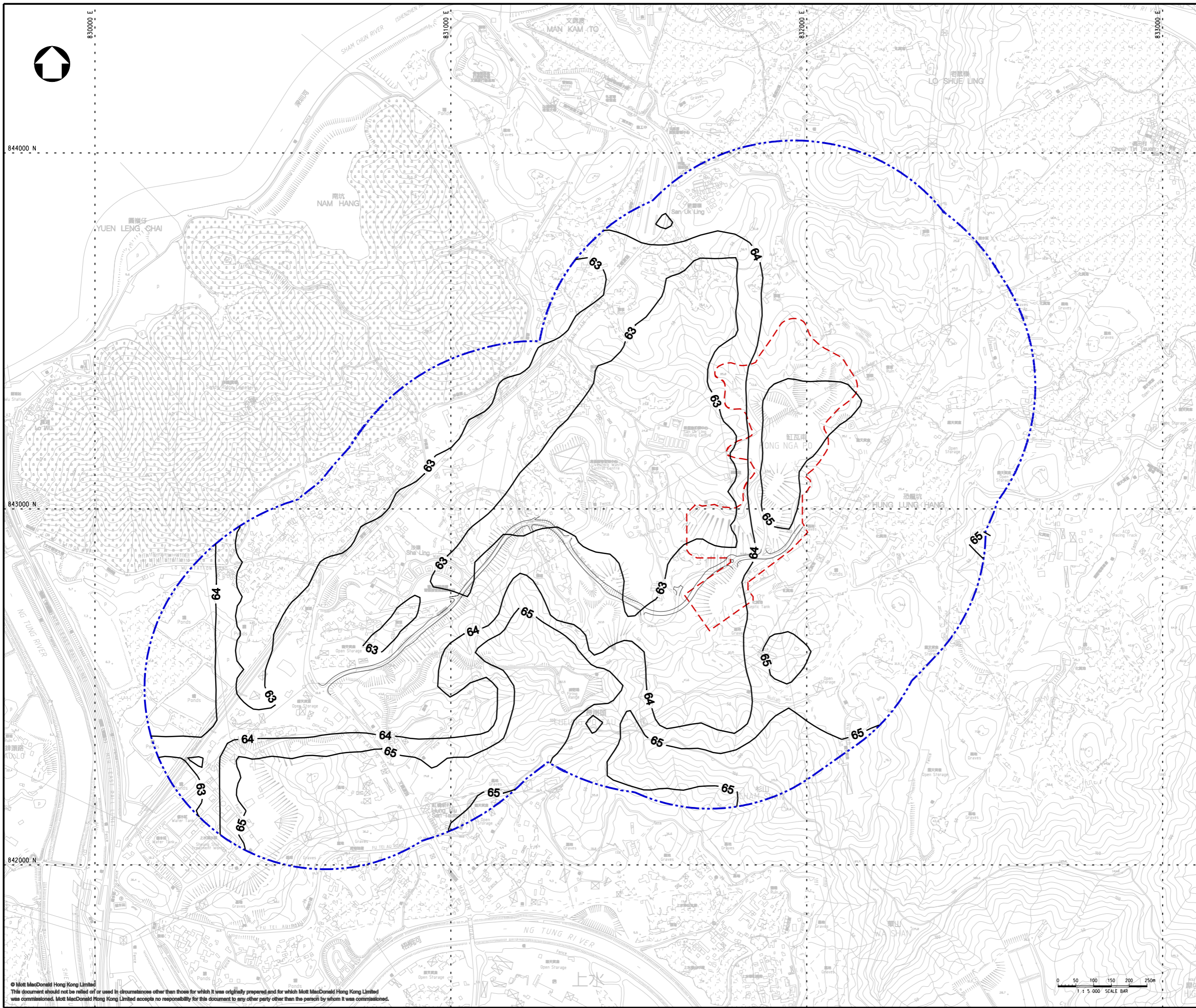
Project
**AGREEMENT NO. CE31 / 2014(CE)
ENGINEERING STUDY FOR POLICE
FACILITIES IN KONG NGA PO -
FEASIBILITY STUDY**

Title
**CUMULATIVE RESULT - CONTOUR OF 10TH
MAXIMUM DAILY FSP CONCENTRATION ($\mu\text{g}/\text{m}^3$)
AT 1.5m ABOVE GROUND DURING OPERATIONAL
PHASE (WITH CHP AND ODOUR TREATMENT
UNIT OF OWTF2)**

Designed	NN	Eng check	EC
Drawn	MING	Coordination	EC
Dwg check	NN	Approved	JFP
Scale at A1	1:5000	Status	PRE
Drawing Number		Rev	P7

FIGURE 3.37





KEY PLAN
SCALE 1:50000

- LEGEND:
- - - PROPOSED KONG NGA PO DEVELOPMENT AREA
 - - - 500m ASSESSMENT AREA
 - AOD CRITERIA ($75\mu\text{g}/\text{m}^3$)

Rev	Date	Drawn	Description	Ch'kd	App'd
P7	JUL 16	MING	GENERAL REVISION	NN	JFP
P6	JUL 16	MING	GENERAL REVISION	NN	JFP
P5	MAY 16	MING	GENERAL REVISION	NN	JFP
P4	MAR 16	MING	GENERAL REVISION	NN	JFP
P3	JAN 16	MING	GENERAL REVISION	NN	JFP
P2	DEC 15	MING	GENERAL REVISION	NN	JFP
P1	OCT 15	MING	FIRST ISSUE	NN	JFP

Mott MacDonald

20/F AIA Kowloon Tower
Landmark East
100 How Ming Street
Kwun Tong, Kowloon
Hong Kong
T +852 2828 5757
F +852 2827 1823
W www.mottmac.com.hk

Client

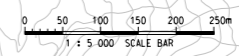
CEDD CIVIL ENGINEERING AND DEVELOPMENT DEPARTMENT

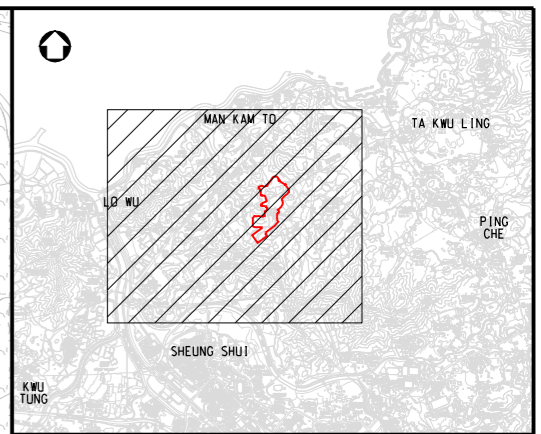
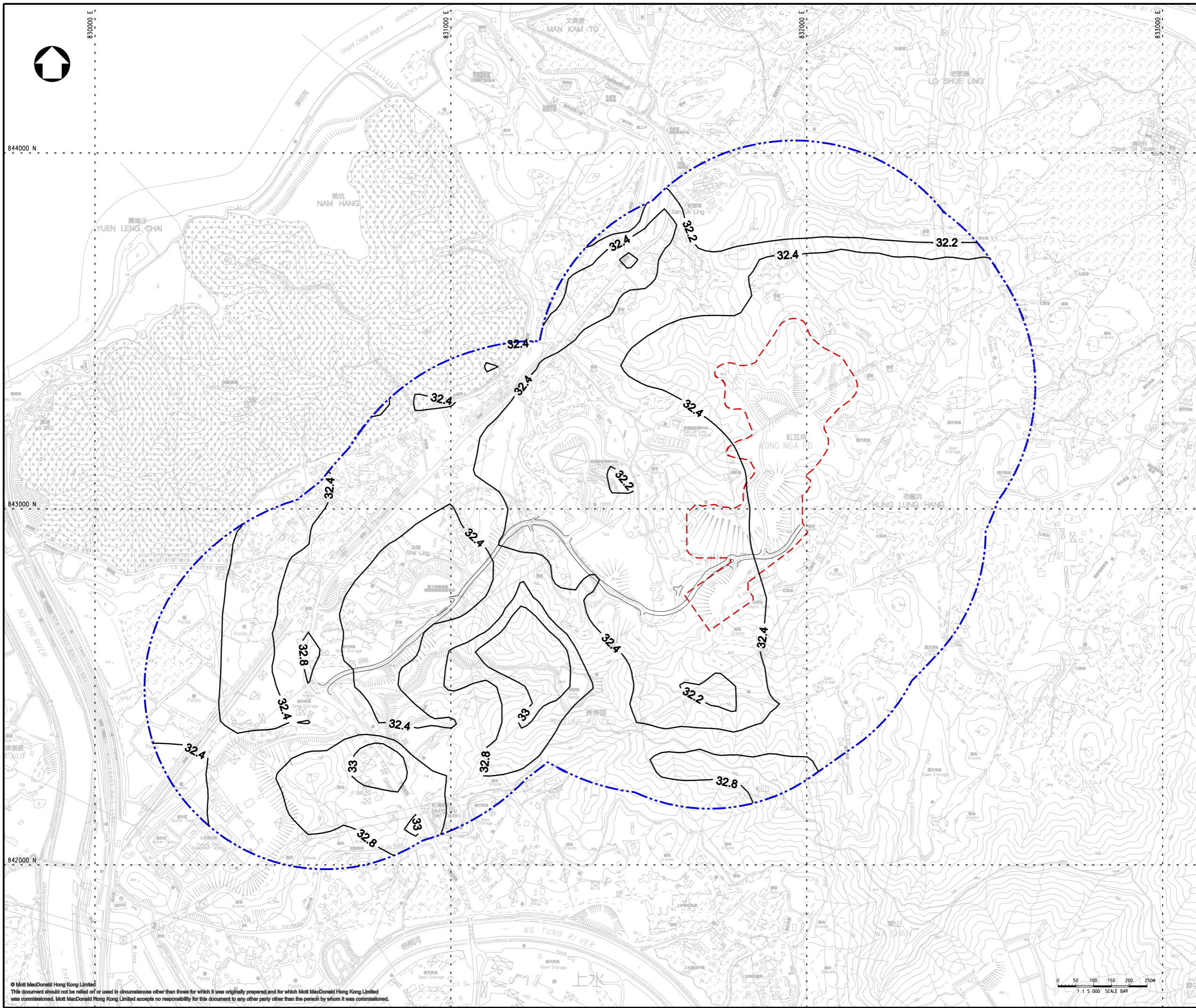
Project
**AGREEMENT NO. CE31 / 2014(CE)
ENGINEERING STUDY FOR POLICE
FACILITIES IN KONG NGA PO -
FEASIBILITY STUDY**

Title
**CUMULATIVE RESULT - CONTOUR OF 10TH
MAXIMUM DAILY FSP CONCENTRATION ($\mu\text{g}/\text{m}^3$)
AT 1.5m ABOVE GROUND DURING OPERATIONAL
PHASE (WITH FLARE AND ODOUR TREATMENT
UNIT OF OWTF2)**

Designed	NN	Eng check	EC
Drawn	MING	Coordination	EC
Dwg check	NN	Approved	JFP
Scale at A1	1:5000	Status	PRE
Rev	P7		

Drawing Number **FIGURE 3.38**





KEY PLAN
SCALE 1:50000

- LEGEND:
- - - PROPOSED KONG NGA PO DEVELOPMENT AREA
 - - - 500m ASSESSMENT AREA
 - AOD CRITERIA ($35\mu\text{g}/\text{m}^3$)

Rev	Date	Drawn	Description	Ch'kd	App'd
P3	JUL 16	MING	GENERAL REVISION	NN	JFP
P2	JUL 16	MING	GENERAL REVISION	NN	JFP
P1	MAY 16	MING	FIRST ISSUE	NN	JFP

20/F AIA Kowloon Tower
Landmark East
100 How Ming Street
Kwun Tong, Kowloon
Hong Kong
☎ +852 2828 5757
☎ +852 2827 1823
www.mottmac.com.hk

Client

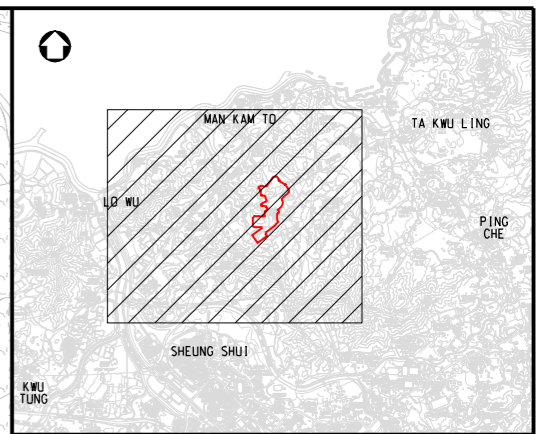
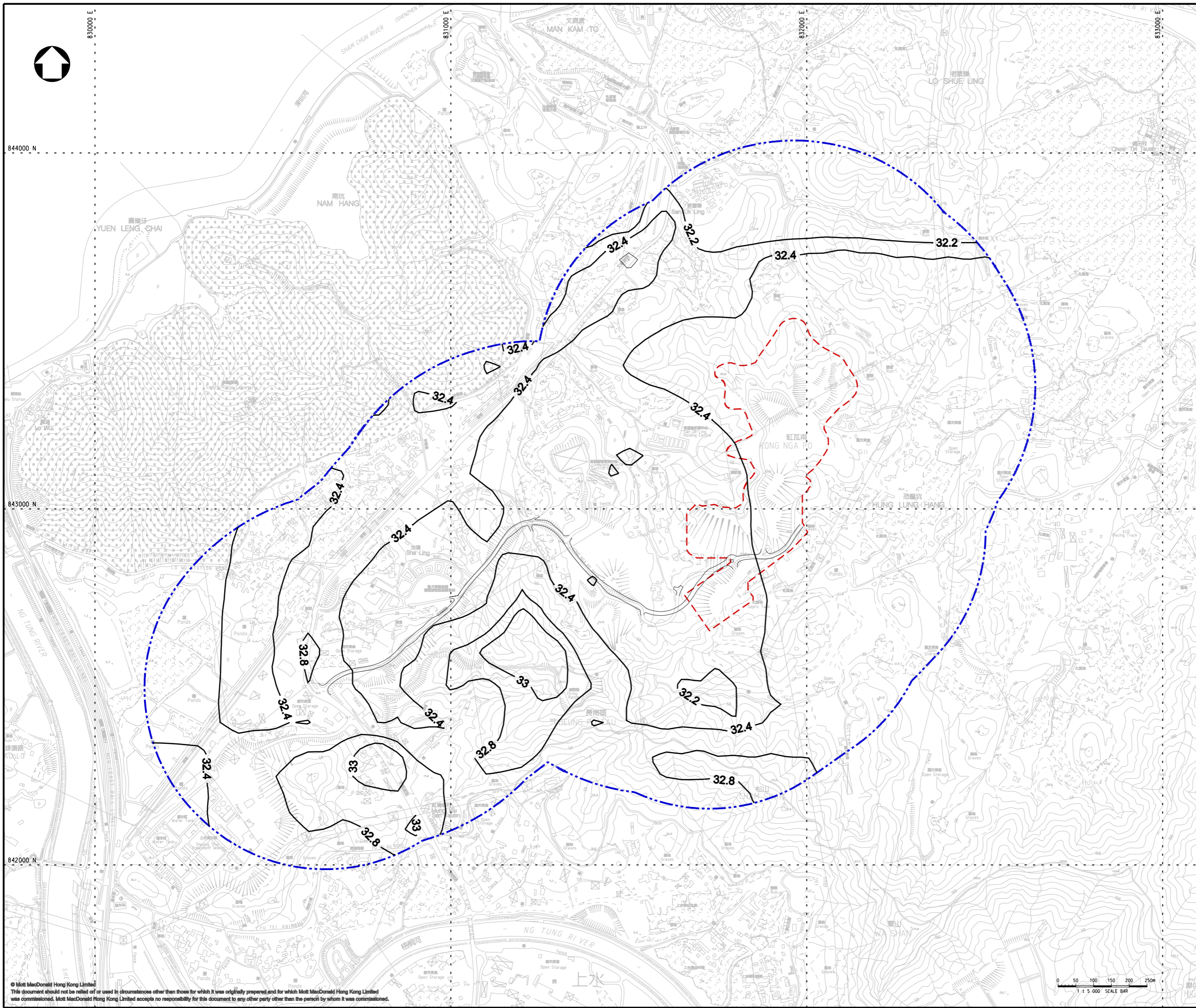
CIVIL ENGINEERING
AND DEVELOPMENT
DEPARTMENT

Project
**AGREEMENT NO. CE31 / 2014(CE)
ENGINEERING STUDY FOR POLICE
FACILITIES IN KONG NGA PO -
FEASIBILITY STUDY**

Title
**CUMULATIVE RESULT - CONTOUR OF
ANNUAL FSP CONCENTRATION ($\mu\text{g}/\text{m}^3$)
AT 1.5m ABOVE GROUND DURING
OPERATIONAL PHASE (WITH CHP AND
ODOUR TREATMENT UNIT OF OWT#2)**

Designed	NN	Eng check	EC
Drawn	MING	Coordination	EC
Dwg check	NN	Approved	JFP
Scale at A1	1:5000	Status	PRE
Rev			P3

Drawing Number **FIGURE 3.39**



KEY PLAN
SCALE 1:50000

- LEGEND:
- - - PROPOSED KONG NGA PO DEVELOPMENT AREA
 - · - · 500m ASSESSMENT AREA
 - AOD CRITERIA ($35\mu\text{g}/\text{m}^3$)

Rev	Date	Drawn	Description	Ch'kd	App'd
P3	JUL 16	MING	GENERAL REVISION	NN	JFP
P2	JUL 16	MING	GENERAL REVISION	NN	JFP
P1	MAY 16	MING	FIRST ISSUE	NN	JFP

20/F AIA Kowloon Tower
Landmark East
100 How Ming Street
Kwun Tong, Kowloon
Hong Kong
☎ +852 2828 5757
☎ +852 2827 1823
www.mottmac.com.hk

Client

CIVIL ENGINEERING
AND DEVELOPMENT
DEPARTMENT

Project
**AGREEMENT NO. CE31 / 2014(CE)
ENGINEERING STUDY FOR POLICE
FACILITIES IN KONG NGA PO -
FEASIBILITY STUDY**

Title
**CUMULATIVE RESULT - CONTOUR OF
ANNUAL FSP CONCENTRATION ($\mu\text{g}/\text{m}^3$)
AT 1.5m ABOVE GROUND DURING
OPERATIONAL PHASE (WITH FLARE AND
ODOUR TREATMENT UNIT OF OWT#2)**

Designed	NN	Eng check	EC
Drawn	MING	Coordination	EC
Dwg check	NN	Approved	JFP
Scale at A1	1:5000	Status	PRE
Drawing Number		Rev	P3

FIGURE 3.40