

**KEY PLAN**  
SCALE 1:50000

- LEGEND:**
- PROPOSED KONG NGA PO DEVELOPMENT AREA
  - POLICE DRIVING AND TRAFFIC TRAINING FACILITIES
  - FIRING RANGE
  - HELIPAD
  - PROPOSED POLICE TRAINING FACILITY
  - WEAPONS TRAINING FACILITIES
  - PROPOSED KONG NGA PO ROAD IMPROVEMENT WORKS
  - SPS SEWAGE PUMPING STATION
  - PFS PETROL / DIESEL FILLING STATION
  - UST UNDERGROUND STORMWATER STORAGE TANK
  - POTENTIAL DUST EMISSION SOURCE (AREA SOURCE)
  - x x x POTENTIAL DUST EMISSION SOURCE FOR STOCKPILE (AREA SOURCE)

Rev	Date	Drawn	Description	Ch'k'd	App'd
P5	JUL 16	MING	GENERAL REVISION	NN	JFP
P4	MAY 16	MING	GENERAL REVISION	NN	JFP
P3	MAR 16	MING	GENERAL REVISION	NN	JFP
P2	DEC 15	MING	GENERAL REVISION	NN	JFP
P1	OCT 15	MING	FIRST ISSUE	NN	JFP

20/F AIA Kowloon Tower  
 Landmark East  
 100 How Ming Street  
 Kwun Tong, Kowloon  
 Hong Kong  
 ☎ +852 2828 5757  
 ☎ +852 2827 1823  
 www.mottmac.com.hk

**Mott MacDonald**

Client

**CEDD** CIVIL ENGINEERING AND DEVELOPMENT DEPARTMENT

Project

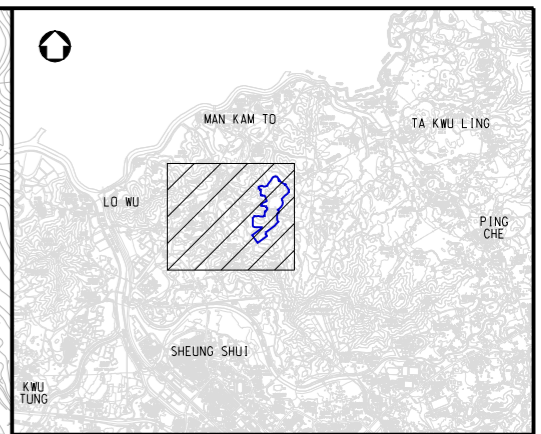
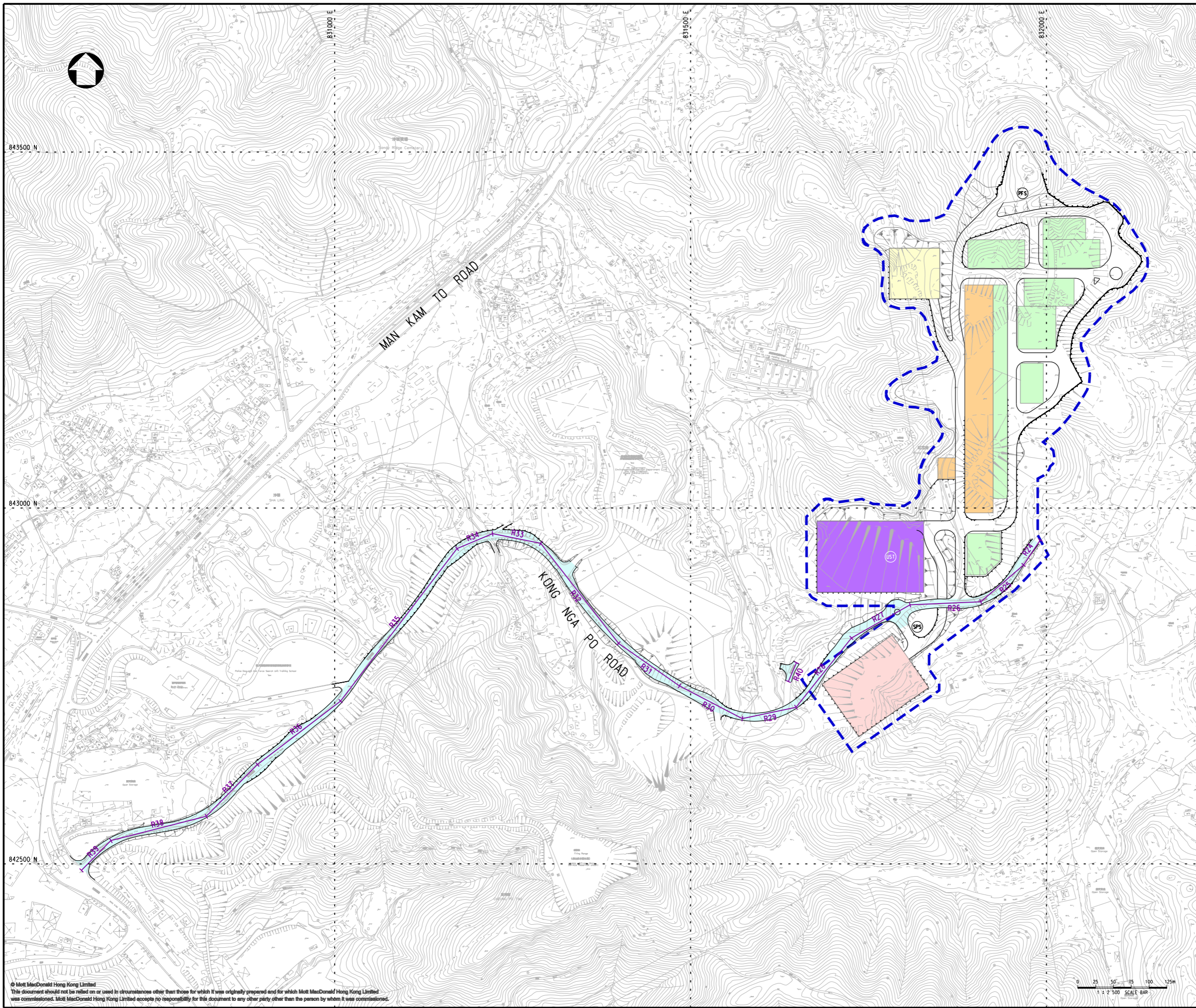
**AGREEMENT NO. CE31 / 2014(CE)  
ENGINEERING STUDY FOR POLICE FACILITIES IN KONG NGA PO -  
FEASIBILITY STUDY**

Title

**LOCATION OF POTENTIAL CONSTRUCTION DUST EMISSION AREA SOURCES (TIER 1)**

Designed	NN	Eng check	EC
Drawn	MING	Coordination	EC
Dwg check	NN	Approved	JFP
Scale at A1	1:1750	Status	PRE
Drawing Number		Rev	P5

**FIGURE 3.4**



KEY PLAN  
SCALE 1:50000

LEGEND:

- PROPOSED KONG NGA PD DEVELOPMENT AREA
- POLICE DRIVING AND TRAFFIC TRAINING FACILITIES
- FIRING RANGE
- HELIPAD
- PROPOSED POLICE TRAINING FACILITY
- WEAPONS TRAINING FACILITIES
- PROPOSED KONG NGA PD ROAD IMPROVEMENT WORKS
- SPS SEWAGE PUMPING STATION
- PFS PETROL / DIESEL FILLING STATION
- UST UNDERGROUND STORMWATER STORAGE TANK
- POTENTIAL DUST EMISSION SOURCE (LINE SOURCE)

Rev	Date	Drawn	Description	Ch'kd	App'd
P5	JUL 16	MING	GENERAL REVISION	NN	JFP
P4	MAY 16	MING	GENERAL REVISION	NN	JFP
P3	MAR 16	MING	GENERAL REVISION	NN	JFP
P2	DEC 15	MING	GENERAL REVISION	NN	JFP
P1	OCT 15	MING	FIRST ISSUE	NN	JFP

20/F AIA Kowloon Tower  
Landsmark East  
100 How Ming Street  
Kwun Tong, Kowloon  
Hong Kong  
☎ +852 2828 5757  
☎ +852 2827 1823  
www.mottmac.com.hk

Client

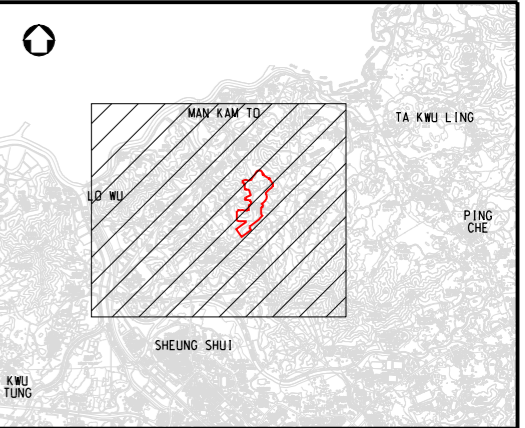
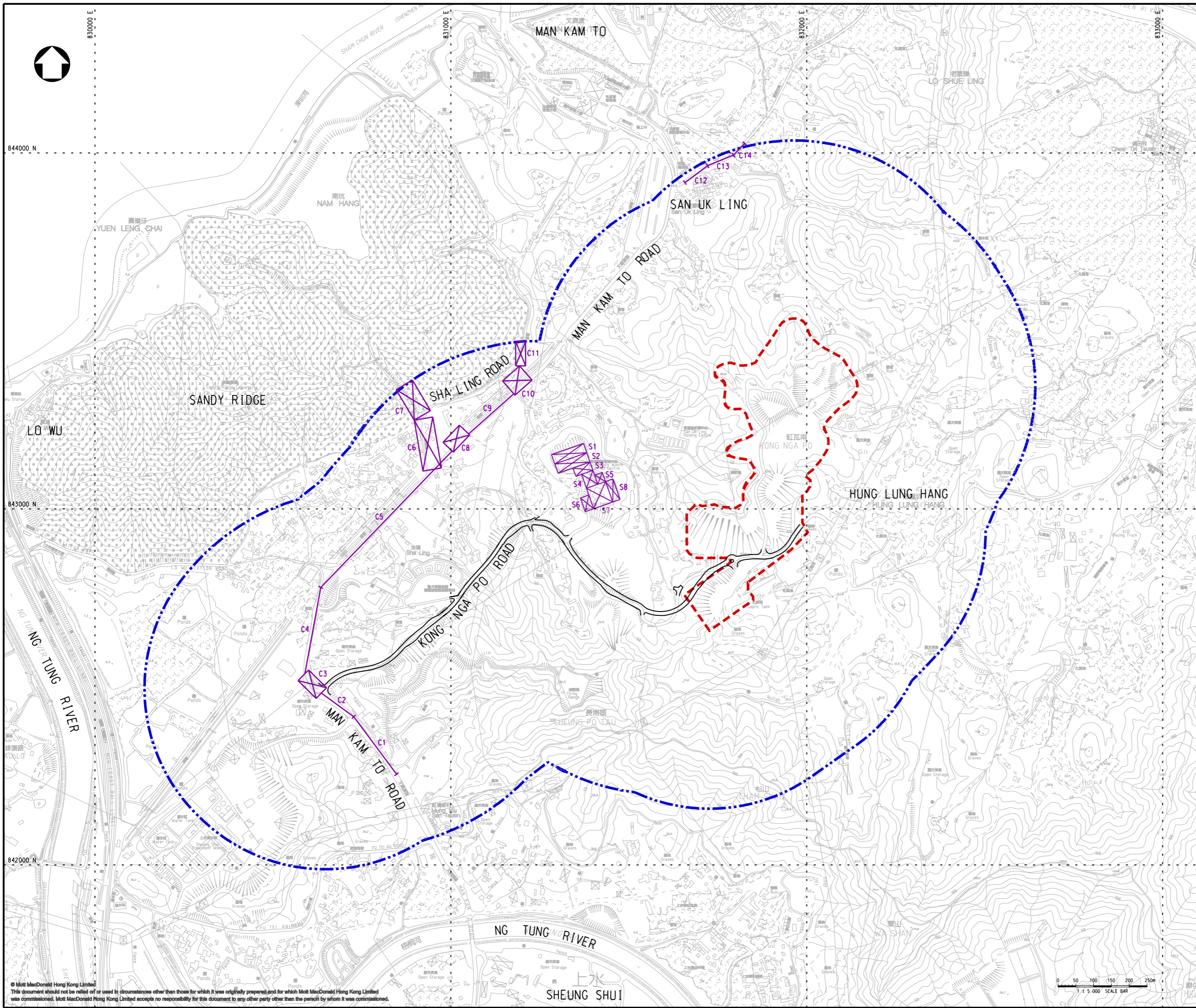
**CIVIL ENGINEERING AND DEVELOPMENT DEPARTMENT**

Project  
**AGREEMENT NO. CE31 / 2014(CE)  
ENGINEERING STUDY FOR POLICE FACILITIES IN KONG NGA PO -  
FEASIBILITY STUDY**

Title  
**LOCATION OF POTENTIAL CONSTRUCTION DUST EMISSION LINE SOURCES (TIER 1)**

Designed	NN	Eng check	EC
Drawn	MING	Coordination	EC
Dwg check	NN	Approved	JFP
Scale at A1	1:2500	Status	PRE
Rev	P5		
Drawing Number	<b>FIGURE 3.5</b>		

© Mott MacDonald Hong Kong Limited  
This document should not be relied on or used in circumstances other than those for which it was originally prepared and for which Mott MacDonald Hong Kong Limited was commissioned. Mott MacDonald Hong Kong Limited accepts no responsibility to any other party other than the person by whom it was commissioned.



**KEY PLAN**  
SCALE 1:50000

- LEGEND:**
- - - PROPOSED KONG NGA PO DEVELOPMENT AREA
  - - - 500m ASSESSMENT AREA
- COLUMBARIUM, CREMATORIUM AND RELATED FACILITIES AT SANDY RIDGE:-**
- POTENTIAL DUST EMISSION SOURCE (LINE SOURCE)
  - POTENTIAL DUST EMISSION SOURCE (AREA SOURCE)

Rev	Date	Drawn	Description	Ch'k'd	App'd
P5	JUL 16	MING	GENERAL REVISION	NN	JFP
P4	MAY 16	MING	GENERAL REVISION	NN	JFP
P3	MAR 16	MING	GENERAL REVISION	NN	JFP
P2	DEC 15	MING	GENERAL REVISION	NN	JFP
P1	OCT 15	MING	FIRST ISSUE	NN	JFP

20/F AIA Kowloon Tower  
Landmark East  
100 How Ming Street  
Kwun Tong, Kowloon  
Hong Kong  
☎ +852 2828 5757  
☎ +862 2827 1823  
www.mottmac.com.hk

Client

**CIVIL ENGINEERING AND DEVELOPMENT DEPARTMENT**

Project  
**AGREEMENT NO. CE31 / 2014(CE)  
ENGINEERING STUDY FOR POLICE FACILITIES IN KONG NGA PO -  
FEASIBILITY STUDY**

Title  
**LOCATION OF POTENTIAL DUST EMISSION SOURCES FROM CONCURRENT PROJECTS**

Designed	NN	Eng check	EC
Drawn	MING	Coordination	EC
Dwg check	NN	Approved	JFP
Scale at A1	1:5000	Status	PRE
Rev			P5

Drawing Number **FIGURE 3.6**