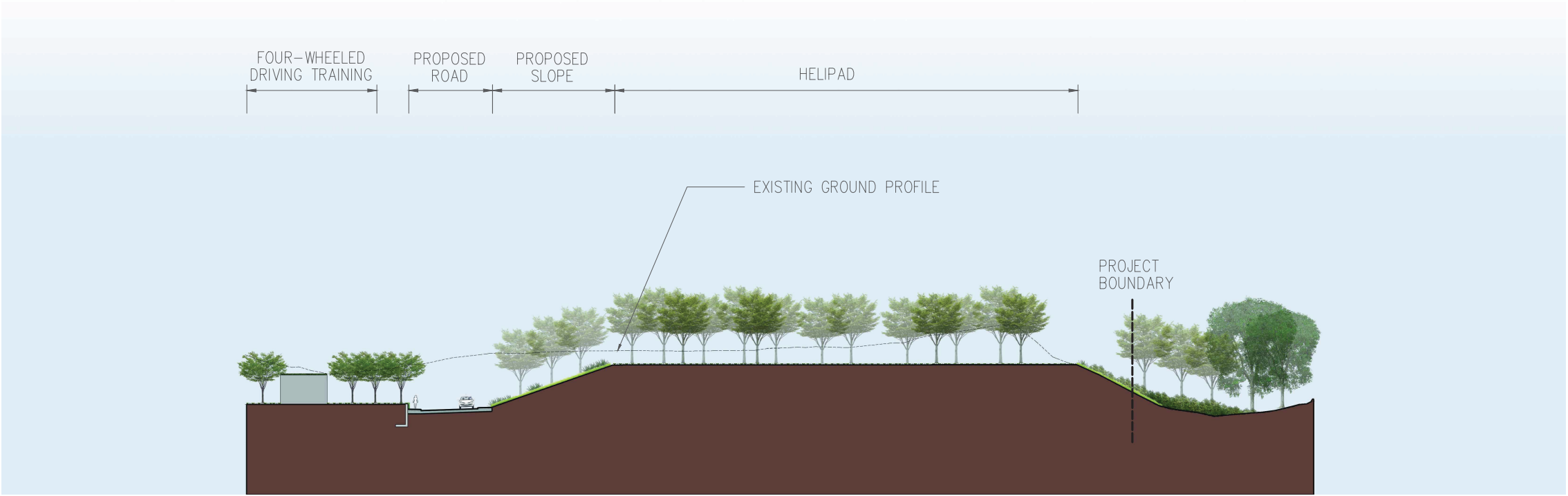
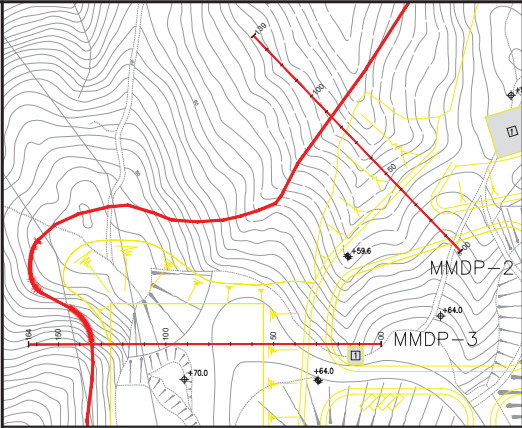


Section MMDP-2



Section MMDP-3



LOCATION PLAN
N.T.S.

- LEGEND:
- PROPOSED BUILDINGS AND STRUCTURES
 - PROPOSED ROAD
 - RETAINING WALLS
 - PRESERVED WOODLAND
 - PROPOSED WOODLAND BUFFER PLANTING
 - PROPOSED SHRUB PLANTING
 - PROPOSED AMENITY TREE AND SHRUB PLANTING
 - PROPOSED SHRUB-GRASSLAND
 - PROPOSED GREEN PAVING
 - PROPOSED GREEN ROOFS
 - PROPOSED VERTICAL GREENING (CLIMBING PLANTS)

P1	SEP 15	CCH	FIRST ISSUE	MT	SHC
Rev	Date	Drawn	Description	Ch'k'd	App'd



20/F AIA Kowloon Tower
Landmark East
100 How Ming Street
Kwun Tong, Kowloon
Hong Kong
T +852 2388 5757
F +852 2387 1888
W www.mottmacd.com.hk

Client



CIVIL ENGINEERING
AND DEVELOPMENT
DEPARTMENT

Project

AGREEMENT NO. CE31 / 2014(CE)
ENGINEERING STUDY FOR POLICE
FACILITIES IN KONG NGA PO -
FEASIBILITY STUDY

Title

LANDSCAPE AND VISUAL MITIGATION
MEASURES - SECTIONS

Designed	KC	Eng check	MT
Drawn	CCH	Coordination	LL
Dwg check	KC	Approved	SHC
Scale at A1	1:400	Status	PRE
Drawing Number		Rev	P1

FIGURE 10-26