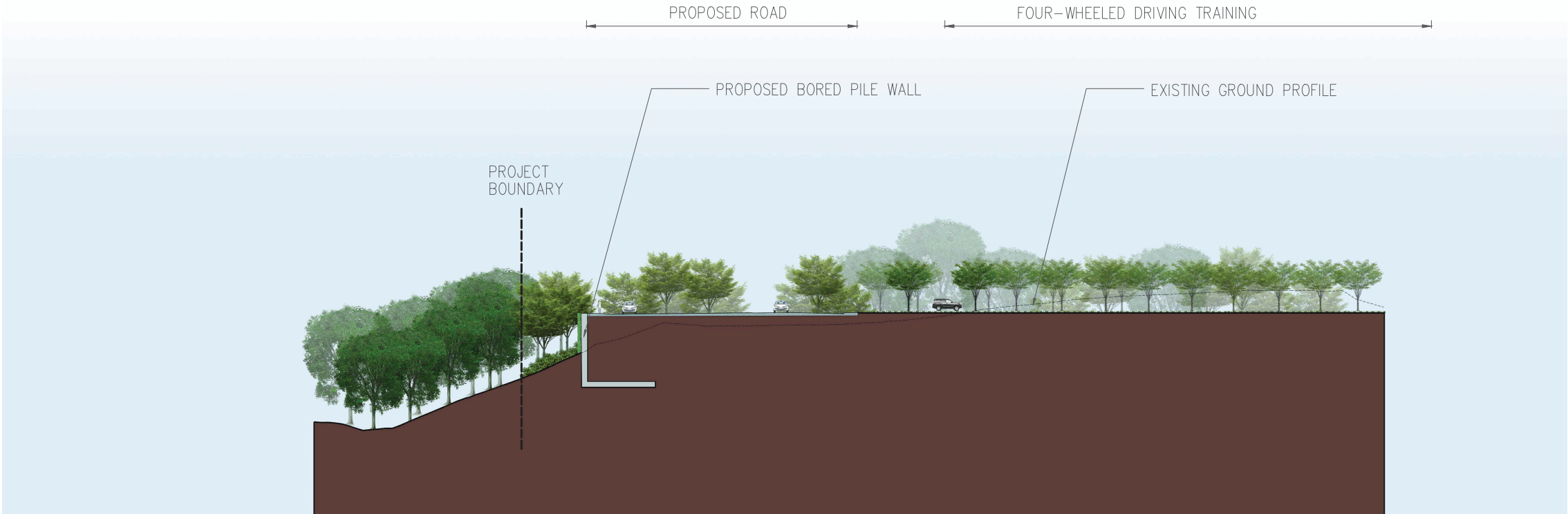
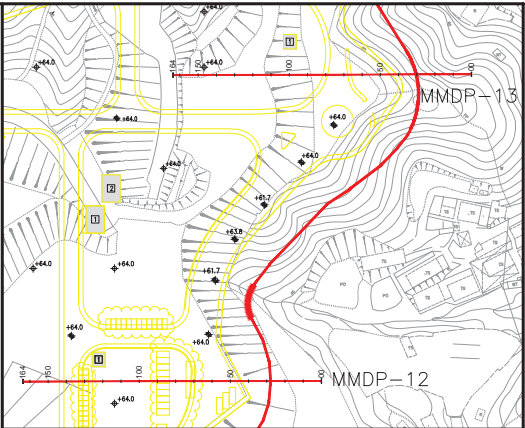


Section MMDP-12



Section MMDP-13




LOCATION PLAN
N.T.S.

- LEGEND:
- PROPOSED BUILDINGS AND STRUCTURES
 - PROPOSED ROAD
 - RETAINING WALLS
 - PRESERVED WOODLAND
 - PROPOSED WOODLAND BUFFER PLANTING
 - PROPOSED SHRUB PLANTING
 - PROPOSED AMENITY TREE AND SHRUB PLANTING
 - PROPOSED SHRUB-GRASSLAND
 - PROPOSED GREEN PAVING
 - PROPOSED GREEN ROOFS
 - PROPOSED VERTICAL GREENING (CLIMBING PLANTS)

P1	SEP 15	CCH	FIRST ISSUE	MT	SHC
Rev	Date	Drawn	Description	Ch'k'd	App'd



20/F AIA Kowloon Tower
Landmark East
100 How Ming Street
Kwun Tong, Kowloon
Hong Kong
T +852 2388 5767
F +852 2387 1888
W www.mottmac.com.hk

Client	 CIVIL ENGINEERING AND DEVELOPMENT DEPARTMENT
--------	--

Project	AGREEMENT NO. CE31 / 2014(CE) ENGINEERING STUDY FOR POLICE FACILITIES IN KONG NGA PO - FEASIBILITY STUDY
---------	---

Title	LANDSCAPE AND VISUAL MITIGATION MEASURES - SECTIONS
-------	--

Designed	KC	Eng check	MT
Drawn	CCH	Coordination	LL
Dwg check	KC	Approved	SHC
Scale at A1	1:400	Status	PRE
		Rev	P1

Drawing Number	FIGURE 10-31
----------------	--------------