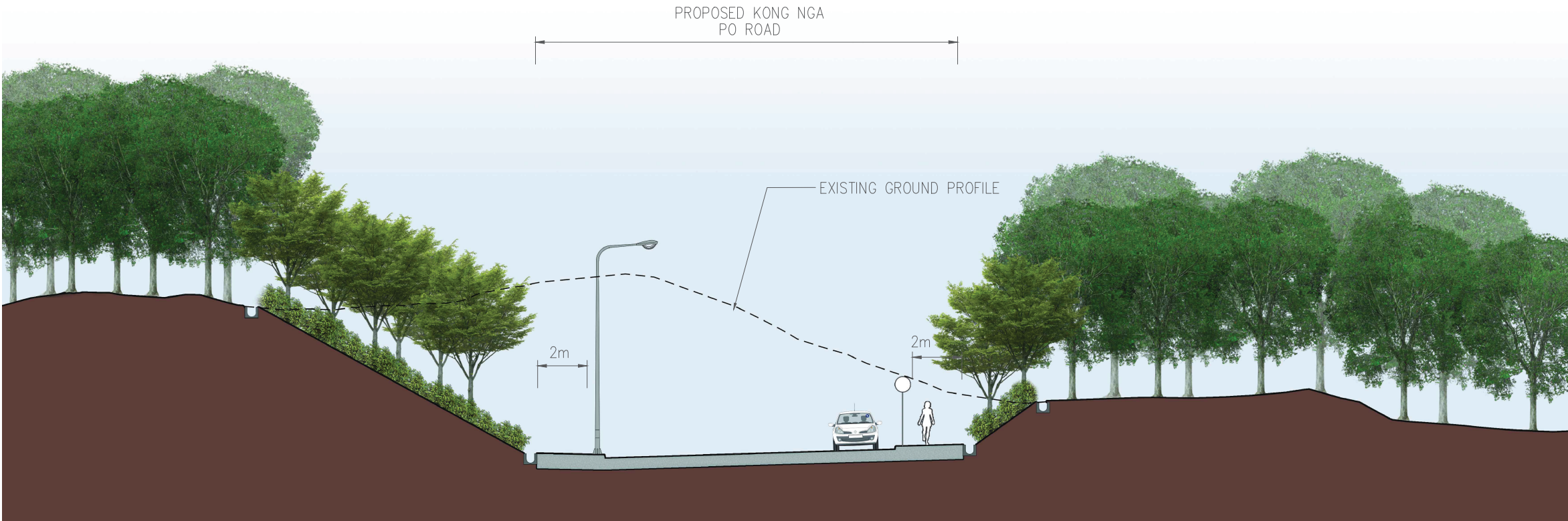
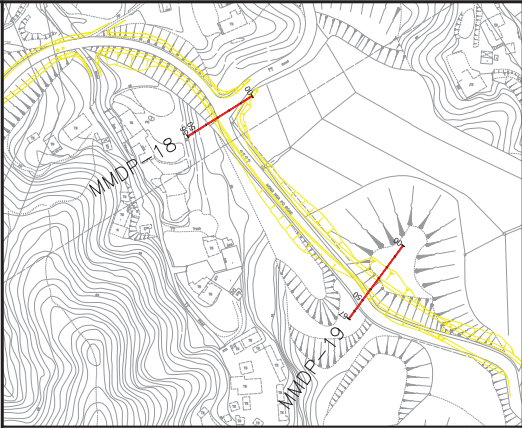


Section MMDP - 18



Section MMDP - 19



LOCATION PLAN  
N.T.S.

LEGEND:

- PROPOSED KNP ROAD
- RETAINING WALLS
- PRESERVED WOODLAND
- PROPOSED WOODLAND BUFFER PLANTING
- PROPOSED SHRUB PLANTING
- PROPOSED VERTICAL GREENING (CLIMBING PLANTS)

P1	SEP 15	CCH	FIRST ISSUE	MT	SHC
Rev	Date	Drawn	Description	Ch'k'd	App'd



20/F AIA Kowloon Tower  
Landmark East  
100 How Ming Street  
Kwun Tong, Kowloon  
Hong Kong  
T +852 2388 5767  
F +852 2387 1888  
W www.mottmac.com.hk

Client



CIVIL ENGINEERING  
AND DEVELOPMENT  
DEPARTMENT

Project

AGREEMENT NO. CE31 / 2014(CE)  
ENGINEERING STUDY FOR POLICE  
FACILITIES IN KONG NGA PO -  
FEASIBILITY STUDY

Title

LANDSCAPE AND VISUAL MITIGATION  
MEASURES - SECTIONS

Designed	KC	Eng check	MT
Drawn	CCH	Coordination	LL
Dwg check	KC	Approved	SHC
Scale at A1	1:100	Status	PRE
Drawing Number		Rev	P1

FIGURE 10-34