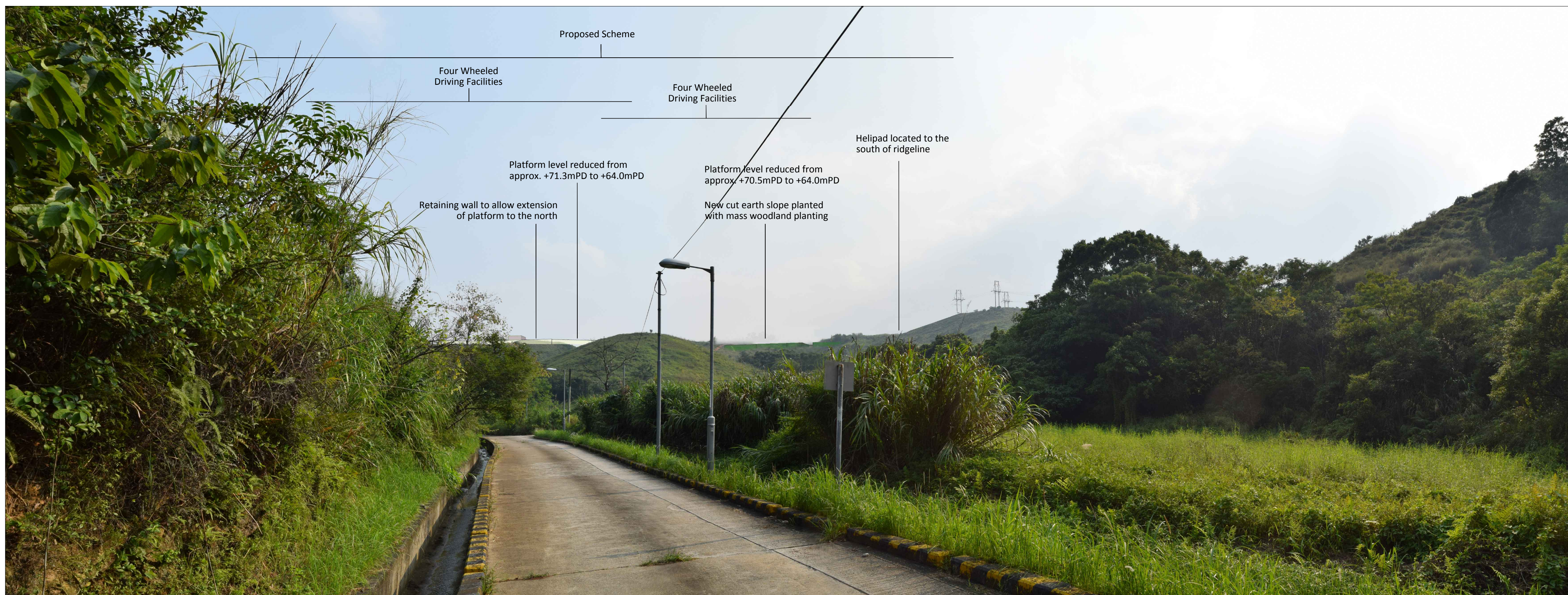
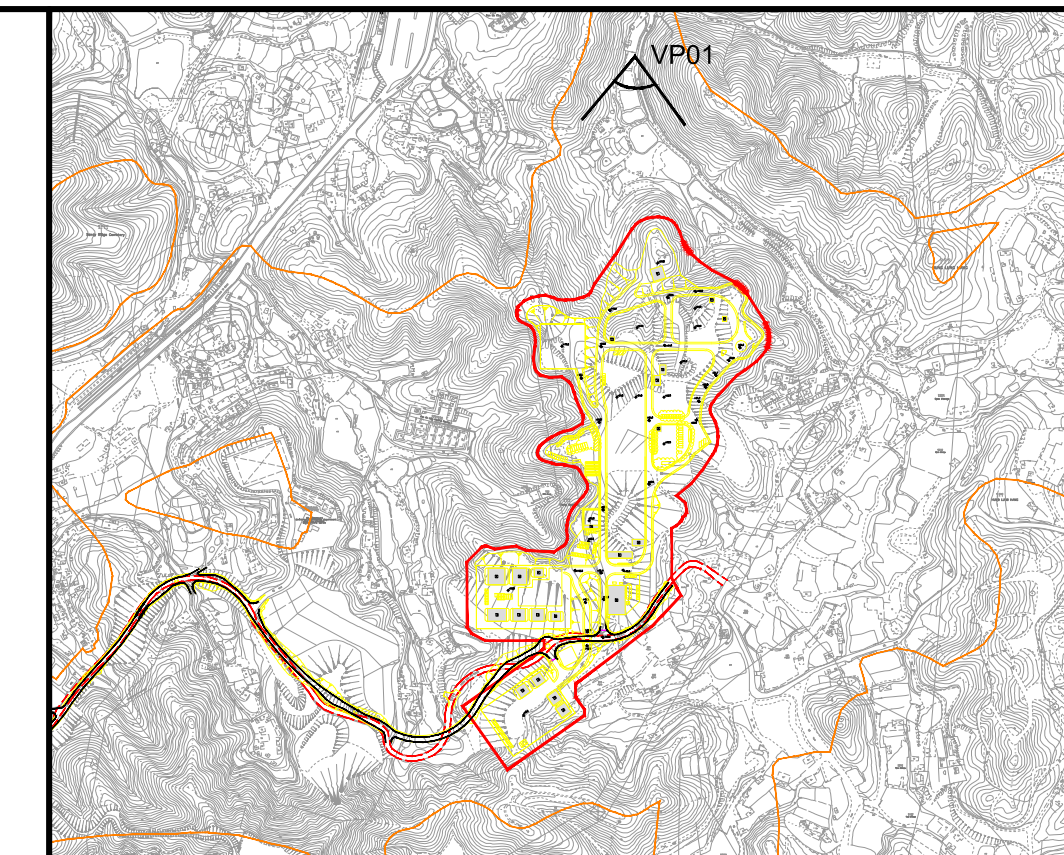




Vantage Point 01: View looking south for vehicle travellers and pedestrians on small rural road (VSR1.1) (Existing Situation)



Vantage Point 01: View looking south for vehicle travellers and pedestrians on small rural road (VSR1.1) (Day 1 with no mitigation measures)




LOCATION PLAN
N.T.S.

Vantage Point 01 (VP01)
 Vantage Point Elevation: +15.6mPD
 Viewing distance: 180m
 Maximum Height of Proposed Scheme: +75.5mPD

Rev	Date	Drawn	Description	Ch'k'd	App'd
P1	SEP 15	CCH	FIRST ISSUE	MT	SHC



20/F AIA Kowloon Tower
 Landmark East
 100 How Ming Street
 Kwun Tong, Kowloon
 Hong Kong
 T +852 2626 5757
 F +852 2627 1823
 www.mottmac.com.hk

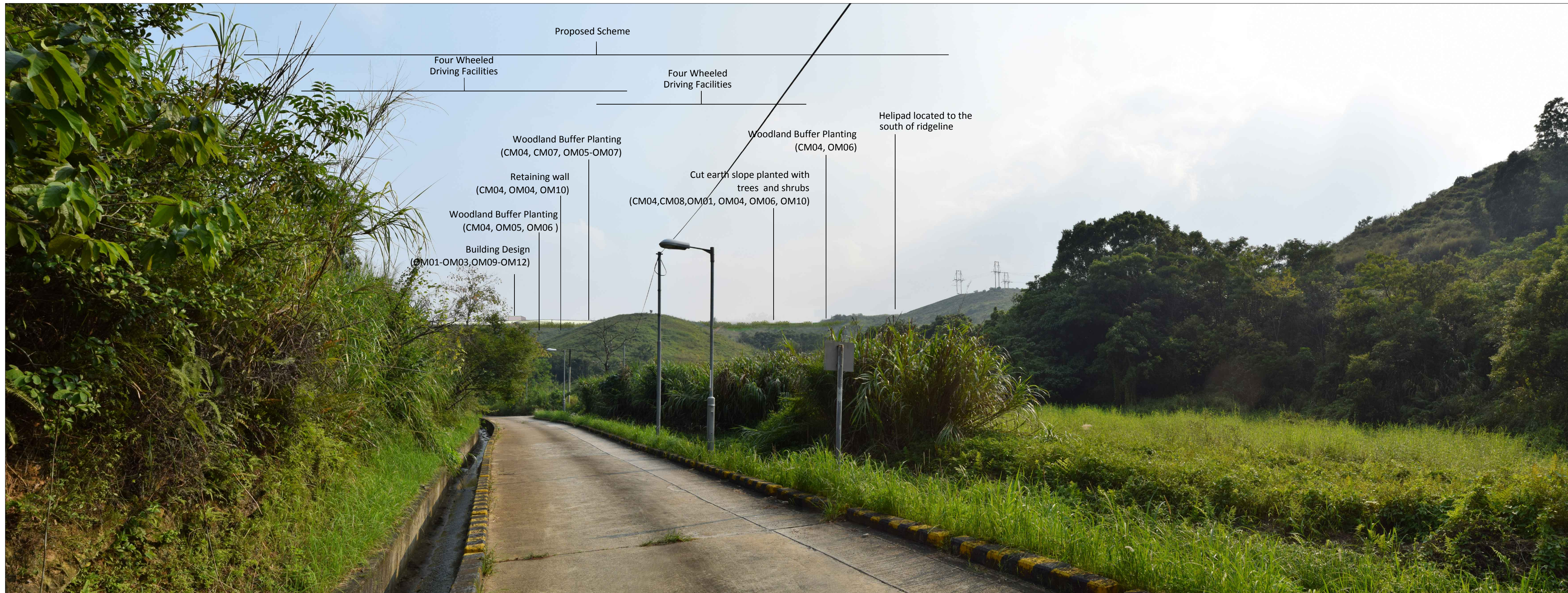
Client
 CIVIL ENGINEERING AND DEVELOPMENT DEPARTMENT

Project
 AGREEMENT NO. CE31 / 2014(CE)
 ENGINEERING STUDY FOR POLICE FACILITIES IN KONG NGA PO - FEASIBILITY STUDY

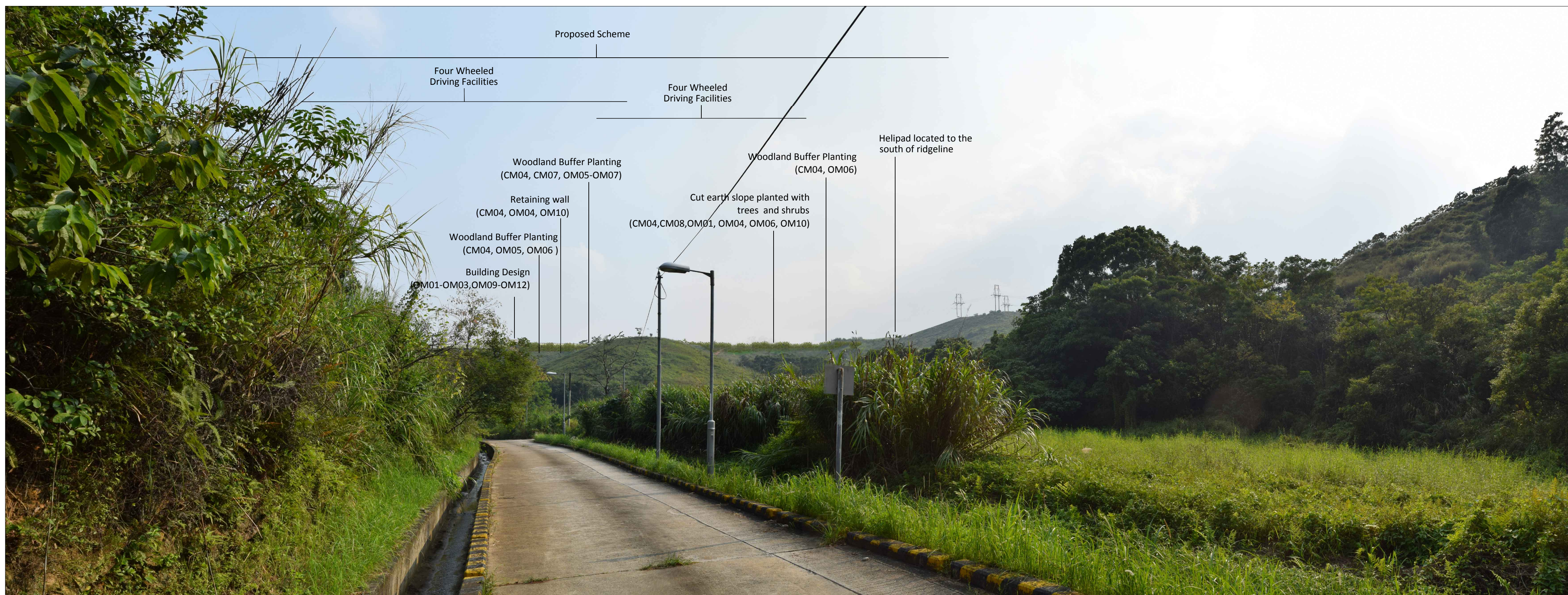
Title
 LANDSCAPE AND VISUAL MITIGATION MEASURES - PHOTOMONTAGE

Designed	KC	Eng check	MT
Drawn	CCH	Coordination	LL
Dwg check	KC	Approved	SHC
Scale at A1	N.T.S.	Status	PRE
		Rev	P1

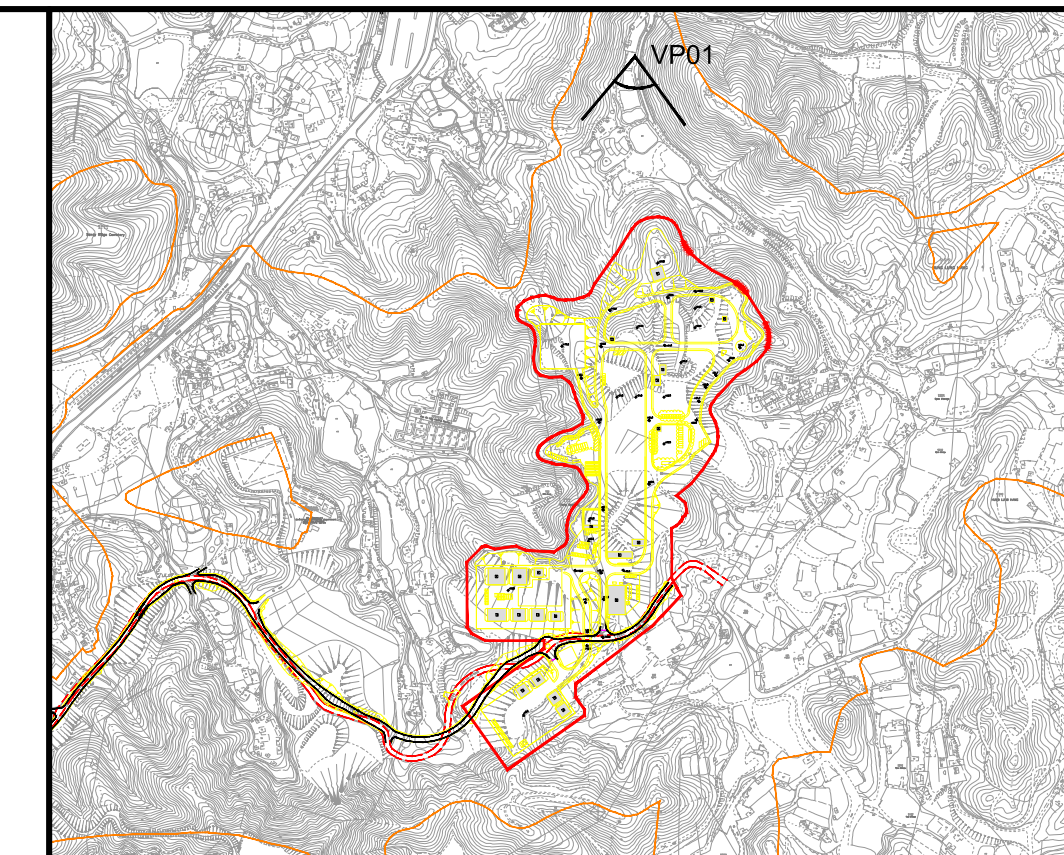
Drawing Number
 FIGURE 10-39



Vantage Point 01: View looking south for vehicle travellers and pedestrians on small rural road (VSR1.1) (Day 1 with mitigation measures)




Vantage Point 01: View looking south for vehicle travellers and pedestrians on small rural road (VSR1.1) (Year 10 with mitigation measures)



LOCATION PLAN
N.T.S.


Vantage Point 01 (VP01)
 Vantage Point Elevation: +15.6mPD
 Viewing distance: 180m
 Maximum Height of Proposed Scheme: +75.5mPD

Rev	Date	Drawn	Description	Ch'k'd	App'd
P1	SEP 15	CCH	FIRST ISSUE	MT	SHC



20/F AIA Kowloon Tower
 Landmark East
 100 How Ming Street
 Kwun Tong, Kowloon
 Hong Kong
 T +852 2626 5757
 F +852 2627 1823
 www.mottmac.com.hk

Client



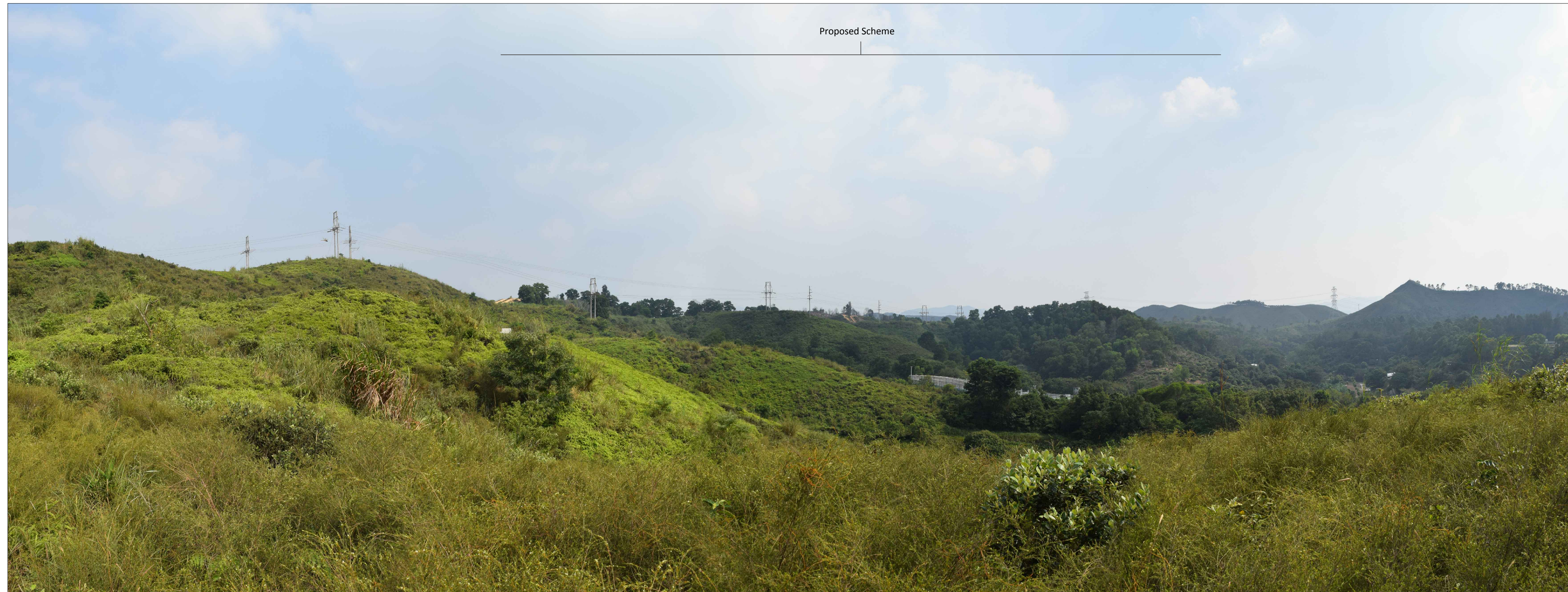
CIVIL ENGINEERING
 AND DEVELOPMENT
 DEPARTMENT

Project
 AGREEMENT NO. CE31 / 2014(CE)
 ENGINEERING STUDY FOR POLICE
 FACILITIES IN KONG NGA PO -
 FEASIBILITY STUDY

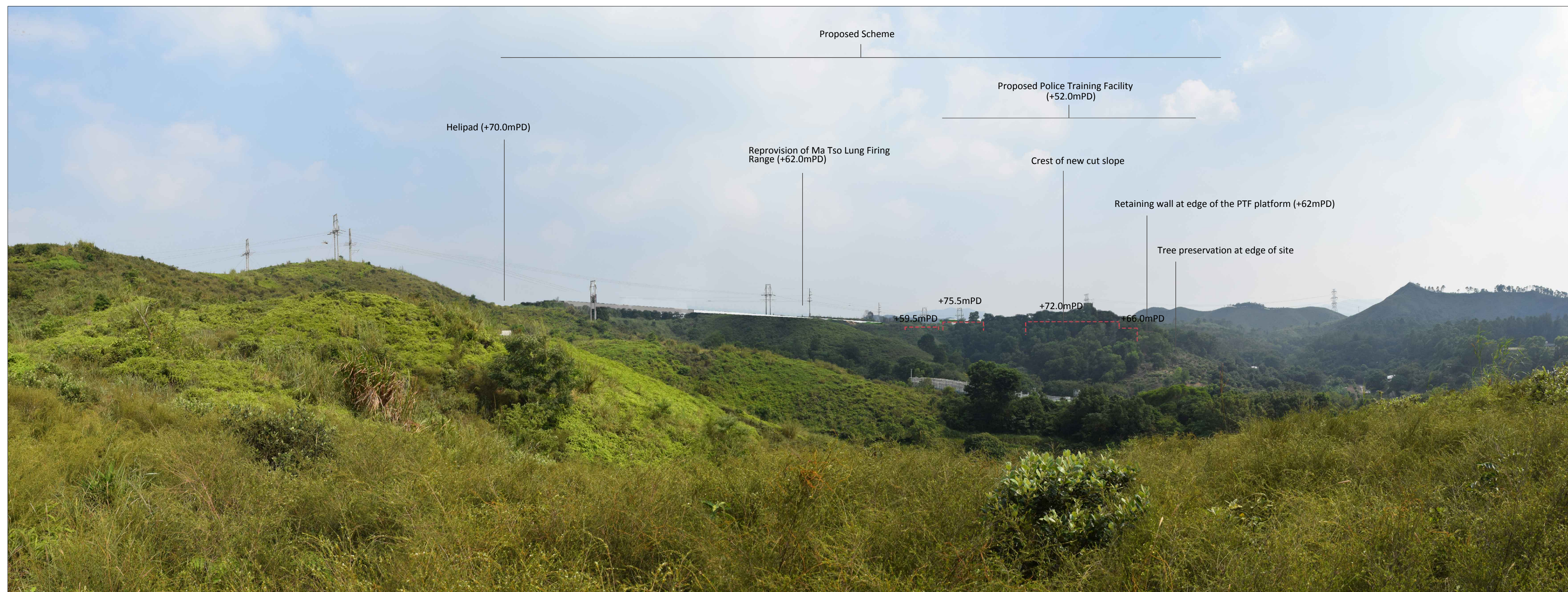
Title
 LANDSCAPE AND VISUAL MITIGATION
 MEASURES - PHOTOMONTAGE

Designed	KC	Eng check	MT
Drawn	CCH	Coordination	LL
Dwg check	KC	Approved	SHC
Scale at A1	N.T.S.	Status	PRE
		Rev	P1

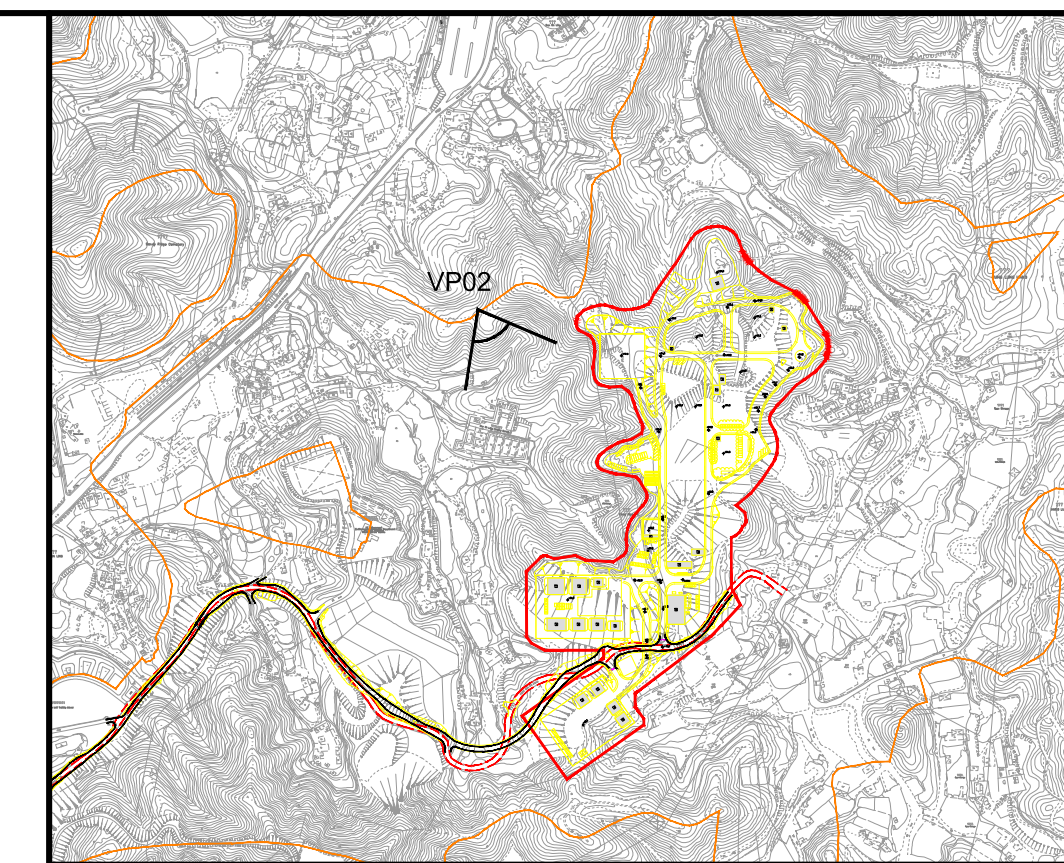
Drawing Number
 FIGURE 10-40



Vantage Point 02: View looking south east for pedestrians using hill top footpath by grave sites (VSR1.2) (Existing Situation)



Vantage Point 02: View looking south east for pedestrians using hill top footpath by grave sites (VSR1.2) (Day 1 with no mitigation measures)



LOCATION PLAN
N.T.S.


Vantage Point 02 (VP02)
 Vantage Point Elevation: +53.4mPD
 Viewing distance: 100m
 Maximum Height of Proposed Scheme: +75.5mPD

Rev	Date	Drawn	Description	Ch'k'd	App'd
P1	SEP 15	CCH	FIRST ISSUE	MT	SHC



20/F AIA Kowloon Tower
 Landmark East
 100 How Ming Street
 Kwun Tong, Kowloon
 Hong Kong
 T +852 2626 5757
 F +852 2627 1823
 W www.mottmac.com.hk

Client



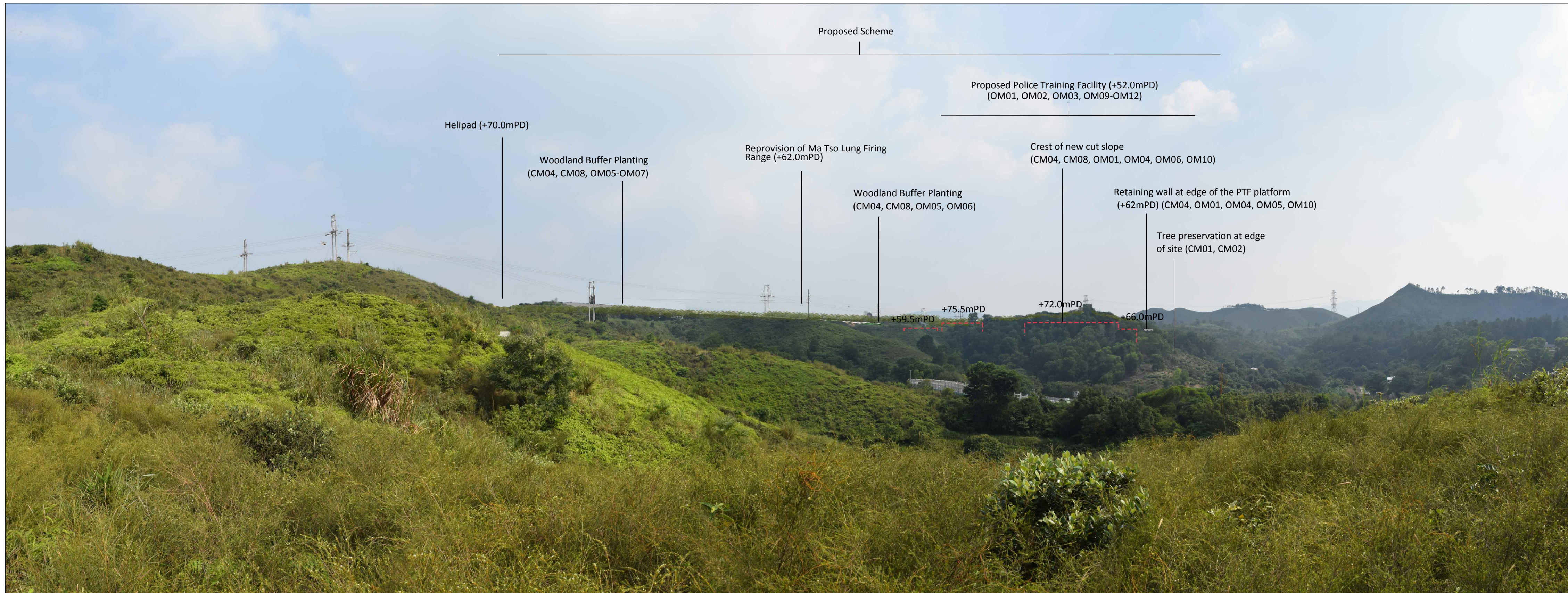
CIVIL ENGINEERING
AND DEVELOPMENT
DEPARTMENT

Project
 AGREEMENT NO. CE31 / 2014(CE)
 ENGINEERING STUDY FOR POLICE
 FACILITIES IN KONG NGA PO -
 FEASIBILITY STUDY

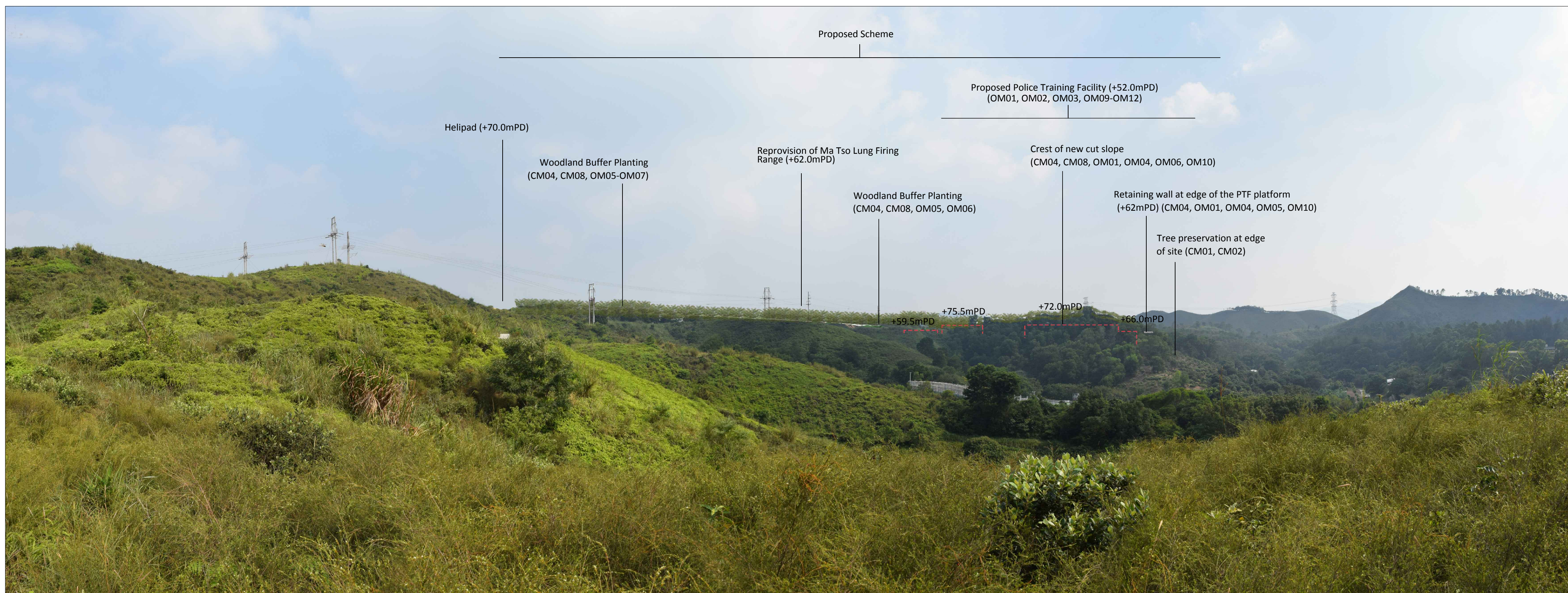
Title
 LANDSCAPE AND VISUAL MITIGATION
 MEASURES - PHOTOMONTAGE

Designed	KC	Eng check	MT
Drawn	CCH	Coordination	LL
Dwg check	KC	Approved	SHC
Scale at A1	N.T.S.	Status	PRE
		Rev	P1

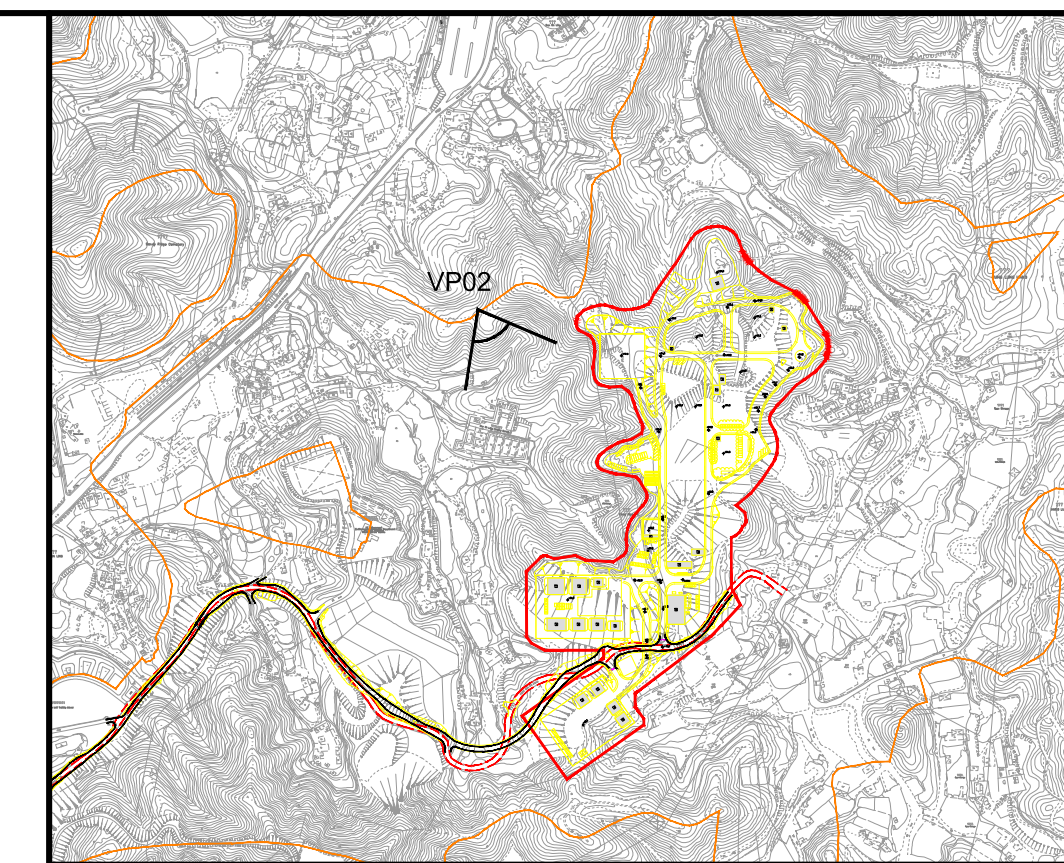
Drawing Number
 FIGURE 10-41



Vantage Point 02: View looking south east for pedestrians using hill top footpath by grave sites (VSR1.2) (Day 1 with mitigation measures)



Vantage Point 02: View looking south east for pedestrians using hill top footpath by grave sites (VSR1.2) (Year 10 with mitigation measures)



LOCATION PLAN
N.T.S.

Vantage Point 02 (VP02)
Vantage Point Elevation: +53.4mPD
Viewing distance: 100m
Maximum Height of Proposed Scheme: +75.5mPD

Rev	Date	Drawn	Description	Ch'k'd	App'd
P1	SEP 15	CCH	FIRST ISSUE	MT	SHC



20/F AIA Kowloon Tower
Landmark East
100 How Ming Street
Kwun Tong, Kowloon
Hong Kong
T +852 2626 5757
F +852 2627 1823
www.motmac.com.hk

Client
CEDD CIVIL ENGINEERING AND DEVELOPMENT DEPARTMENT

Project
AGREEMENT NO. CE31 / 2014(CE)
ENGINEERING STUDY FOR POLICE FACILITIES IN KONG NGA PO - FEASIBILITY STUDY

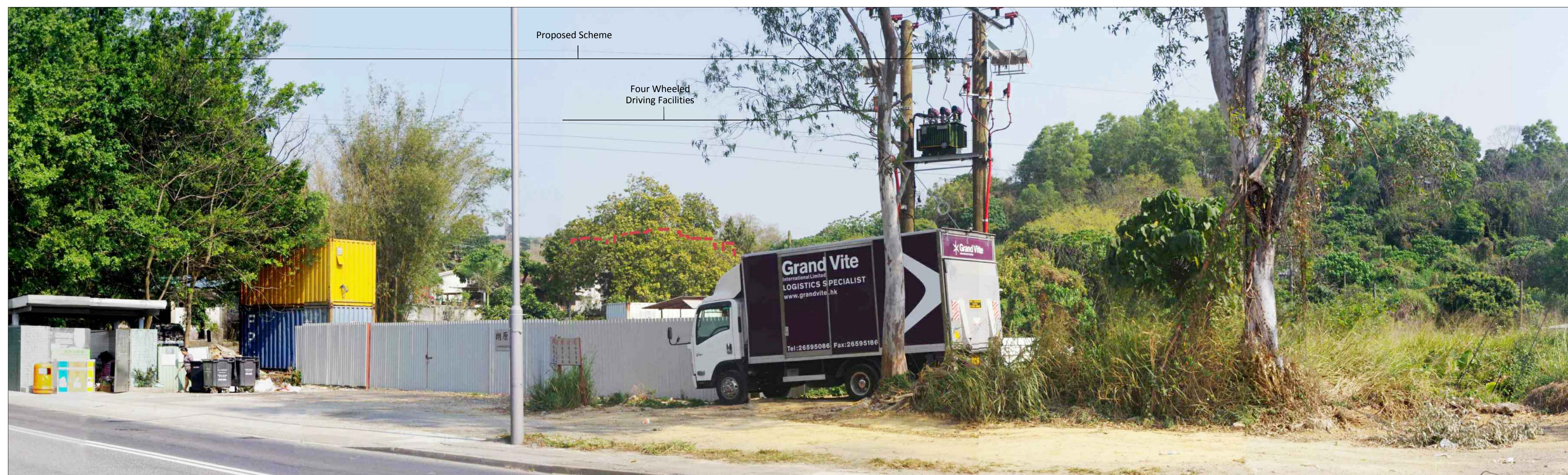
Title
LANDSCAPE AND VISUAL MITIGATION MEASURES - PHOTOMONTAGE

Designed	KC	Eng check	MT
Drawn	CCH	Coordination	LL
Dwg check	KC	Approved	SHC
Scale at A1	N.T.S.	Status	PRE
		Rev	P1

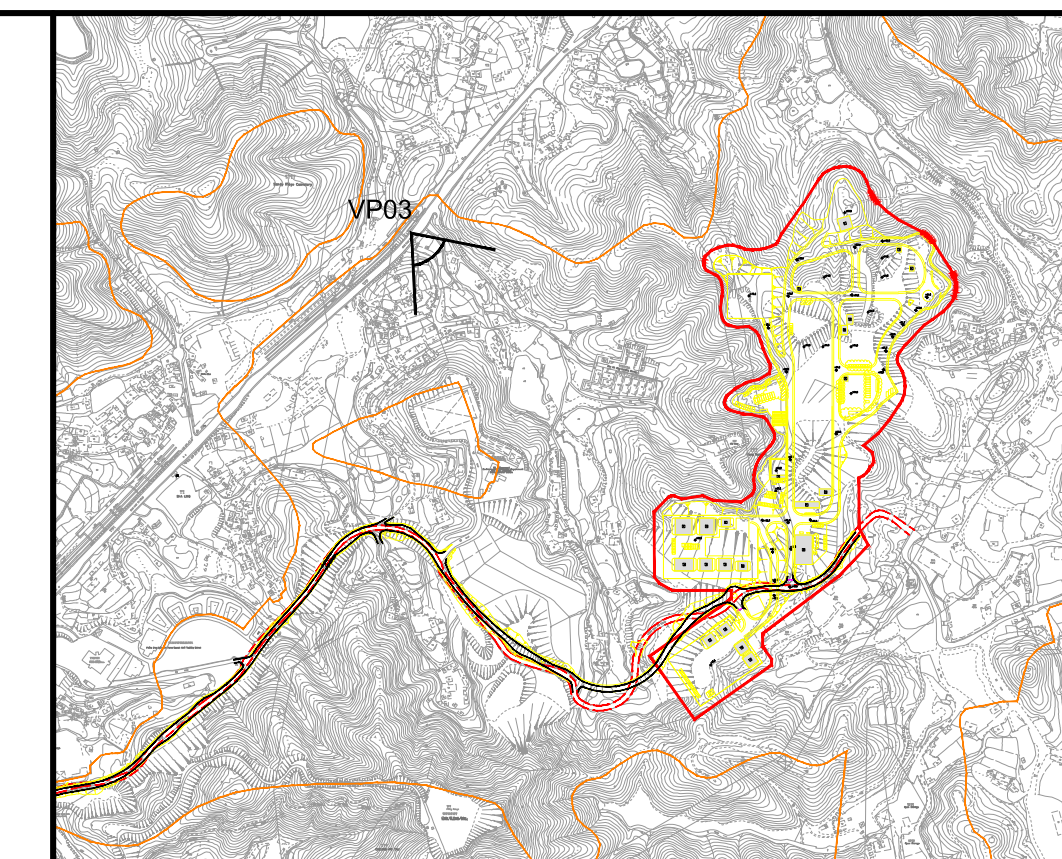
Drawing Number
FIGURE 10-42



Vantage Point 03: View looking south east for vehicle travellers on Man Kam To Road (North) (VSR1.3) (Existing Situation)



Vantage Point 03: View looking south east for vehicle travellers on Man Kam To Road (North) (VSR1.3) (Day 1 with no mitigation measures)



LOCATION PLAN
N.T.S.

Vantage Point 03 (VP03)

Vantage Point Elevation: +12.5mPD
Viewing distance: 1010m
Maximum Height of Proposed Scheme: +75.5mPD

Note:
Red dashed line shows position of proposed scheme.

P1	SEP 15	CCH	FIRST ISSUE	MT	SHC
Rev	Date	Drawn	Description	Ch'k'd	App'd



20/F AIA Kowloon Tower
Landmark East
100 How Ming Street
Kwun Tong, Kowloon
Hong Kong
T +852 2626 5757
F +852 2627 1823
www.mottmac.com.hk

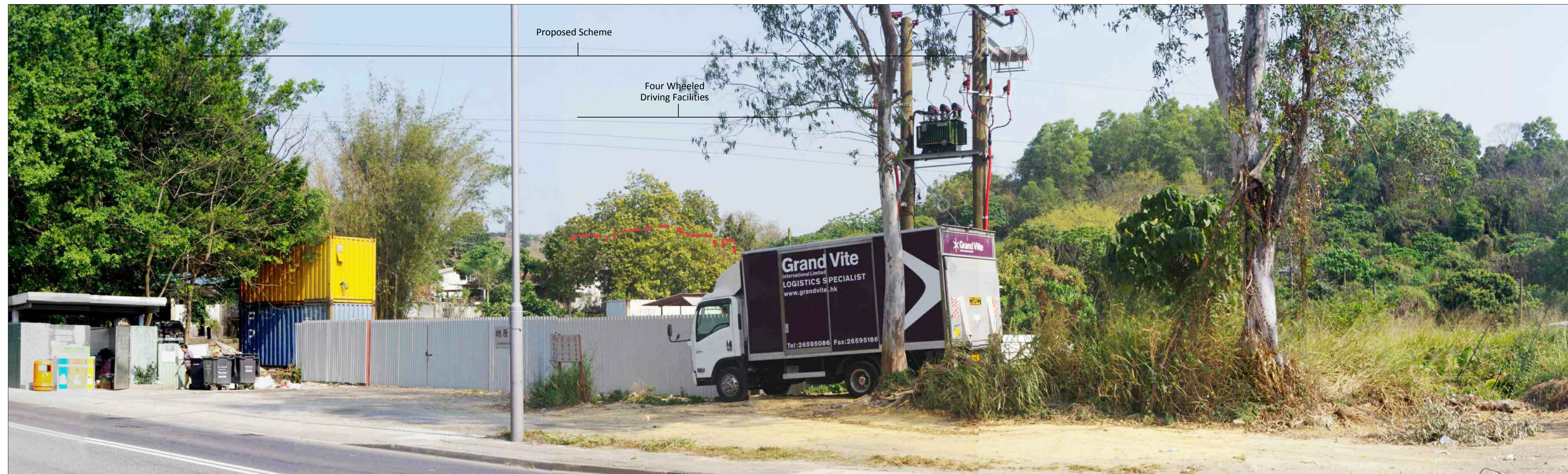
Client
CEDD CIVIL ENGINEERING AND DEVELOPMENT DEPARTMENT

Project
AGREEMENT NO. CE31 / 2014(CE)
ENGINEERING STUDY FOR POLICE FACILITIES IN KONG NGA PO - FEASIBILITY STUDY

Title
LANDSCAPE AND VISUAL MITIGATION MEASURES - PHOTOMONTAGE

Designed	KC	Eng check	MT
Drawn	CCH	Coordination	LL
Dwg check	KC	Approved	SHC
Scale at A1	Status	Rev	
N.T.S.	PRE	P1	

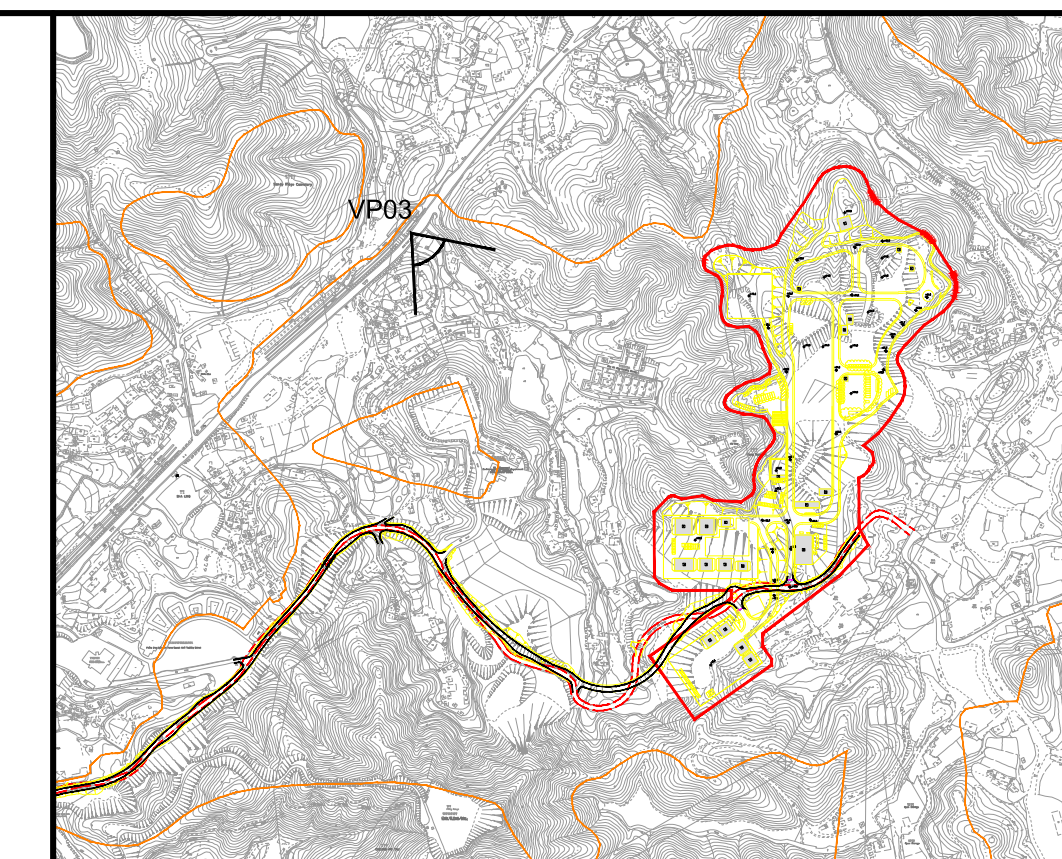
Drawing Number
FIGURE 10-43



Vantage Point 03: View looking south east for vehicle travellers on Man Kam To Road (North) (VSR1.3) (Day 1 with mitigation measures)



Vantage Point 03: View looking south east for vehicle travellers on Man Kam To Road (North) (VSR1.3) (Year 10 with mitigation measures)



LOCATION PLAN
N.T.S.

Vantage Point 03 (VP03)
 Vantage Point Elevation: +12.5mPD
 Viewing distance: 1010m
 Maximum Height of Proposed Scheme: +75.5mPD

Note:
 Red dashed line shows position of proposed scheme.

Rev	Date	Drawn	Description	Ch'k'd	App'd
P1	SEP 15	CCH	FIRST ISSUE	MT	SHC

Mott MacDonald
 20/F AIA Kowloon Tower
 Landmark East
 100 How Ming Street
 Kwun Tong, Kowloon
 Hong Kong
 T +852 2626 5757
 F +852 2627 1823
 www.mottmac.com.hk

Client
CEDD
 CIVIL ENGINEERING
 AND DEVELOPMENT
 DEPARTMENT

Project
 AGREEMENT NO. CE31 / 2014(CE)
 ENGINEERING STUDY FOR POLICE
 FACILITIES IN KONG NGA PO -
 FEASIBILITY STUDY

Title
 LANDSCAPE AND VISUAL MITIGATION
 MEASURES - PHOTOMONTAGE

Designed	KC	Eng check	MT
Drawn	CCH	Coordination	LL
Dwg check	KC	Approved	SHC
Scale at A1	N.T.S.	Status	PRE
		Rev	P1

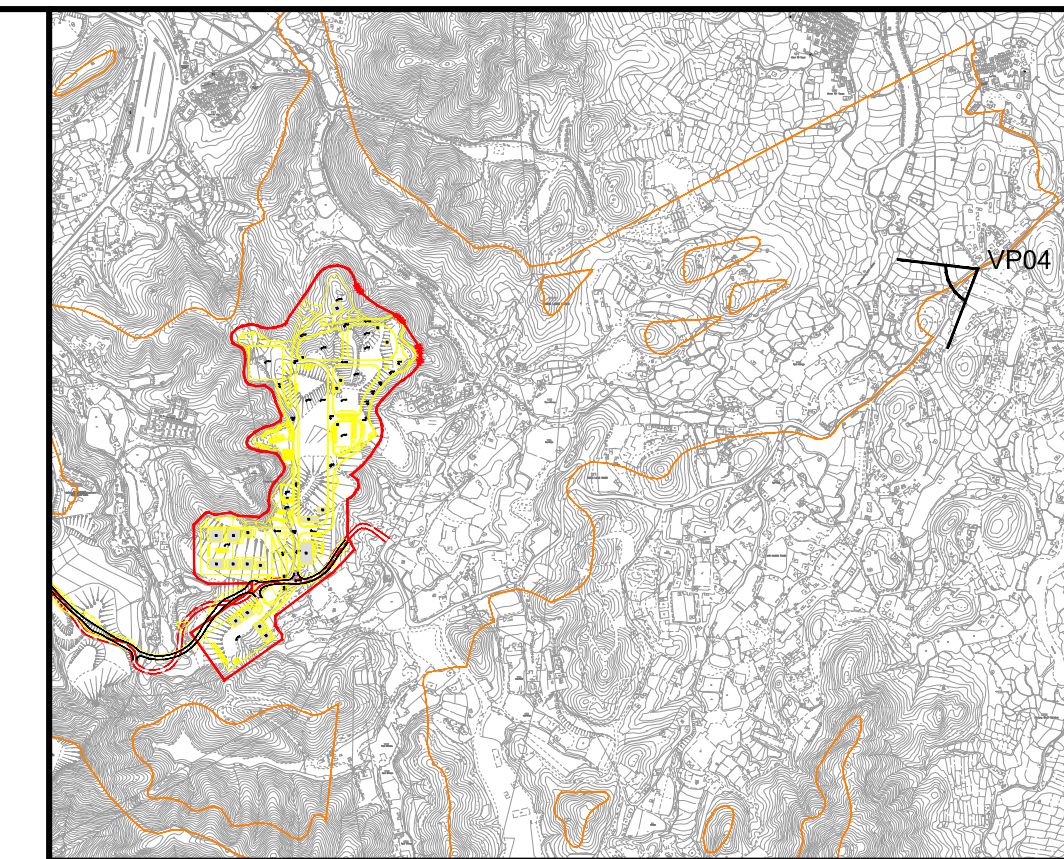
Drawing Number
FIGURE 10-44



Vantage Point 04: View looking west for agricultural workers in fields of the Ping Yuen River Valley (VSR2.3) (Existing Situation)



Vantage Point 04: View looking west for agricultural workers in fields of the Ping Yuen River Valley (VSR2.3) (Day 1 with no mitigation measures)



LOCATION PLAN
N.T.S.

Vantage Point 04 (VP04)
Vantage Point Elevation: +11.9mPD
Viewing distance: 1260m
Maximum Height of Proposed Scheme: +75.5mPD

P1	SEP 15	CCH	FIRST ISSUE	MT	SHC
Rev	Date	Drawn	Description	Ch'k'd	App'd

Mott MacDonald

20/F AIA Kowloon Tower
Landmark East
100 How Ming Street
Kwun Tong, Kowloon
Hong Kong
T +852 2626 5757
F +852 2627 1823
www.mottmac.com.hk

Client

CEDD CIVIL ENGINEERING AND DEVELOPMENT DEPARTMENT

Project
AGREEMENT NO. CE31 / 2014(CE)
ENGINEERING STUDY FOR POLICE FACILITIES IN KONG NGA PO - FEASIBILITY STUDY

Title
LANDSCAPE AND VISUAL MITIGATION MEASURES - PHOTOMONTAGE

Designed	KC	Eng check	MT	
Drawn	CCH	Coordination	LL	
Dwg check	KC	Approved	SHC	
Scale at A1	N.T.S.	Status	PRE	Rev
				P1

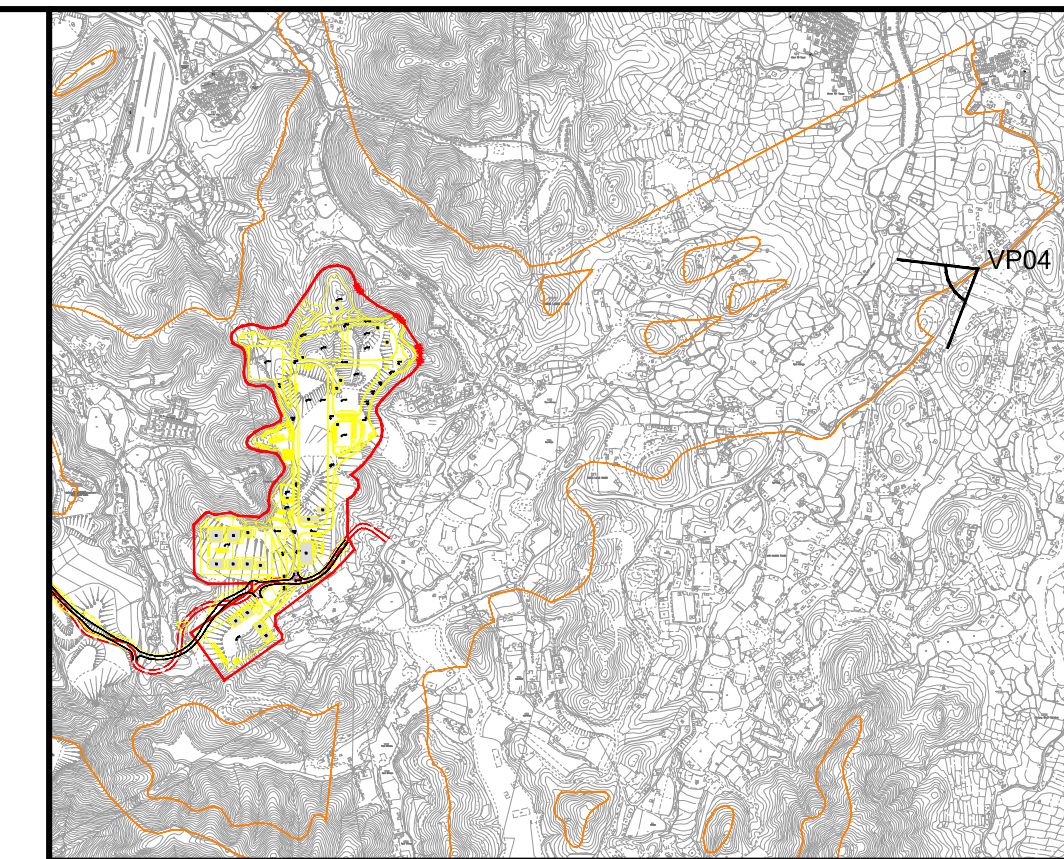
Drawing Number
FIGURE 10-45



Vantage Point 04: View looking west for agricultural workers in fields of the Ping Yuen River Valley (VSR2.3) (Day 1 with mitigation measures)



Vantage Point 04: View looking west for agricultural workers in fields of the Ping Yuen River Valley (VSR2.3) (Year 10 with mitigation measures)



LOCATION PLAN
N.T.S.

Vantage Point 04 (VP04)
Vantage Point Elevation: +11.9mPD
Viewing distance: 1260m
Maximum Height of Proposed Scheme: +75.5mPD

Rev	Date	Drawn	Description	Ch'k'd	App'd
P1	SEP 15	CCH	FIRST ISSUE	MT	SHC



20/F AIA Kowloon Tower
Landmark East
100 How Ming Street
Kwun Tong, Kowloon
Hong Kong
T +852 2626 5757
F +852 2627 1823
www.mottmac.com.hk

Client
CEDD CIVIL ENGINEERING AND DEVELOPMENT DEPARTMENT

Project
AGREEMENT NO. CE31 / 2014(CE)
ENGINEERING STUDY FOR POLICE FACILITIES IN KONG NGA PO - FEASIBILITY STUDY

Title
LANDSCAPE AND VISUAL MITIGATION MEASURES - PHOTOMONTAGE

Designed	KC	Eng check	MT	
Drawn	CCH	Coordination	LL	
Dwg check	KC	Approved	SHC	
Scale at A1	N.T.S.	Status	PRE	Rev
				P1

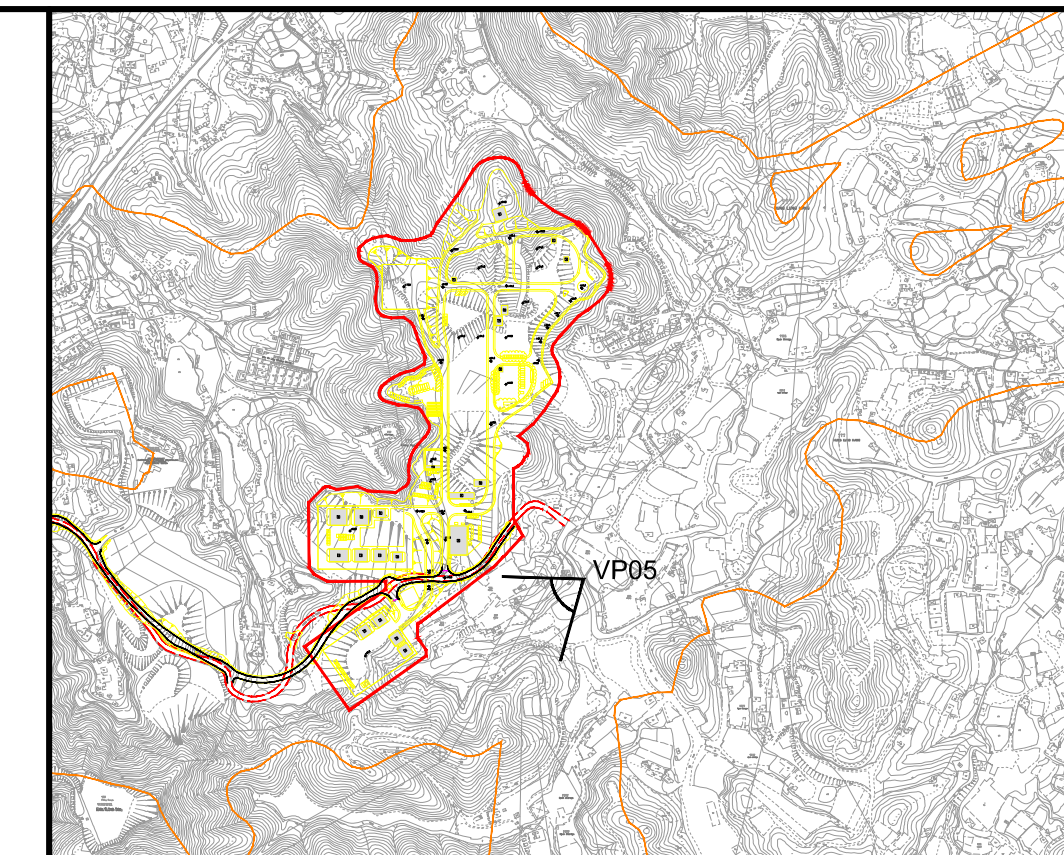
Drawing Number
FIGURE 10-46



Vantage Point 05: View looking west for vehicle travellers and pedestrians on Kong Nga Po Road (VSR2.4) (Existing Situation)



Vantage Point 05: View looking west for vehicle travellers and pedestrians on Kong Nga Po Road (VSR2.4) (Day 1 with no mitigation measures)




LOCATION PLAN
N.T.S.

Vantage Point 05 (VP05)
 Vantage Point Elevation: +27.1mPD
 Viewing distance: 302m
 Maximum Height of Proposed Scheme: +75.5mPD

Rev	Date	Drawn	Description	Ch'k'd	App'd
P1	SEP 15	CCH	FIRST ISSUE	MT	SHC



20/F AIA Kowloon Tower
 Landmark East
 100 How Ming Street
 Kwun Tong, Kowloon
 Hong Kong
 T +852 2626 5757
 F +852 2627 1823
 W www.mottmac.com.hk

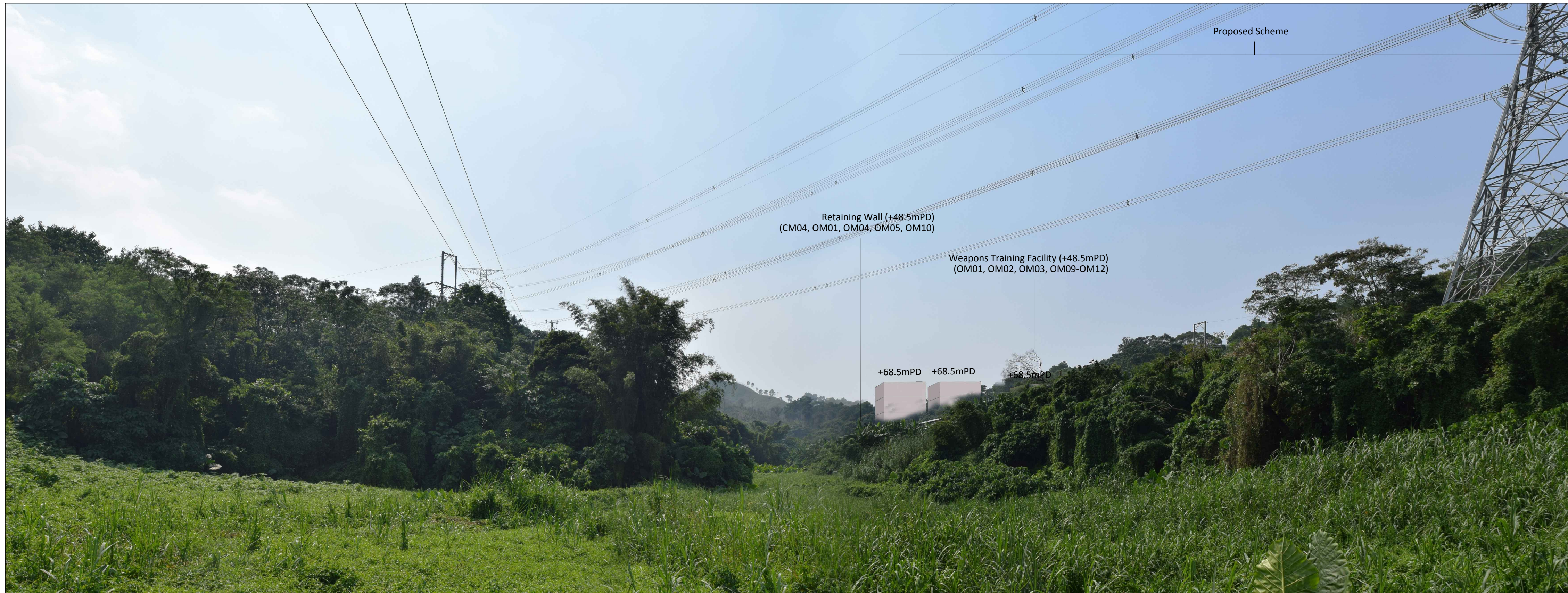
Client
 CIVIL ENGINEERING AND DEVELOPMENT DEPARTMENT

Project
 AGREEMENT NO. CE31 / 2014(CE)
 ENGINEERING STUDY FOR POLICE FACILITIES IN KONG NGA PO - FEASIBILITY STUDY

Title
 LANDSCAPE AND VISUAL MITIGATION MEASURES - PHOTOMONTAGE

Designed	KC	Eng check	MT	
Drawn	CCH	Coordination	LL	
Dwg check	KC	Approved	SHC	
Scale at A1	N.T.S.	Status	PRE	Rev
				P1

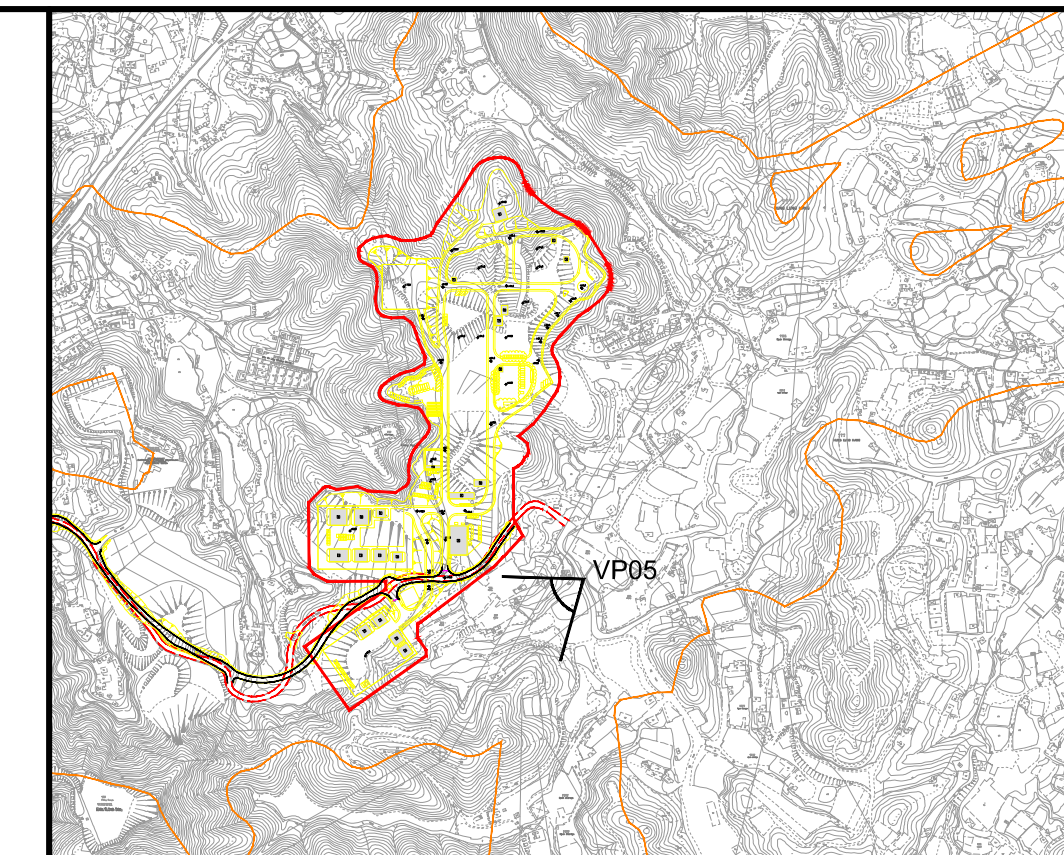
Drawing Number
 FIGURE 10-47



Vantage Point 05: View looking west for vehicle travellers and pedestrians on Kong Nga Po Road (VSR2.4) (Day 1 with mitigation measures)



Vantage Point 05: View looking west for vehicle travellers and pedestrians on Kong Nga Po Road (VSR2.4) (Year 10 with mitigation measures)



LOCATION PLAN
N.T.S.

Vantage Point 05 (VP05)
Vantage Point Elevation: +27.1mPD
Viewing distance: 302m
Maximum Height of Proposed Scheme: +75.5mPD

Rev	Date	Drawn	Description	Ch'k'd	App'd
P1	SEP 15	CCH	FIRST ISSUE	MT	SHC



20/F AIA Kowloon Tower
Landmark East
100 How Ming Street
Kwun Tong, Kowloon
Hong Kong
T +852 2626 5757
F +852 2627 1823
www.mottmac.com.hk

Client
CEDD CIVIL ENGINEERING AND DEVELOPMENT DEPARTMENT

Project
AGREEMENT NO. CE31 / 2014(CE)
ENGINEERING STUDY FOR POLICE FACILITIES IN KONG NGA PO - FEASIBILITY STUDY

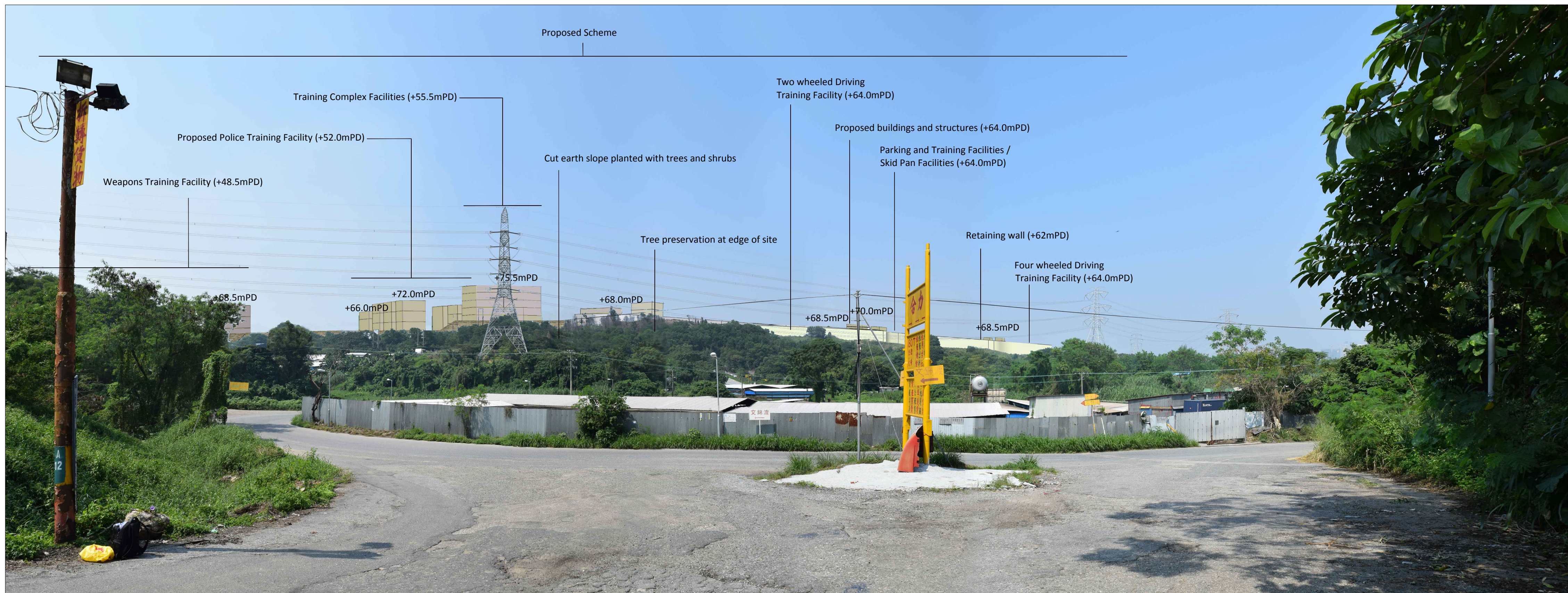
Title
LANDSCAPE AND VISUAL MITIGATION MEASURES - PHOTOMONTAGE

Designed	KC	Eng check	MT
Drawn	CCH	Coordination	LL
Dwg check	KC	Approved	SHC
Scale at A1	N.T.S.	Status	PRE
		Rev	P1

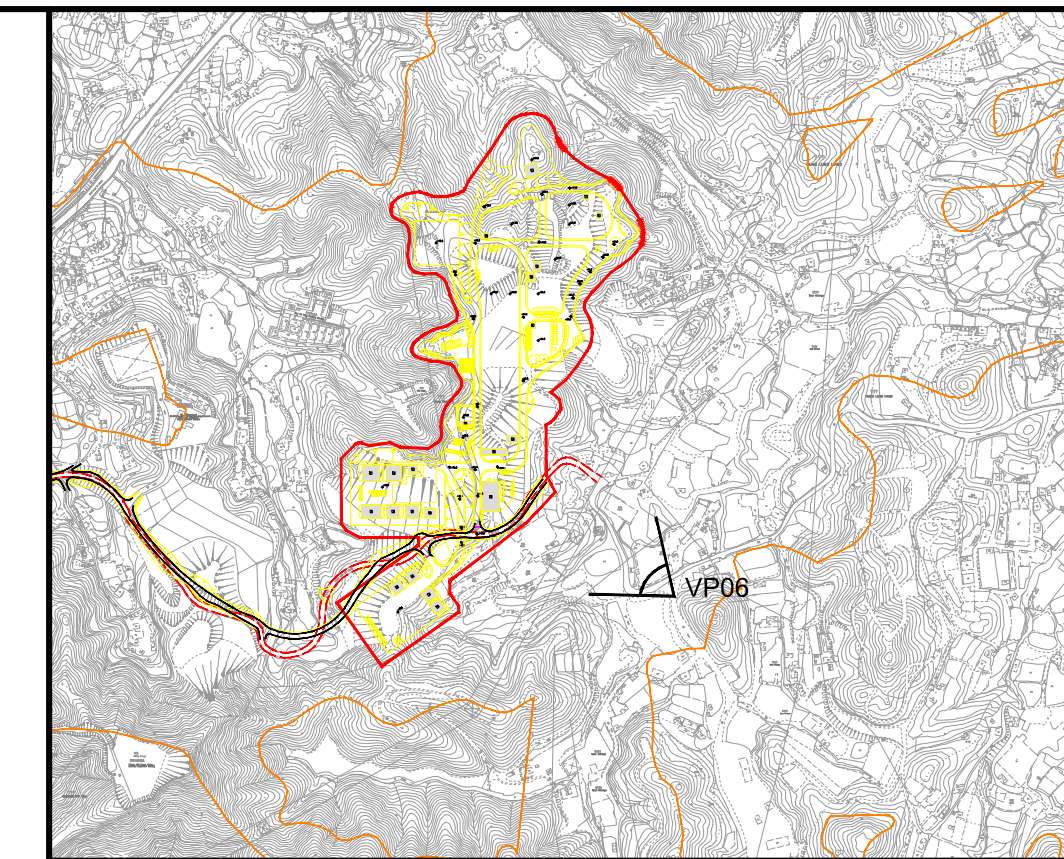
Drawing Number
FIGURE 10-48



Vantage Point 06: View looking north west for Vehicle travellers on road to south of Kong Nga Po Road (VSR2.5) (Existing Situation)



Vantage Point 06: View looking north west for Vehicle travellers on road to south of Kong Nga Po Road (VSR2.5) (Day 1 with no mitigation measures)



LOCATION PLAN
N.T.S.

Vantage Point 06 (VP06)
Vantage Point Elevation: +26.4mPD
Viewing distance: 200m
Maximum Height of Proposed Scheme: +75.5mPD

Rev	Date	Drawn	Description	Ch'k'd	App'd
P1	SEP 15	CCH	FIRST ISSUE	MT	SHC



20/F AIA Kowloon Tower
Landmark East
100 How Ming Street
Kwun Tong, Kowloon
Hong Kong
T +852 2626 5757
F +852 2627 1823
W www.mottmac.com.hk

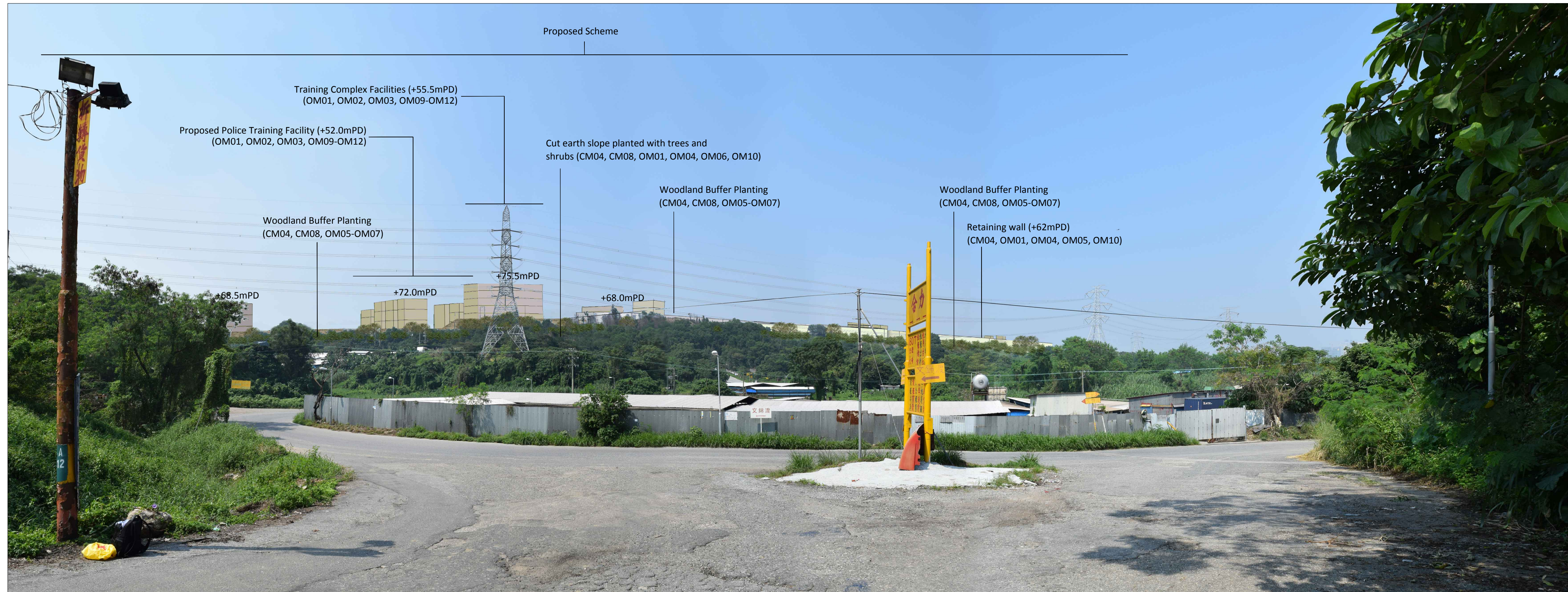
Client		CIVIL ENGINEERING AND DEVELOPMENT DEPARTMENT
--------	--	--

Project
AGREEMENT NO. CE31 / 2014(CE)
ENGINEERING STUDY FOR POLICE
FACILITIES IN KONG NGA PO -
FEASIBILITY STUDY

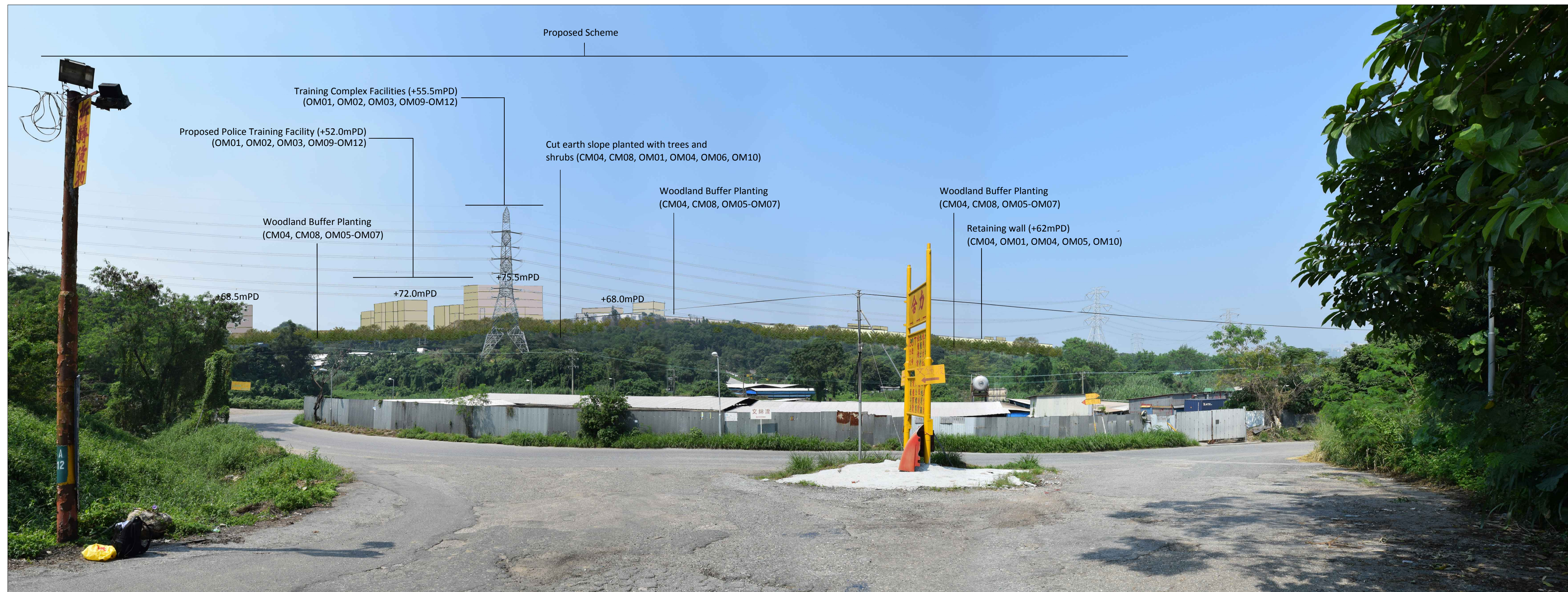
Title
LANDSCAPE AND VISUAL MITIGATION
MEASURES - PHOTOMONTAGE

Designed	KC	Eng check	MT
Drawn	CCH	Coordination	LL
Dwg check	KC	Approved	SHC
Scale at A1	N.T.S.	Status	PRE
		Rev	P1

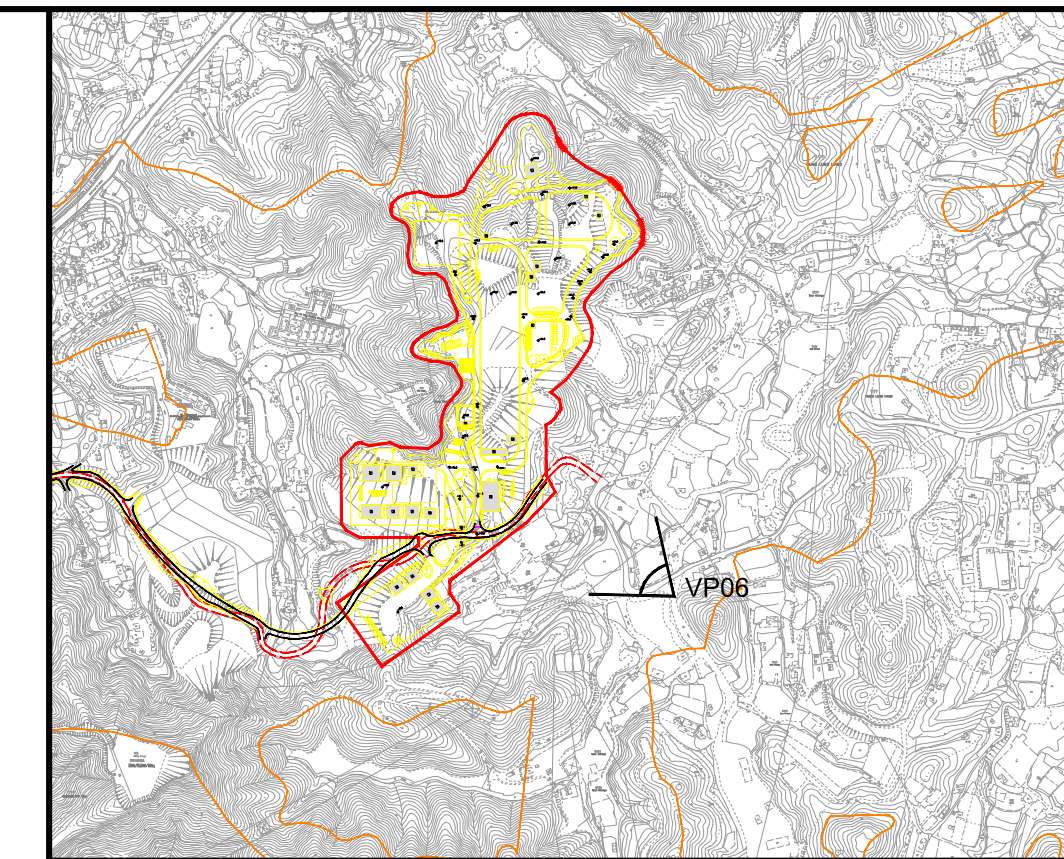
Drawing Number
FIGURE 10-49



Vantage Point 06: View looking north west for Vehicle travellers on road to south of Kong Nga Po Road (VSR2.5) (Day 1 with mitigation measures)



Vantage Point 06: View looking north west for Vehicle travellers on road to south of Kong Nga Po Road (VSR2.5) (Year 10 with mitigation measures)



LOCATION PLAN
N.T.S.

Vantage Point 06 (VP06)
Vantage Point Elevation: +26.4mPD
Viewing distance: 200m
Maximum Height of Proposed Scheme: +75.5mPD

Rev	Date	Drawn	Description	Ch'k'd	App'd
P1	SEP 15	CCH	FIRST ISSUE	MT	SHC

Mott MacDonald
 20/F AIA Kowloon Tower
 Landmark East
 100 How Ming Street
 Kwun Tong, Kowloon
 Hong Kong
 T +852 2626 5757
 F +852 2627 1823
 www.mottmac.com.hk

Client
CEDD
 CIVIL ENGINEERING
 AND DEVELOPMENT
 DEPARTMENT

Project
 AGREEMENT NO. CE31 / 2014(CE)
 ENGINEERING STUDY FOR POLICE
 FACILITIES IN KONG NGA PO -
 FEASIBILITY STUDY

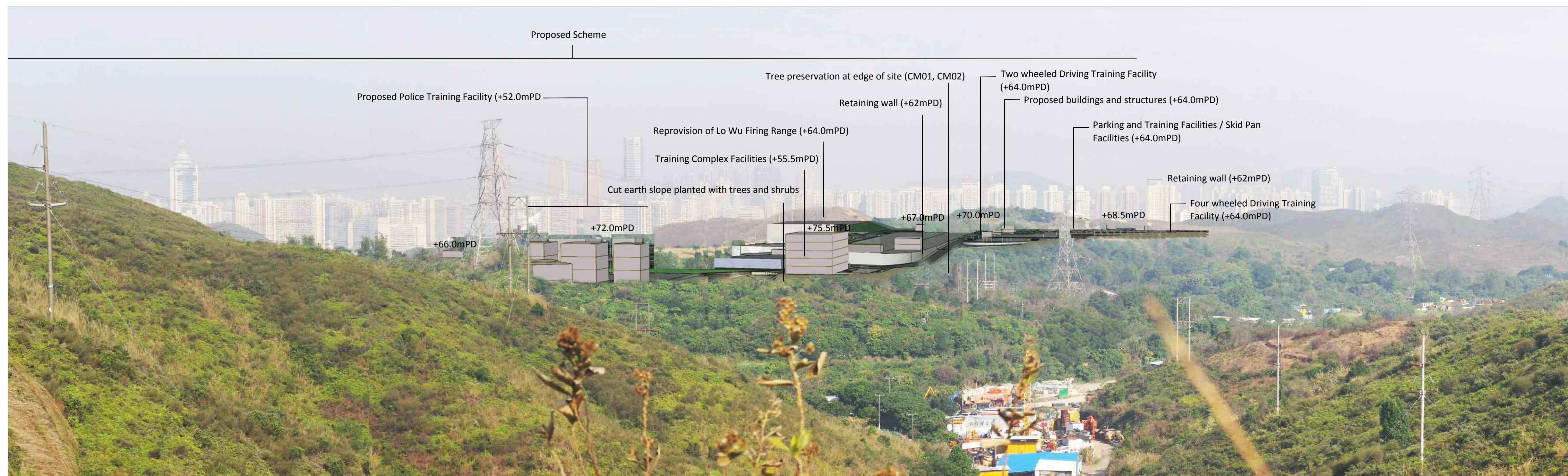
Title
 LANDSCAPE AND VISUAL MITIGATION
 MEASURES - PHOTOMONTAGE

Designed	KC	Eng check	MT
Drawn	CCH	Coordination	LL
Dwg check	KC	Approved	SHC
Scale at A1	Status	Rev	
N.T.S.	PRE	P1	

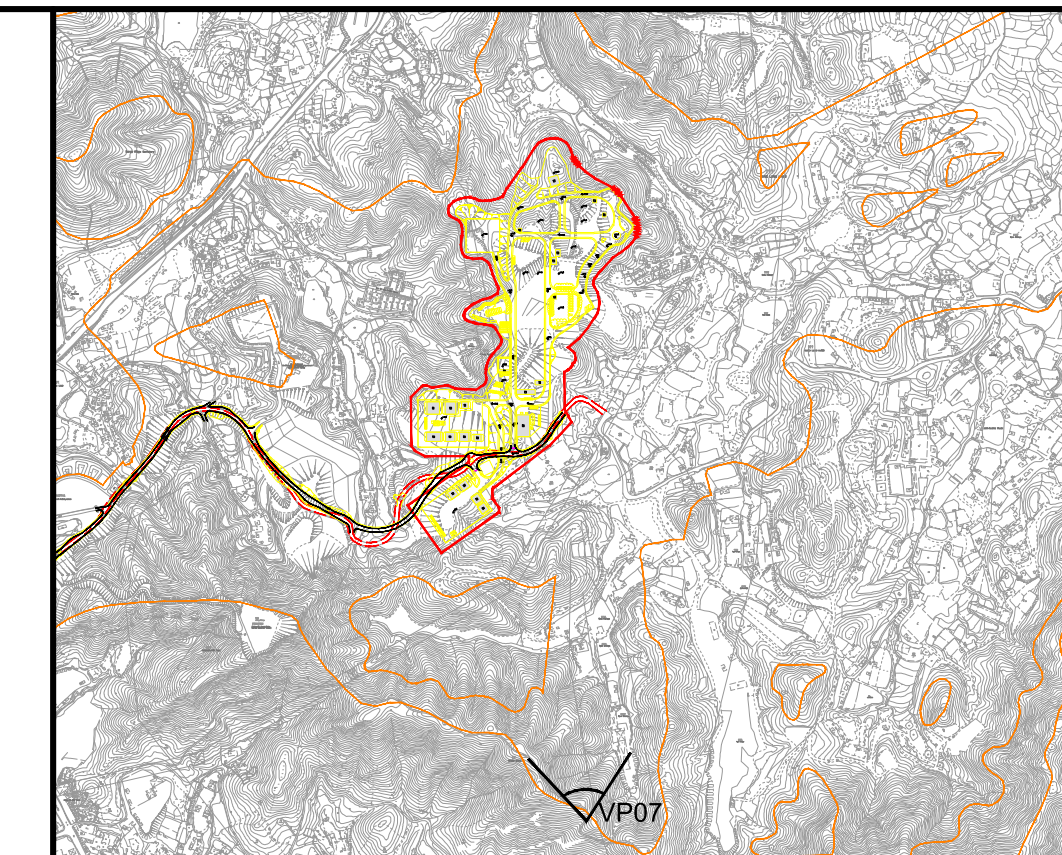
Drawing Number
FIGURE 10-50



Vantage Point 07: View looking north for trail walkers on ridgeline footpath (VSR 3.1) (Existing Situation)



Vantage Point 07: View looking north for trail walkers on ridgeline footpath (VSR 3.1) (Day 1 with no mitigation measures)



LOCATION PLAN
N.T.S.

Vantage Point 07 (VP07)
Vantage Point Elevation: +80.0mPD
Viewing distance: 890m
Maximum Height of Proposed Scheme: +75.5mPD

Rev	Date	Drawn	Description	Ch'k'd	App'd
P1	SEP 15	CCH	FIRST ISSUE	MT	SHC



20/F AIA Kowloon Tower
Landmark East
100 How Ming Street
Kwun Tong, Kowloon
Hong Kong
T +852 2828 5757
F +852 2827 1823
www.mottmac.com.hk

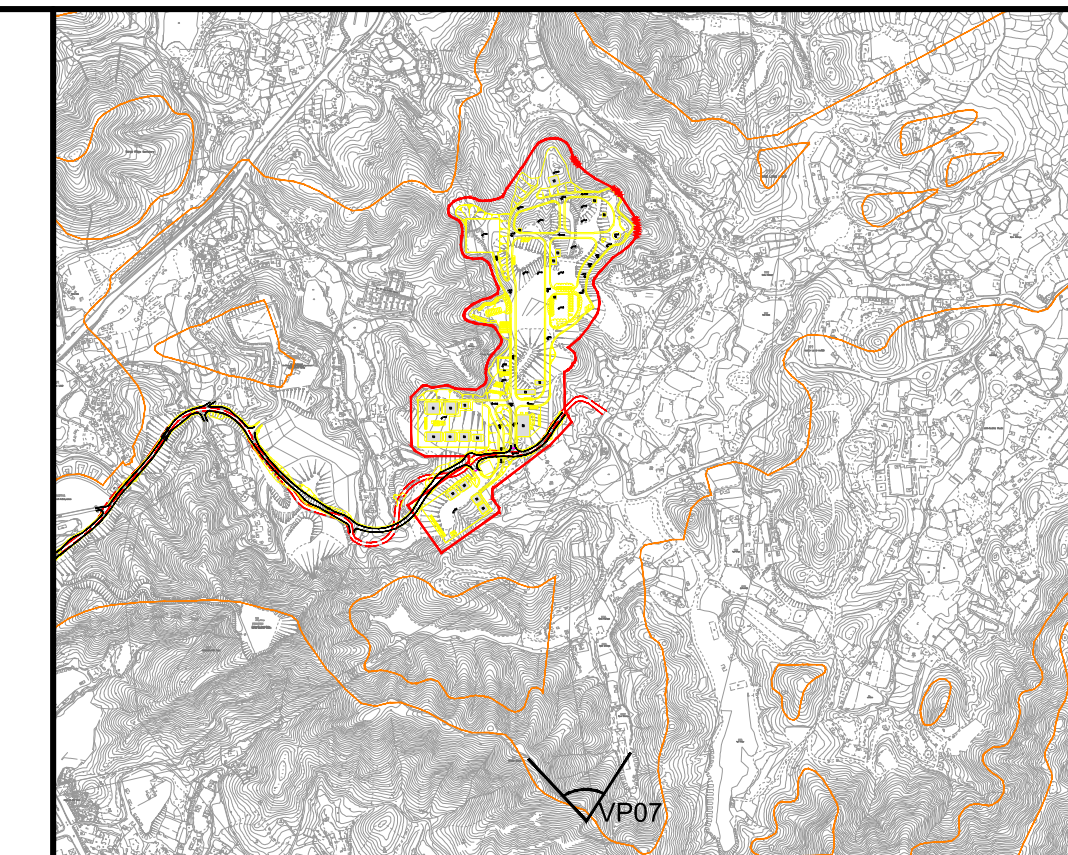
Client
CEDD CIVIL ENGINEERING AND DEVELOPMENT DEPARTMENT

Project
AGREEMENT NO. CE31 / 2014(CE)
ENGINEERING STUDY FOR POLICE FACILITIES IN KONG NGA PO - FEASIBILITY STUDY

Title
LANDSCAPE AND VISUAL MITIGATION MEASURES - PHOTOMONTAGE

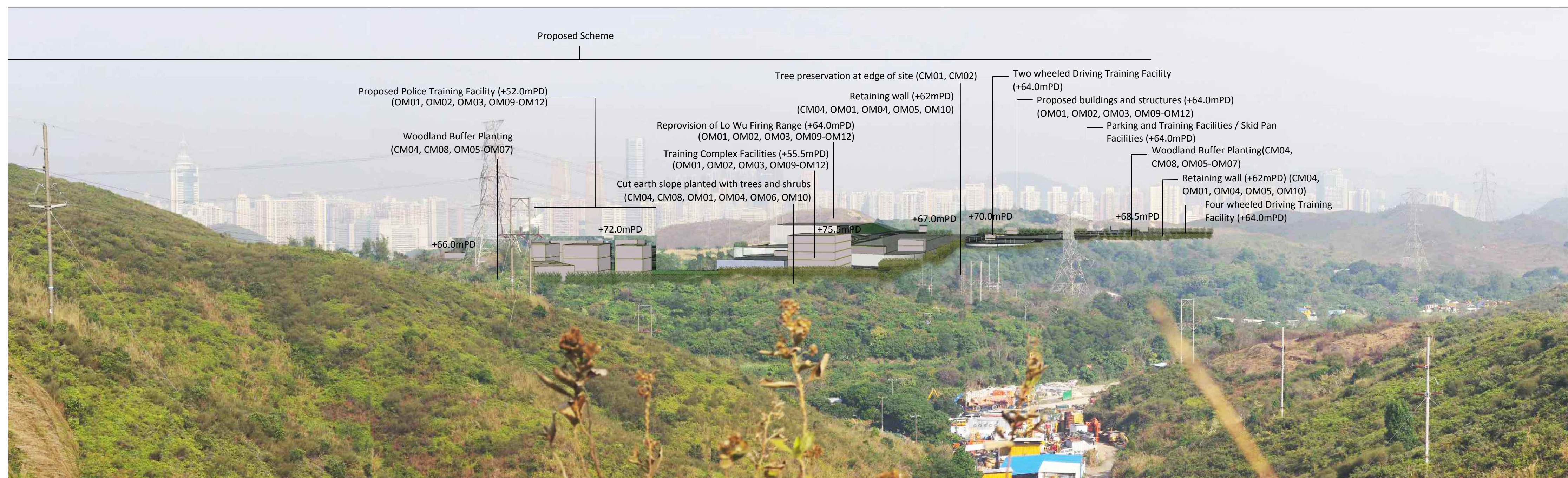
Designed	KC	Eng check	MT
Drawn	CCH	Coordination	LL
Dwg check	KC	Approved	SHC
Scale at A1	N.T.S.	Status	PRE
		Rev	P1

Drawing Number
FIGURE 10-51

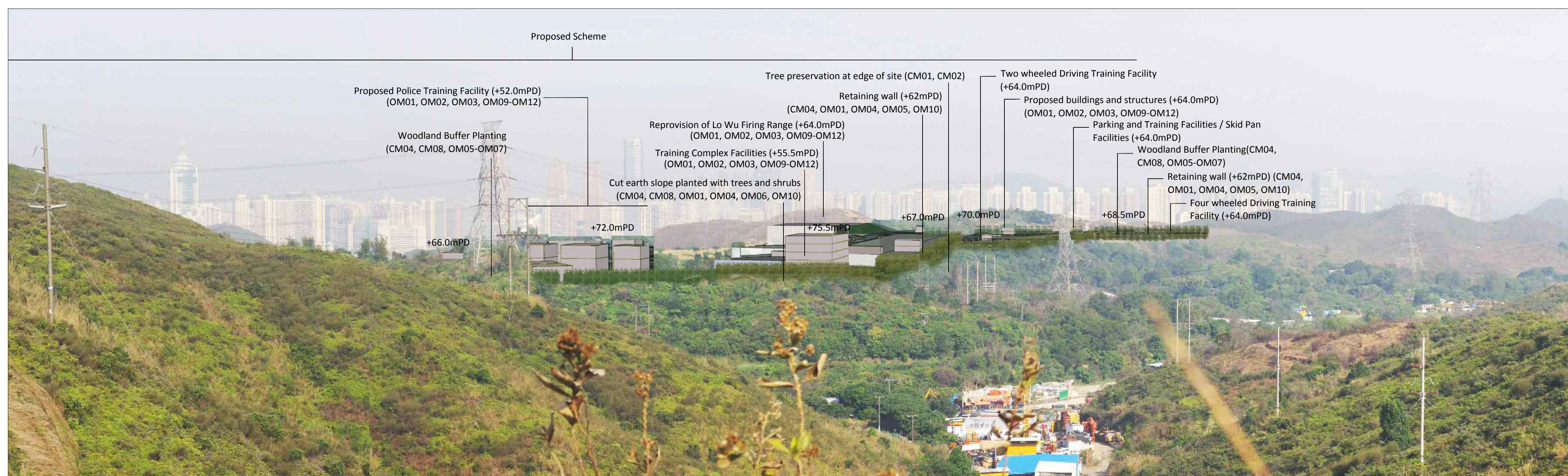


LOCATION PLAN
N.T.S.

Vantage Point 07 (VP07)
Vantage Point Elevation: +80.0mPD
Viewing distance: 890m
Maximum Height of Proposed Scheme: +75.5mPD



Vantage Point 07: View looking north for trail walkers on ridgeline footpath (VSR 3.1) (Day 1 with mitigation measures)



Vantage Point 07: View looking north for trail walkers on ridgeline footpath (VSR 3.1) (Year 10 with mitigation measures)

Rev	Date	Drawn	Description	Ch'k'd	App'd
P1	SEP 15	CCH	FIRST ISSUE	MT	SHC



20/F AIA Kowloon Tower
Landmark East
100 How Ming Street
Kwun Tong, Kowloon
Hong Kong
T +852 2828 5757
F +852 2827 1823
www.mottmac.com.hk

Client
CEDD CIVIL ENGINEERING AND DEVELOPMENT DEPARTMENT

Project
AGREEMENT NO. CE31 / 2014(CE)
ENGINEERING STUDY FOR POLICE FACILITIES IN KONG NGA PO - FEASIBILITY STUDY

Title
LANDSCAPE AND VISUAL MITIGATION MEASURES - PHOTOMONTAGE

Designed	KC	Eng check	MT
Drawn	CCH	Coordination	LL
Dwg check	KC	Approved	SHC
Scale at A1	N.T.S.	Status	PRE
		Rev	P1

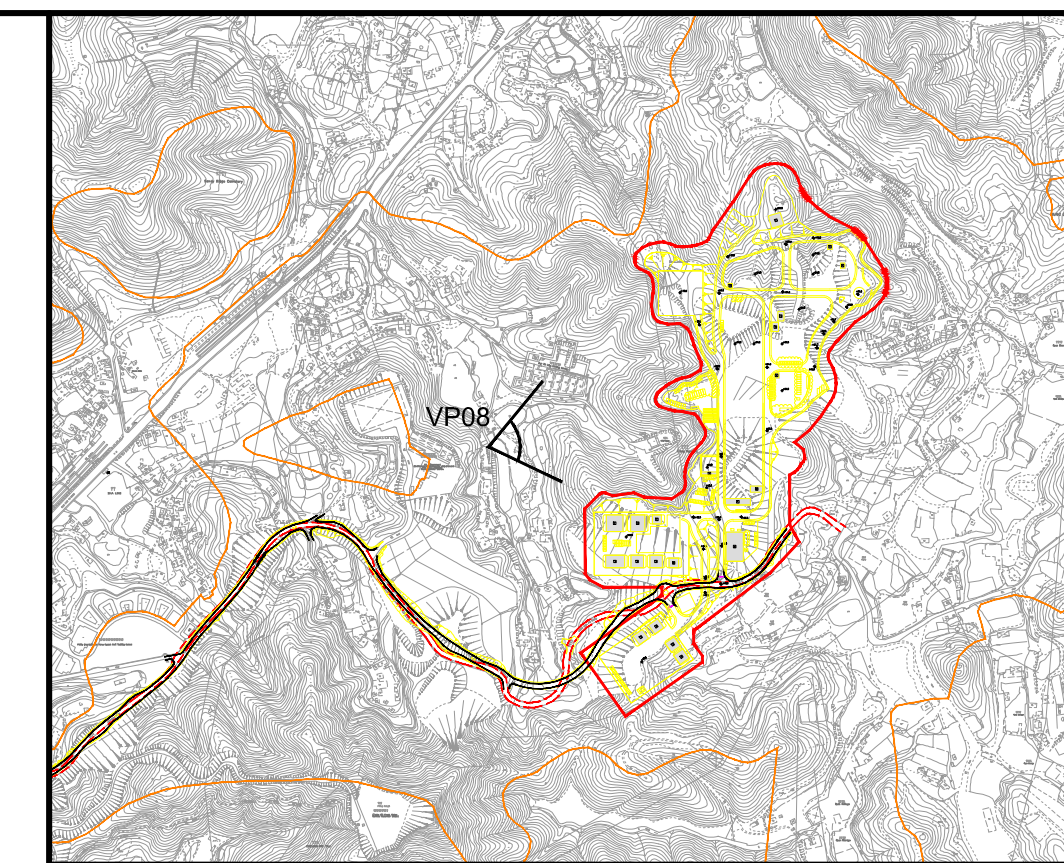
Drawing Number
FIGURE 10-52



Vantage Point 08: View looking east for vehicle travellers and pedestrians on small rural road (San Uk Ling) (VSR4.3) (Existing Situation)



Vantage Point 08: View looking east for vehicle travellers and pedestrians on small rural road (San Uk Ling) (VSR4.3) (Day 1 with no mitigation measures)



LOCATION PLAN
N.T.S.


Vantage Point 08 (VP08)
Vantage Point Elevation: +17.0mPD
Viewing distance: 290m
Maximum Height of Proposed Scheme: +75.5mPD

Note:
Red dashed line shows position of proposed scheme.

Rev	Date	Drawn	Description	Ch'k'd	App'd
P1	SEP 15	CCH	FIRST ISSUE	MT	SHC



20/F AIA Kowloon Tower
Landmark East
100 How Ming Street
Kwun Tong, Kowloon
Hong Kong
T +852 2626 5757
F +852 2627 1823
www.mottmac.com.hk

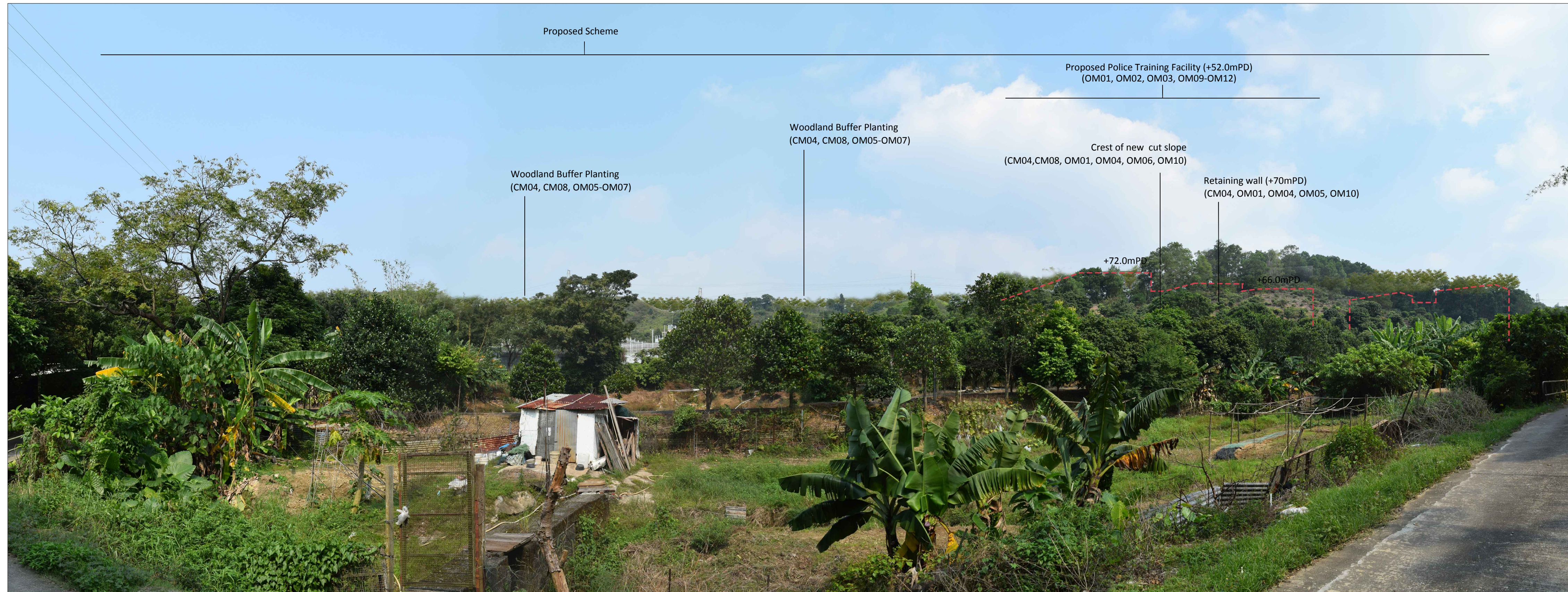
Client		CIVIL ENGINEERING AND DEVELOPMENT DEPARTMENT
--------	---	--

Project
AGREEMENT NO. CE31 / 2014(CE)
ENGINEERING STUDY FOR POLICE
FACILITIES IN KONG NGA PO -
FEASIBILITY STUDY

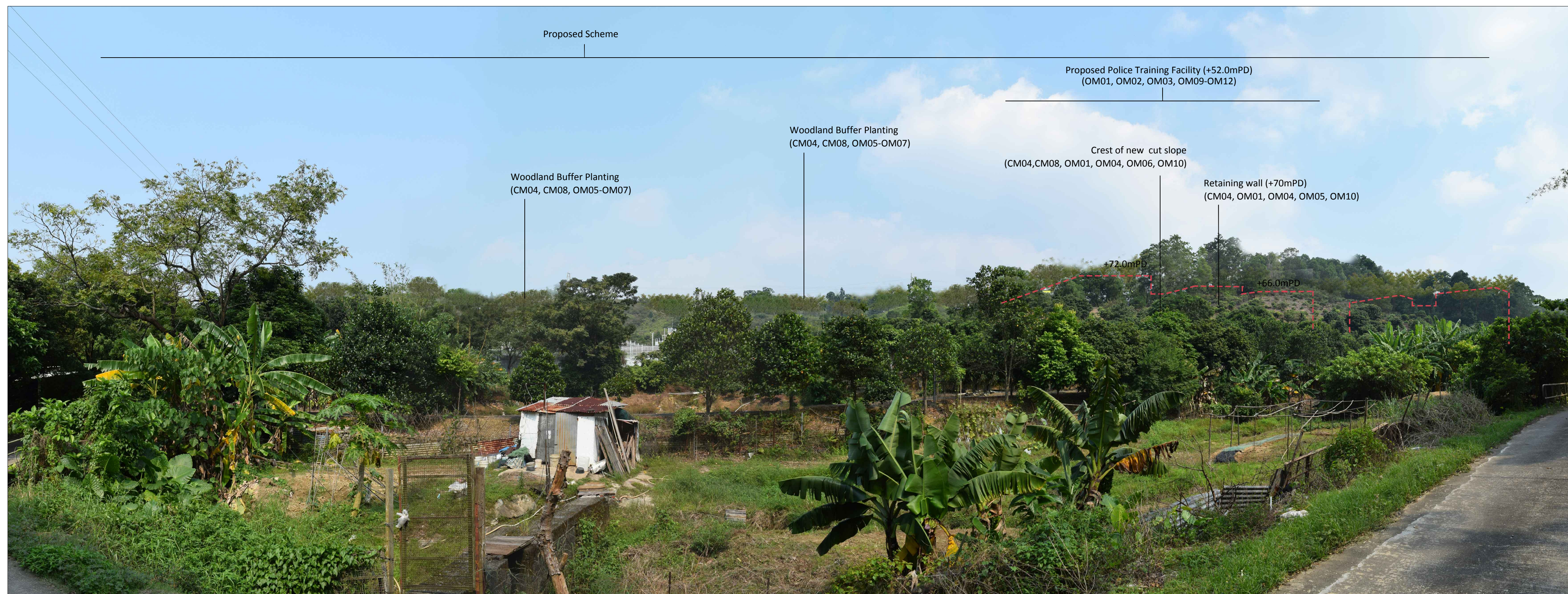
Title
LANDSCAPE AND VISUAL MITIGATION
MEASURES - PHOTOMONTAGE

Designed	KC	Eng check	MT
Drawn	CCH	Coordination	LL
Dwg check	KC	Approved	SHC
Scale at A1	N.T.S.	Status	PRE
		Rev	P1

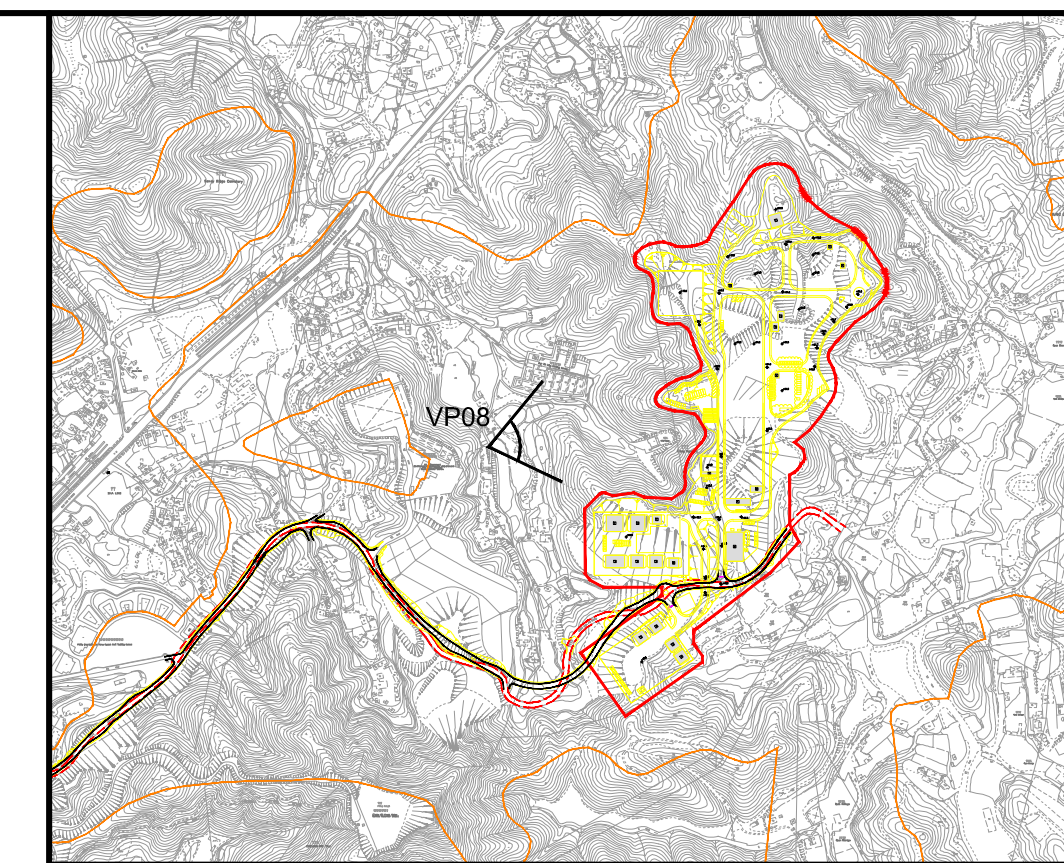
Drawing Number
FIGURE 10-53



Vantage Point 08: View looking east for vehicle travellers and pedestrians on small rural road (San Uk Ling) (VSR4.3) (Day 1 with mitigation measures)



Vantage Point 08: View looking east for vehicle travellers and pedestrians on small rural road (San Uk Ling) (VSR4.3) (Year 10 with mitigation measures)



LOCATION PLAN
N.T.S.

Vantage Point 08 (VP08)
Vantage Point Elevation: +17.0mPD
Viewing distance: 290m
Maximum Height of Proposed Scheme: +75.5mPD

Note:
Red dashed line shows position of proposed scheme.

Rev	Date	Drawn	Description	Ch'k'd	App'd
P1	SEP 15	CCH	FIRST ISSUE	MT	SHC



20/F AIA Kowloon Tower
Landmark East
100 How Ming Street
Kwun Tong, Kowloon
Hong Kong
T +852 2626 5757
F +852 2627 1823
www.mottmac.com.hk

Client
CEDD CIVIL ENGINEERING AND DEVELOPMENT DEPARTMENT

Project
AGREEMENT NO. CE31 / 2014(CE)
ENGINEERING STUDY FOR POLICE FACILITIES IN KONG NGA PO - FEASIBILITY STUDY

Title
LANDSCAPE AND VISUAL MITIGATION MEASURES - PHOTOMONTAGE

Designed	KC	Eng check	MT
Drawn	CCH	Coordination	LL
Dwg check	KC	Approved	SHC
Scale at A1	N.T.S.	Status	PRE
		Rev	P1

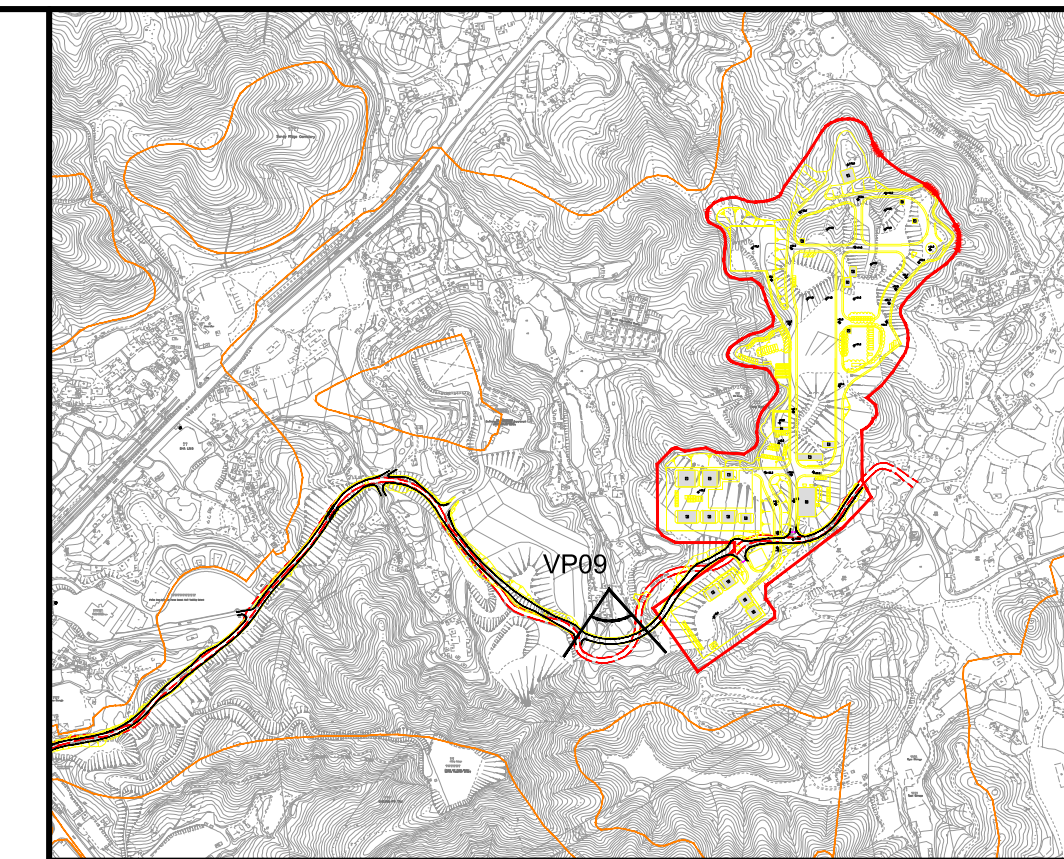
Drawing Number
FIGURE 10-54



Vantage Point 09: View looking south for residents of agricultural holding north of Kong Nga Po Road (VSR 4.5) (Existing Situation)



Vantage Point 09: View looking south for residents of agricultural holding north of Kong Nga Po Road (VSR 4.5) (Day 1 with no mitigation measures)



LOCATION PLAN
N.T.S.

Vantage Point 09 (VP09)
Vantage Point Elevation: +24.7mPD
Viewing distance: 50m
Maximum Height of Proposed Scheme: +75.5mPD

Rev	Date	Drawn	Description	Ch'k'd	App'd
P1	SEP 15	CCH	FIRST ISSUE	MT	SHC



20/F AIA Kowloon Tower
Landmark East
100 How Ming Street
Kwun Tong, Kowloon
Hong Kong
T +852 2626 5757
F +852 2627 1823
www.mottmac.com.hk

Client



CIVIL ENGINEERING
AND DEVELOPMENT
DEPARTMENT

Project

AGREEMENT NO. CE31 / 2014(CE)
ENGINEERING STUDY FOR POLICE
FACILITIES IN KONG NGA PO -
FEASIBILITY STUDY

Title

LANDSCAPE AND VISUAL MITIGATION
MEASURES - PHOTOMONTAGE

Designed	KC	Eng check	MT	
Drawn	CCH	Coordination	LL	
Dwg check	KC	Approved	SHC	
Scale at A1	N.T.S.	Status	PRE	Rev
				P1

Drawing Number

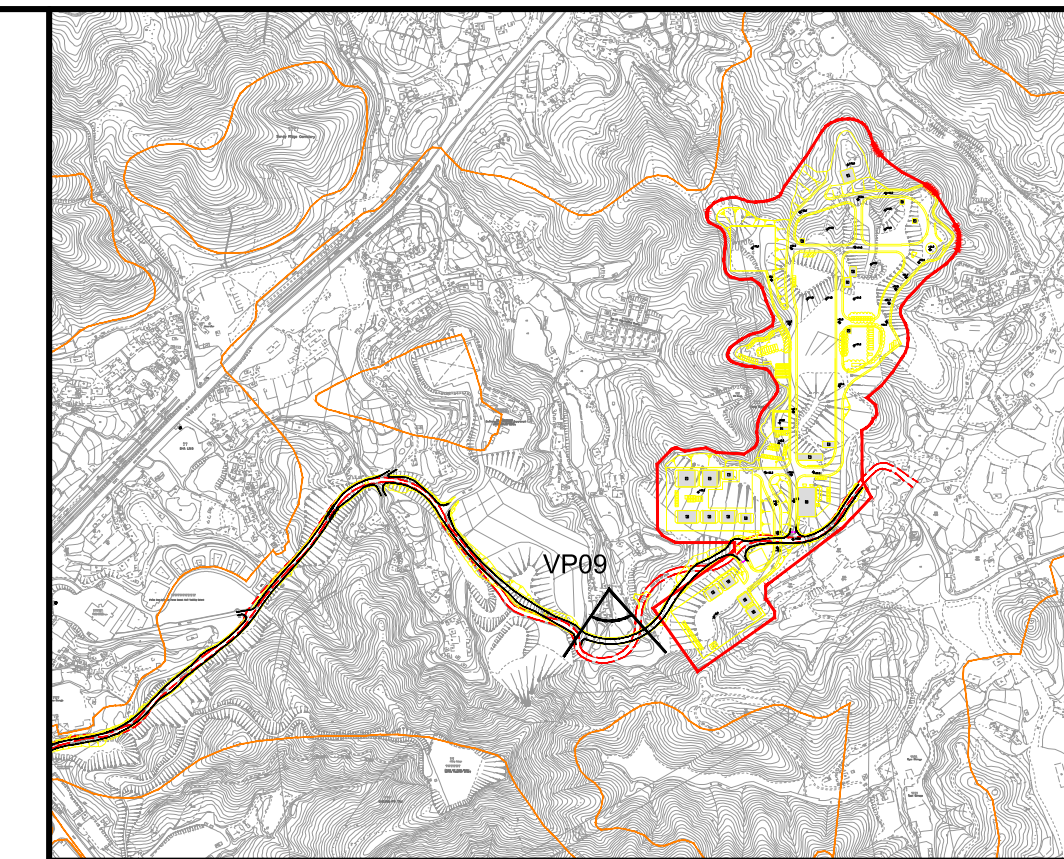
FIGURE 10-55



Vantage Point 09: View looking south for residents of agricultural holding north of Kong Nga Po Road (VSR 4.5) (Day 1 with mitigation measures)



Vantage Point 09: View looking south for residents of agricultural holding north of Kong Nga Po Road (VSR 4.5) (Year 10 with mitigation measures)



LOCATION PLAN
N.T.S.

Vantage Point 09 (VP09)

Vantage Point Elevation: +24.7mPD
Viewing distance: 50m
Maximum Height of Proposed Scheme: +75.5mPD

Rev	Date	Drawn	Description	Ch'k'd	App'd
P1	SEP 15	CCH	FIRST ISSUE	MT	SHC



20/F AIA Kowloon Tower
Landmark East
100 How Ming Street
Kwun Tong, Kowloon
Hong Kong
T +852 2626 5757
F +852 2627 1823
www.mottmac.com.hk

Client



CIVIL ENGINEERING
AND DEVELOPMENT
DEPARTMENT

Project

AGREEMENT NO. CE31 / 2014(CE)
ENGINEERING STUDY FOR POLICE
FACILITIES IN KONG NGA PO -
FEASIBILITY STUDY

Title

LANDSCAPE AND VISUAL MITIGATION
MEASURES - PHOTOMONTAGE

Designed	KC	Eng check	MT	
Drawn	CCH	Coordination	LL	
Dwg check	KC	Approved	SHC	
Scale at A1	Status		Rev	
N.T.S.	PRE		P1	

Drawing Number

FIGURE 10-56