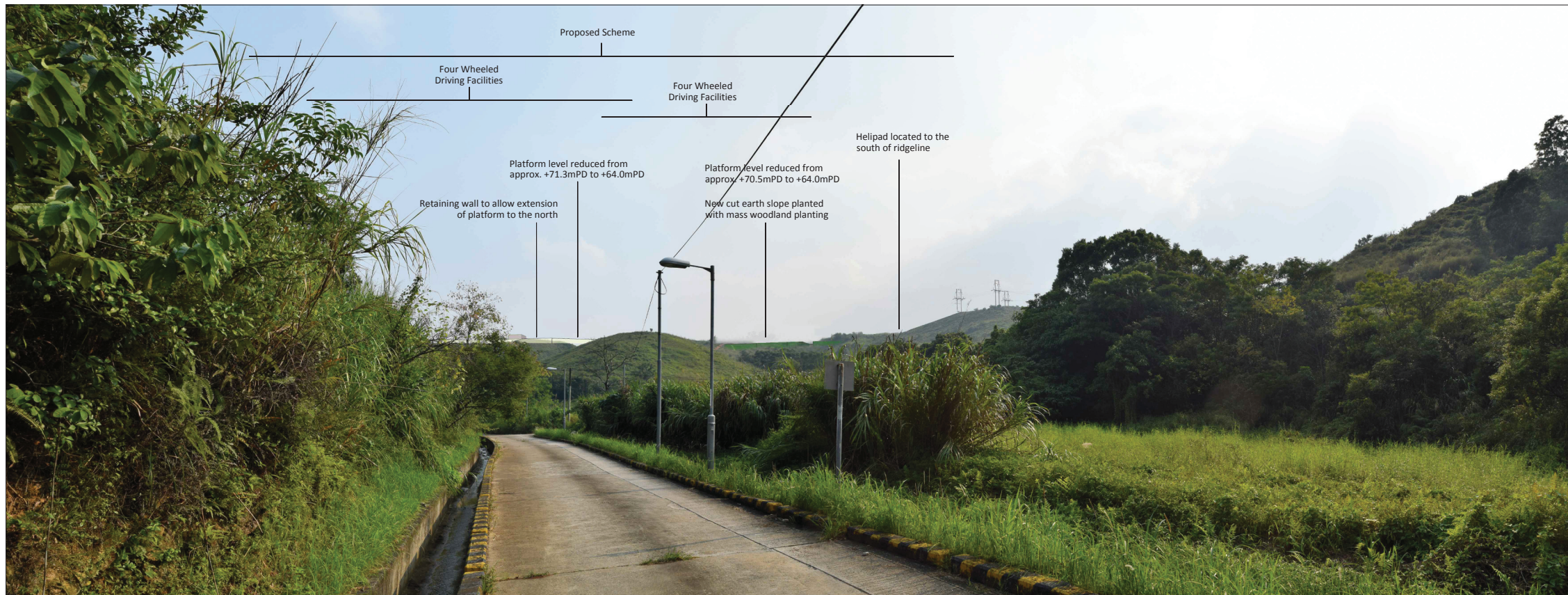
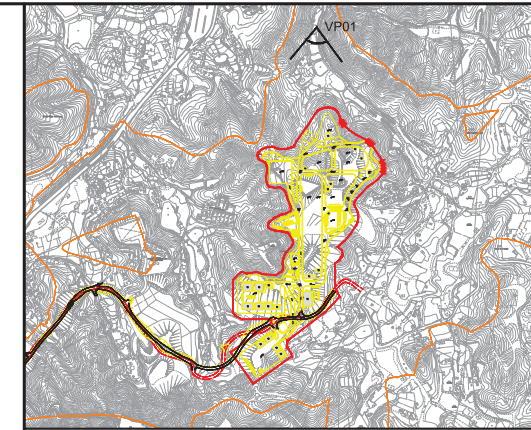




Vantage Point 01: View looking south for vehicle travellers and pedestrians on small rural road (VSR1.1) (Existing Situation)



Vantage Point 01: View looking south for vehicle travellers and pedestrians on small rural road (VSR1.1) (Day 1 with no mitigation measures)




LOCATION PLAN
N.T.S.

Vantage Point 01 (VP01)
 Vantage Point Elevation: +15.6mPD
 Viewing distance: 180m
 Maximum Height of Proposed Scheme: +75.5mPD

Rev	Date	Drawn	Description	Ch'k'd	App'd
P1	SEP 15	CCH	FIRST ISSUE	MT	SHC



20/F AIA Kowloon Tower
 Landmark East
 100 How Ming Street
 Kwun Tong, Kowloon
 Hong Kong
 T +852 2388 5767
 F +852 2387 1888
 www.mottmac.com.hk

Client
 CIVIL ENGINEERING AND DEVELOPMENT DEPARTMENT

Project
 AGREEMENT NO. CE31 / 2014(CE)
 ENGINEERING STUDY FOR POLICE FACILITIES IN KONG NGA PO - FEASIBILITY STUDY

Title
 LANDSCAPE AND VISUAL MITIGATION MEASURES - PHOTOMONTAGE

Designed	KC	Eng check	MT
Drawn	CCH	Coordination	LL
Dwg check	KC	Approved	SHC
Scale at A1	N.T.S.	Status	PRE
		Rev	P1

Drawing Number
 FIGURE 10-39