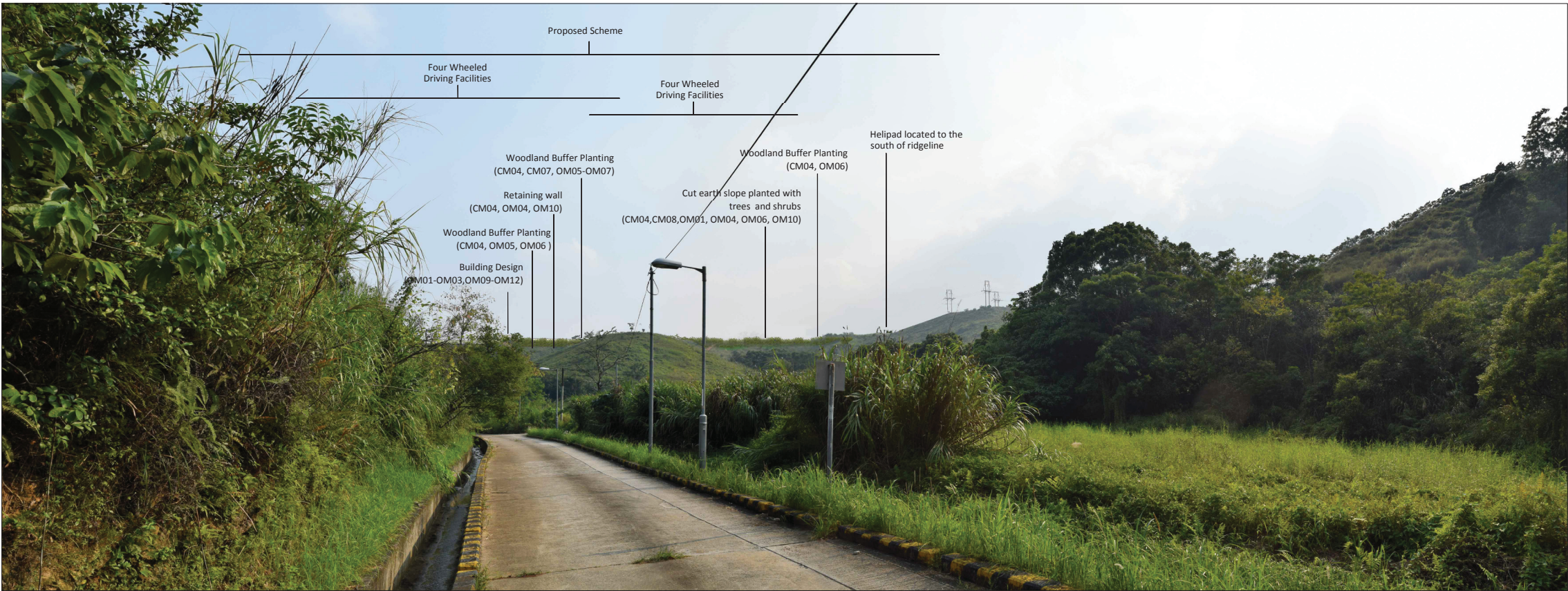
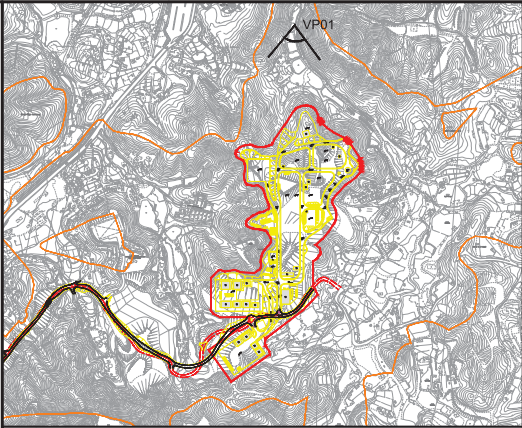


Vantage Point 01: View looking south for vehicle travellers and pedestrians on small rural road (VSR1.1) (Day 1 with mitigation measures)



Vantage Point 01: View looking south for vehicle travellers and pedestrians on small rural road (VSR1.1) (Year 10 with mitigation measures)




LOCATION PLAN
N.T.S.

Vantage Point 01 (VP01)
Vantage Point Elevation: +15.6mPD
Viewing distance: 180m
Maximum Height of Proposed Scheme: +75.5mPD

P1	SEP 15	CCH	FIRST ISSUE	MT	SHC
Rev	Date	Drawn	Description	Ch'k'd	App'd



20/F AIA Kowloon Tower
Landmark East
100 How Ming Street
Kwun Tong, Kowloon
Hong Kong
T +852 2000 5757
F +852 2007 1000
W www.mottmac.com.hk



CIVIL ENGINEERING
AND DEVELOPMENT
DEPARTMENT

Project
AGREEMENT NO. CE31 / 2014(CE)
ENGINEERING STUDY FOR POLICE
FACILITIES IN KONG NGA PO -
FEASIBILITY STUDY

Title
LANDSCAPE AND VISUAL MITIGATION
MEASURES - PHOTOMONTAGE

Designed	KC	Eng check	MT	
Drawn	CCH	Coordination	LL	
Dwg check	KC	Approved	SHC	
Scale at A1	N.T.S.	Status	PRE	Rev P1

Drawing Number
FIGURE 10-40