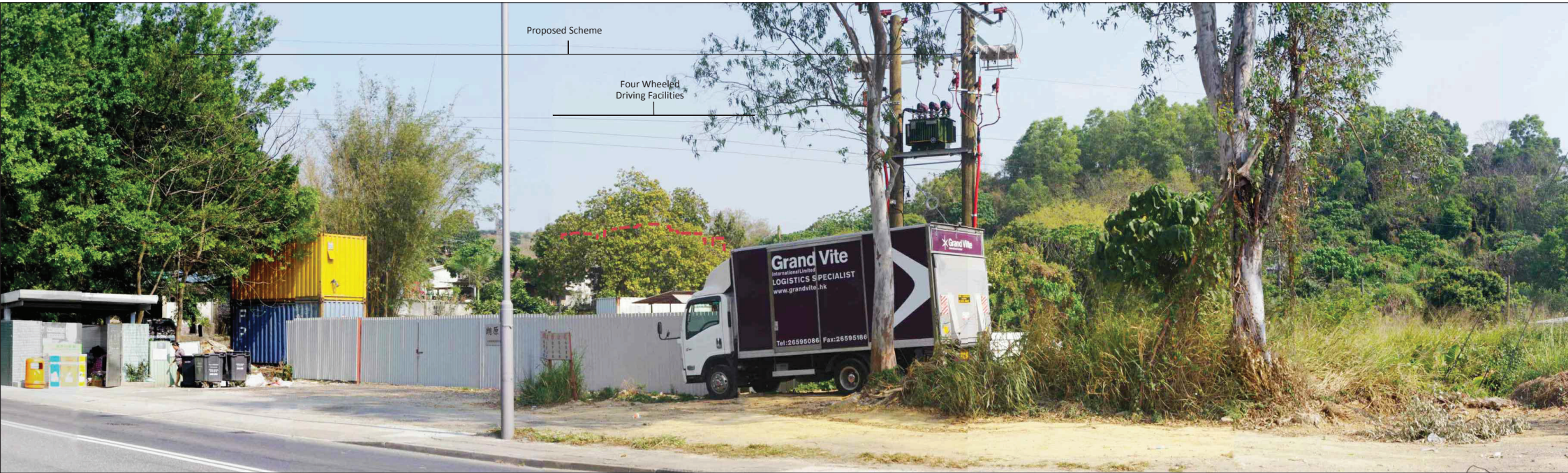
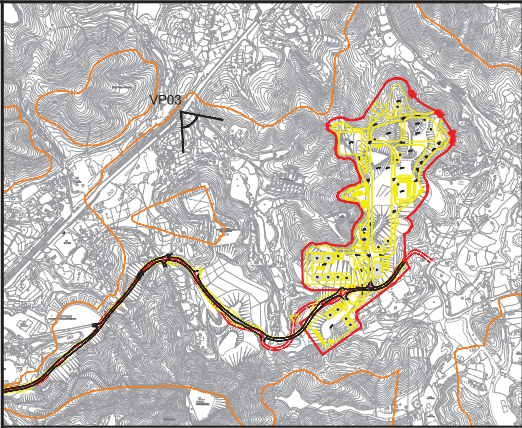




Vantage Point 03: View looking south east for vehicle travellers on Man Kam To Road (North) (VSR1.3) (Existing Situation)



Vantage Point 03: View looking south east for vehicle travellers on Man Kam To Road (North) (VSR1.3) (Day 1 with no mitigation measures)



LOCATION PLAN
N.T.S.

Vantage Point 03 (VP03)

Vantage Point Elevation: +12.5mPD
Viewing distance: 1010m
Maximum Height of Proposed Scheme: +75.5mPD

Note:
Red dashed line shows position of proposed scheme.

P1	SEP 15	CCH	FIRST ISSUE	MT	SHC
Rev	Date	Drawn	Description	Ch'k'd	App'd



20/F AIA Kowloon Tower
Landmark East
100 How Ming Street
Kwun Tong, Kowloon
Hong Kong
T +852 2000 0707
F +852 2007 1000
W www.mottmac.com.hk

Client



CIVIL ENGINEERING
AND DEVELOPMENT
DEPARTMENT

Project

AGREEMENT NO. CE31 / 2014(CE)
ENGINEERING STUDY FOR POLICE
FACILITIES IN KONG NGA PO -
FEASIBILITY STUDY

Title

LANDSCAPE AND VISUAL MITIGATION
MEASURES - PHOTOMONTAGE

Designed	KC	Eng check	MT	
Drawn	CCH	Coordination	LL	
Dwg check	KC	Approved	SHC	
Scale at A1	N.T.S.	Status	PRE	Rev
				P1

Drawing Number

FIGURE 10-43