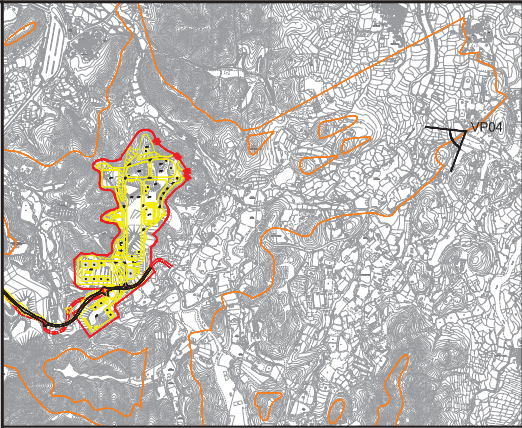




Vantage Point 04: View looking west for agricultural workers in fields of the Ping Yuen River Valley (VSR2.3) (Existing Situation)



Vantage Point 04: View looking west for agricultural workers in fields of the Ping Yuen River Valley (VSR2.3) (Day 1 with no mitigation measures)



LOCATION PLAN
N.T.S.

Vantage Point 04 (VP04)
Vantage Point Elevation: +11.9mPD
Viewing distance: 1260m
Maximum Height of Proposed Scheme: +75.5mPD

P1	SEP 15	CCH	FIRST ISSUE	MT	SHC
Rev	Date	Drawn	Description	Ch'k'd	App'd



20/F AIA Kowloon Tower
Landmark East
100 How Ming Street
Kwun Tong, Kowloon
Hong Kong
T +852 2388 5767
F +852 2387 1888
W www.mottmacd.com.hk

Client



CIVIL ENGINEERING
AND DEVELOPMENT
DEPARTMENT

Project

AGREEMENT NO. CE31 / 2014(CE)
ENGINEERING STUDY FOR POLICE
FACILITIES IN KONG NGA PO -
FEASIBILITY STUDY

Title

LANDSCAPE AND VISUAL MITIGATION
MEASURES - PHOTOMONTAGE

Designed	KC		Eng check	MT	
Drawn	CCH		Coordination	LL	
Dwg check	KC		Approved	SHC	
Scale at A1	N.T.S.	Status	PRE	Rev	P1
Drawing Number		FIGURE 10-45			