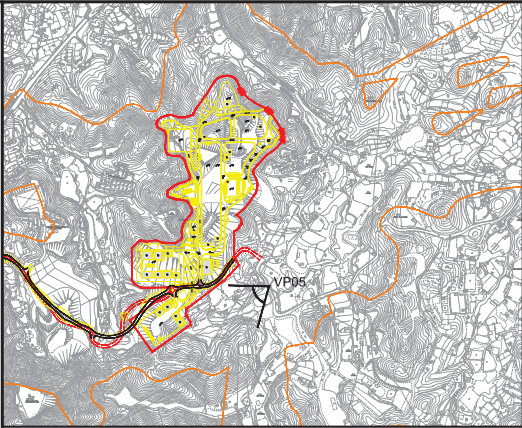




Vantage Point 05: View looking west for vehicle travellers and pedestrians on Kong Nga Po Road (VSR2.4) (Existing Situation)



Vantage Point 05: View looking west for vehicle travellers and pedestrians on Kong Nga Po Road (VSR2.4) (Day 1 with no mitigation measures)



LOCATION PLAN  
N.T.S.

Vantage Point 05 (VP05)  
Vantage Point Elevation: +27.1mPD  
Viewing distance: 302m  
Maximum Height of Proposed Scheme: +75.5mPD

P1	SEP 15	CCH	FIRST ISSUE	MT	SHC
Rev	Date	Drawn	Description	Ch'k'd	App'd



20/F AIA Kowloon Tower  
Landmark East  
100 How Ming Street  
Kwun Tong, Kowloon  
Hong Kong  
T +852 2388 5767  
F +852 2387 1888  
W www.mottmac.com.hk

Client



CIVIL ENGINEERING  
AND DEVELOPMENT  
DEPARTMENT

Project

AGREEMENT NO. CE31 / 2014(CE)  
ENGINEERING STUDY FOR POLICE  
FACILITIES IN KONG NGA PO -  
FEASIBILITY STUDY

Title

LANDSCAPE AND VISUAL MITIGATION  
MEASURES - PHOTOMONTAGE

Designed	KC		Eng check	MT	
Drawn	CCH		Coordination	LL	
Dwg check	KC		Approved	SHC	
Scale at A1	N.T.S.	Status	PRE	Rev	P1

Drawing Number

FIGURE 10-47