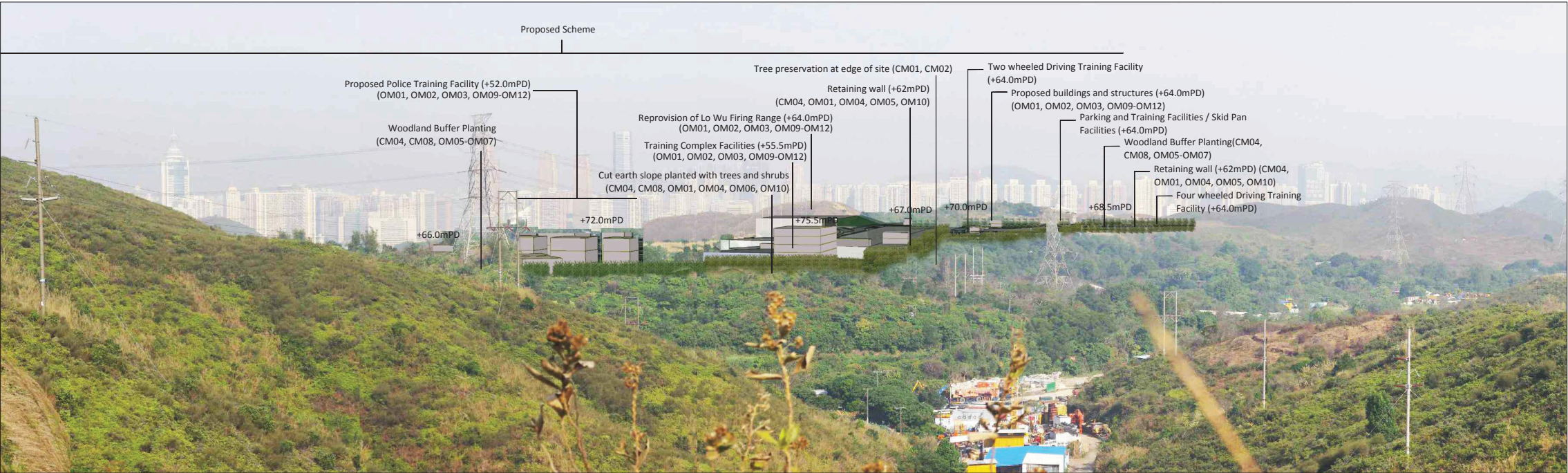
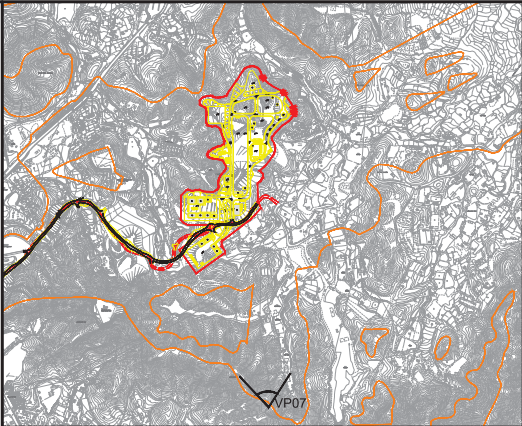


Vantage Point 07: View looking north for trail walkers on ridgeline footpath (VSR 3.1) (Day 1 with mitigation measures)



Vantage Point 07: View looking north for trail walkers on ridgeline footpath (VSR 3.1) (Year 10 with mitigation measures)




LOCATION PLAN
N.T.S.

Vantage Point 07 (VP07)
Vantage Point Elevation: +80.0mPD
Viewing distance: 890m
Maximum Height of Proposed Scheme: +75.5mPD

P1	SEP 15	CCH	FIRST ISSUE	MT	SHC
Rev	Date	Drawn	Description	Ch'k'd	App'd



20/F AIA Kowloon Tower
Landmark East
100 How Ming Street
Kwun Tong, Kowloon
Hong Kong
T +852 2388 5767
F +852 2387 1888
W www.mottmac.com.hk

Client	 CIVIL ENGINEERING AND DEVELOPMENT DEPARTMENT
--------	--

Project	AGREEMENT NO. CE31 / 2014(CE) ENGINEERING STUDY FOR POLICE FACILITIES IN KONG NGA PO - FEASIBILITY STUDY
---------	---

Title	LANDSCAPE AND VISUAL MITIGATION MEASURES - PHOTOMONTAGE
-------	--

Designed	KC	Eng check	MT
Drawn	CCH	Coordination	LL
Dwg check	KC	Approved	SHC
Scale at A1	N.T.S.	Status	PRE
		Rev	P1

Drawing Number
FIGURE 10-52