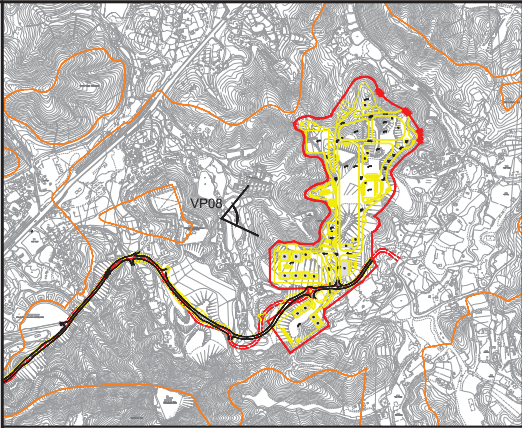




Vantage Point 08: View looking east for vehicle travellers and pedestrians on small rural road (San Uk Ling) (VSR4.3) (Existing Situation)



Vantage Point 08: View looking east for vehicle travellers and pedestrians on small rural road (San Uk Ling) (VSR4.3) (Day 1 with no mitigation measures)



LOCATION PLAN
N.T.S.


Vantage Point 08 (VP08)
Vantage Point Elevation: +17.0mPD
Viewing distance: 290m
Maximum Height of Proposed Scheme: +75.5mPD

Note:
Red dashed line shows position of proposed scheme.

P1	SEP 15	CCH	FIRST ISSUE	MT	SHC
Rev	Date	Drawn	Description	Ch'k'd	App'd



20/F AIA Kowloon Tower
Landmark East
100 How Ming Street
Kwun Tong, Kowloon
Hong Kong
T +852 2388 5757
F +852 2357 1888
W www.mottmacd.com.hk



CIVIL ENGINEERING
AND DEVELOPMENT
DEPARTMENT

Project
AGREEMENT NO. CE31 / 2014(CE)
ENGINEERING STUDY FOR POLICE
FACILITIES IN KONG NGA PO -
FEASIBILITY STUDY

Title
LANDSCAPE AND VISUAL MITIGATION
MEASURES - PHOTOMONTAGE

Designed	KC	Eng check	MT
Drawn	CCH	Coordination	LL
Dwg check	KC	Approved	SHC
Scale at A1	N.T.S.	Status	PRE
		Rev	P1

Drawing Number
FIGURE 10-53