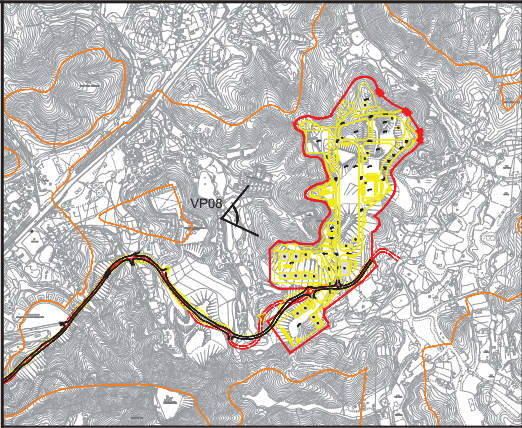




Vantage Point 08: View looking east for vehicle travellers and pedestrians on small rural road (San Uk Ling) (VSR4.3) (Day 1 with mitigation measures)



Vantage Point 08: View looking east for vehicle travellers and pedestrians on small rural road (San Uk Ling) (VSR4.3) (Year 10 with mitigation measures)



LOCATION PLAN  
N.T.S.


Vantage Point 08 (VP08)  
Vantage Point Elevation: +17.0mPD  
Viewing distance: 290m  
Maximum Height of Proposed Scheme: +75.5mPD

Note:  
Red dashed line shows position of proposed scheme.

P1	SEP 15	CCH	FIRST ISSUE	MT	SHC
Rev	Date	Drawn	Description	Ch'k'd	App'd



20/F AIA Kowloon Tower  
Landmark East  
100 How Ming Street  
Kwun Tong, Kowloon  
Hong Kong  
T +852 2388 5767  
F +852 2387 1888  
W www.mottmac.com.hk



CIVIL ENGINEERING  
AND DEVELOPMENT  
DEPARTMENT

Project  
AGREEMENT NO. CE31 / 2014(CE)  
ENGINEERING STUDY FOR POLICE  
FACILITIES IN KONG NGA PO -  
FEASIBILITY STUDY

Title  
LANDSCAPE AND VISUAL MITIGATION  
MEASURES - PHOTOMONTAGE

Designed	KC	Eng check	MT	
Drawn	CCH	Coordination	LL	
Dwg check	KC	Approved	SHC	
Scale at A1 N.T.S.	Status PRE	Rev P1		

Drawing Number  
FIGURE 10-54