

Drawing No.	Tree Group No.	Botanical Name	Chinese Common Name	Jurisdiction (AFCD, HyD, LandsD, LCSD & DSD)	SIZE (M)			App. Quantity of the group	Structural condition (Good/ Fair/ Poor)	Form (Good/ Fair/ Poor)	Health (Good/ Fair/ Poor)	Amenity Value (Good/ Fair/ Poor)	Suitability for Transplanting		Conservation Status	Recommendation	Additional Remarks
					Height	Trunk DBH	Spread						(High/ Medium/ Low)	Remarks			
60334056/EIA/TS02	G1	<i>Acacia confusa</i>	台灣相思	LCSD, HyD	8-12	0.2-0.4	5-9	42	Fair	Poor	Fair	Fair	Low	b,c,f	NIL	Approximately 90% to be affected Approximately 10% to be retained	NIL
		<i>Acacia mangium</i>	大葉相思		7-10	0.2-0.3	4-6	5	Fair	Fair	Fair	Fair	Low	b,c	NIL		
		<i>Aleurites moluccana</i>	石栗		8-9	0.25-0.3	4-6	10	Good	Fair	Fair	Fair	Medium	NIL	NIL		
		<i>Bauhinia purpurea</i>	紅花洋蹄甲		4-6	0.11-0.25	3-5	11	Fair	Fair	Fair	Fair	Medium	NIL	NIL		
		<i>Bombax ceiba</i>	木棉		6-10	0.15-0.3	3-5	5	Good	Fair	Fair	Fair	Medium	NIL	NIL		
		<i>Callistemon rigidus</i>	紅千層		4-5	0.1-0.15	3-4	5	Good	Fair	Fair	Fair	Medium	NIL	NIL		
		<i>Senna siamea</i>	鐵刀木		6-9	0.2-0.25	4-7	3	Fair	Fair	Fair	Fair	Medium	NIL	NIL		
		<i>Casuarina equisetifolia</i>	木麻黃		8-10	0.2-0.28	4-6	3	Good	Fair	Fair	Fair	Low	b,c	NIL		
		<i>Celtis sinensis</i>	朴樹		6-12	0.15-0.4	4-9	5	Fair	Fair	Fair	Fair	Medium	NIL	NIL		
		<i>Delonix regia</i>	鳳凰木		8-11	0.2-0.5	5-10	10	Fair	Fair	Fair	Fair	Medium	NIL	NIL		
		<i>Erythrina variegata</i>	刺桐		5-7	0.15-0.2	5-6	2	Fair	Fair	Fair	Fair	Medium	NIL	NIL		
		<i>Ficus microcarpa</i>	細葉榕		6-12	0.15-0.6	4-10	13	Good	Fair	Fair	Fair	Medium	NIL	NIL		
		<i>Ficus religiosa</i>	菩提樹		7-8	0.2-0.28	4-6	1	Fair	Fair	Fair	Fair	Medium	NIL	NIL		
		<i>Ficus virens var. sublancoolata</i>	黃葛樹		5-9	0.2-0.3	5-8	4	Fair	Fair	Fair	Fair	Medium	NIL	NIL		
		<i>Hibiscus tiliaceus</i>	黃槿		5-6	0.15-0.2	5-6	15	Fair	Poor	Fair	Fair	Low	b,c,f	NIL		
		<i>Macaranga tanarius</i>	血桐		5-6	0.15-0.2	4-5	15	Fair	Poor	Fair	Fair	Low	b,c,f	NIL		
		<i>Melaleuca cajuputi subsp. Cumingiana</i>	白千層		5-10	0.1-0.28	4-5	20	Good	Fair	Fair	Fair	Medium	NIL	NIL		
		<i>Roystonea regia</i>	王棕		7-8	0.25-0.3	2-3	4	Good	Good	Good	Good	High	NIL	NIL		
		<i>Terminalia catappa</i>	欖仁樹		6-7	0.2-0.25	4-5	2	Fair	Fair	Fair	Fair	Medium	NIL	NIL		
									sub-total	175							
60334056/EIA/TS02	G2	<i>Acacia confusa</i>	台灣相思	LandsD, HyD	8-12	0.2-0.4	5-9	8	Fair	Poor	Fair	Fair	Low	b,c,f	NIL	Approximately 45% to be affected Approximately 55% to be retained	
		<i>Aleurites moluccana</i>	石栗		8-9	0.25-0.3	4-6	5	Good	Fair	Fair	Fair	Medium	NIL	NIL		
		<i>Bauhinia purpurea</i>	紅花洋蹄甲		4-6	0.11-0.25	3-5	5	Fair	Fair	Fair	Fair	Medium	NIL	NIL		
		<i>Cassia fistula</i>	豬腸豆		8-9	0.25-0.3	5-6	8	Fair	Fair	Fair	Fair	Medium	NIL	NIL		
		<i>Senna siamea</i>	鐵刀木		6-9	0.2-0.25	4-7	2	Fair	Fair	Fair	Fair	Medium	NIL	NIL		
		<i>Casuarina equisetifolia</i>	木麻黃		8-10	0.2-0.28	4-6	5	Fair	Fair	Fair	Fair	Low	b,c	NIL		
		<i>Celtis sinensis</i>	朴樹		6-12	0.15-0.4	4-9	2	Fair	Fair	Fair	Fair	Medium	NIL	NIL		
		<i>Eucalyptus torelliana</i>	毛葉桉		9-10	0.2-0.25	3-5	3	Fair	Fair	Fair	Fair	Low	b,c	NIL		
		<i>Hibiscus tiliaceus</i>	黃槿		5-6	0.15-0.2	5-6	9	Fair	Poor	Fair	Fair	Low	b,c,f	NIL		
		<i>Leucaena leucocephala</i>	銀合歡		4-9	0.1-0.3	3-6	20	Fair	Poor	Fair	Fair	Low	b,c,f,g	NIL		
		<i>Macaranga tanarius</i>	血桐		5-6	0.15-0.2	4-5	6	Fair	Poor	Fair	Fair	Low	b,c,f	NIL		
						sub-total	73										

Drawing No.	Tree Group No.	Botanical Name	Chinese Common Name	Jurisdiction (AFCD, HyD, LandsD, LCSD & DSD)	SIZE (M)			App. Quantity of the group	Structural condition (Good/ Fair/ Poor)	Form (Good/ Fair/ Poor)	Health (Good/ Fair/ Poor)	Amenity Value (Good/ Fair/ Poor)	Suitability for Transplanting		Conservation Status	Recommendation	Additional Remarks
					Height	Trunk DBH	Spread						(High/ Medium/ Low)	Remarks			
60334056/EIA/TS02	G3	<i>Acacia confusa</i>	台灣相思	LCSD, AFCD, LandsD	4-13	0.1-0.6	3-10	80	Fair	Poor	Fair	Fair	Low	b,c,f,h	NIL	Approximately 70% to be affected Approximately 30% to be retained	NIL
		<i>Cratogeomys cochinchinense</i>	黃牛木		3-7	0.1-0.25	2-5	30	Fair	Fair	Fair	Fair	Low	b,c,h	NIL		
		<i>Ficus microcarpa</i>	細葉榕		5-15	0.2-0.7	4-12	10	Fair	Fair	Fair	Fair	Low	b,c,h	NIL		
		<i>Leucaena leucocephala</i>	銀合歡		3-10	0.1-0.3	2-5	70	Fair	Poor	Fair	Fair	Low	b,c,f,g,h	NIL		
		<i>Litchi chinensis</i>	荔枝		4-10	0.15-0.3	4-8	10	Fair	Fair	Fair	Fair	Low	b,c,h	NIL		
		<i>Livistona chinensis</i>	蒲葵		4-8	0.25-0.3	2-4	5	Fair	Fair	Good	Good	High	NIL	NIL		
		<i>Macaranga tanarius</i>	血桐		3-7	0.11-0.3	3-6	35	Fair	Poor	Fair	Fair	Low	b,c,f,h	NIL		
		<i>Schefflera heptaphylla</i>	鴨腳木		3-8	0.1-0.3	3-7	45	Fair	Fair	Fair	Fair	Low	b,c,h	NIL		
									sub-total	285							
60334056/EIA/TS04	G4	<i>Acacia auriculiformis</i>	耳果相思	AFCD	7-9	0.12-0.3	4-6	40	Fair	Fair	Fair	Fair	Low	b,c,h	NIL	Approximately 80% to be affected Approximately 20% to be retained	NIL
		<i>Acacia confusa</i>	台灣相思		4-13	0.1-0.6	3-10	70	Fair	Poor	Fair	Fair	Low	b,c,f,h	NIL		
		<i>Aporosa chinensis</i>	銀柴		3-6	0.1-0.2	2-5	40	Fair	Fair	Fair	Fair	Low	b,c,h	NIL		
		<i>Cleistocalyx operculatus</i>	水翁		5-8	0.15-0.28	5-7	10	Fair	Fair	Fair	Fair	Low	b,c,h	NIL		
		<i>Cratogeomys cochinchinense</i>	黃牛木		3-7	0.1-0.25	2-5	30	Fair	Fair	Fair	Fair	Low	b,c,h	NIL		
		<i>Leucaena leucocephala</i>	銀合歡		3-10	0.1-0.3	2-5	50	Fair	Poor	Fair	Fair	Low	b,c,f,g,h	NIL		
		<i>Lophostemon confertus</i>	紅膠木		5-10	0.15-0.26	3-6	60	Fair	Fair	Fair	Fair	Low	b,c,h	NIL		
		<i>Pinus massoniana</i>	馬尾松		4-9	0.1-0.25	2-4	40	Fair	Fair	Fair	Fair	Low	b,c,h	NIL		
		<i>Rhus succedanea</i>	野漆		3-7	0.1-0.28	3-6	30	Fair	Fair	Fair	Fair	Low	b,c,h	NIL		
		<i>Schefflera heptaphylla</i>	鴨腳木		3-8	0.1-0.3	3-7	50	Fair	Fair	Fair	Fair	Low	b,c,h	NIL		
									sub-total	420							
60334056/EIA/TS03	G5	<i>Acacia confusa</i>	台灣相思	LandsD, AFCD	8-12	0.2-0.4	5-9	30	Fair	Poor	Fair	Fair	Low	b,c,f,h	NIL	Approximately 85% to be affected Approximately 15% to be retained	NIL
		<i>Cleistocalyx operculatus</i>	水翁		5-8	0.15-0.28	5-7	3	Fair	Fair	Fair	Fair	Low	b,c,h	NIL		
		<i>Ficus hispida</i>	對葉榕		4-7	0.15-0.25	4-6	20	Fair	Poor	Fair	Fair	Low	b,c,f,h	NIL		
		<i>Ficus variegata</i>	青果榕		5-8	0.15-0.25	3-5	4	Fair	Fair	Fair	Fair	Low	b,c,h	NIL		
		<i>Leucaena leucocephala</i>	銀合歡		3-10	0.1-0.3	2-5	14	Fair	Poor	Fair	Fair	Low	b,c,f,g,h	NIL		
		<i>Macaranga tanarius</i>	血桐		4-7	0.1-0.25	4-6	20	Fair	Poor	Fair	Fair	Low	b,c,f,h	NIL		
		<i>Mallotus paniculatus</i>	白楸		4-7	0.1-0.25	3-5	13	Fair	Fair	Fair	Fair	Low	b,c,h	NIL		
		<i>Rhus succedanea</i>	野漆		4-7	0.1-0.25	3-5	3	Fair	Fair	Fair	Fair	Low	b,c,h	NIL		
		<i>Schefflera heptaphylla</i>	鴨腳木		4-7	0.2-0.25	4-6	10	Fair	Poor	Fair	Fair	Low	b,c,f,h	NIL		
		<i>Sterculia lanceolata</i>	假蘋婆		4-8	0.15-0.26	3-5	3	Fair	Fair	Fair	Fair	Low	b,c,h	NIL		
						sub-total	120										

Drawing No.	Tree Group No.	Botanical Name	Chinese Common Name	Jurisdiction (AFCD, HyD, LandsD, LCSD & DSD)	SIZE (M)			App. Quantity of the group	Structural condition (Good/ Fair/ Poor)	Form (Good/ Fair/ Poor)	Health (Good/ Fair/ Poor)	Amenity Value (Good/ Fair/ Poor)	Suitability for Transplanting		Conservation Status	Recommendation	Additional Remarks
					Height	Trunk DBH	Spread						(High/ Medium/ Low)	Remarks			
60334056/EIA/TS01	G6	<i>Acacia confusa</i>	台灣相思	DSD	5-10	0.2-0.3	4-9	161	Good	Poor	Fair	Fair	Low	b,c,f	NIL	Majority would be retained	NIL
		<i>Albizia lebbbeck</i>	大葉合歡		6-7	0.2-0.21	4-5	2	Good	Fair	Fair	Fair	Medium	NIL	NIL		
		<i>Aleurites moluccana</i>	石栗		8-10	0.2-0.25	4-5	11	Good	Good	Fair	Fair	Medium	NIL	NIL		
		<i>Artocarpus heterophyllus</i>	波蘿蜜		5-6	0.28-0.3	3-4	3	Good	Good	Fair	Fair	Medium	NIL	NIL		
		<i>Averrhoa carambola</i>	楊桃		3-4	0.1-0.11	3-4	2	Good	Fair	Fair	Fair	Medium	NIL	NIL		
		<i>Bauhinia variegata</i>	宮粉洋蹄甲		4-5	0.1-0.11	3-4	27	Good	Fair	Fair	Fair	Medium	NIL	NIL		
		<i>Bischofia javanica</i>	秋楓		5-6	0.11-0.12	3-4	5	Good	Good	Fair	Fair	Medium	NIL	NIL		
		<i>Bixa orellana</i>	紅木		3-4	0.1-0.11	2-3	4	Good	Good	Fair	Fair	Medium	NIL	NIL		
		<i>Bombax ceiba</i>	木棉		9-11	0.2-0.3	3-5	2	Good	Good	Fair	Fair	Medium	NIL	NIL		
		<i>Brachychiton acerifolius</i>	槭葉蘋婆		5-6	0.1-0.11	2-3	2	Good	Good	Fair	Fair	Medium	NIL	NIL		
		<i>Bridelia tomentosa</i>	土密樹		6-9	0.25-0.28	3-4	3	Good	Poor	Fair	Fair	Low	b,c,f	NIL		
		<i>Callistemon viminalis</i>	串錢柳		3-4	0.1-0.11	2-3	19	Good	Fair	Fair	Fair	Medium	NIL	NIL		
		<i>Cassia fistula</i>	豬腸豆		5-6	0.11-0.12	3-4	10	Good	Good	Fair	Fair	Medium	NIL	NIL		
		<i>Cassia surattensis</i>	黃槐		3	0.1	2	1	Good	Good	Fair	Fair	Medium	NIL	NIL		
		<i>Casuarina equisetifolia</i>	木麻黃		6-12	0.11-0.3	3-5	79	Good	Good	Fair	Fair	Low	b,c	NIL		
		<i>Celtis sinensis</i>	朴樹		5-7	0.2-0.3	4-5	9	Good	Fair	Fair	Fair	Medium	NIL	NIL		
		<i>Chukrasia tabularis</i>	麻棟		5-6	0.11-0.12	3-4	11	Good	Good	Fair	Fair	Medium	NIL	NIL		
		<i>Cinnamomum burmannii</i>	陰香		3-4	0.1-0.11	2-3	14	Good	Good	Fair	Fair	Medium	NIL	NIL		
		<i>Cinnamomum camphora</i>	樟樹		4-5	0.1-0.11	2-3	5	Good	Good	Fair	Fair	Medium	NIL	NIL		
		<i>Citrus maxima</i>	柚		5-8	0.1-0.11	3-4	2	Good	Good	Fair	Fair	Medium	NIL	NIL		
		<i>Cleistocalyx operculatus</i>	水翁		5-9	0.11-0.3	3-5	42	Good	Good	Fair	Fair	Medium	NIL	NIL		
		<i>Delonix regia</i>	鳳凰木		8-9	0.2-0.3	5-8	11	Good	Good	Fair	Fair	Medium	NIL	NIL		
		<i>Dimocarpus longan</i>	龍眼		5-6	0.15-0.25	3-4	4	Good	Fair	Fair	Fair	Medium	NIL	NIL		
		<i>Elaeocarpus sylvestris</i>	山杜英		3-4	0.1-0.11	2-3	4	Good	Good	Fair	Fair	Medium	NIL	NIL		
		<i>Elaeocarpus yunnanensis</i>	雲南杜英		3-4	0.1-0.11	2-3	10	Good	Good	Fair	Fair	Medium	NIL	NIL		
		<i>Ficus altissima</i>	高山榕		4-5	0.3-0.31	4-5	4	Good	Good	Fair	Fair	Medium	NIL	NIL		
		<i>Ficus benjamina</i>	垂葉榕		3	0.1	2	1	Good	Good	Fair	Fair	Medium	NIL	NIL		
		<i>Ficus elastica</i>	印度橡樹		5-12	0.28-0.9	4-11	14	Good	Good	Fair	Fair	Medium	NIL	NIL		
		<i>Ficus microcarpa</i>	細葉榕		5-10	0.2-0.9	5-10	18	Good	Good	Fair	Fair	Medium	NIL	NIL		
		<i>Ficus superba var. japonica</i>	筆管榕		5	0.15	4	1	Good	Fair	Fair	Fair	Medium	NIL	NIL		
		<i>Grevillea robusta</i>	銀樺		4-5	0.11-0.12	2-3	2	Good	Good	Fair	Fair	Medium	NIL	NIL		
		<i>Hibiscus tiliaceus</i>	黃槿		4-5	0.15-0.18	4-5	105	Good	Good	Fair	Fair	Medium	NIL	NIL		
<i>Khaya senegalensis</i>	非洲棟	4-5	0.1-0.11	3-4	5	Good	Fair	Fair	Fair	Medium	NIL	NIL					
<i>Kigelia pinnata</i>	吊瓜樹	5-6	0.1-0.11	3-4	2	Good	Good	Fair	Fair	Medium	NIL	NIL					
<i>Koelreuteria bipinnata</i>	複羽葉欒樹	4-5	0.11-0.12	3-4	10	Good	Good	Fair	Fair	Medium	NIL	NIL					
<i>Koelreuteria elegans</i>	台灣欒樹	4-5	0.1-0.11	3-4	19	Good	Good	Fair	Fair	Medium	NIL	NIL					
<i>Lagerstroemia speciosa</i>	大葉紫薇	4-5	0.1-0.11	3-4	15	Good	Good	Fair	Fair	Medium	NIL	NIL					
<i>Liquidambar formosana</i>	楓香	5-6	0.11-0.12	3-4	15	Good	Good	Fair	Fair	Medium	NIL	NIL					

Drawing No.	Tree Group No.	Botanical Name	Chinese Common Name	Jurisdiction (AFCD, HyD, LandsD, LCSD & DSD)	SIZE (M)			App. Quantity of the group	Structural condition (Good/ Fair/ Poor)	Form (Good/ Fair/ Poor)	Health (Good/ Fair/ Poor)	Amenity Value (Good/ Fair/ Poor)	Suitability for Transplanting		Conservation Status	Recommendation	Additional Remarks
					Height	Trunk DBH	Spread						(High/ Medium/ Low)	Remarks			
		<i>Litchi chinensis</i>	荔枝		2	0.1	2	1	Good	Good	Fair	Fair	Medium	NIL	NIL		
		<i>Livistona chinensis</i>	蒲葵		3-5	0.2-0.25	2-3	18	Good	Good	Good	Good	High	NIL	NIL		
		<i>Macaranga tanarius</i>	血桐		4-6	0.15-0.3	3-5	30	Good	Poor	Fair	Fair	Low	b,c,f	NIL		
		<i>Magnolia grandiflora</i>	荷花玉蘭		3-4	0.1-0.11	2-3	5	Good	Good	Fair	Fair	Medium	NIL	NIL		
		<i>Mangifera indica</i>	杧果		3	0.1	2	1	Good	Good	Fair	Fair	Medium	NIL	NIL		
		<i>Melaleuca cajuputi subsp. Cumingiana</i>	白千層		5-6	0.12-0.15	3-4	30	Good	Good	Fair	Fair	Medium	NIL	NIL		
		<i>Melia azedarach</i>	楝		10-11	0.3-0.31	5-6	7	Good	Good	Fair	Fair	Medium	NIL	NIL		
		<i>Michelia alba</i>	白蘭		5-9	0.1-0.25	3-5	4	Good	Good	Fair	Fair	Medium	NIL	NIL		
		<i>Michelia chapensis</i>	樂昌含笑		5-6	0.11-0.12	3-4	7	Good	Good	Fair	Fair	Medium	NIL	NIL		
		<i>Morus alba</i>	桑		5-6	0.24-0.25	4-5	3	Good	Fair	Fair	Fair	Medium	NIL	NIL		
		<i>Plumeria rubra</i>	雞蛋花		3-4	0.1-0.25	3-4	16	Good	Good	Fair	Fair	Medium	NIL	NIL		
		<i>Pongamia pinnata</i>	水黃皮		4-5	0.1-0.11	3-4	4	Good	Good	Fair	Fair	Medium	NIL	NIL		
		<i>Psidium guajava</i>	番石榴		3-4	0.1-0.11	2-3	3	Good	Fair	Fair	Fair	Medium	NIL	NIL		
		<i>Sapindus saponaria</i>	無患子		4-5	0.1-0.11	3-4	5	Good	Good	Fair	Fair	Medium	NIL	NIL		
		<i>Sapium sebiferum</i>	烏桕		6	0.2	4	1	Good	Good	Fair	Fair	Medium	NIL	NIL		
		<i>Schefflera heptaphylla</i>	鴨腳木		3	0.11	2	1	Good	Fair	Fair	Fair	Medium	NIL	NIL		
		<i>Senna siamea</i>	鐵刀木		5-8	0.11-0.2	3-4	8	Good	Fair	Fair	Fair	Medium	NIL	NIL		
		<i>Spathodea campanulata</i>	火焰木		4-9	0.12-0.3	3-4	22	Good	Good	Fair	Fair	Medium	NIL	NIL		
		<i>Sterculia lanceolata</i>	假蘋婆		3-4	0.1-0.11	2-3	36	Good	Good	Fair	Fair	Medium	NIL	NIL		
		<i>Syzygium cumini</i>	海南蒲桃		4-5	0.1-0.11	3-4	4	Good	Fair	Fair	Fair	Medium	NIL	NIL		
		<i>Syzygium jambos</i>	蒲桃		4-8	0.1-0.3	3-5	78	Good	Good	Fair	Fair	Medium	NIL	NIL		
		<i>Tabebuia chrysantha</i>	黃花風鈴木		4-5	0.1-0.11	2-3	10	Good	Good	Fair	Fair	Medium	NIL	NIL		
		<i>Tabebuia impetiginosa</i>	紅花風鈴木		5-6	0.15-0.16	3-4	30	Good	Good	Fair	Fair	Medium	NIL	NIL		
		<i>Terminalia mantaly</i>	細葉欖仁		5-6	0.1-0.11	3-4	35	Good	Good	Fair	Fair	Medium	NIL	NIL		
							sub-total	1013									
							Total	2086									

Remarks for Suitability for Transplanting

- (a) Low amenity value;
- (b) Irrecoverable form after transplanting (e.g. if substantial crown and root pruning are necessary to facilitate the transplanting);
- (c) Low survival rate after transplanting;
- (d) Very large size (unless the feasibility to transplant has been considered financially reasonable and technically feasible during the feasibility stage);
- (e) With evidence of over-maturity and onset of senescence;
- (f) With poor health, structure or form (e.g. imbalanced form, leaning, with major cavity/cracks/splits); or cavity/cracks/splits); or
- (g) Undesirable species (e.g. *Leucaena leucocephala* which is an invasive exotic tree).
- (h) On steep slope



LEGEND:

--- PROJECT BOUNDARY

--- EXISTING TREE GROUP



PROJECT
項目

RELOCATION OF SHA TIN SEWAGE TREATMENT WORKS TO CAVERNS; CAVERNS AND SEWAGE TREATMENT WORKS - INVESTIGATION, DESIGN AND CONSTRUCTION

CLIENT
業主

渠務署
Drainage Services Department

CONSULTANT
顧問公司

AECOM Asia Company Ltd.
www.aecom.com

SUB-CONSULTANTS
分判工程師/公司

ISSUE/REVISION
修訂

I/R	DATE	DESCRIPTION	CHK.
修訂	日期	修訂描述	核對

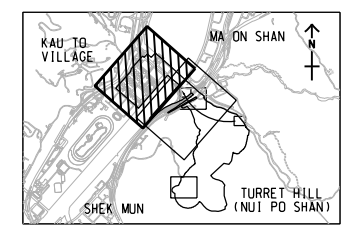
STATUS
狀況

SCALE
比例

DIMENSION UNIT
尺寸單位

A3 1 : 3000 METRES

KEY PLAN A3 1 : 100000



PROJECT NO.
項目編號

CONTRACT NO.
合約編號

60334056 CE 30/2014 (DS)

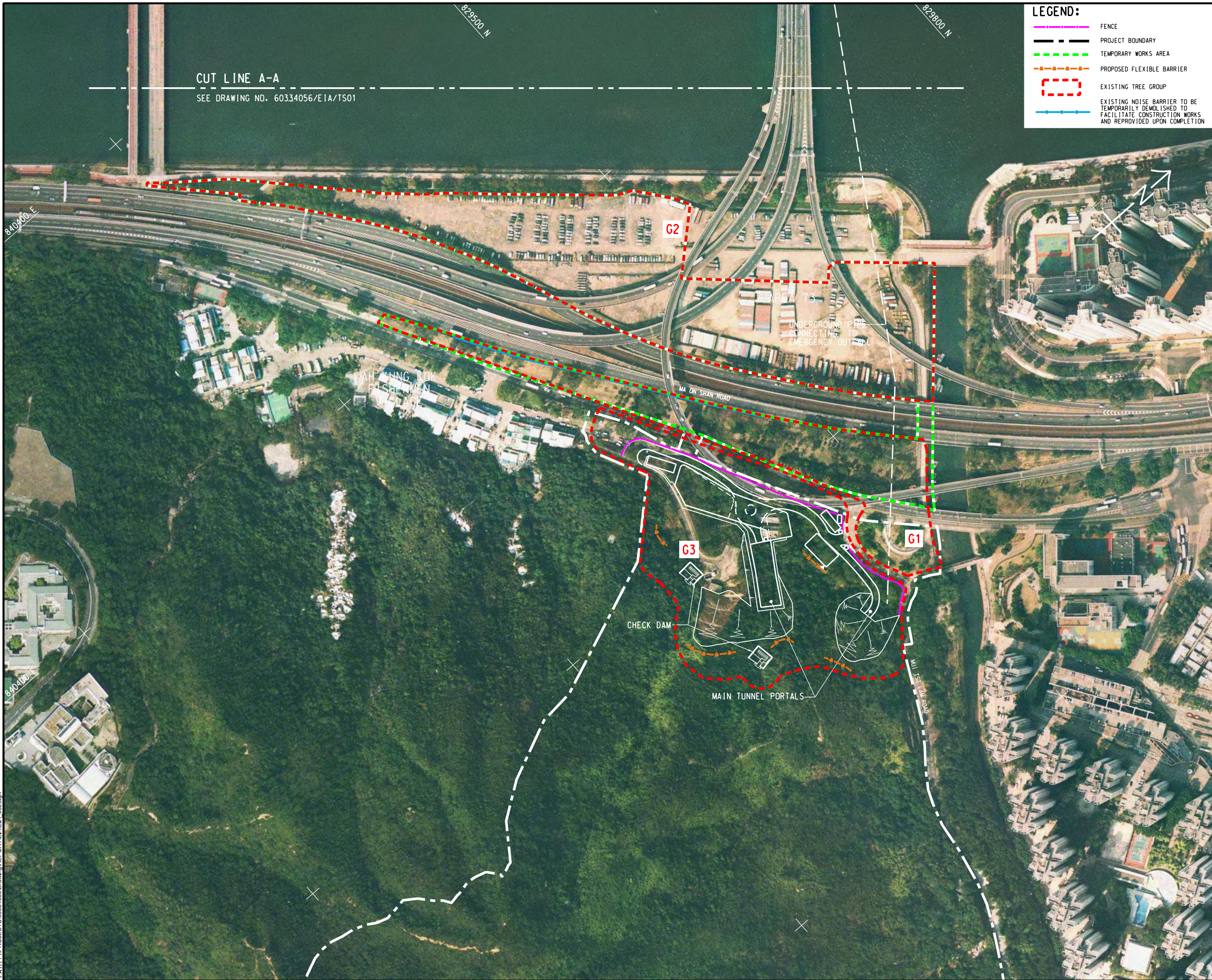
SHEET TITLE
圖則名稱

BROAD BRUSH TREE SURVEY PLAN

SHEET NUMBER
圖則編號

60334056/EIA/TS01

This drawing has been prepared for the use of AECOM's client. It may not be used, modified, reproduced or relied upon by third parties, except as agreed by AECOM or as required by law. AECOM accepts no responsibility, and denies any liability whatsoever, to any party that uses or relies on this drawing without AECOM's express written consent. Do not scale this document. All measurements must be obtained from the stated dimensions.



PROJECT
 項目
RELOCATION OF SHA TIN SEWAGE TREATMENT WORKS TO CAVERNS: CAVERNS AND SEWAGE TREATMENT WORKS - INVESTIGATION, DESIGN AND CONSTRUCTION

CLIENT
 業主
 渠務署
 Drainage Services Department

CONSULTANT
 顧問公司
 AECOM Asia Company Ltd.
 www.aecom.com

SUB-CONSULTANTS
 分判工程師/公司

ISSUE/REVISION
 修訂

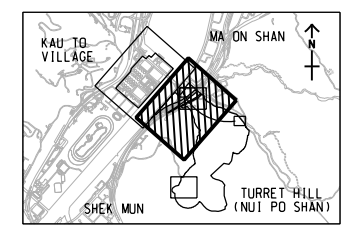
NO.	DATE	DESCRIPTION	CHK.

STATUS
 狀態

SCALE
 比例尺
 A3 1 : 3000

DIMENSION UNIT
 尺寸單位
 METRES

KEY PLAN A3 1 : 100000



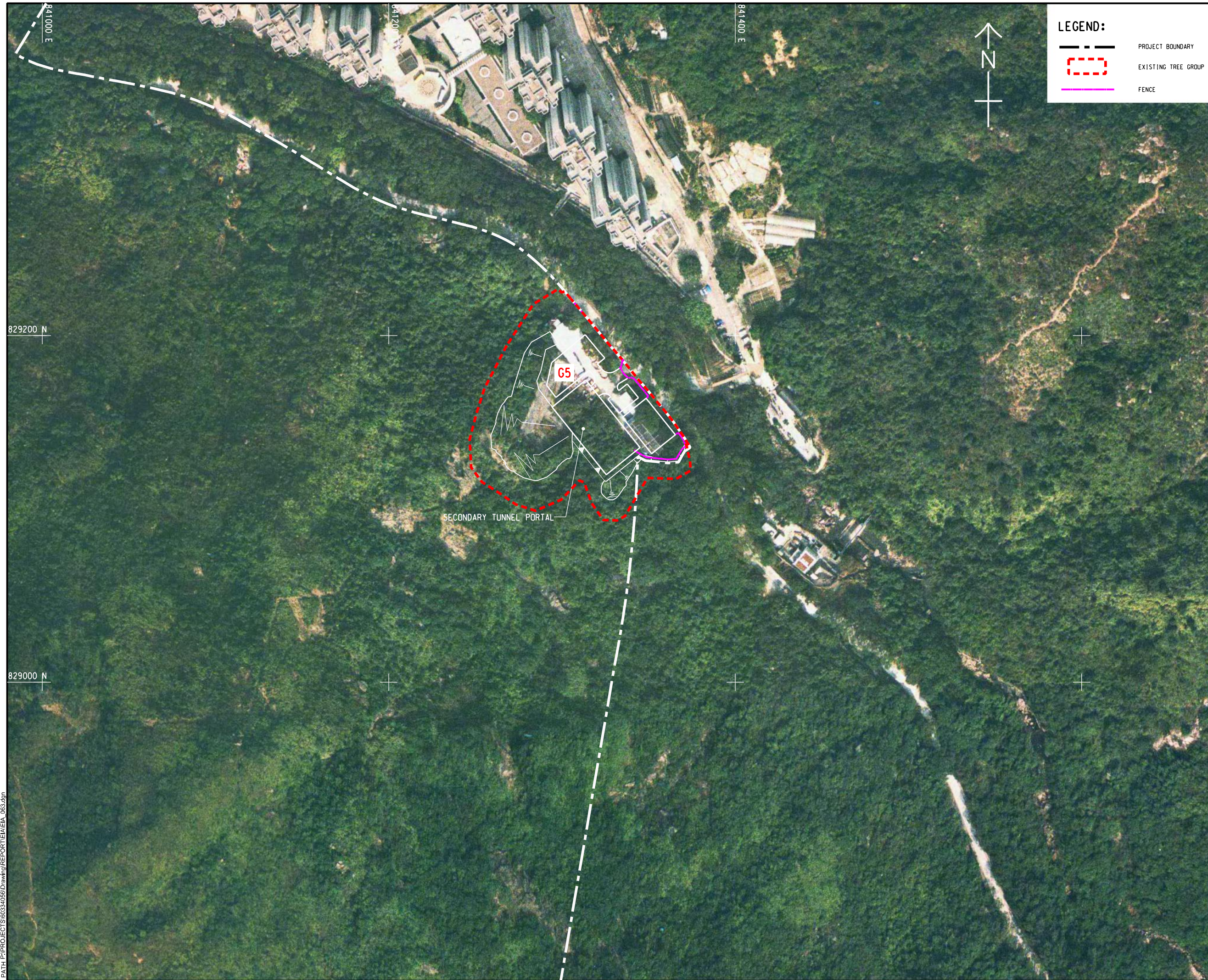
PROJECT NO.
 項目編號
 60334056

CONTRACT NO.
 合約編號
 CE 30/2014 (DS)

SHEET TITLE
 圖則名稱
 BROAD BRUSH TREE SURVEY PLAN

SHEET NUMBER
 圖則編號
 60334056/EIA/TS02

This drawing has been prepared for the use of AECOM's client. It may not be used, modified, reproduced or relied upon by third parties, except as agreed by AECOM or as required by law. AECOM accepts no responsibility, and denies any liability whatsoever, to any party that uses or relies on this drawing without AECOM's express written consent. All measurements must be obtained from the stated dimensions.



LEGEND:

- PROJECT BOUNDARY
- EXISTING TREE GROUP
- FENCE

PROJECT
 項目
RELOCATION OF SHA TIN SEWAGE TREATMENT WORKS TO CAVERNS: CAVERNS AND SEWAGE TREATMENT WORKS - INVESTIGATION, DESIGN AND CONSTRUCTION

CLIENT
 業主
 渠務署
 Drainage Services Department

CONSULTANT
 顧問公司
 AECOM Asia Company Ltd.
 www.aecom.com

SUB-CONSULTANTS
 分判工程師/公司

ISSUE/REVISION
 修訂

I/R	DATE	DESCRIPTION	CHK.
修訂	日期	修訂描述	核對

STATUS
 狀況

SCALE
 比例
 A3 1 : 2000

DIMENSION UNIT
 尺寸單位
 METRES

KEY PLAN
 索引圖

PROJECT NO.
 項目編號
 60334056

CONTRACT NO.
 合約編號
 CE 30/2014 (DS)

SHEET TITLE
 圖紙名稱
 BROAD BRUSH TREE SURVEY PLAN

SHEET NUMBER
 圖紙編號
 60334056/EIA/TS03

This drawing has been prepared for the use of AECOM's client. It may not be used, modified, reproduced or relied upon by third parties, except as agreed by AECOM or as required by law. AECOM accepts no responsibility, and denies any liability whatsoever, to any party that uses or relies on this drawing without AECOM's express written consent. Do not scale this document. All measurements must be obtained from the stated dimensions.

ISO A1 594mm x 841mm
 Approved:
 Checked:
 Designer:
 Project Management Initials:
 2016/5/5
 PATH P:\PROJECTS\60334056\Drawing\REPORT\EA\EA_064.dgn



LEGEND:

--- PROJECT BOUNDARY

--- EXISTING TREE GROUP



AECOM

PROJECT
 項目

RELOCATION OF SHA TIN SEWAGE TREATMENT WORKS TO CAVERNS: CAVERNS AND SEWAGE TREATMENT WORKS - INVESTIGATION, DESIGN AND CONSTRUCTION

CLIENT
 業主

渠務署
 Drainage Services Department

CONSULTANT
 顧問公司

AECOM Asia Company Ltd.
 www.aecom.com

SUB-CONSULTANTS
 分判工程師/公司

ISSUE/REVISION
 修訂

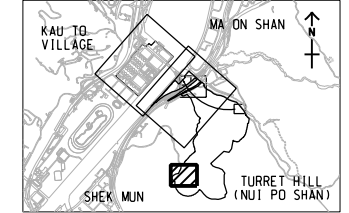
I/R	DATE	DESCRIPTION	CHK.
修訂	日期	修訂描述	核對

STATUS
 狀況

SCALE **DIMENSION UNIT**

A3 1 : 1000 METRES

KEY PLAN A3 1 : 100000



PROJECT NO. **CONTRACT NO.**

60334056 CE 30/2014 (DS)

SHEET TITLE

BROAD BRUSH TREE SURVEY PLAN

SHEET NUMBER

60334056/EIA/TS04

This drawing has been prepared for the use of AECOM's client. It may not be used, modified, reproduced or relied upon by third parties, except as agreed by AECOM or as required by law. AECOM accepts no responsibility, and denies any liability whatsoever, to any party that uses or relies on this drawing without AECOM's express written consent. Do not scale this document. All measurements must be obtained from the stated dimensions.