



Plate 1 - *Acampe rigida*



Plate 2 - *Ania hongkongensis*



Plate 3 - *Aquilaria sinensis*



Plate 4 - *Arundina graminiflora*



Plate 5 - *Canthium dicoccum*



Plate 6 - *Cibotium barometz*



Plate 7 - *Cleistoma simondii* var. *guangdongense*



Plate 8 - *Goodyera procera*



Plate 9 - *Pavetta hongkongensis*



Plate 10 - *Rhododendron simsii*

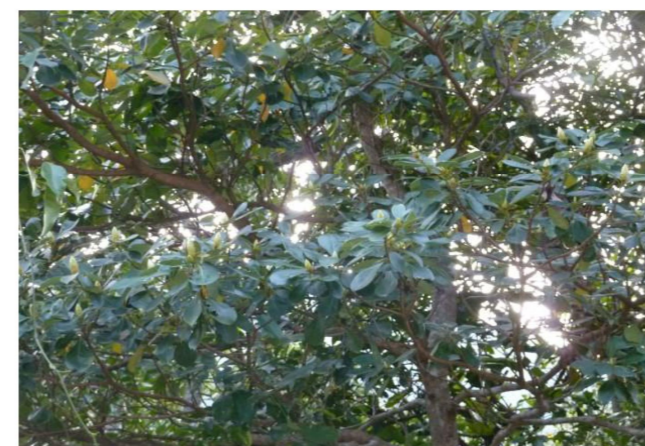


Plate 11 - *Rhodoleia championii*



Plate 12 - Grey Heron (*Ardea cinerea*) in white circle
Little Egret (*Egretta garzetta*) in red circle

AECOM	Agreement No. CE 30/2014 (DS)	SCALE	N.T.S.	DATE	Apr 2016
	Relocation of Sha Tin Sewage Treatment Works to Caverns: Caverns and Sewage Treatment Works - Investigation, Design and Construction	CHECK	CHIUMH	DRAWN	IPHPA
	Representative Photographs of Species of Conservation Importance Recorded within the Assessment Area	JOB NO.	60334056	Appendix No.	8.07
				Rev	-

AECOM	Agreement No. CE 30/2014 (DS)	SCALE	N.T.S.	DATE	Apr 2016
	Relocation of Sha Tin Sewage Treatment Works to Caverns: Caverns and Sewage Treatment Works - Investigation, Design and Construction	CHECK	CHIUMH	DRAWN	IPHPA
	Representative Photographs of Species of Conservation Importance Recorded within the Assessment Area	JOB NO.	60334056	Appendix No.	8.07
				Rev	-



Plate 13 - Orange-bellied Leafbird
(*Chloropsis hardwickii*)



Plate 14 - Hong Kong Newt
(*Paramesotriton hongkongensis*)



Plate 15 - Hong Kong Cascade Frog
(*Amolops hongkongensis*)



Plate 16 - *Parazacco spilurus*

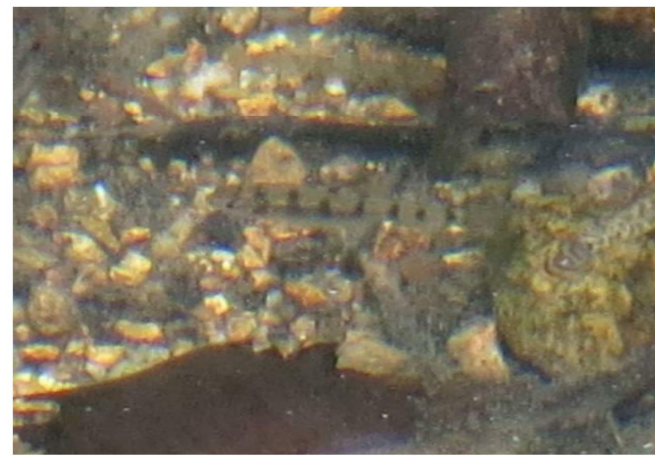


Plate 17 - *Acrossocheilus parallens*



Plate 18 - *Cryptopotamon anacoluthon*



Agreement No. CE 30/2014 (DS)
Relocation of Sha Tin Sewage Treatment Works to
Caverns: Caverns and Sewage Treatment Works -
Investigation, Design and Construction

**Representative Photographs of
Species of Conservation Importance
Recorded within the Assessment Area**

SCALE	N.T.S.	DATE	Apr 2016	
CHECK	CHIUMH	DRAWN	IPHPA	
JOB NO.	60334056	Appendix No.	8.07	Rev -