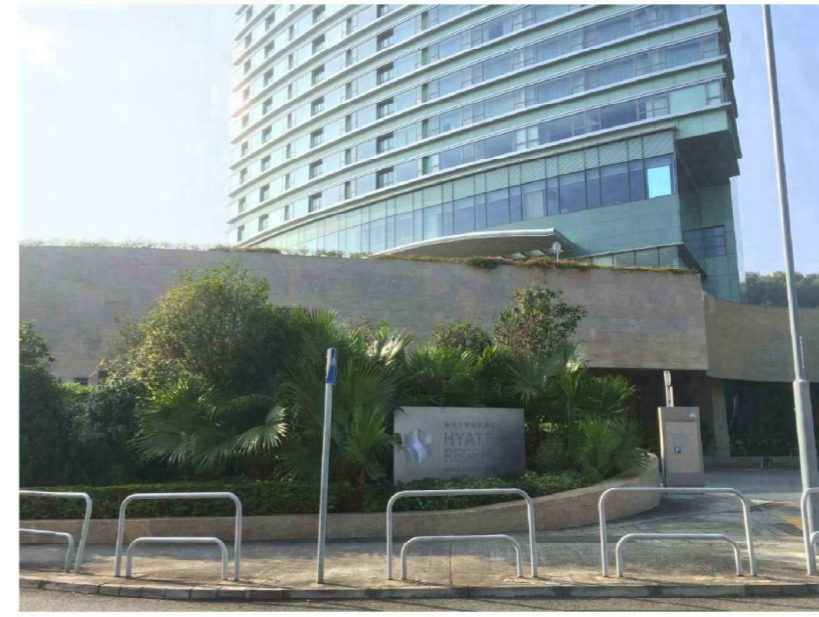




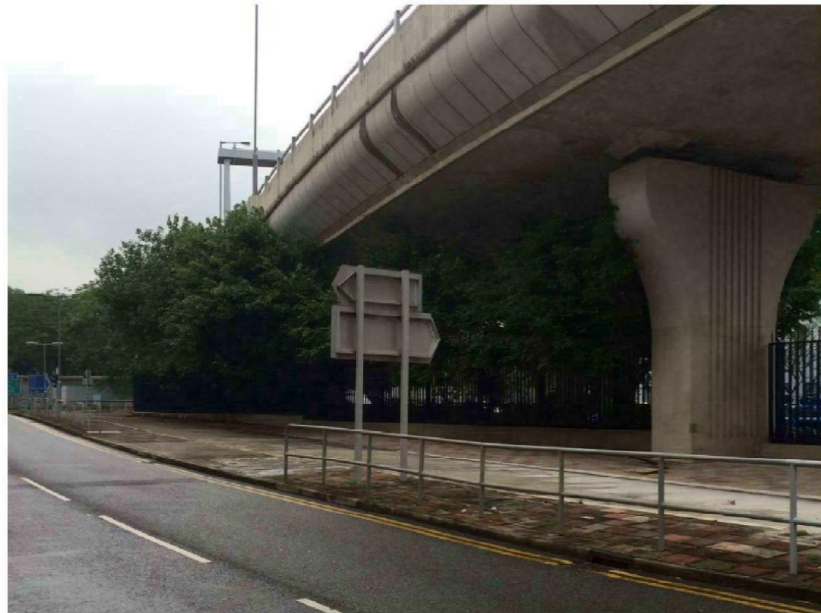
LR-13 STREAM RUNNING ALONG MUI TSZ LAM ROAD



LR-14 LANDSCAPE AREAS IN SHATIN HOSPITAL



LR-15 LANDSCAPE AREAS IN HYATT REGENCY HONG KONG, SHA TIN



LR-16 LANDSCAPE AREAS IN MARINE POLICE HEADQUARTERS AND WSD SALT WATER PUMPING STATION



LR-17 CYCLE TRACK CONNECTING THE WATERFRONT PROMENADE AND A KUNG KOK STREET

**PROJECT**

RELOCATION OF SHA TIN SEWAGE TREATMENT WORKS TO CAVERNS: CAVERNS AND SEWAGE TREATMENT WORKS - INVESTIGATION, DESIGN AND CONSTRUCTION

**CLIENT**

渠務署  
Drainage Services Department

**CONSULTANT**

AECOM Asia Company Ltd.  
www.aecom.com

**SUB-CONSULTANTS**

**ISSUE/REVISION**

NO.	DATE	DESCRIPTION	CHK.

**STATUS**

**SCALE**                      **DIMENSION UNIT**

A3 1 : 1000                      METRES

**KEY PLAN**

**PROJECT NO.**                      **CONTRACT NO.**

60334056                      CE 30/2014 (DS)

**SHEET TITLE**

LANDSCAPE RESOURCES PHOTOS

**SHEET NUMBER**

60334056/EIA/10.14

This drawing has been prepared for the use of AECOM's client. It may not be used, modified, reproduced or relied upon by third parties, except as agreed by AECOM or as required by law. AECOM accepts no responsibility, and denies any liability whatsoever, to any party that uses or relies on this drawing without AECOM's express written consent. Do not scale this document. All measurements must be obtained from the stated dimensions.