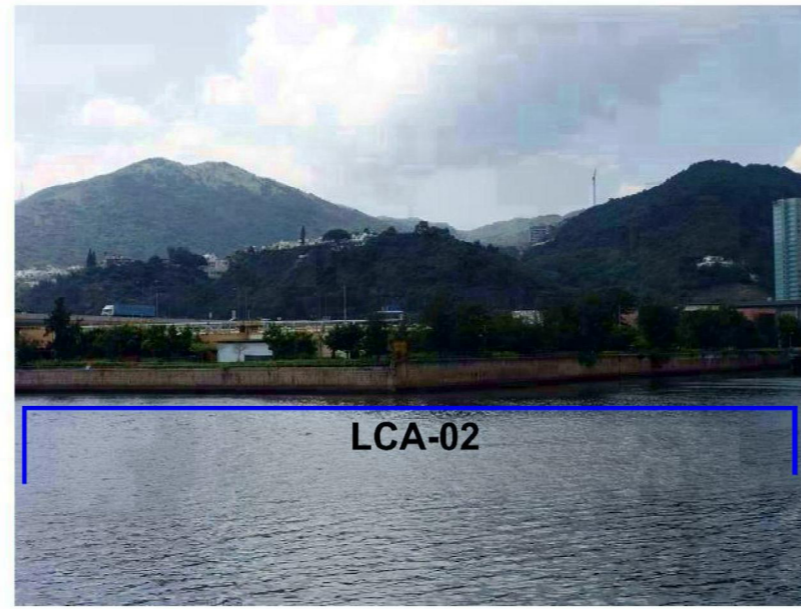


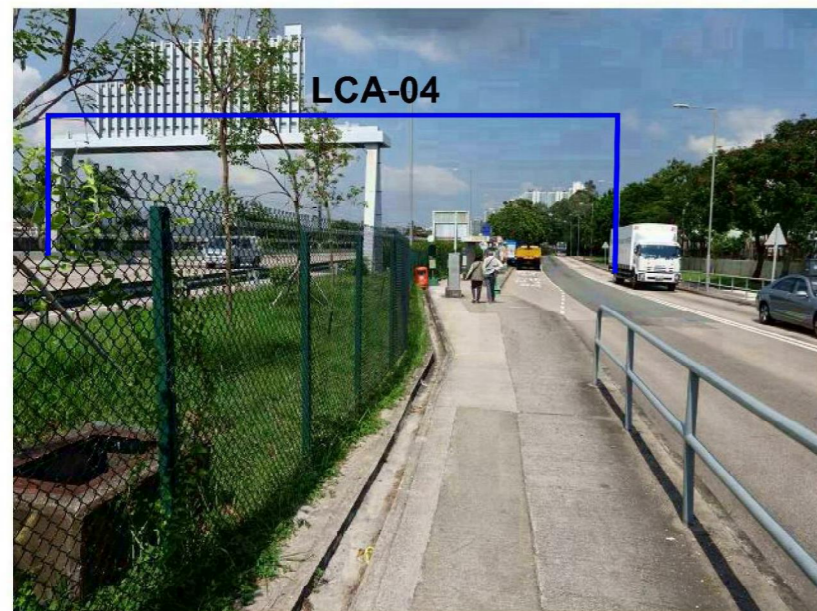
LCA-01 SHA TIN WATERFRONT INDUSTRIAL LCA (VIEWPOINT V1)



LCA-02 SHA TIN HOI AND SHING MUN RIVER INSHORE WATER LCA (VIEWPOINT V2)



LCA-03 MA ON SHAN WATERFRONT RESIDENTIAL LCA (VIEWPOINT V3)



LCA-04 MA ON SHAN TRANSPORTATION CORRIDOR LCA (VIEWPOINT V4)



LCA-05 A KUNG KOK AND TAI SHUI HANG MISCELLANEOUS URBAN FRINGE LCA (VIEWPOINT V5)



LCA-06 NUI PO SHAN UPLAND AND HILLSIDE LCA (VIEWPOINT V6)

PROJECT

RELOCATION OF SHA TIN SEWAGE TREATMENT WORKS TO CAVERNS: CAVERNS AND SEWAGE TREATMENT WORKS - INVESTIGATION, DESIGN AND CONSTRUCTION

CLIENT

渠務署
Drainage Services Department

CONSULTANT

AECOM Asia Company Ltd.
www.aecom.com

SUB-CONSULTANTS

ISSUE/REVISION

NO.	DATE	DESCRIPTION	CHK.

STATUS

SCALE

A3 1 : 1000

DIMENSION UNIT

METRES

KEY PLAN

PROJECT NO.

60334056

CONTRACT NO.

CE 30/2014 (DS)

SHEET TITLE

LANDSCAPE CHARACTER AREAS PHOTOS

SHEET NUMBER

60334056/EIA/10.22

This drawing has been prepared for the use of AECOM's client. It may not be used, modified, reproduced or relied upon by third parties, except as required by AECOM or as required by law. AECOM accepts no responsibility, and denies any liability whatsoever, to any party that uses or relies on this drawing without AECOM's express written consent. Do not scale this document. All measurements must be obtained from the stated dimensions.