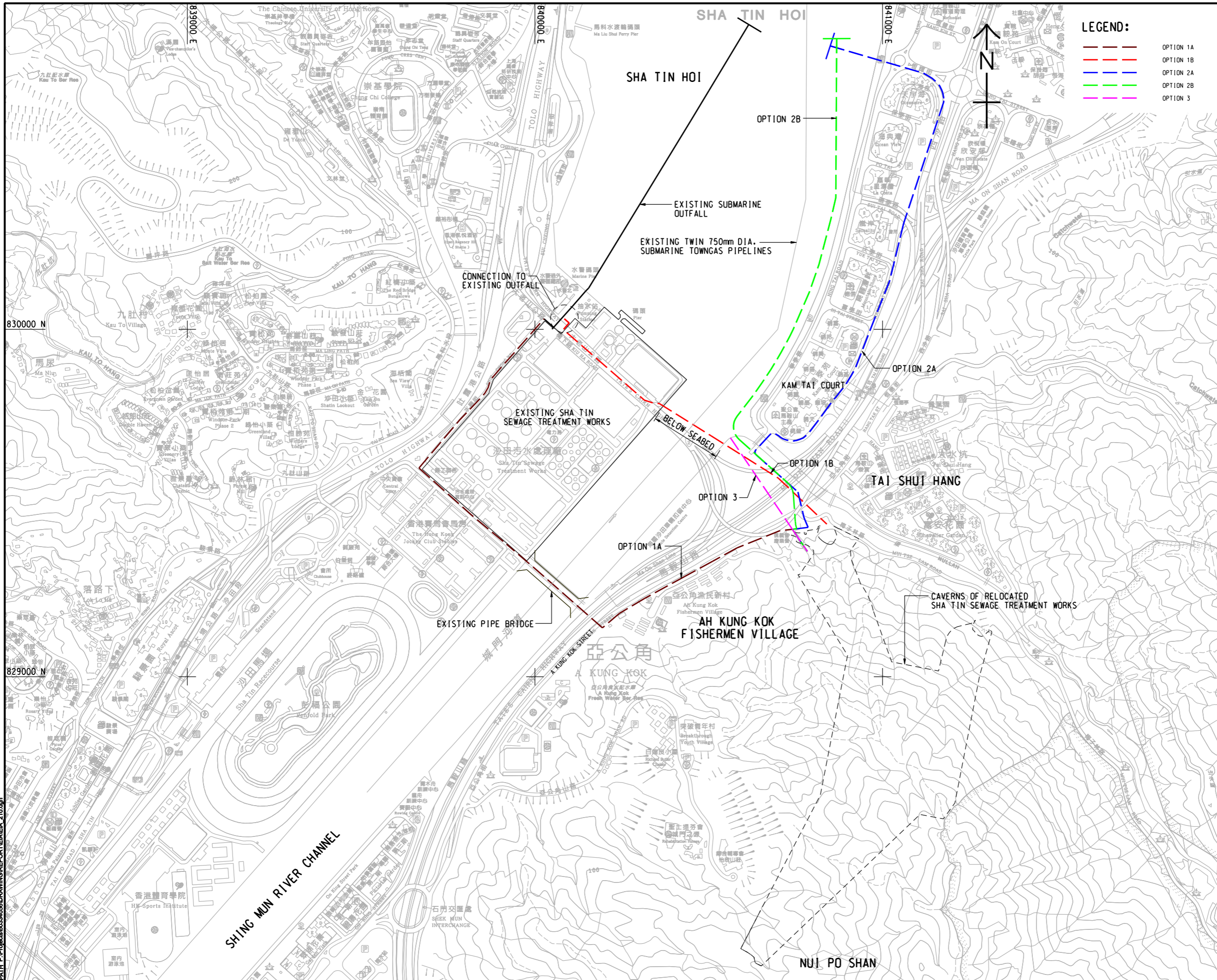


Pd File by: PENGM 2016/05/25
 PATH: P:\proj\60334056\DRAWING\REPORT\EIA\210.dgn
 Project Management Initials: Designer: Checked: Approved: ISO A1 594mm x 841mm



LEGEND:

- OPTION 1A
- OPTION 1B
- OPTION 2A
- OPTION 2B
- OPTION 3

AECOM

PROJECT
 項目
RELOCATION OF SHA TIN SEWAGE TREATMENT WORKS TO CAVERNS: CAVERNS AND SEWAGE TREATMENT WORKS - INVESTIGATION, DESIGN AND CONSTRUCTION

CLIENT
 業主
 渠務署
 Drainage Services Department

CONSULTANT
 工程顧問公司
 AECOM Asia Company Ltd.
 www.aecom.com

SUB-CONSULTANTS
 分判工程顧問公司

ISSUE/REVISION
 修訂

IR	DATE	DESCRIPTION	CHK.

STATUS
 階段

SCALE
 比例
 A3 1 : 10000

DIMENSION UNIT
 尺寸單位
 METRES

KEY PLAN
 索引圖

PROJECT NO.
 項目編號
 60334056

CONTRACT NO.
 合約編號
 CE 30/2014 (DS)

SHEET TITLE
 圖紙名稱
 ALTERNATIVE OPTIONS FOR EMERGENCY OUTFALL

SHEET NUMBER
 圖紙編號
 60334056/EIA/2.10

This drawing has been prepared for the use of AECOM's client. It may not be used, modified, reproduced or relied upon by third parties, except as agreed by AECOM or as required by law. AECOM accepts no responsibility, and does not warrant, for any party that uses or relies on this drawing without AECOM's express written consent. Do not scale this document. All measurements must be obtained from the related dimensions.