

**LEGEND:**

- PROJECT BOUNDARY
- 500m STUDY BOUNDARY
- ASR1
- AIR SENSITIVE RECEIVERS



**PROJECT**  
**RELOCATION OF SHA TIN SEWAGE TREATMENT WORKS TO CAVERNS: CAVERNS AND SEWAGE TREATMENT WORKS - INVESTIGATION, DESIGN AND CONSTRUCTION**

**CLIENT**  
**渠務署**  
 Drainage Services Department

**CONSULTANT**  
 AECOM Asia Company Ltd.  
 www.aecom.com

**SUB-CONSULTANTS**  
 分判工程師/顧問公司

**ISSUE/REVISION**

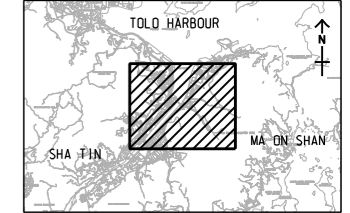
| NO. | DATE | DESCRIPTION | CHK. |
|-----|------|-------------|------|
|     |      |             |      |
|     |      |             |      |
|     |      |             |      |
|     |      |             |      |

**STATUS**  
 現狀

**SCALE**  
 比例: A3 1: 16000

**DIMENSION UNIT**  
 尺寸單位: METRES

**KEY PLAN** A3 1: 40000



**PROJECT NO.**  
 項目編號: 60334056

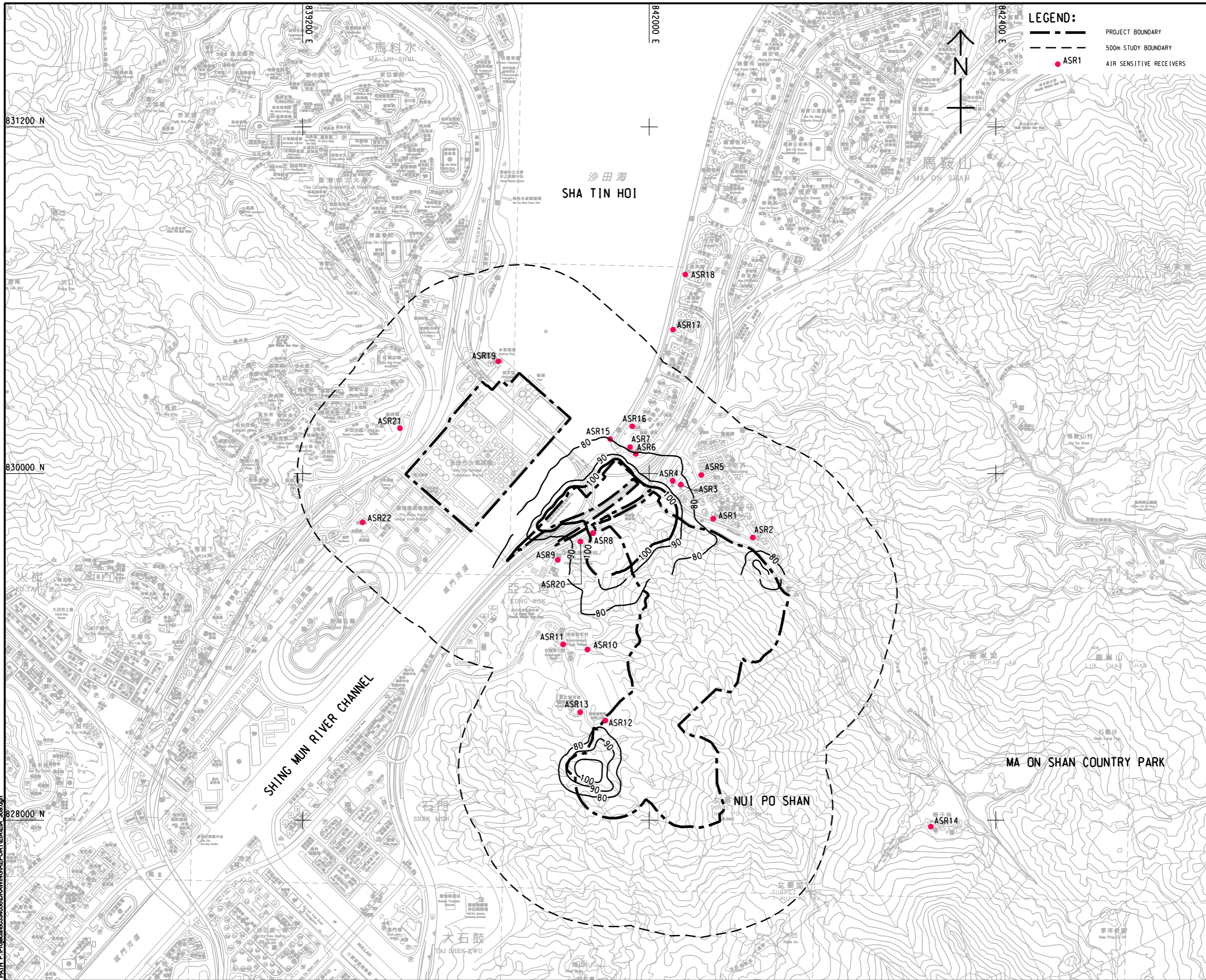
**CONTRACT NO.**  
 合約編號: CE 30/2014 (DS)

**SHEET TITLE**  
 圖紙名稱: MAXIMUM CUMULATIVE HOURLY TSP CONCENTRATION (µg/m³) AT 1.5 mAG (CONSTRUCTION OF CSTW) (TIER 1, MITIGATED SCENARIO)

**SHEET NUMBER**  
 圖紙編號: 60334056/EIA/3.08

This drawing has been prepared for the use of AECOM's client. It may not be used, modified, reproduced or relied upon by third parties, except as agreed by AECOM or as required by law. AECOM accepts no responsibility, and denies any liability whatsoever, to any party, for losses or claims on this drawing without AECOM's express written consent. Do not scale this document. All measurements must be obtained from the stated dimensions.





**LEGEND:**

- PROJECT BOUNDARY
- 500m STUDY BOUNDARY
- ASR1
- AIR SENSITIVE RECEIVERS



**PROJECT**  
項目  
**RELOCATION OF SHA TIN SEWAGE TREATMENT WORKS TO CAVERNS: CAVERNS AND SEWAGE TREATMENT WORKS - INVESTIGATION, DESIGN AND CONSTRUCTION**

**CLIENT**  
業主  
**渠務署**  
Drainage Services Department

**CONSULTANT**  
工程顧問公司  
AECOM Asia Company Ltd.  
www.aecom.com

**SUB-CONSULTANTS**  
分判工程顧問公司

**ISSUE/REVISION**  
修訂

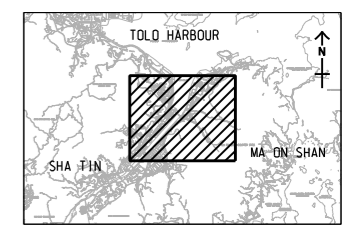
| NO. | DATE | DESCRIPTION | CHK. |
|-----|------|-------------|------|
|     |      |             |      |
|     |      |             |      |
|     |      |             |      |
|     |      |             |      |
|     |      |             |      |

**STATUS**  
階段

**SCALE**  
比例  
A3 1: 16000

**DIMENSION UNIT**  
尺寸單位  
METRES

**KEY PLAN** A3 1: 40000  
索引圖



**PROJECT NO.**  
項目編號  
60334056

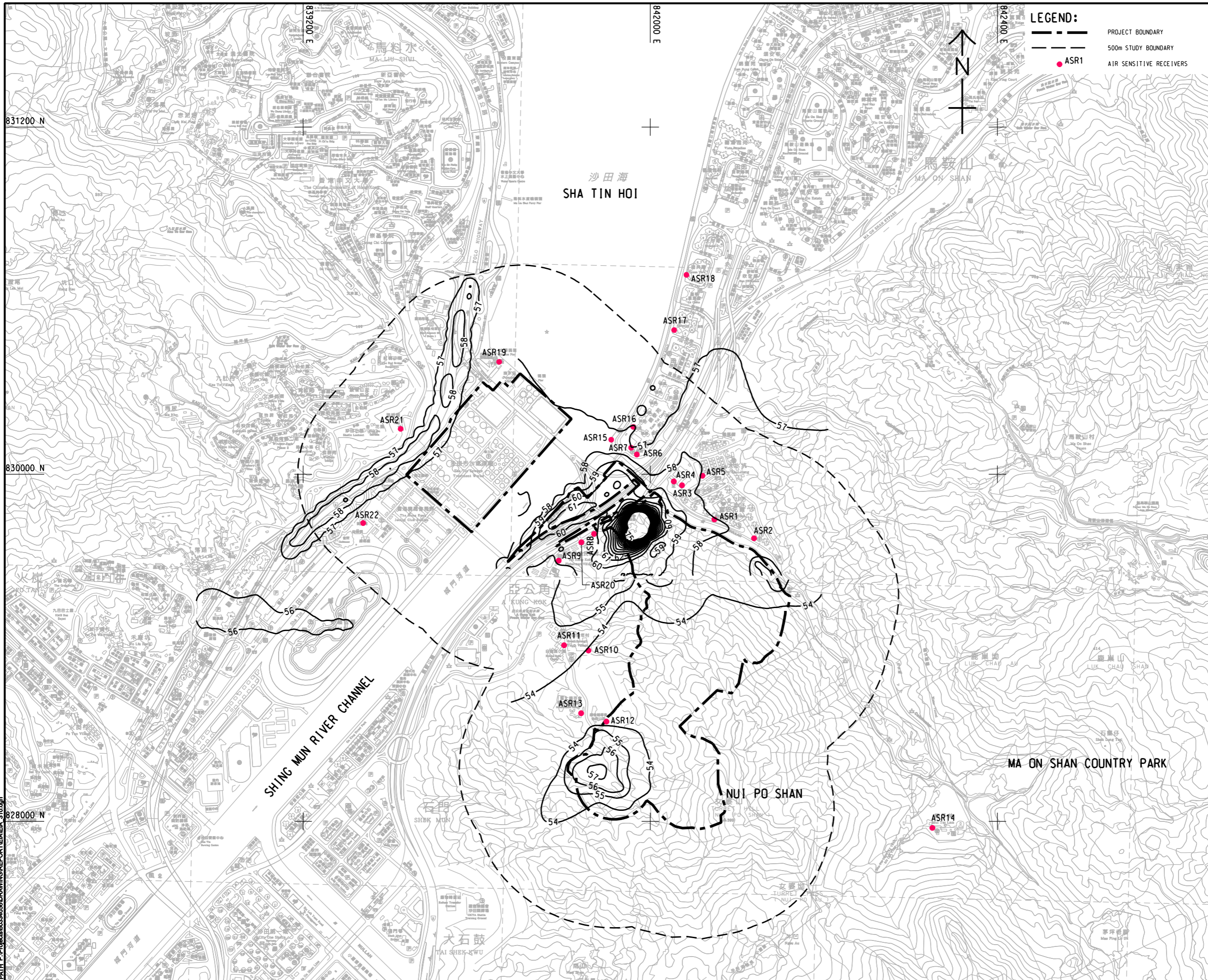
**CONTRACT NO.**  
合約編號  
CE 30/2014 (DS)

**SHEET TITLE**  
圖紙名稱  
**10th HIGHEST CUMULATIVE DAILY RSP CONCENTRATION (µg/m³) AT 1.5 mAG (CONSTRUCTION OF CSTW) (TIER 1, MITIGATED SCENARIO)**

**SHEET NUMBER**  
圖紙編號  
60334056/EIA/3.09

This drawing has been prepared for the use of AECOM's client. It may not be used, modified, reproduced or relied upon by third parties, except as approved by AECOM or as required by law. AECOM accepts no responsibility, and denies any liability whatsoever, to any party, for losses or claims on this drawing without AECOM's express written consent. Do not scale this document. All measurements must be obtained from the stated dimensions.





**LEGEND:**

- PROJECT BOUNDARY
- 500m STUDY BOUNDARY
- ASR1
- AIR SENSITIVE RECEIVERS



**PROJECT**  
**RELOCATION OF SHA TIN SEWAGE TREATMENT WORKS TO CAVERNS: CAVERNS AND SEWAGE TREATMENT WORKS - INVESTIGATION, DESIGN AND CONSTRUCTION**

**CLIENT**  
 渠務署  
 Drainage Services Department

**CONSULTANT**  
 AECOM Asia Company Ltd.  
 www.aecom.com

**SUB-CONSULTANTS**  
 分判工程顧問公司

**ISSUE/REVISION**

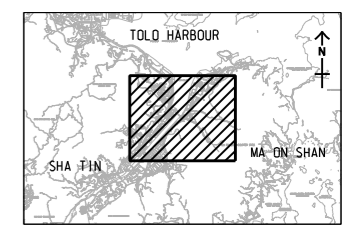
| NO. | DATE | DESCRIPTION | CHK. |
|-----|------|-------------|------|
|     |      |             |      |
|     |      |             |      |
|     |      |             |      |
|     |      |             |      |

**STATUS**  
 現狀

**SCALE**  
 比例  
 A3 1: 16000

**DIMENSION UNIT**  
 尺寸單位  
 METRES

**KEY PLAN** A3 1: 40000  
 索引圖



**PROJECT NO.**  
 項目編號  
 60334056

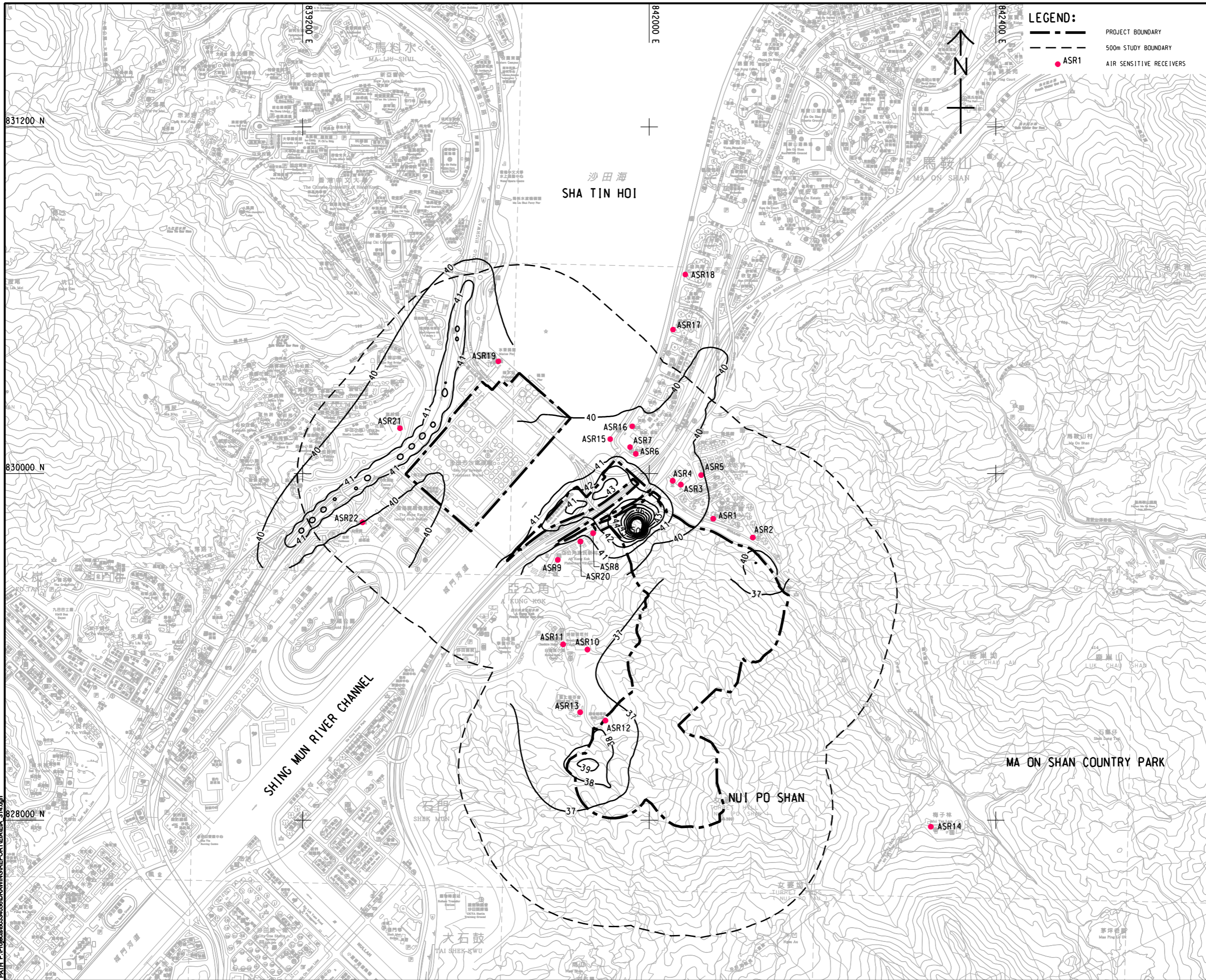
**CONTRACT NO.**  
 合約編號  
 CE 30/2014 (DS)

**SHEET TITLE**  
 圖紙名稱  
 10th HIGHEST CUMULATIVE DAILY FSP CONCENTRATION (µg/m³) AT 1.5 mAG (CONSTRUCTION OF CSTW) (TIER 1, MITIGATED SCENARIO)

**SHEET NUMBER**  
 圖紙編號  
 60334056/EIA/3.10

This drawing has been prepared for the use of AECOM's client. It may not be used, modified, reproduced or relied upon by third parties, except as agreed by AECOM or as required by law. AECOM accepts no responsibility, and denies any liability whatsoever, to any party, for losses or claims on this drawing without AECOM's express written consent. Do not scale this document. All measurements must be obtained from the stated dimensions.





**LEGEND:**

- PROJECT BOUNDARY
- 500m STUDY BOUNDARY
- ASR1
- AIR SENSITIVE RECEIVERS

**AECOM**

**PROJECT**  
項目

**RELOCATION OF SHA TIN SEWAGE TREATMENT WORKS TO CAVERNS: CAVERNS AND SEWAGE TREATMENT WORKS - INVESTIGATION, DESIGN AND CONSTRUCTION**

**CLIENT**  
業主

**渠務署**  
Drainage Services Department

**CONSULTANT**  
顧問公司

AECOM Asia Company Ltd.  
www.aecom.com

**SUB-CONSULTANTS**  
外聘工程師/顧問公司

**ISSUE/REVISION**  
修訂

| NO. | DATE | DESCRIPTION | CHK. |
|-----|------|-------------|------|
|     |      |             |      |
|     |      |             |      |
|     |      |             |      |
|     |      |             |      |
|     |      |             |      |

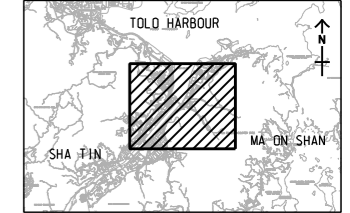
**STATUS**  
階段

**SCALE**  
比例

**DIMENSION UNIT**  
尺寸單位

A3 1: 16000      METRES

**KEY PLAN**    A3 1: 400000



**PROJECT NO.**  
項目編號

**CONTRACT NO.**  
合約編號

60334056      CE 30/2014 (DS)

**SHEET TITLE**  
圖紙名稱

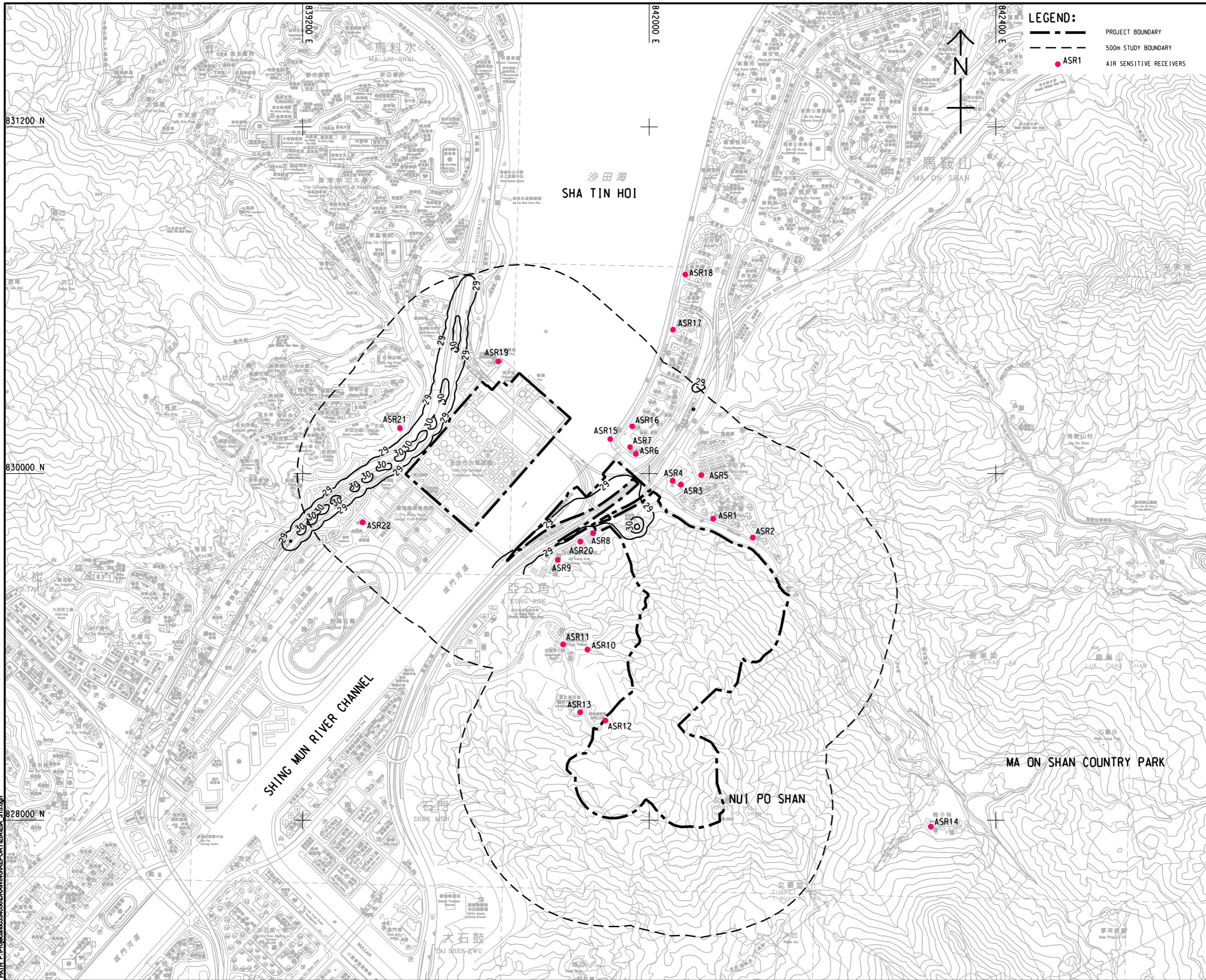
**CUMULATIVE ANNUAL RSP CONCENTRATION ( $\mu\text{g}/\text{m}^3$ ) AT 1.5 mAG (CONSTRUCTION OF CSTW) (MITIGATED SCENARIO)**

**SHEET NUMBER**  
圖紙編號

60334056/EIA/3.14

This drawing has been prepared for the use of AECOM's client. It may not be used, modified, reproduced or relied upon by third parties, except as agreed by AECOM or as required by law. AECOM accepts no responsibility, and denies any liability whatsoever, to any party, for losses or claims on this drawing without AECOM's express written consent. Do not scale this document. All measurements must be obtained from the stated dimensions.





**LEGEND:**

- PROJECT BOUNDARY
- 500m STUDY BOUNDARY
- ASR1
- AIR SENSITIVE RECEIVERS

**AECOM**

**PROJECT**  
項目  
**RELOCATION OF SHA TIN SEWAGE TREATMENT WORKS TO CAVERNS: CAVERNS AND SEWAGE TREATMENT WORKS - INVESTIGATION, DESIGN AND CONSTRUCTION**

**CLIENT**  
業主  
 渠務署  
Drainage Services Department

**CONSULTANT**  
顧問公司  
AECOM Asia Company Ltd.  
www.aecom.com

**SUB-CONSULTANTS**  
分判工程師/顧問公司

**ISSUE/REVISION**  
修訂

| NO. | DATE | DESCRIPTION | CHK. |
|-----|------|-------------|------|
|     |      |             |      |
|     |      |             |      |
|     |      |             |      |
|     |      |             |      |

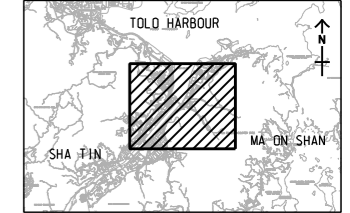
**STATUS**  
階段

**SCALE**  
比例

**DIMENSION UNIT**  
尺寸單位

A3 1: 16000      METRES

**KEY PLAN**    A3 1: 40000  
索引圖



**PROJECT NO.**  
項目編號

**CONTRACT NO.**  
合約編號

60334056      CE 30/2014 (DS)

**SHEET TITLE**  
圖紙名稱  
**CUMULATIVE ANNUAL FSP CONCENTRATION ( $\mu\text{g}/\text{m}^3$ ) AT 1.5 mAG (CONSTRUCTION OF CSTW) (MITIGATED SCENARIO)**

**SHEET NUMBER**  
圖紙編號  
60334056/EIA/3.15

This drawing has been prepared for the use of AECOM's client. It may not be used, modified, reproduced or relied upon by third parties, except as approved by AECOM or as required by law. AECOM accepts no responsibility, and denies any liability whatsoever, to any party, for losses or claims on this drawing without AECOM's express written consent. Do not scale this document. All measurements must be obtained from the stated dimensions.