

LEGEND:

- PROJECT BOUNDARY
- 500m STUDY BOUNDARY
- ASR1
- AIR SENSITIVE RECEIVERS



PROJECT
RELOCATION OF SHA TIN SEWAGE TREATMENT WORKS TO CAVERNS: CAVERNS AND SEWAGE TREATMENT WORKS - INVESTIGATION, DESIGN AND CONSTRUCTION

CLIENT
 渠務署
 Drainage Services Department

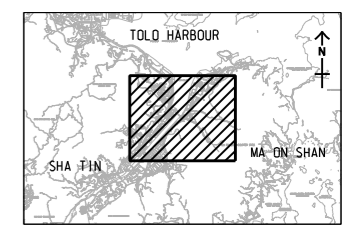
CONSULTANT
 AECOM Asia Company Ltd.
 www.aecom.com

SUB-CONSULTANTS
 分判工程顧問公司

ISSUE/REVISION

| NO. | DATE | DESCRIPTION | CHK. |
|-----|------|-------------|------|
| | | | |
| | | | |
| | | | |
| | | | |

SCALE
 A3 1: 16000
KEY PLAN A3 1: 40000

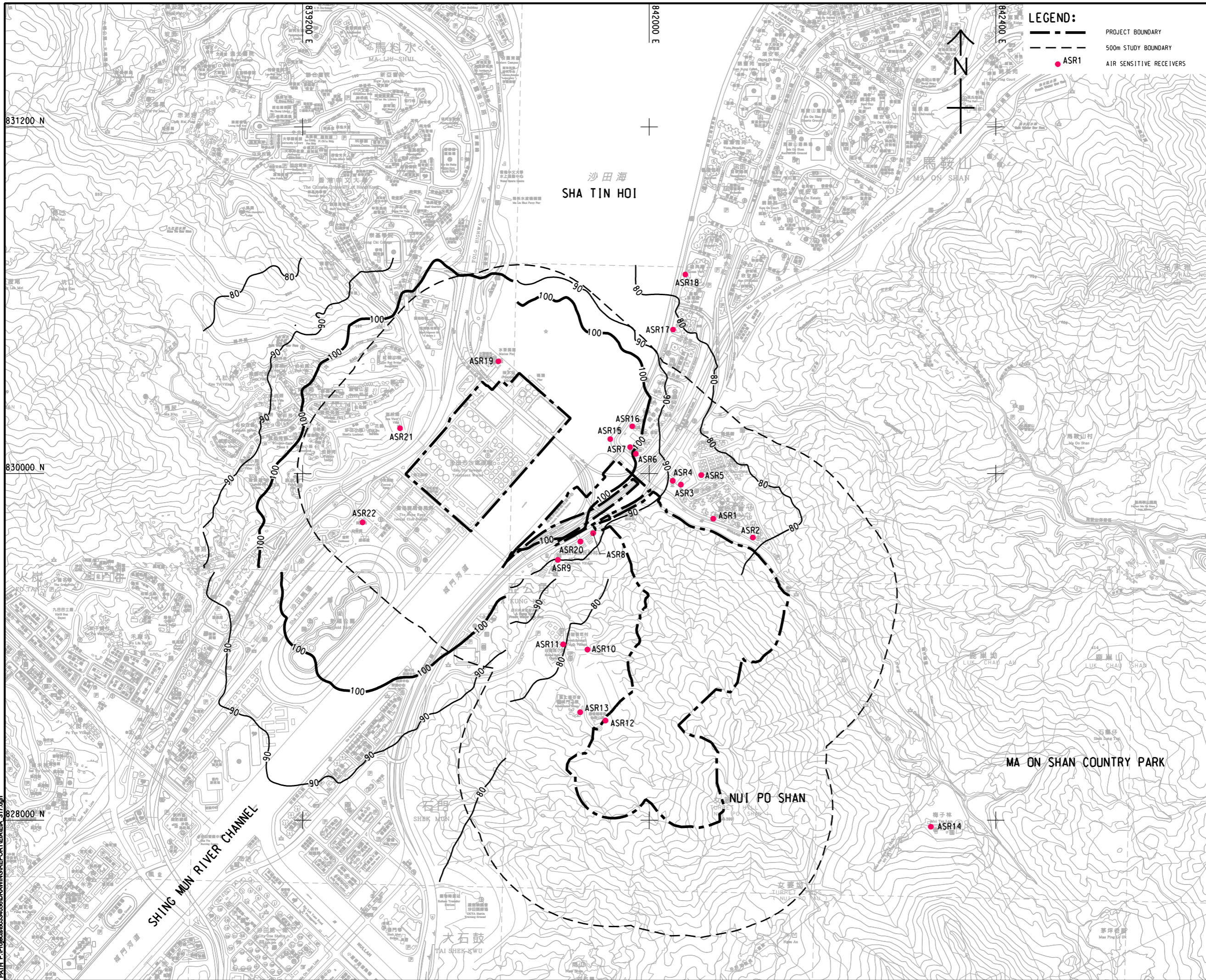


PROJECT NO. 60334056
CONTRACT NO. CE 30/2014 (DS)

SHEET TITLE
 MAXIMUM CUMULATIVE HOURLY TSP CONCENTRATION (µg/m³) AT 1.5 MAG (DEMOLITION OF EXISTING STSTW) (UNMITIGATED SCENARIO)

SHEET NUMBER
 60334056/EIA/3.16

This drawing has been prepared for the use of AECOM's client. It may not be used, modified, reproduced or relied upon by third parties, except as approved by AECOM or as required by law. AECOM accepts no responsibility, and denies any liability whatsoever, to any party, for losses or claims on this drawing without AECOM's express written consent. Do not scale this document. All measurements must be obtained from the sheet dimensions.



LEGEND:

- PROJECT BOUNDARY
- 500m STUDY BOUNDARY
- ASR1
- AIR SENSITIVE RECEIVERS



AECOM

PROJECT
RELOCATION OF SHA TIN SEWAGE TREATMENT WORKS TO CAVERNS: CAVERNS AND SEWAGE TREATMENT WORKS - INVESTIGATION, DESIGN AND CONSTRUCTION

CLIENT
渠務署
 Drainage Services Department

CONSULTANT
 AECOM Asia Company Ltd.
 www.aecom.com

SUB-CONSULTANTS
 分判工程顧問公司

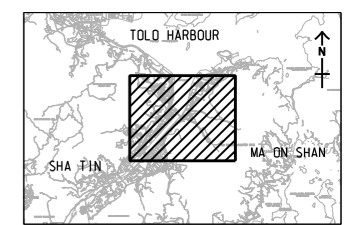
ISSUE/REVISION

| NO. | DATE | DESCRIPTION | CHK. |
|-----|------|-------------|------|
| | | | |
| | | | |
| | | | |
| | | | |

STATUS
 現狀

SCALE
 比例: A3 1: 16000

DIMENSION UNIT
 尺寸單位: METRES



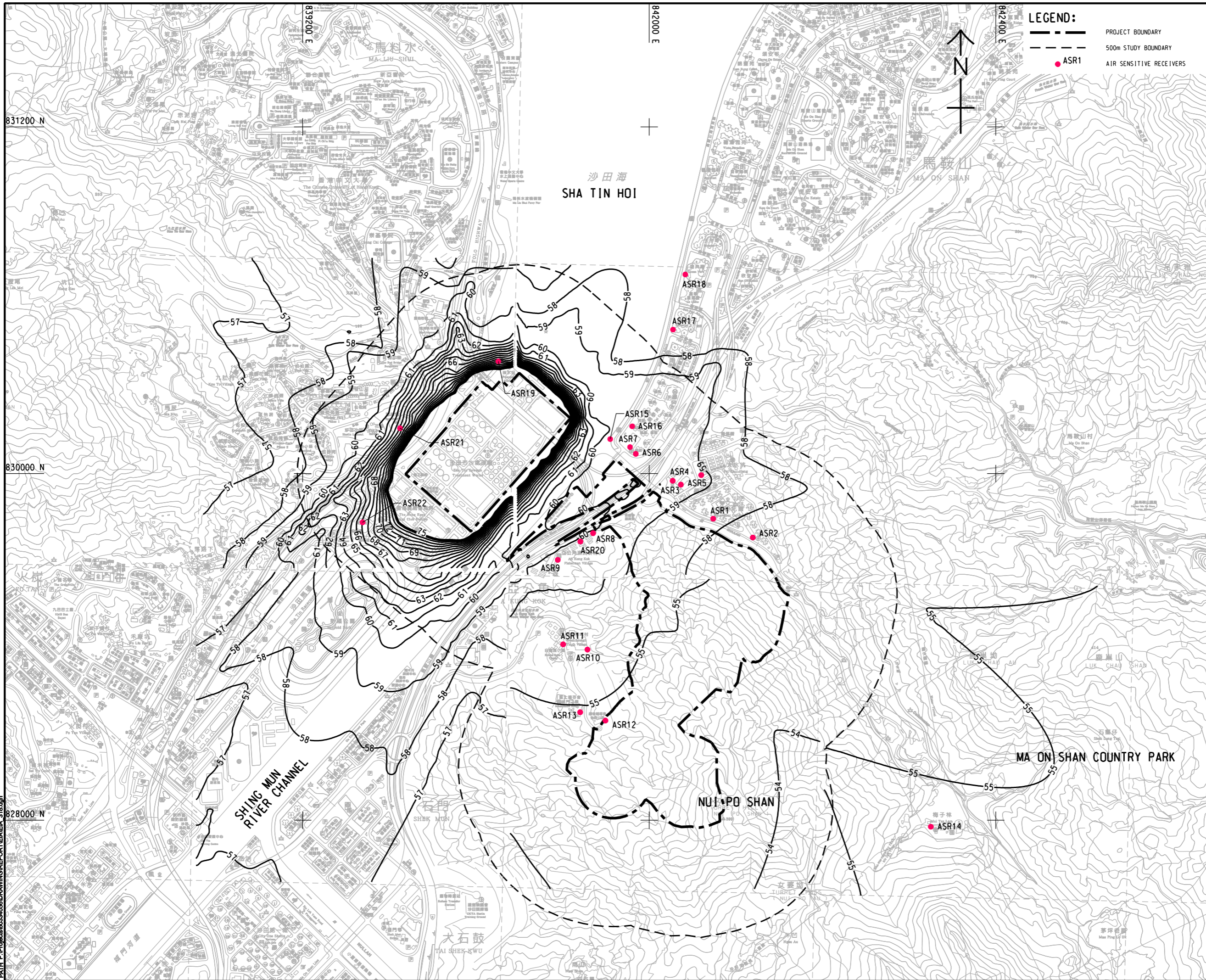
PROJECT NO.
 項目編號: 60334056

CONTRACT NO.
 合約編號: CE 30/2014 (DS)

SHEET TITLE
 圖紙名稱: 10th HIGHEST CUMULATIVE DAILY RSP CONCENTRATION (µg/m³) AT 1.5 mAG (DEMOLITION OF EXISTING STSTW) (UNMITIGATED SCENARIO)

SHEET NUMBER
 圖紙編號: 60334056/EIA/3.17

This drawing has been prepared for the use of AECOM's client. It may not be used, modified, reproduced or relied upon by third parties, except as required by law. AECOM accepts no responsibility, and denies any liability whatsoever, for any party that uses or relies on this drawing without AECOM's express written consent. Do not scale this document. All measurements must be obtained from the stated dimensions.



LEGEND:

- PROJECT BOUNDARY
- 500m STUDY BOUNDARY
- ASR1
- AIR SENSITIVE RECEIVERS

AECOM

PROJECT
項目

RELOCATION OF SHA TIN SEWAGE TREATMENT WORKS TO CAVERNS: CAVERNS AND SEWAGE TREATMENT WORKS - INVESTIGATION, DESIGN AND CONSTRUCTION

CLIENT
業主

渠務署
Drainage Services Department

CONSULTANT
顧問公司

AECOM Asia Company Ltd.
www.aecom.com

SUB-CONSULTANTS
分判工程師/顧問公司

ISSUE/REVISION
修訂

| NO. | DATE | DESCRIPTION | CHK. |
|-----|------|-------------|------|
| | | | |
| | | | |
| | | | |
| | | | |
| | | | |

STATUS
階段

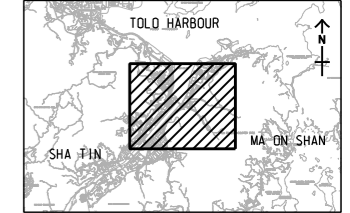
SCALE
比例

A3 1: 16000

DIMENSION UNIT
尺寸單位

METRES

KEY PLAN A3 1: 40000



PROJECT NO.
項目編號

60334056

CONTRACT NO.
合約編號

CE 30/2014 (DS)

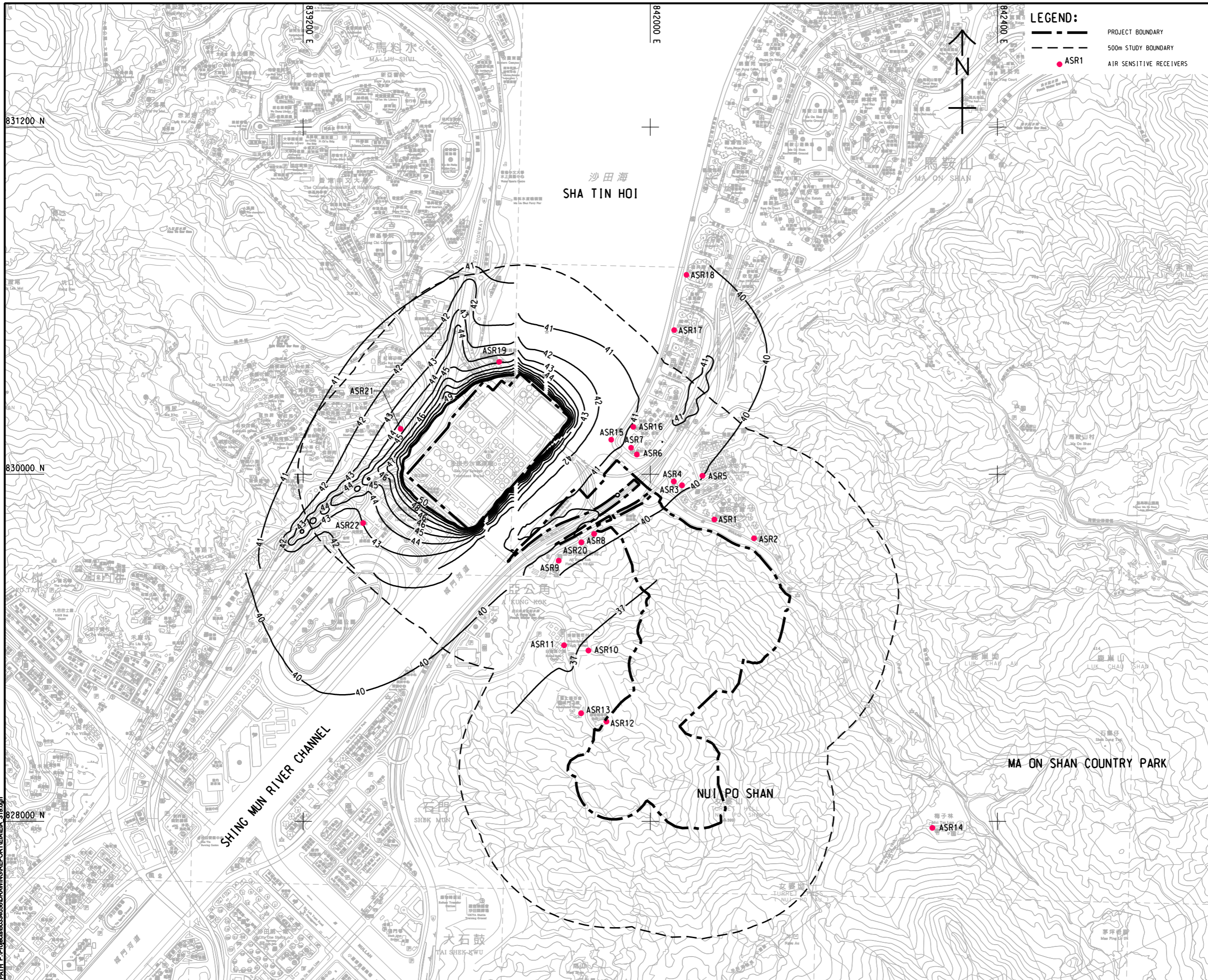
SHEET TITLE
圖紙名稱

10TH HIGHEST CUMULATIVE DAILY FSP CONCENTRATION ($\mu\text{g}/\text{m}^3$) AT 1.5 MAG (DEMOLITION OF EXISTING STSW) (UNMITIGATED SCENARIO)

SHEET NUMBER
圖紙編號

60334056/EIA/3.18

This drawing has been prepared for the use of AECOM's client. It may not be used, modified, reproduced or relied upon by third parties, except as required by law. AECOM accepts no responsibility, and denies any liability whatsoever, for any party that uses or relies on this drawing without AECOM's express written consent. Do not scale this document. All measurements must be obtained from the stated dimensions.



LEGEND:

- PROJECT BOUNDARY
- 500m STUDY BOUNDARY
- ASR1
- AIR SENSITIVE RECEIVERS



PROJECT
項目

RELOCATION OF SHA TIN SEWAGE TREATMENT WORKS TO CAVERNS: CAVERNS AND SEWAGE TREATMENT WORKS - INVESTIGATION, DESIGN AND CONSTRUCTION

CLIENT
業主

渠務署
Drainage Services Department

CONSULTANT
工程顧問公司

AECOM Asia Company Ltd.
www.aecom.com

SUB-CONSULTANTS
分判工程顧問公司

ISSUE/REVISION
修訂

| NO. | DATE | DESCRIPTION | CHK. |
|-----|------|-------------|------|
| | | | |
| | | | |
| | | | |
| | | | |

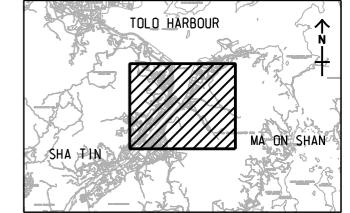
STATUS
階段

SCALE
比例

DIMENSION UNIT
尺寸單位

A3 1: 16000 METRES

KEY PLAN A3 1: 40000



PROJECT NO.
項目編號

60334056

CONTRACT NO.
合約編號

CE 30/2014 (DS)

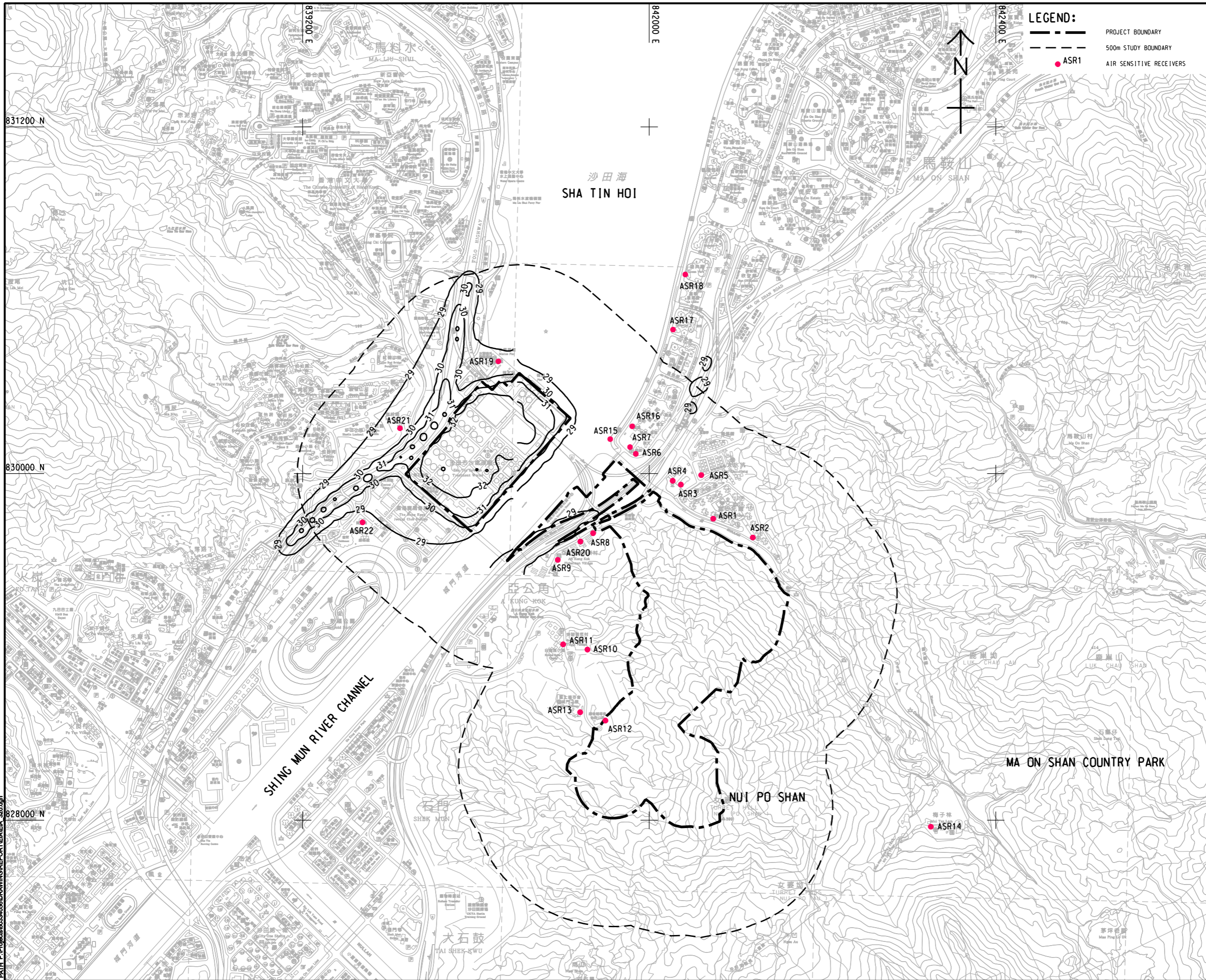
SHEET TITLE
圖紙名稱

CUMULATIVE ANNUAL RSP CONCENTRATION ($\mu\text{g}/\text{m}^3$) AT 1.5 MAG (DEMOLITION OF EXISTING STSW) (UNMITIGATED SCENARIO)

SHEET NUMBER
圖紙編號

60334056/EIA/3.19

This drawing has been prepared for the use of AECOM's client. It may not be used, modified, reproduced or relied upon by third parties, except as required by law. AECOM accepts no responsibility, and denies any liability whatsoever, to any party, for loss or damage of any kind, arising from the use of this drawing without AECOM's express written consent. Do not scale this document. All measurements must be obtained from the stated dimensions.



LEGEND:

- PROJECT BOUNDARY
- 500m STUDY BOUNDARY
- ASR1
- AIR SENSITIVE RECEIVERS

AECOM

PROJECT
項目

RELOCATION OF SHA TIN SEWAGE TREATMENT WORKS TO CAVERNS: CAVERNS AND SEWAGE TREATMENT WORKS - INVESTIGATION, DESIGN AND CONSTRUCTION

CLIENT
業主

渠務署
Drainage Services Department

CONSULTANT
工程顧問公司

AECOM Asia Company Ltd.
www.aecom.com

SUB-CONSULTANTS
分判工程顧問公司

ISSUE/REVISION
修訂

| IR | DATE | DESCRIPTION | CHK. |
|----|------|-------------|------|
| | | | |
| | | | |
| | | | |
| | | | |

STATUS
階段

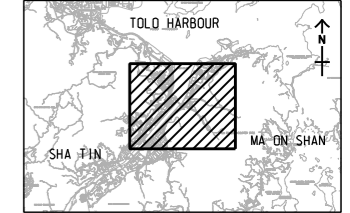
SCALE
比例

A3 1: 16000

DIMENSION UNIT
尺寸單位

METRES

KEY PLAN A3 1: 40000



PROJECT NO.
項目編號

60334056

CONTRACT NO.
合約編號

CE 30/2014 (DS)

SHEET TITLE
圖紙名稱

CUMULATIVE ANNUAL FSP CONCENTRATION ($\mu\text{g}/\text{m}^3$) AT 1.5 mAG (DEMOLITION OF EXISTING STSW) (UNMITIGATED SCENARIO)

SHEET NUMBER
圖紙編號

60334056/EIA/3.20

This drawing has been prepared for the use of AECOM's client. It may not be used, modified, reproduced or relied upon by third parties, except as agreed by AECOM or as required by law. AECOM accepts no responsibility, and denies any liability whatsoever, to any party, for loss or damage of any kind, arising from the use of this drawing without AECOM's express written consent. Do not scale this document. All measurements must be obtained from the stated dimensions.