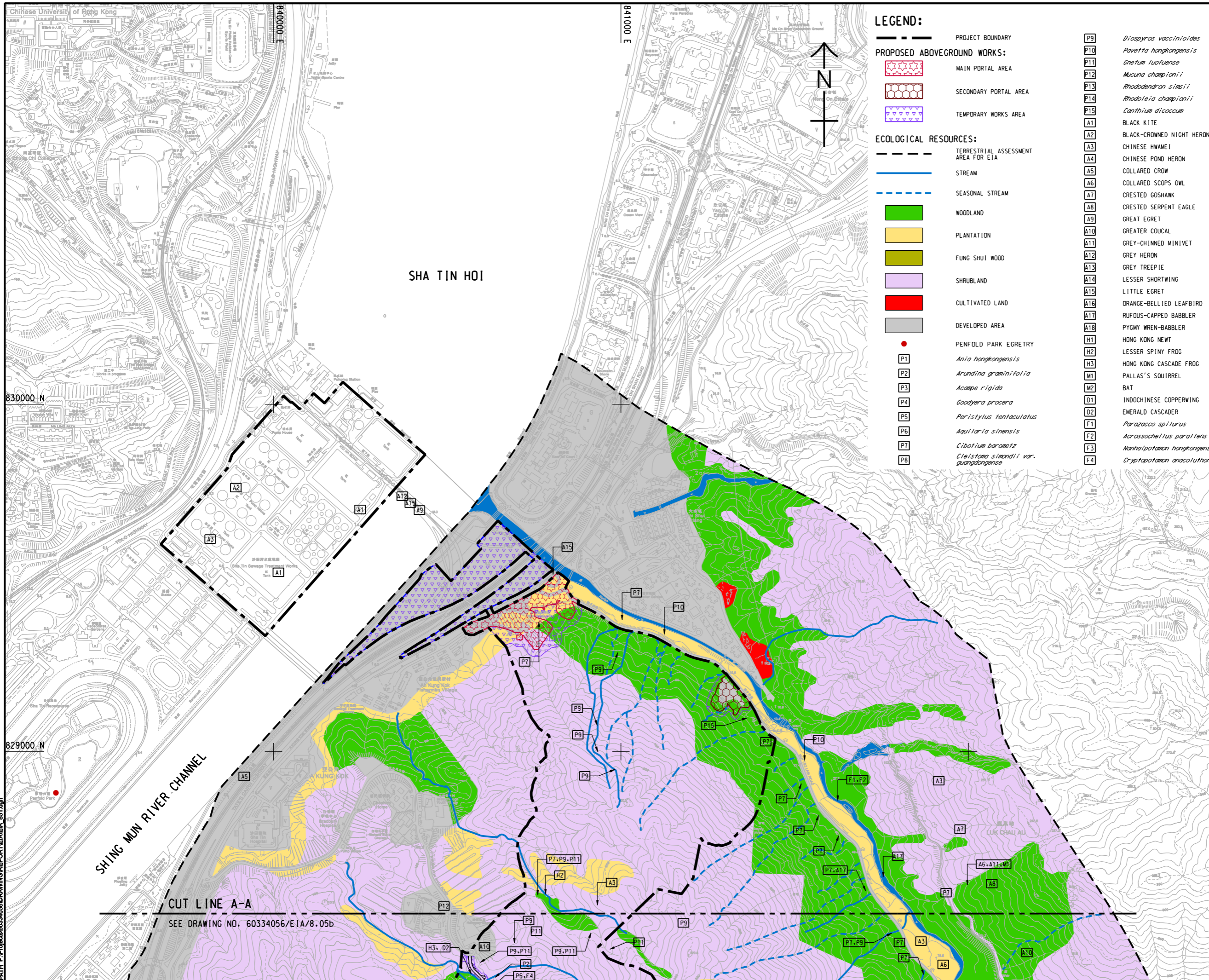


ISO A1 594mm x 841mm
 Approved:
 Checked:
 Designer:
 Project Management Initials:
 2016/07/15
 PATH P:\Project\60334056\DRAWING\REPORT\EA\EA_051.dgn



LEGEND:

- PROJECT BOUNDARY**
--- PROJECT BOUNDARY
- PROPOSED ABOVEGROUND WORKS:**
- MAIN PORTAL AREA
 - SECONDARY PORTAL AREA
 - TEMPORARY WORKS AREA
- ECOLOGICAL RESOURCES:**
- TERRESTRIAL ASSESSMENT AREA FOR EIA
 - STREAM
 - SEASONAL STREAM
 - WOODLAND
 - PLANTATION
 - FUNG SHUI WOOD
 - SHRUBLAND
 - CULTIVATED LAND
 - DEVELOPED AREA
 - PENFOLD PARK EGRETRY

- P9 *Diospyros vaccinioides*
- P10 *Pavetta hongkongensis*
- P11 *Oreum luofuense*
- P12 *Mucuna championii*
- P13 *Rhododendron simsii*
- P14 *Rhodoletia championii*
- P15 *Canthium dicoccum*
- A1 BLACK KITE
- A2 BLACK-CROWNED NIGHT HERON
- A3 CHINESE HWAMEI
- A4 CHINESE POND HERON
- A5 COLLARED CROW
- A6 COLLARED SCOPS OWL
- A7 CRESTED GOSHAWK
- A8 CRESTED SERPENT EAGLE
- A9 GREAT EGRET
- A10 GREATER COUCAL
- A11 GREY-CHINNED MINIVET
- A12 GREY HERON
- A13 GREY TREEPIE
- A14 LESSER SHORTWING
- A15 LITTLE EGRET
- A16 ORANGE-BELLIED LEAFBIRD
- A17 RUFUS-CAPPED BABBLER
- A18 PYGMY WREN-BABBLER
- H1 HONG KONG NEWT
- H2 LESSER SPINY FROG
- H3 HONG KONG CASCADE FROG
- M1 PALLAS'S SOURIREL
- M2 BAT
- D1 INDOCHINESE COPPERWING
- D2 EMERALD CASCADER
- F1 *Parazacco spilurus*
- F2 *Acrossocheilus parviflens*
- F3 *Nanhaipotamon hongkongense*
- F4 *Cryptopotamon anacolutum*



PROJECT
項目

RELOCATION OF SHA TIN SEWAGE TREATMENT WORKS TO CAVERNS: CAVERNS AND SEWAGE TREATMENT WORKS - INVESTIGATION, DESIGN AND CONSTRUCTION

CLIENT
業主

渠務署
Drainage Services Department

CONSULTANT
工程顧問公司

AECOM Asia Company Ltd.
www.aecom.com

SUB-CONSULTANTS
分門工程顧問公司

ISSUE/REVISION
更改

| IR | DATE | DESCRIPTION | CHK |
|----|------|-------------|-----|
| | | | |
| | | | |
| | | | |

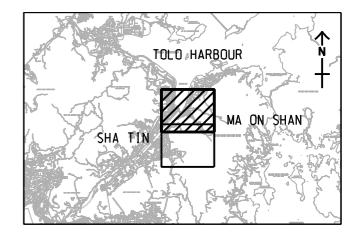
STATUS
階段

SCALE
比例

A3 1: 10000

DIMENSION UNIT
尺寸單位

METRES



PROJECT NO.
項目編號

60334056

CONTRACT NO.
合約編號

CE 30/2014 (DS)

SHEET TITLE
圖紙名稱

HABITAT MAP AND LOCATION OF PROPOSED ABOVEGROUND WORKS

SHEET NUMBER
圖紙編號

60334056/E1A/8.05a

SHEET 1 OF 2

This drawing has been prepared for the use of AECOM's client. It may not be used, modified, reproduced or relied upon by third parties, except as agreed by AECOM or as required by law. AECOM accepts no responsibility, and does not warrant, for any party that uses or relies on this drawing without AECOM's express written consent. Do not scale this document. All measurements must be obtained from the related dimensions.