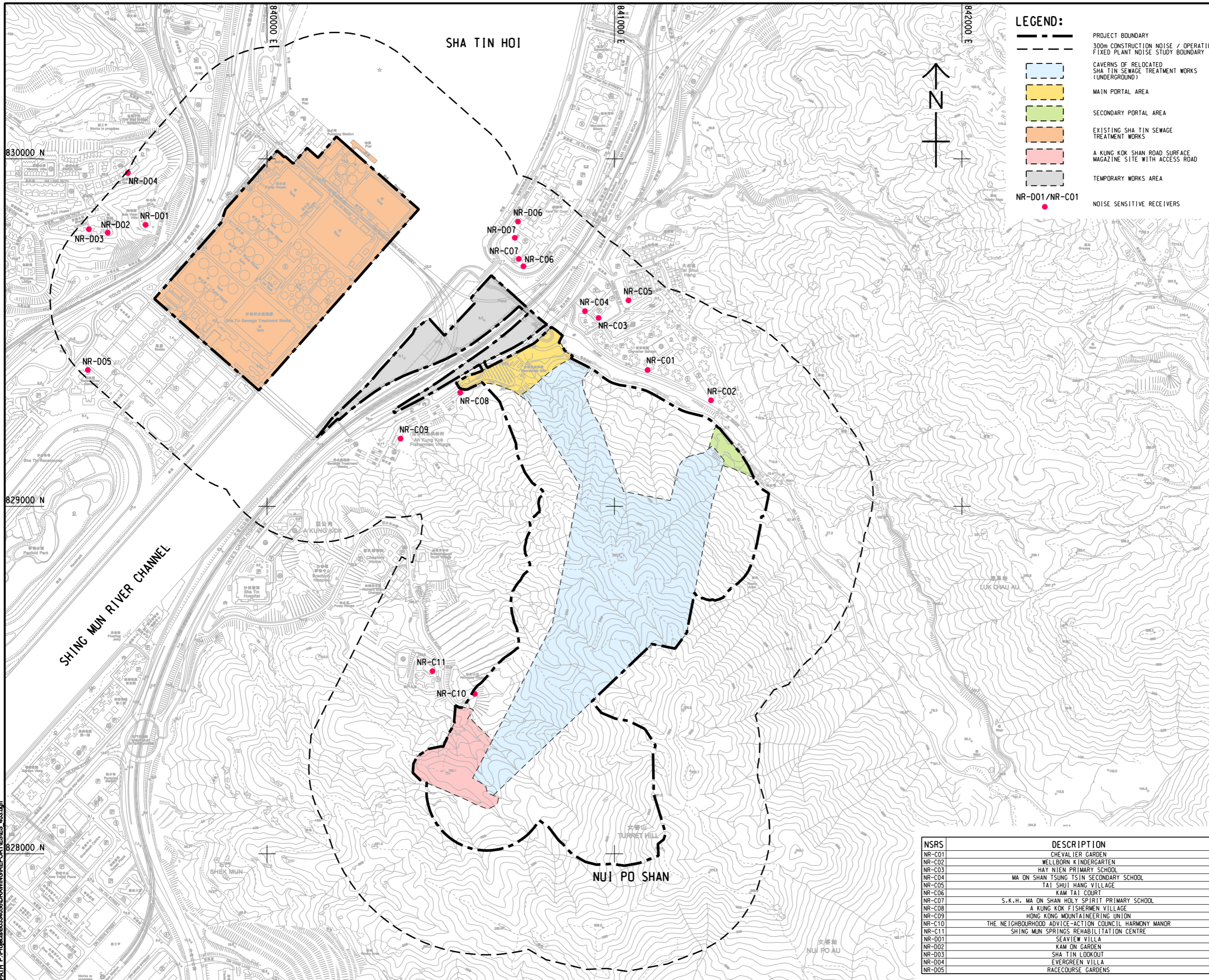


ISO A1 594mm x 841mm
 Approved:
 Checked:
 Designer:
 Project Management Initials:
 Pld File by: PENGMW 2016/05/24
 PATH: P:\Project\60334056\DRAWING\REPORTS\ES_403.dgn



LEGEND:

- PROJECT BOUNDARY
- 300m CONSTRUCTION NOISE / OPERATION FIXED PLANT NOISE STUDY BOUNDARY
- CAVERNS OF RELOCATED SHA TIN SEWAGE TREATMENT WORKS (UNDERGROUND)
- MAIN PORTAL AREA
- SECONDARY PORTAL AREA
- EXISTING SHA TIN SEWAGE TREATMENT WORKS
- A KUNG KOK SHAN ROAD SURFACE MAGAZINE SITE WITH ACCESS ROAD
- TEMPORARY WORKS AREA
- NR-D01/NR-C01 NOISE SENSITIVE RECEIVERS

AECOM

PROJECT
 項目
RELOCATION OF SHA TIN SEWAGE TREATMENT WORKS TO CAVERNS: CAVERNS AND SEWAGE TREATMENT WORKS - INVESTIGATION, DESIGN AND CONSTRUCTION

CLIENT
 業主
 渠務署
 Drainage Services Department

CONSULTANT
 工程顧問公司
 AECOM Asia Company Ltd.
 www.aecom.com

SUB-CONSULTANTS
 分判工程顧問公司

ISSUE/REVISION
 修訂

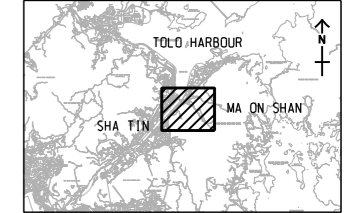
NO.	DATE	DESCRIPTION	CHK.

STATUS
 圖況

SCALE
 比例
 A3 1: 10000

DIMENSION UNIT
 尺寸單位
 METRES

KEY PLAN A3 1: 50000
 索引圖



NSRS	DESCRIPTION
NR-C01	CHEVAL TIER GARDEN
NR-C02	WELLBORN KINDERGARTEN
NR-C03	HAY NIEN PRIMARY SCHOOL
NR-C04	MA ON SHAN TSUNG TSIM SECONDARY SCHOOL
NR-C05	TAI SHUI HANG VILLAGE
NR-C06	KAM TAI COURT
NR-C07	S.K.H. MA ON SHAN HOLY SPIRIT PRIMARY SCHOOL
NR-C08	A KUNG KOK FISHERMEN VILLAGE
NR-C09	HONG KONG MOUNTAINEERING UNION
NR-C10	THE NEIGHBOURHOOD ADVICE-ACTION COUNCIL HARMONY MANOR
NR-C11	SHING MUN SPRINGS REHABILITATION CENTRE
NR-D01	SEAVIEW VILLA
NR-D02	KAM ON GARDEN
NR-D03	SHA TIN LOOKOUT
NR-D04	EVERGREEN VILLA
NR-D05	RACECOURSE GARDENS

PROJECT NO.
 項目編號
 60334056

CONTRACT NO.
 合約編號
 CE 30/2014 (DS)

SHEET TITLE
 圖名
 LOCATIONS OF REPRESENTATIVE NOISE SENSITIVE RECEIVERS FOR CONSTRUCTION NOISE AND OPERATION FIXED PLANT NOISE

SHEET NUMBER
 圖號
 60334056/ES/4.03

This drawing has been prepared for the use of AECOM's client. It may not be used, modified, reproduced or relied upon by third parties, except as approved by AECOM or as required by law. AECOM accepts no responsibility, and denies any liability whatsoever, for any party that uses or relies on this drawing without AECOM's express written consent. Do not scale this document. All measurements must be obtained from the sheet dimensions.