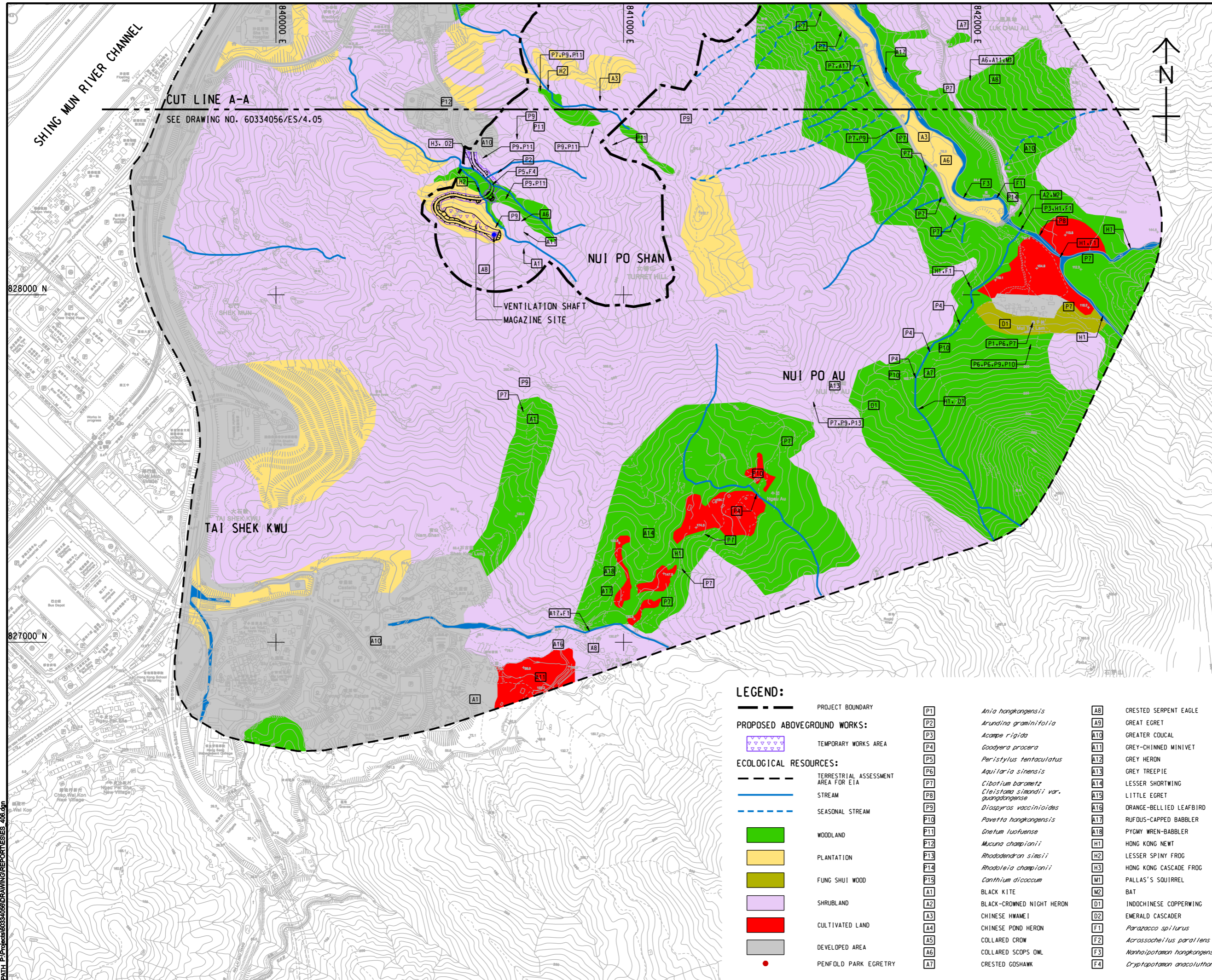


ISO A1 594mm x 841mm
 Approved:
 Checked:
 Designer:
 Project Management Initials:
 2016/02/22
 P:\Projects\60334056\DRAWING\REPORTS\ES_408.dgn
 P:\Projects\60334056\DRAWING\REPORTS_408.dgn



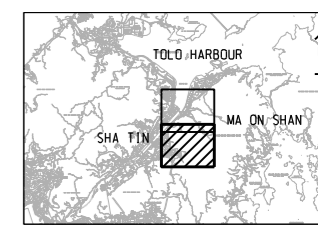
ISSUE/REVISION

NO.	DATE	DESCRIPTION	CHK.

STATUS
 核准

SCALE
 1:10000
DIMENSION UNIT
 METRES

KEY PLAN A3 1:50000



LEGEND:

- PROJECT BOUNDARY
- PROPOSED ABOVEGROUND WORKS: TEMPORARY WORKS AREA
- ECOLOGICAL RESOURCES: TERRESTRIAL ASSESSMENT AREA FOR EIA
- STREAM
- SEASONAL STREAM
- WOODLAND
- PLANTATION
- FUNG SHUI WOOD
- SHRUBLAND
- CULTIVATED LAND
- DEVELOPED AREA
- PENFOLD PARK EGRETRY

- | | | | |
|-----|---|-----|----------------------------------|
| P1 | <i>Ania hongkongensis</i> | A8 | CRESTED SERPENT EAGLE |
| P2 | <i>Arundina graminifolia</i> | A9 | GREAT EGRET |
| P3 | <i>Acampe rigida</i> | A10 | GREATER COUCAL |
| P4 | <i>Goodyera procera</i> | A11 | GREY-CHINNED MINIVET |
| P5 | <i>Peristylus tentaculatus</i> | A12 | GREY HERON |
| P6 | <i>Aquilaia sinensis</i> | A13 | GREY TREEPIE |
| P7 | <i>Cibotium barometz</i> | A14 | LESSER SHORTWING |
| P8 | <i>Cleistoma simandii</i> var. <i>guangdongense</i> | A15 | LITTLE EGRET |
| P9 | <i>Diospyros vaccinioides</i> | A16 | ORANGE-BELLIED LEAFBIRD |
| P10 | <i>Pavetta hongkongensis</i> | A17 | RUFIOUS-CAPPED BABBLER |
| P11 | <i>Gnetum luofuense</i> | A18 | PYGMY WREN-BABBLER |
| P12 | <i>Mucuna championii</i> | H1 | HONG KONG NEWT |
| P13 | <i>Rhododendron simsii</i> | H2 | LESSER SPINY FROG |
| P14 | <i>Rhodoleia championii</i> | H3 | HONG KONG CASCADE FROG |
| P15 | <i>Canthium dicoccum</i> | M1 | PALLAS'S SOUIRREL |
| A1 | BLACK KITE | M2 | BAT |
| A2 | BLACK-CROWNED NIGHT HERON | D1 | INDOCHINESE COPPERWING |
| A3 | CHINESE HWAMEI | D2 | EMERALD CASCADE |
| A4 | CHINESE POND HERON | F1 | <i>Parazacco spilurus</i> |
| A5 | COLLARED CROW | F2 | <i>Acrossocheilus parviflens</i> |
| A6 | COLLARED SCOPS OWL | F3 | <i>Nanhaiptaman hongkongense</i> |
| A7 | CRESTED GOSHAWK | F4 | <i>Cryptopotamon anacoluthon</i> |

This drawing has been prepared for the use of AECOM's client. It may not be used, modified, reproduced or relied upon by third parties, except as agreed by AECOM or as required by law. AECOM accepts no responsibility, and denies any liability whatsoever, for any party that uses or relies on this drawing without AECOM's express written consent. Do not scale this document. All measurements must be obtained from the stated dimensions.

PROJECT NO.
 60334056
CONTRACT NO.
 CE 30/2014 (DS)

SHEET TITLE
 HABITAT MAP

SHEET NUMBER
 60334056/ES/4.06