



View REC1 – Existing Condition



View REC1 – Without Mitigation Measures

A	FIRST ISSUE	EN	03/15
Rev	Description	By	Date

Consultant  
**ARUP**

Contract No. and Title  
 Agreement No. CE 32/2014 (HY)  
 Elevated Pedestrian Corridor in  
 Yuen Long Town connecting with  
 Long Ping Station  
 – Investigation, Design and Construction

Drawing title  
 VIEWPOINT NO. 1 PHOTOMONTAGE  
 FROM REC1 EXISTING AND  
 WITHOUT MITIGATION MEASURES  
 Existing and Without Mitigation  
 Measures (Sheet 1 of 2)

Drawing no.		Rev.	
10.1702			
Drawn	Date	Checked	Approved
RY	01/15	KYL	EC
Scale		Status	
N.T.S.		PRELIMINARY	

COPYRIGHT RESERVED



View REC1 – Day 1 with Mitigation Measures



View REC1 – Year 10 with Mitigation Measures

Rev	Description	By	Date
A	FIRST ISSUE	EN	03/15
Consultant			
<b>ARUP</b>			
Contract No. and Title			
Agreement No. CE 32/2014 (HY) Elevated Pedestrian Corridor in Yuen Long Town connecting with Long Ping Station – Investigation, Design and Construction			
Drawing title			
VIEWPOINT NO. 1 PHOTOMONTAGE FROM REC1 Day 1 and Year 10 with Mitigation Measures (Sheet 2 of 2)			
Drawing no.		Rev.	
10.1703			
Drawn	Date	Checked	Approved
RY	01/15	KYL	EC
Scale		Status	
N.T.S.		PRELIMINARY	



Yuen Long Mansion

Yuen Fat House

Existing Yuen Long Nullah

Hi Lee Path

View REC3 – Existing Condition



Yuen Long Mansion

Yuen Fat House

Beautification Works of the Nullah  
(By Others)

Hi Lee Path

View REC3 – Without Mitigation Measures

Rev	Description	By	Date
A	FIRST ISSUE	EN	03/15

Consultant  
**ARUP**

Contract No. and Title  
 Agreement No. CE 32/2014 (HY)  
 Elevated Pedestrian Corridor in  
 Yuen Long Town connecting with  
 Long Ping Station  
 – Investigation, Design and Construction

Drawing title  
 VIEWPOINT NO. 2 PHOTOMONTAGE  
 FROM REC3 EXISTING AND  
 WITHOUT MITIGATION MEASURES  
 Existing and Without Mitigation  
 Measures (Sheet 1 of 2)

Drawing no.		Rev.	
10.1704			
Drawn	Date	Checked	Approved
RY	01/15	KYL	EC
Scale		Status	
N.T.S.		PRELIMINARY	

COPYRIGHT RESERVED



View REC3 – Day 1 with Mitigation Measures



View REC3 – Year 10 with Mitigation Measures

Rev	Description	By	Date
A	FIRST ISSUE	EN	03/15

Consultant  
**ARUP**

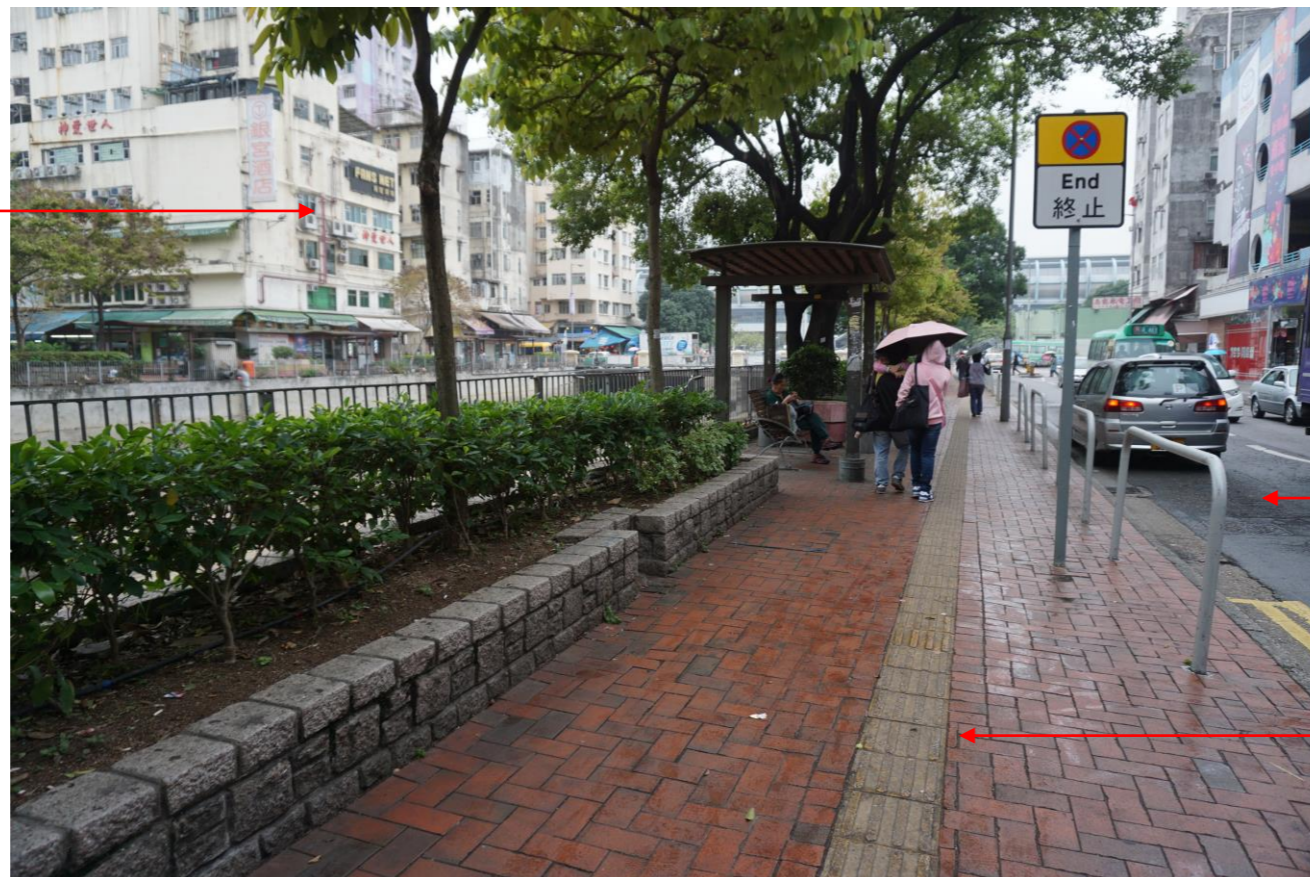
Contract No. and Title  
 Agreement No. CE 32/2014 (HY)  
 Elevated Pedestrian Corridor in  
 Yuen Long Town connecting with  
 Long Ping Station  
 – Investigation, Design and Construction

Drawing title  
 VIEWPOINT NO. 2 PHOTOMONTAGE  
 FROM REC3  
 Day 1 and Year 10 with Mitigation  
 Measures (Sheet 2 of 2)

Drawing no.		10.1705		Rev.
Drawn	Date	Checked	Approved	
RY	01/15	KYL	EC	
Scale		Status		
N.T.S.		PRELIMINARY		

COPYRIGHT RESERVED

Fuk Yip Building



Sau Fu Street

Yuen Fat Path

View REC4 – Existing Condition

Fuk Yip Building



Sau Fu Street

Yuen Fat Path

View REC4 – Without Mitigation Measures

A	FIRST ISSUE	EN	03/15
Rev	Description	By	Date

Consultant  
**ARUP**

Contract No. and Title  
 Agreement No. CE 32/2014 (HY)  
 Elevated Pedestrian Corridor in  
 Yuen Long Town connecting with  
 Long Ping Station  
 – Investigation, Design and Construction

Drawing title  
 VIEWPOINT NO. 3 PHOTOMONTAGE  
 FROM REC4 EXISTING AND  
 WITHOUT MITIGATION MEASURES  
 Existing and Without Mitigation  
 Measures (Sheet 1 of 2)

Drawing no.		10.1706		Rev.
Drawn	Date	Checked	Approved	
RY	01/15	KYL	EC	
Scale		Status		
N.T.S.		PRELIMINARY		

COPYRIGHT RESERVED



View REC4 – Day 1 with Mitigation Measures



View REC4 – Year 10 with Mitigation Measures

A	FIRST ISSUE	EN	03/15
Rev	Description	By	Date
Consultant			
<b>ARUP</b>			
Contract No. and Title			
Agreement No. CE 32/2014 (HY) Elevated Pedestrian Corridor in Yuen Long Town connecting with Long Ping Station – Investigation, Design and Construction			
Drawing title			
VIEWPOINT NO. 3 PHOTOMONTAGE FROM REC4 Day 1 and Year 10 with Mitigation Measures (Sheet 2 of 2)			
Drawing no.		Rev.	
10.1707			
Drawn	Date	Checked	Approved
RY	01/15	KYL	EC
Scale		Status	
N.T.S.		PRELIMINARY	



Cheong Shing Path

Yuen Long Mansion

Chung Sing Path Playground

Chun Kwong Primary School

Existing Yuen Long Nullah

View REC7 – Existing Condition



Cheong Shing Path

Yuen Long Mansion

Chung Sing Path Playground

Chun Kwong Primary School

Beautification Works of the Nullah  
(By Others)

View REC7 – Without Mitigation Measures

A		FIRST ISSUE		EN	03/15
Rev	Description	By	Date		
Consultant					
<b>ARUP</b>					
Contract No. and Title					
Agreement No. CE 32/2014 (HY) Elevated Pedestrian Corridor in Yuen Long Town connecting with Long Ping Station – Investigation, Design and Construction					
Drawing title					
VIEWPOINT NO. 4 PHOTOMONTAGE FROM REC7 EXISTING AND WITHOUT MITIGATION MEASURES Existing and Without Mitigation Measures (Sheet 1 of 2)					
Drawing no.				Rev.	
10.1708					
Drawn	Date	Checked	Approved		
RY	01/15	KYL	EC		
Scale		Status			
N.T.S.		PRELIMINARY			

COPYRIGHT RESERVED



View REC7 – Day 1 with Mitigation Measures



View REC7 – Year 10 with Mitigation Measures

Rev	Description	By	Date
A	FIRST ISSUE	EN	03/15

Consultant  
**ARUP**

Contract No. and Title  
 Agreement No. CE 32/2014 (HY)  
 Elevated Pedestrian Corridor in  
 Yuen Long Town connecting with  
 Long Ping Station  
 – Investigation, Design and Construction

Drawing title  
 VIEWPOINT NO. 4 PHOTOMONTAGE  
 FROM REC7  
 Day 1 and Year 10 with Mitigation  
 Measures (Sheet 2 of 2)

Drawing no. 10.1709		Rev.	
Drawn RY	Date 01/15	Checked KYL	Approved EC
Scale N.T.S.		Status PRELIMINARY	

COPYRIGHT RESERVED





View REC9 – Existing Condition



View REC9 – Without Mitigation Measures

Rev	Description	By	Date
A	FIRST ISSUE	EN	03/15

Consultant  
**ARUP**

Contract No. and Title  
 Agreement No. CE 32/2014 (HY)  
 Elevated Pedestrian Corridor in  
 Yuen Long Town connecting with  
 Long Ping Station  
 – Investigation, Design and Construction

Drawing title  
 VIEWPOINT NO. 5 PHOTOMONTAGE  
 FROM REC9 EXISTING AND  
 WITHOUT MITIGATION MEASURES  
 Existing and Without Mitigation  
 Measures (Sheet 1 of 2)

Drawing no.		10.1710		Rev.
Drawn	Date	Checked	Approved	
RY	01/15	KYL	EC	
Scale		Status		
N.T.S.		PRELIMINARY		

COPYRIGHT RESERVED

OM2, OM3

OM4



Beautification Works of the Nullah  
(By others)

View REC9 – Day 1 with Mitigation Measures

OM2, OM3

OM4



Beautification Works of the Nullah  
(By others)

View REC9 – Year 10 with Mitigation Measures

Rev	Description	By	Date
A	FIRST ISSUE	EN	03/15

Consultant  
**ARUP**

Contract No. and Title  
 Agreement No. CE 32/2014 (HY)  
 Elevated Pedestrian Corridor in  
 Yuen Long Town connecting with  
 Long Ping Station  
 – Investigation, Design and Construction

Drawing title  
 VIEWPOINT NO. 5 PHOTOMONTAGE  
 FROM REC9  
 Day 1 and Year 10 with Mitigation  
 Measures (Sheet 2 of 2)

Drawing no.		Rev.	
10.1711			
Drawn	Date	Checked	Approved
RY	01/15	KYL	EC
Scale		Status	
N.T.S.		PRELIMINARY	

COPYRIGHT RESERVED

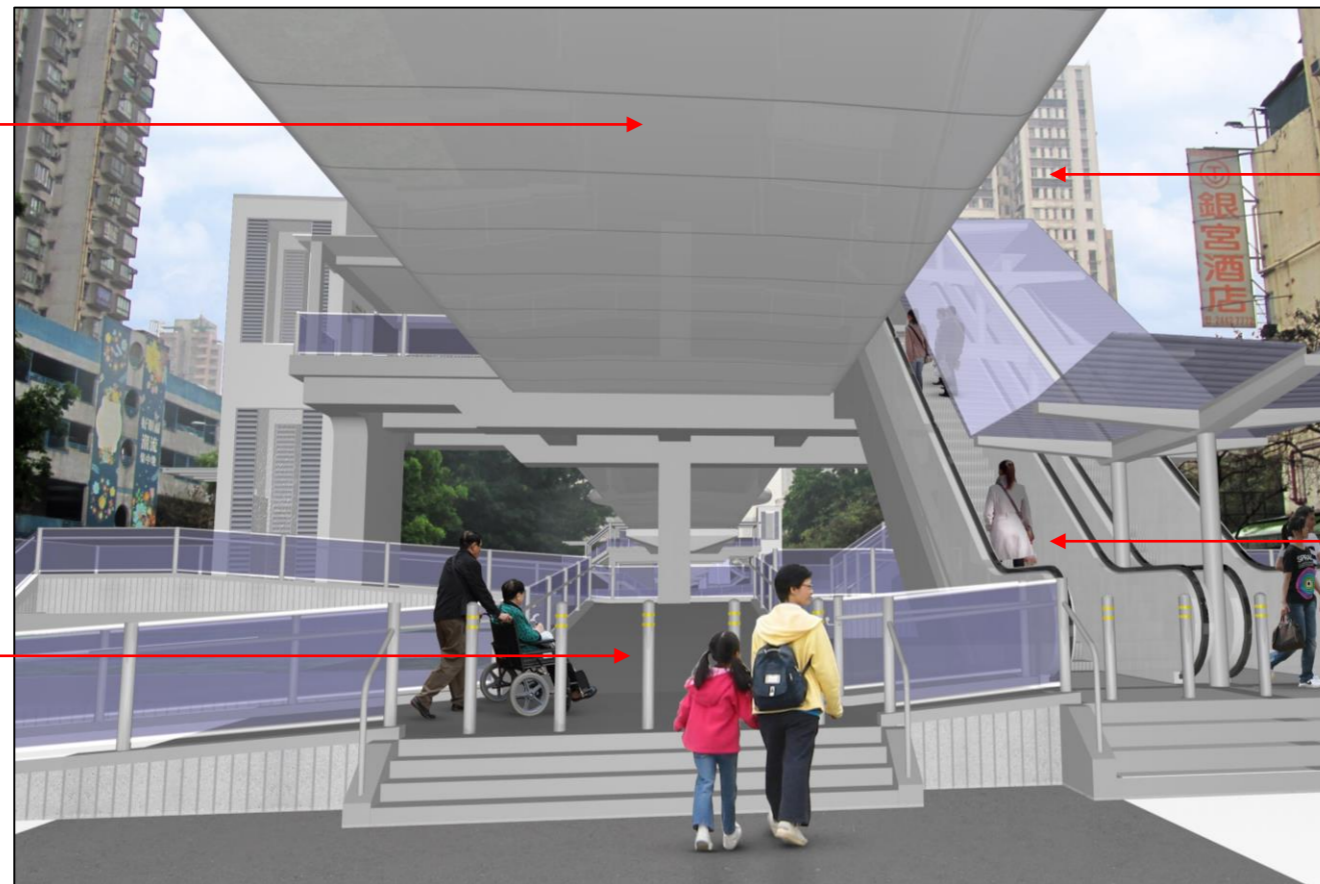


Healy Building

Hi Lee Path

Existing Yuen Long Nullah

View REC2 – Existing Condition



Proposed Footbridge

Healy Building

Proposed escalator

Proposed Interchange

View REC2 – Without Mitigation Measures

Rev	Description	By	Date
A	FIRST ISSUE	EN	03/15

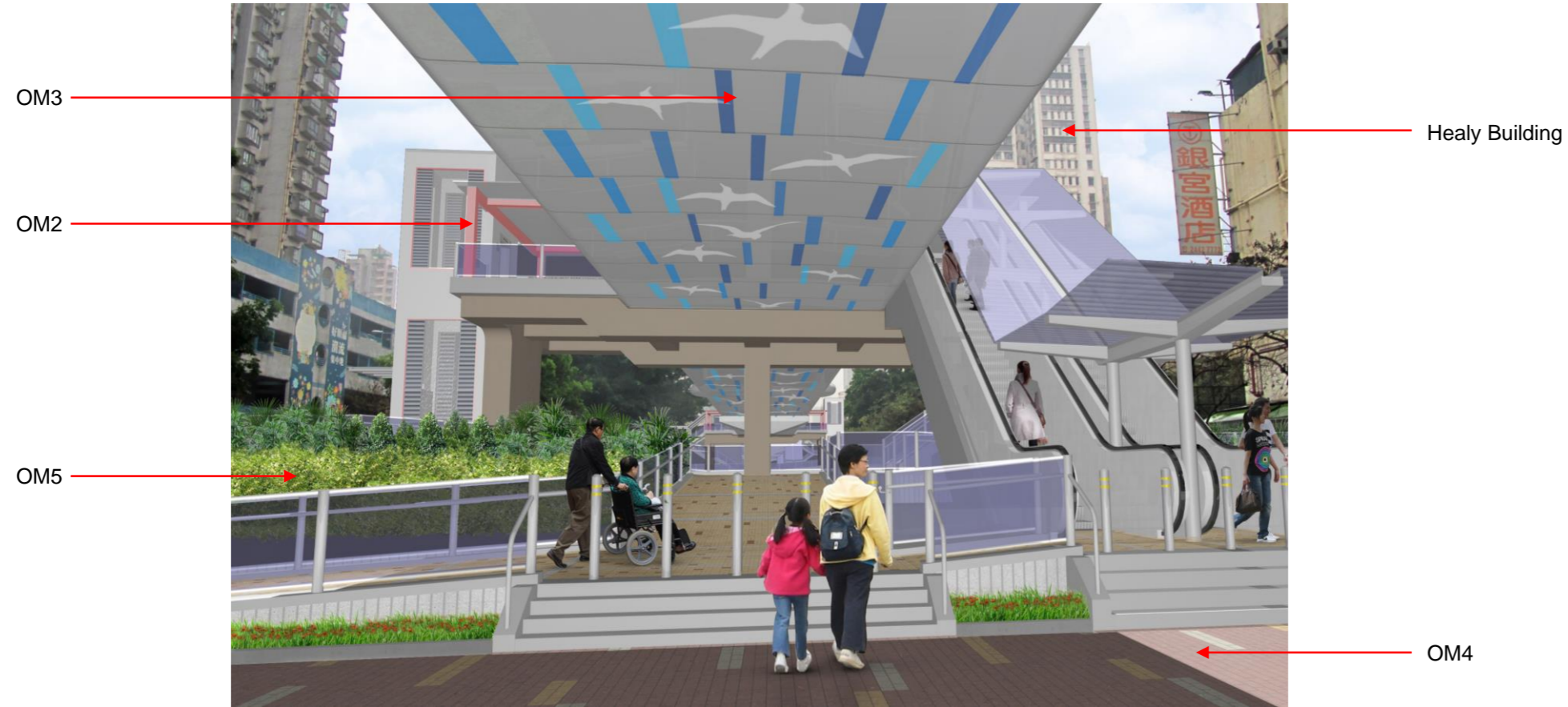
Consultant  
**ARUP**

Contract No. and Title  
 Agreement No. CE 32/2014 (HY)  
 Elevated Pedestrian Corridor in  
 Yuen Long Town connecting with  
 Long Ping Station  
 – Investigation, Design and Construction

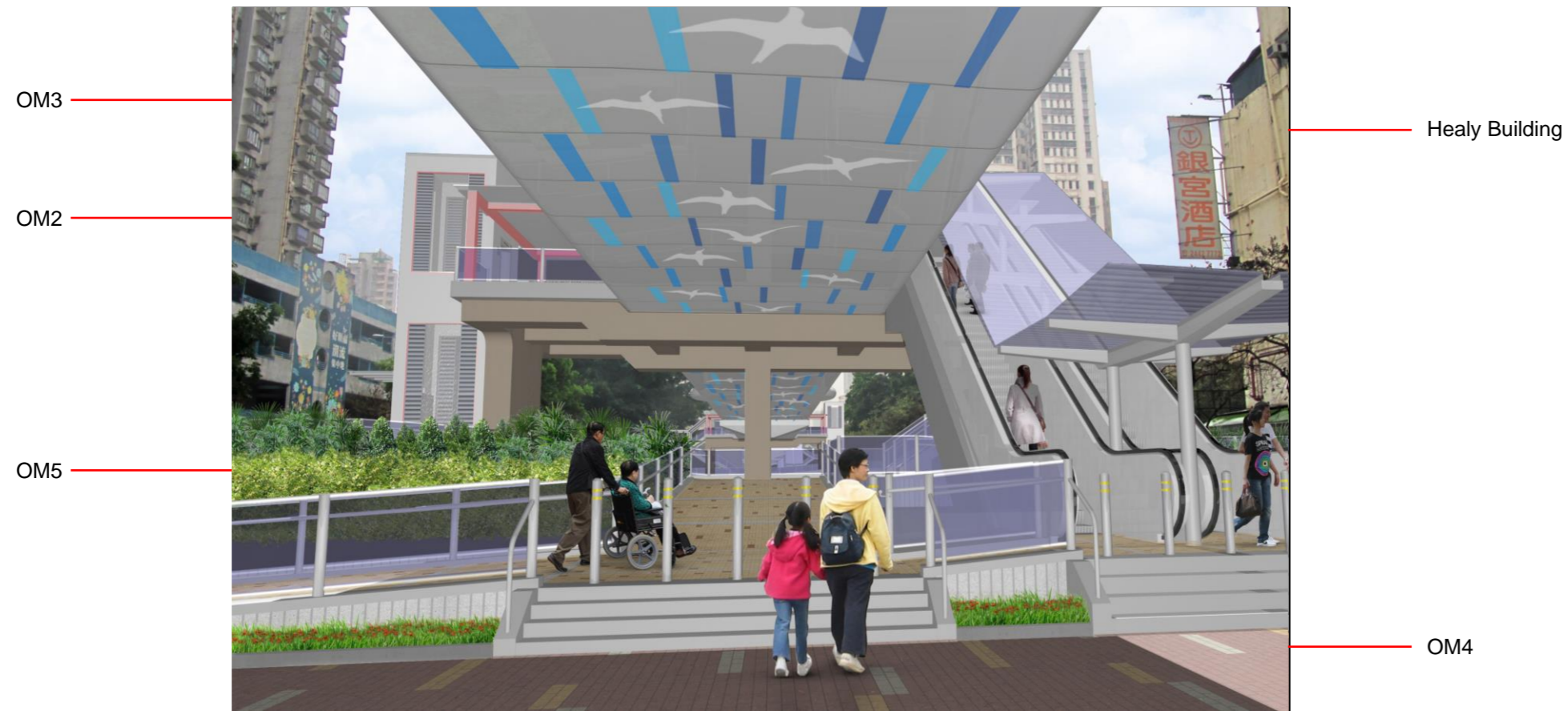
Drawing title  
 VIEWPOINT NO. 6 PHOTOMONTAGE  
 FROM REC2 EXISTING AND  
 WITHOUT MITIGATION MEASURES  
 Existing and Without Mitigation  
 Measures (Sheet 1 of 2)

Drawing no.		Rev.	
10.1712			
Drawn	Date	Checked	Approved
RY	01/15	KYL	EC
Scale		Status	
N.T.S.		PRELIMINARY	

COPYRIGHT RESERVED



View REC2 – Day 1 with Mitigation Measures



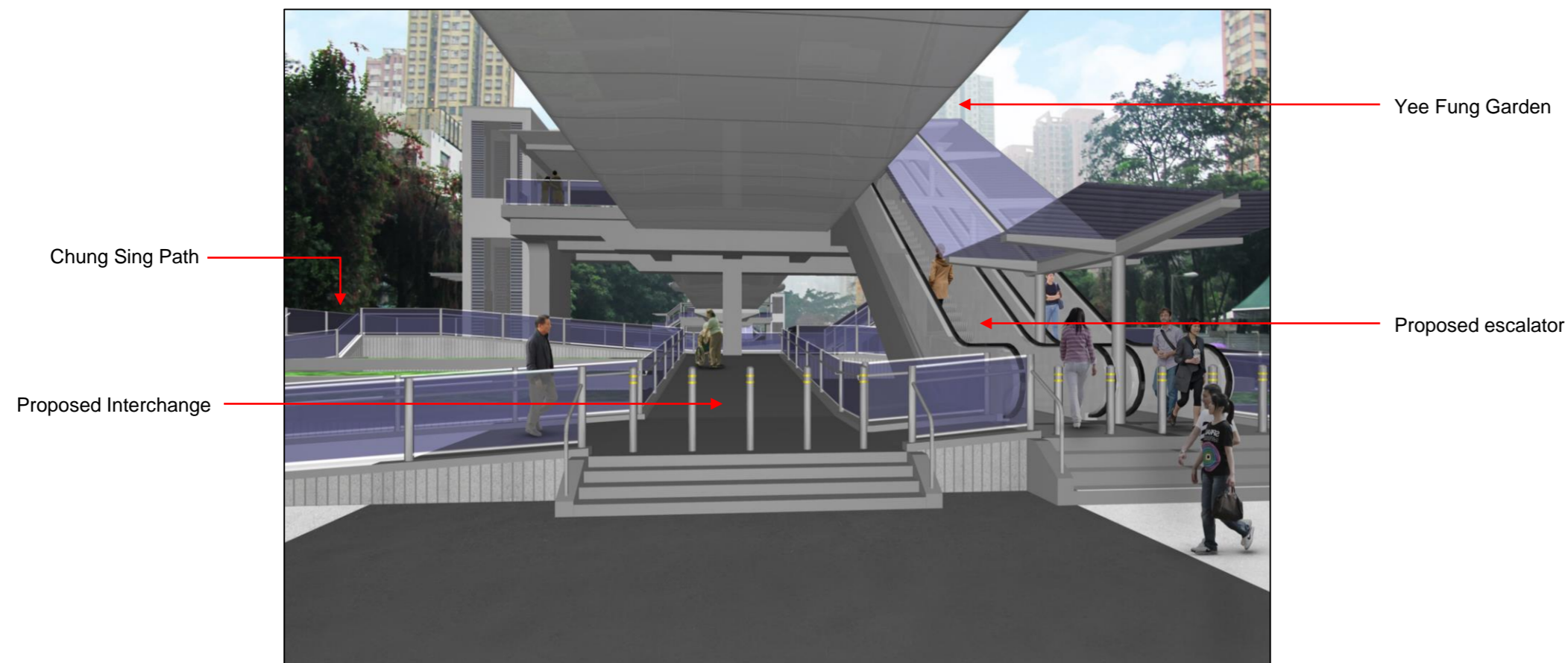
View REC2 – Year 10 with Mitigation Measures

Note:  
 The aesthetic footbridge design and facade treatment will be subjected to detail design.

A	FIRST ISSUE	EN	03/15
Rev	Description	By	Date
Consultant			
<b>ARUP</b>			
Contract No. and Title			
Agreement No. CE 32/2014 (HY) Elevated Pedestrian Corridor in Yuen Long Town connecting with Long Ping Station – Investigation, Design and Construction			
Drawing title			
VIEWPOINT NO. 6 PHOTOMONTAGE FROM REC2 Day 1 and Year 10 with Mitigation Measures (Sheet 2 of 2)			
Drawing no.		Rev.	
10.1713			
Drawn	Date	Checked	Approved
RY	01/15	KYL	EC
Scale		Status	
N.T.S.		PRELIMINARY	



View REC5 – Existing Condition



View REC5 – Without Mitigation Measures

A	FIRST ISSUE	EN	03/15
Rev	Description	By	Date

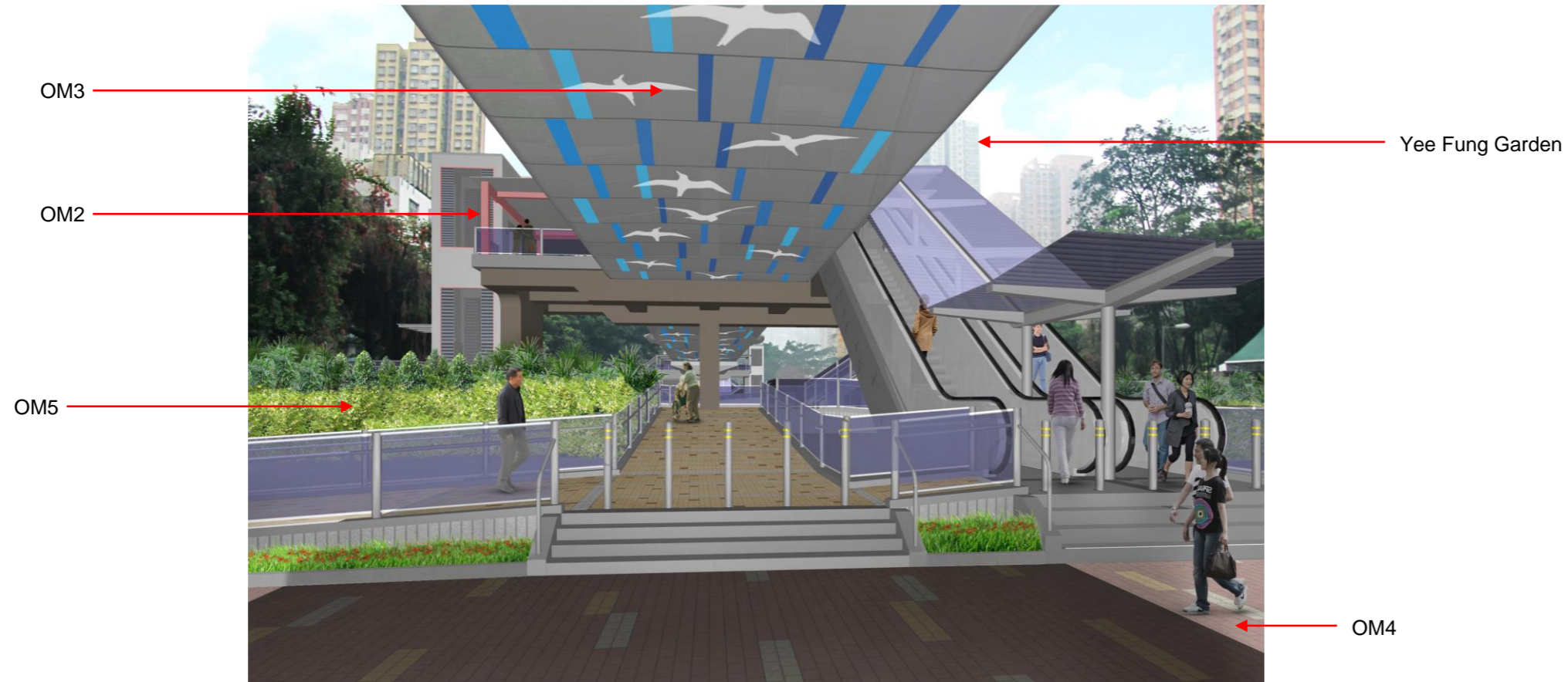
Consultant  
**ARUP**

Contract No. and Title  
 Agreement No. CE 32/2014 (HY)  
 Elevated Pedestrian Corridor in  
 Yuen Long Town connecting with  
 Long Ping Station  
 – Investigation, Design and Construction

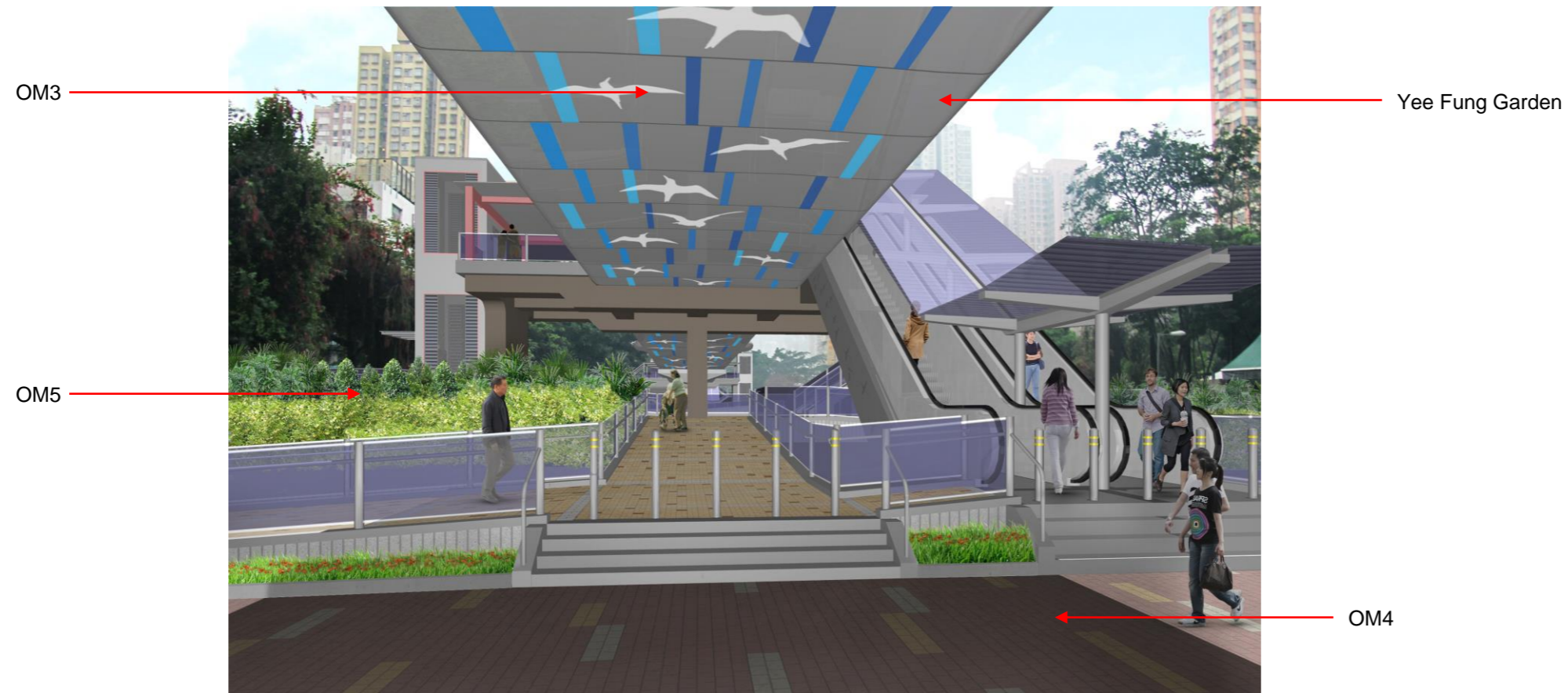
Drawing title  
 VIEWPOINT NO. 7 PHOTOMONTAGE  
 FROM REC5 EXISTING AND  
 WITHOUT MITIGATION MEASURES  
 Existing and Without Mitigation  
 Measures (Sheet 1 of 2)

Drawing no.		10.1714		Rev.
Drawn	Date	Checked	Approved	
RY	01/15	KYL	EC	
Scale	Status		PRELIMINARY	
N.T.S.	PRELIMINARY			

COPYRIGHT RESERVED



View REC5 – Day 1 with Mitigation Measures



View REC5 – Year 10 with Mitigation Measures

Rev	Description	By	Date
A	FIRST ISSUE	EN	03/15

Consultant  
**ARUP**

Contract No. and Title  
 Agreement No. CE 32/2014 (HY)  
 Elevated Pedestrian Corridor in  
 Yuen Long Town connecting with  
 Long Ping Station  
 – Investigation, Design and Construction

Drawing title  
 VIEWPOINT NO. 7 PHOTOMONTAGE  
 FROM REC5  
 Day 1 and Year 10 with Mitigation  
 Measures (Sheet 2 of 2)

Drawing no.		Rev.	
10.1715			
Drawn	Date	Checked	Approved
RY	01/15	KYL	EC
Scale		Status	
N.T.S.		PRELIMINARY	

Kin Shing Building



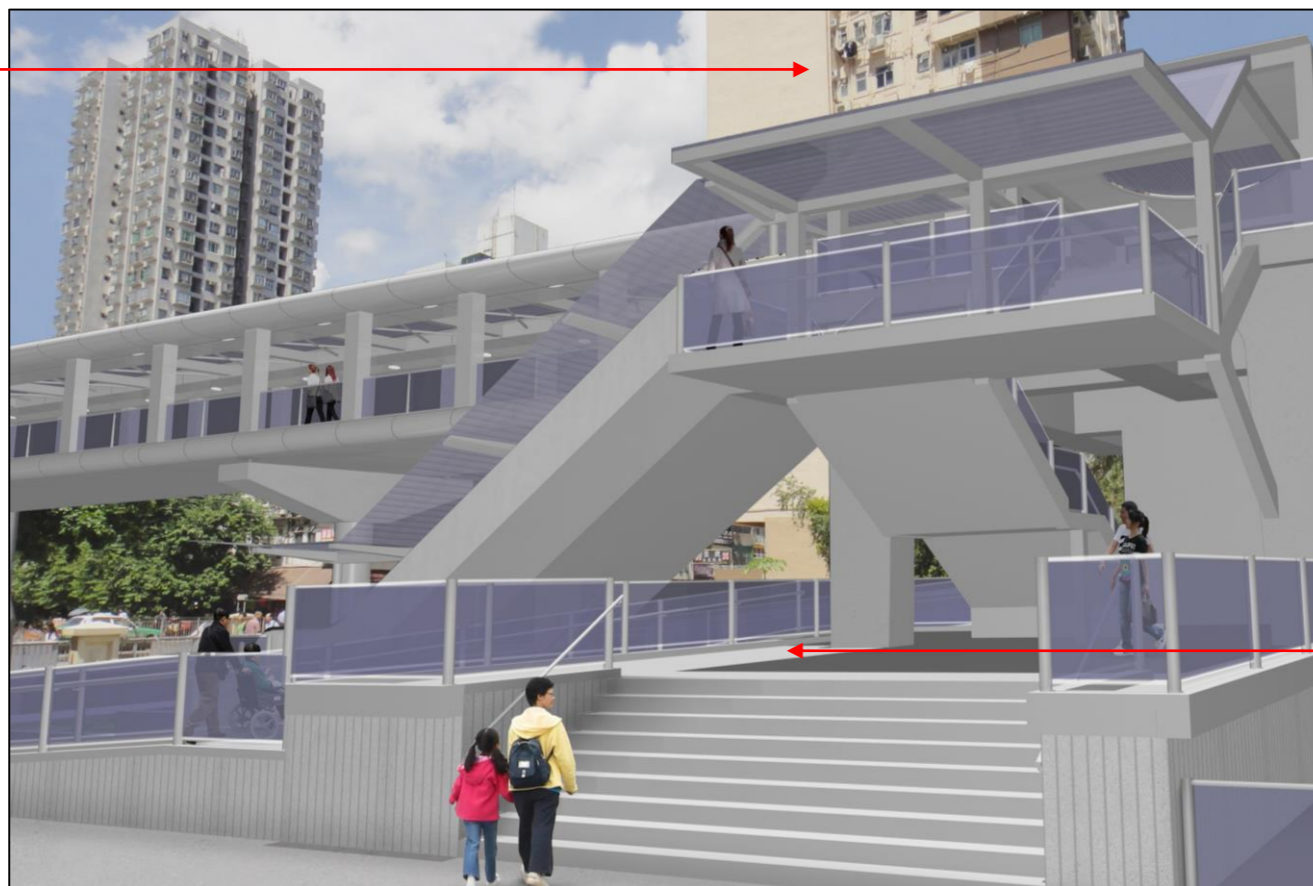
Yuen Long Mansion

Chung Sing Path

Existing Yuen Long Nullah

View REC6 – Existing Condition

Yuen Long Mansion



Proposed Interchange

View REC6 – Without Mitigation Measures

Rev	Description	By	Date
A	FIRST ISSUE	EN	03/15

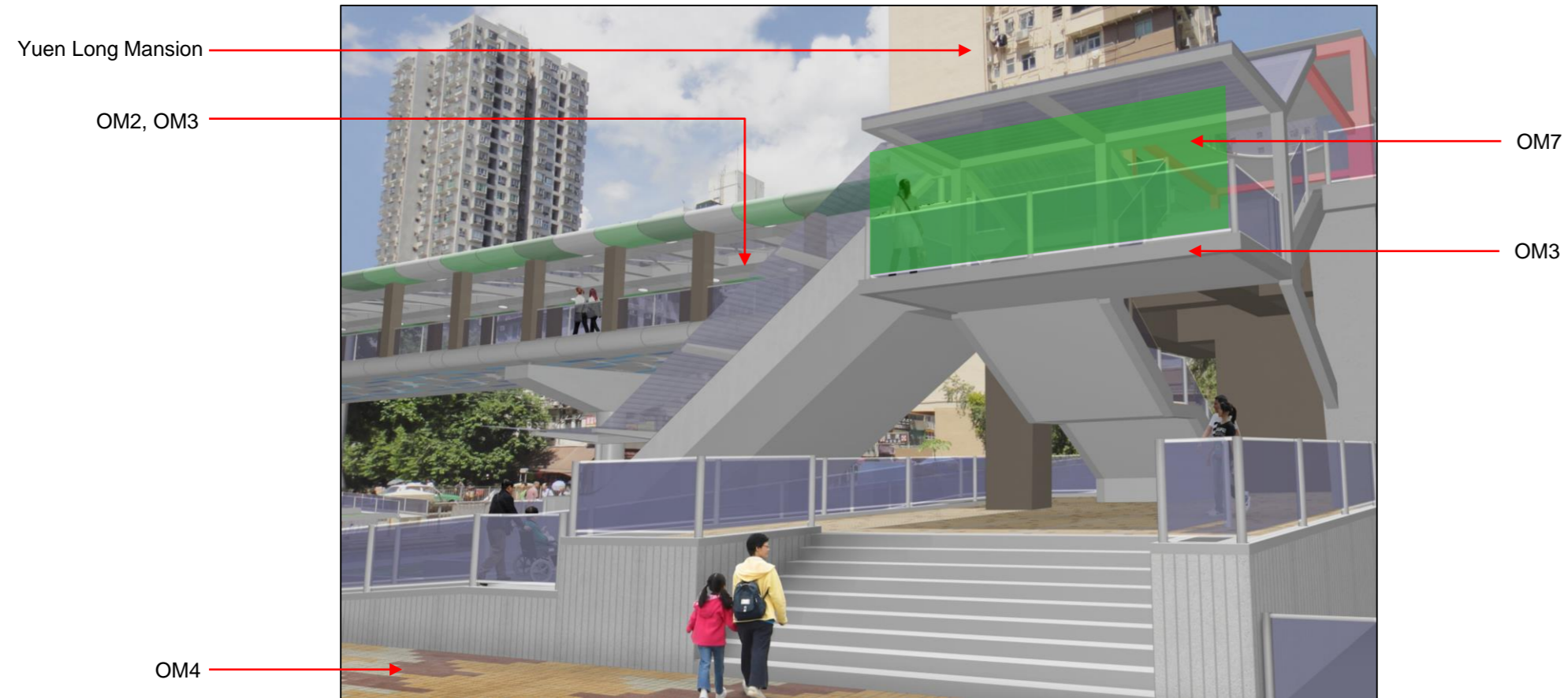
Consultant  
**ARUP**

Contract No. and Title  
 Agreement No. CE 32/2014 (HY)  
 Elevated Pedestrian Corridor in  
 Yuen Long Town connecting with  
 Long Ping Station  
 – Investigation, Design and Construction

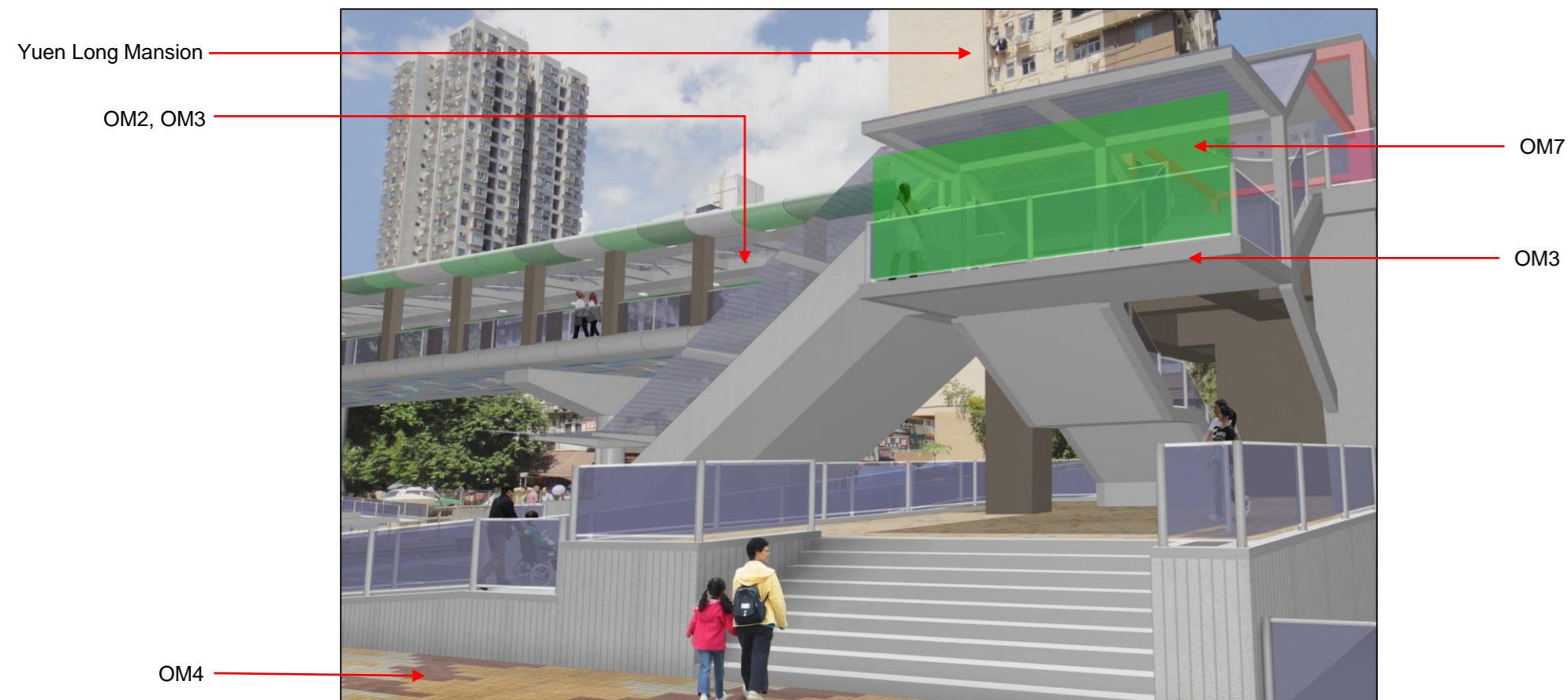
Drawing title  
 VIEWPOINT NO. 8 PHOTOMONTAGE  
 FROM REC6 EXISTING AND  
 WITHOUT MITIGATION MEASURES  
 Existing and Without Mitigation  
 Measures (Sheet 1 of 2)

Drawing no.		Rev.	
10.1716			
Drawn	Date	Checked	Approved
RY	01/15	KYL	EC
Scale		Status	
N.T.S.		PRELIMINARY	

COPYRIGHT RESERVED



View REC6 – Day 1 with Mitigation Measures



View REC6 – Year 10 with Mitigation Measures

Rev	Description	By	Date
A	FIRST ISSUE	EN	03/15

Consultant  
**ARUP**

Contract No. and Title  
 Agreement No. CE 32/2014 (HY)  
 Elevated Pedestrian Corridor in  
 Yuen Long Town connecting with  
 Long Ping Station  
 – Investigation, Design and Construction

Drawing title  
 VIEWPOINT NO. 8 PHOTOMONTAGE  
 FROM REC6  
 Day 1 and Year 10 with Mitigation  
 Measures (Sheet 2 of 2)

Drawing no.		Rev.	
10.1717			
Drawn	Date	Checked	Approved
RY	01/15	KYL	EC
Scale		Status	
N.T.S.		PRELIMINARY	

COPYRIGHT RESERVED



Ho Wang Building

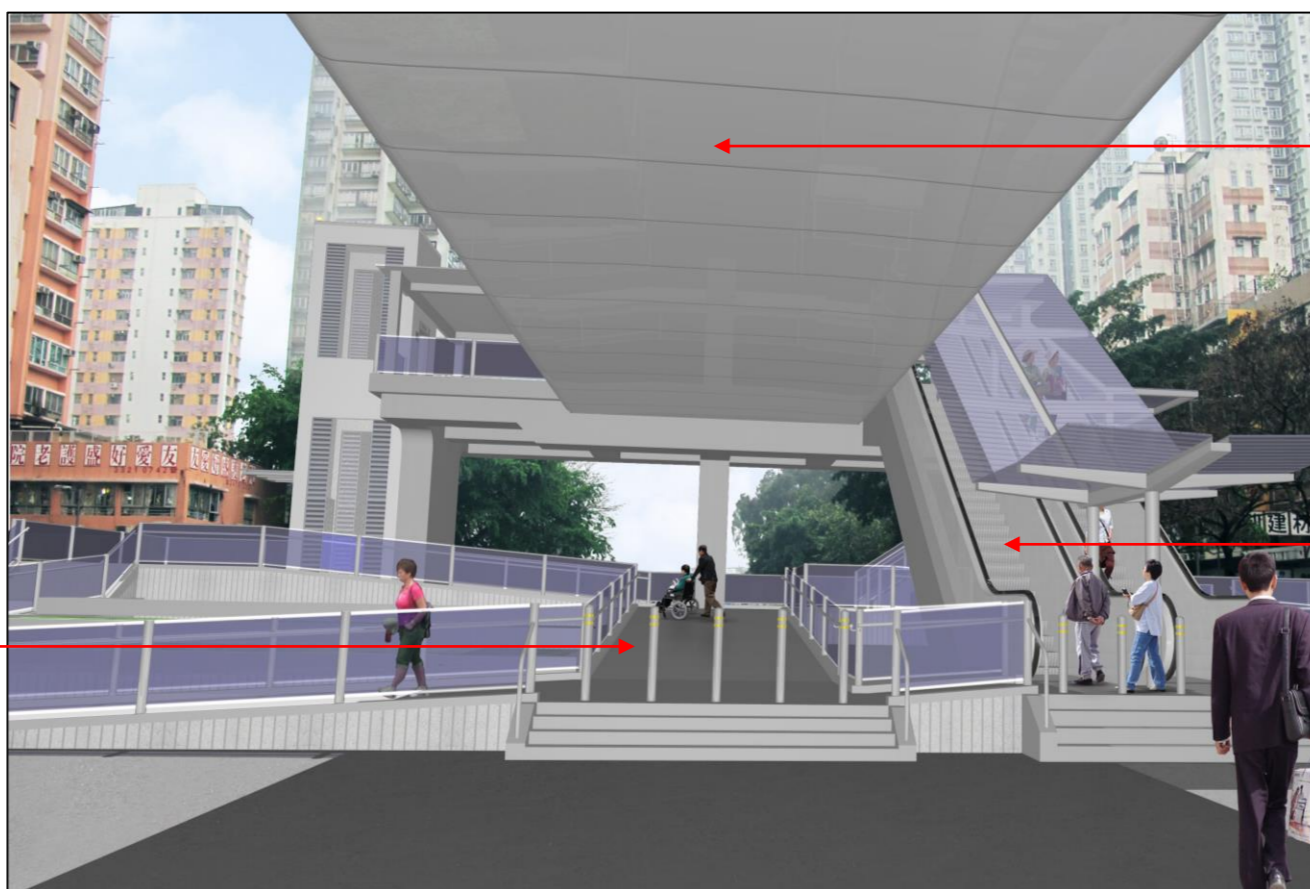


Yee Fung Garden

Existing Nullah

View REC8 – Existing Condition

Proposed Interchange



Proposed Footbridge

Proposed escalator

View REC8 – Without Mitigation Measures

A	FIRST ISSUE	EN	03/15
Rev	Description	By	Date

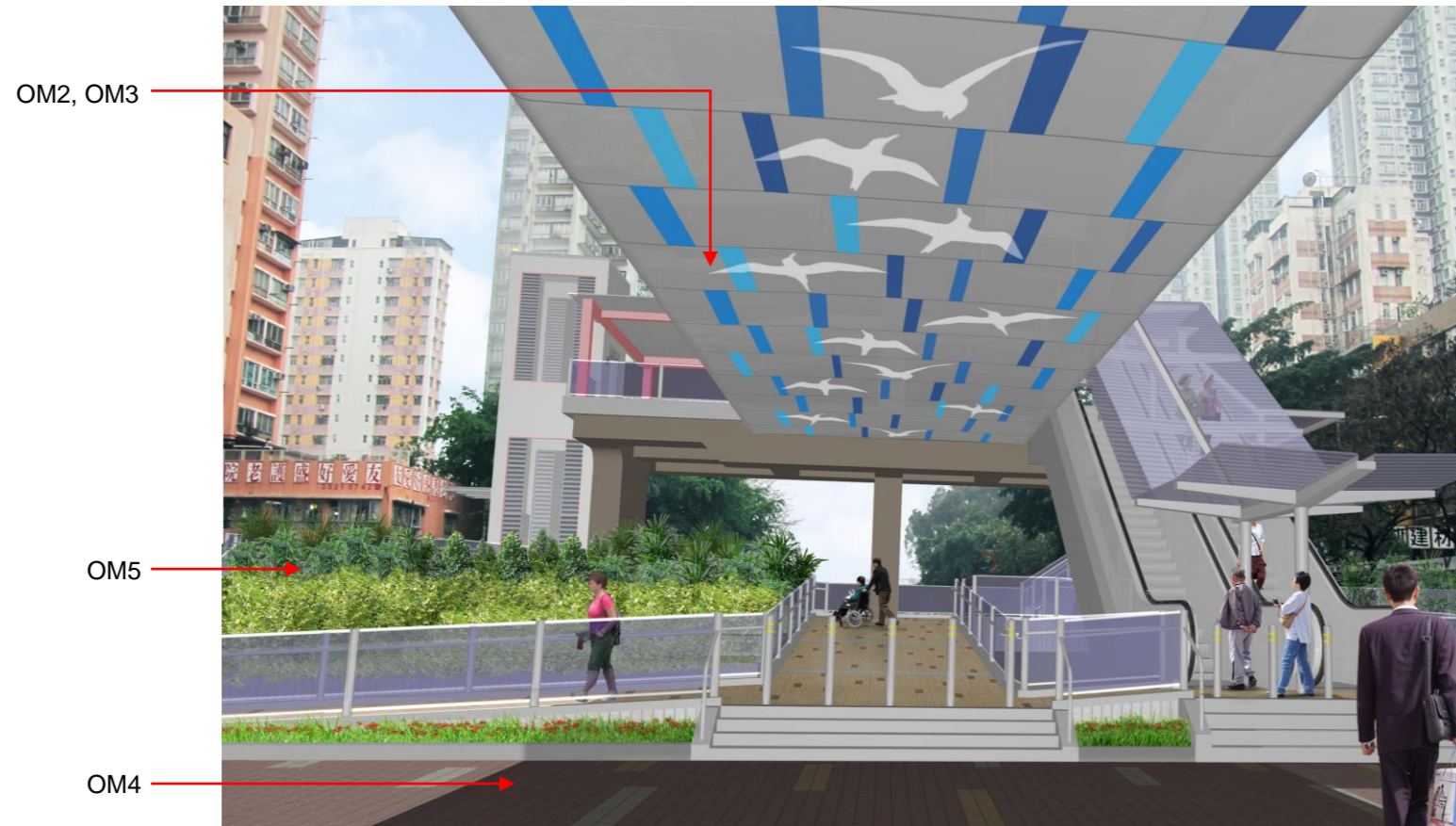
Consultant  
**ARUP**

Contract No. and Title  
 Agreement No. CE 32/2014 (HY)  
 Elevated Pedestrian Corridor in  
 Yuen Long Town connecting with  
 Long Ping Station  
 – Investigation, Design and Construction

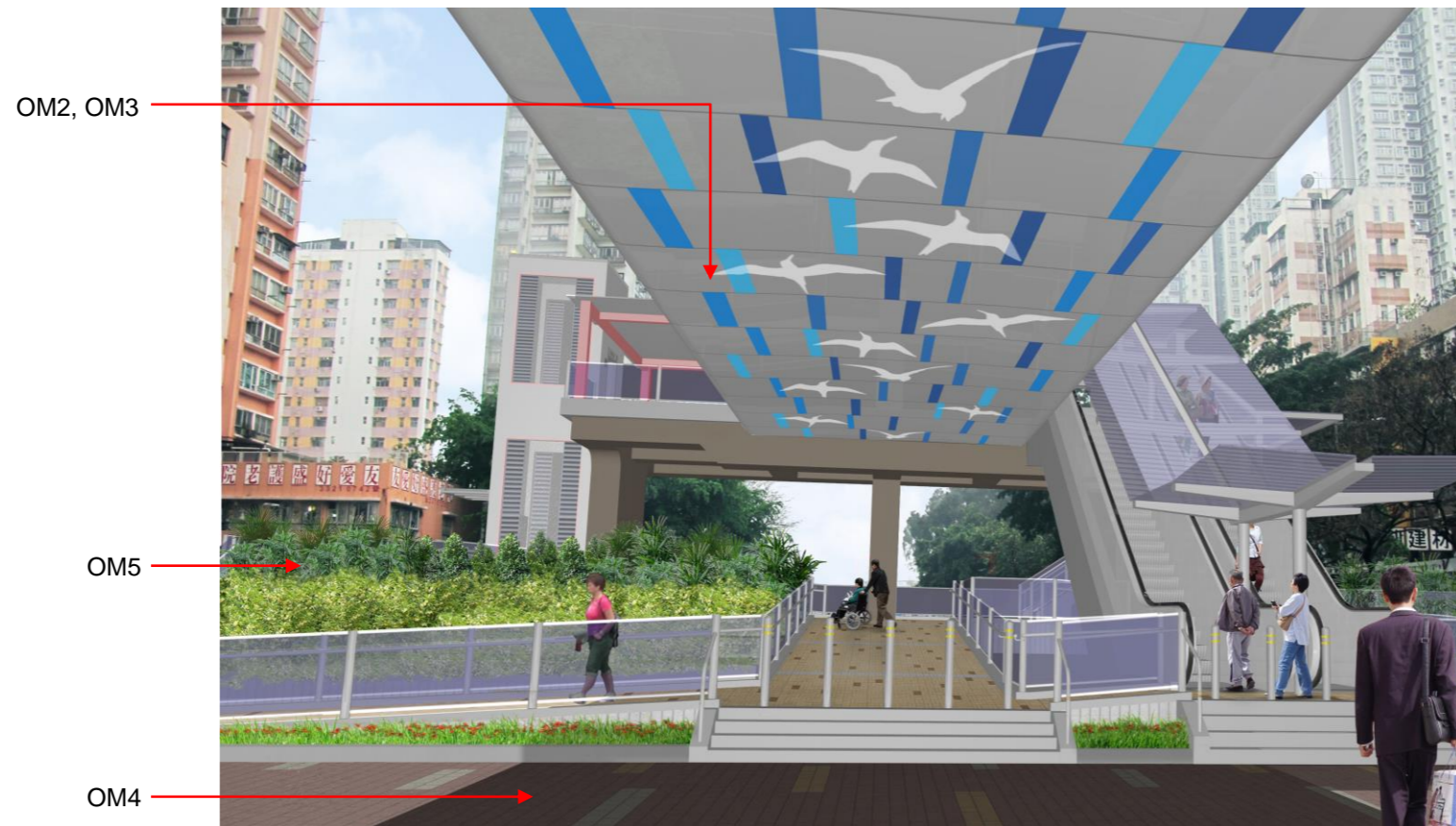
Drawing title  
 VIEWPOINT NO. 9 PHOTOMONTAGE  
 FROM REC8 EXISTING AND  
 WITHOUT MITIGATION MEASURES  
 Existing and Without Mitigation  
 Measures (Sheet 1 of 2)

Drawing no.		10.1718		Rev.
Drawn	Date	Checked	Approved	
RY	01/15	KYL	EC	
Scale		Status		
N.T.S.		PRELIMINARY		

COPYRIGHT RESERVED



View REC8 – Day 1 with Mitigation Measures



View REC8 – Year 10 with Mitigation Measures

Rev	Description	By	Date
A	FIRST ISSUE	EN	03/15

Consultant  
**ARUP**

Contract No. and Title  
 Agreement No. CE 32/2014 (HY)  
 Elevated Pedestrian Corridor in  
 Yuen Long Town connecting with  
 Long Ping Station  
 – Investigation, Design and Construction

Drawing title  
 VIEWPOINT NO. 9 PHOTOMONTAGE  
 FROM REC8  
 Day 1 and Year 10 with Mitigation  
 Measures (Sheet 2 of 2)

Drawing no. <b>10.1719</b>		Rev.	
Drawn RY	Date 01/15	Checked KYL	Approved EC
Scale N.T.S.		Status PRELIMINARY	

COPYRIGHT RESERVED

Ho Shin Fuk Building

Fook On Building

Yuen Long On Ling Road



Man Yip Building

View REC10 – Existing Condition

Proposed Footbridge



Proposed staircase

Proposed escalator

View REC10 – Without Mitigation Measures

Rev	Description	By	Date
A	FIRST ISSUE	EN	03/15

Consultant  
**ARUP**

Contract No. and Title  
 Agreement No. CE 32/2014 (HY)  
 Elevated Pedestrian Corridor in  
 Yuen Long Town connecting with  
 Long Ping Station  
 – Investigation, Design and Construction

Drawing title  
 VIEWPOINT NO. 10 PHOTOMONTAGE  
 FROM REC8 EXISTING AND WITHOUT  
 MITIGATION MEASURES  
 Existing and Without Mitigation Measures  
 (Sheet 1 of 2)

Drawing no.		Rev.	
10.1720			
Drawn	Date	Checked	Approved
RY	01/15	KYL	EC
Scale		Status	
N.T.S.		PRELIMINARY	

COPYRIGHT RESERVED

OM2, OM3

OM2



OM7

OM5

OM4

View REC10 – Day 1 with Mitigation Measures

OM2, OM3

OM2



OM7

OM5

OM4

View REC10 – Year 10 with Mitigation Measures

Rev	Description	By	Date
A	FIRST ISSUE	EN	03/15

Consultant  
**ARUP**

Contract No. and Title  
 Agreement No. CE 32/2014 (HY)  
 Elevated Pedestrian Corridor in  
 Yuen Long Town connecting with  
 Long Ping Station  
 – Investigation, Design and Construction

Drawing title  
 VIEWPOINT NO. 10  
 PHOTOMONTAGE FROM REC8  
 Day 1 and Year 10 with Mitigation  
 Measures (Sheet 2 of 2)

Drawing no.		Rev.	
10.1721			
Drawn	Date	Checked	Approved
RY	01/15	KYL	EC
Scale		Status	
N.T.S.		PRELIMINARY	

COPYRIGHT RESERVED