




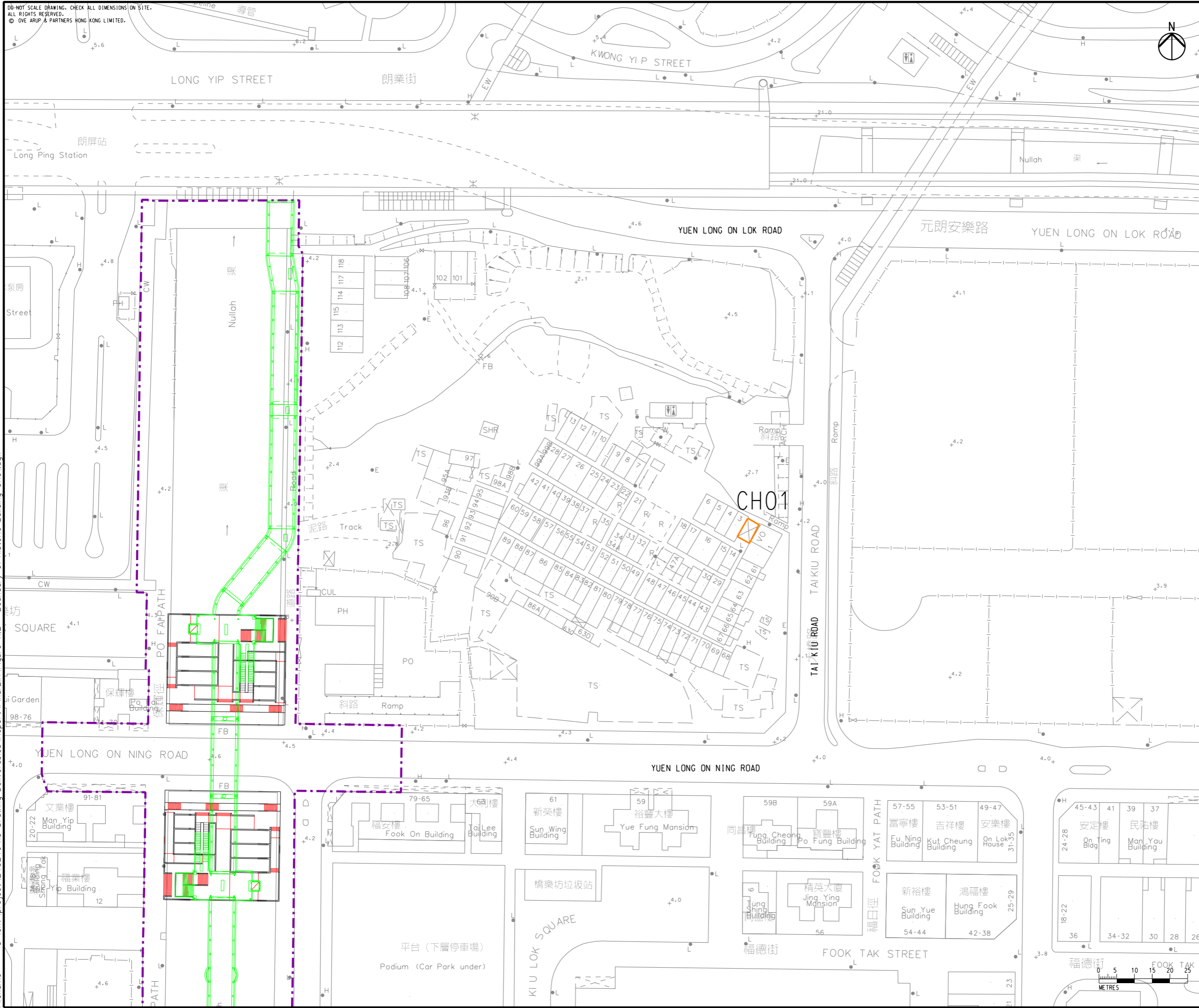
DO NOT SCALE DRAWING. CHECK ALL DIMENSIONS ON SITE.
ALL RIGHTS RESERVED.
© OVE ARUP & PARTNERS HONG KONG LIMITED.

LEGEND

-  PROPOSED SITE BOUNDARY
-  PROPOSED FOOTBRIDGE
-  BOUNDARY OF HISTORIC BUILDING



Printed by : 5/26/2016
Filename : G:\env\project\240246\13 Drawing Deliverables\Report\Final\IA\Figure 11.2 - Boundary of Historic Building CH01.dgn



D	FOURTH ISSUE	GL	05/16
C	THIRD ISSUE	GL	03/16
B	SECOND ISSUE	GL	01/16
A	FIRST ISSUE	GL	10/15
Rev	Description	By	Date

Consultant
ARUP

Contract No. and Title
Agreement No. CE 32/2014 (HY)
Elevated Pedestrian Corridor in
Yuen Long Town connecting with
Long Ping Station
– Investigation, Design and Construction

Drawing title
**BOUNDARY OF
HISTORIC BUILDING
CH01**

Drawing no. Figure 11.2		Rev. D	
Drawn GL	Date 05/16	Checked FC	Approved ST
Scale 1:1000 @A3		Status PRELIMINARY	

COPYRIGHT RESERVED



路政署
HIGHWAYS DEPARTMENT
主要工程管理處
MAJOR WORKS PROJECT MANAGEMENT OFFICE

