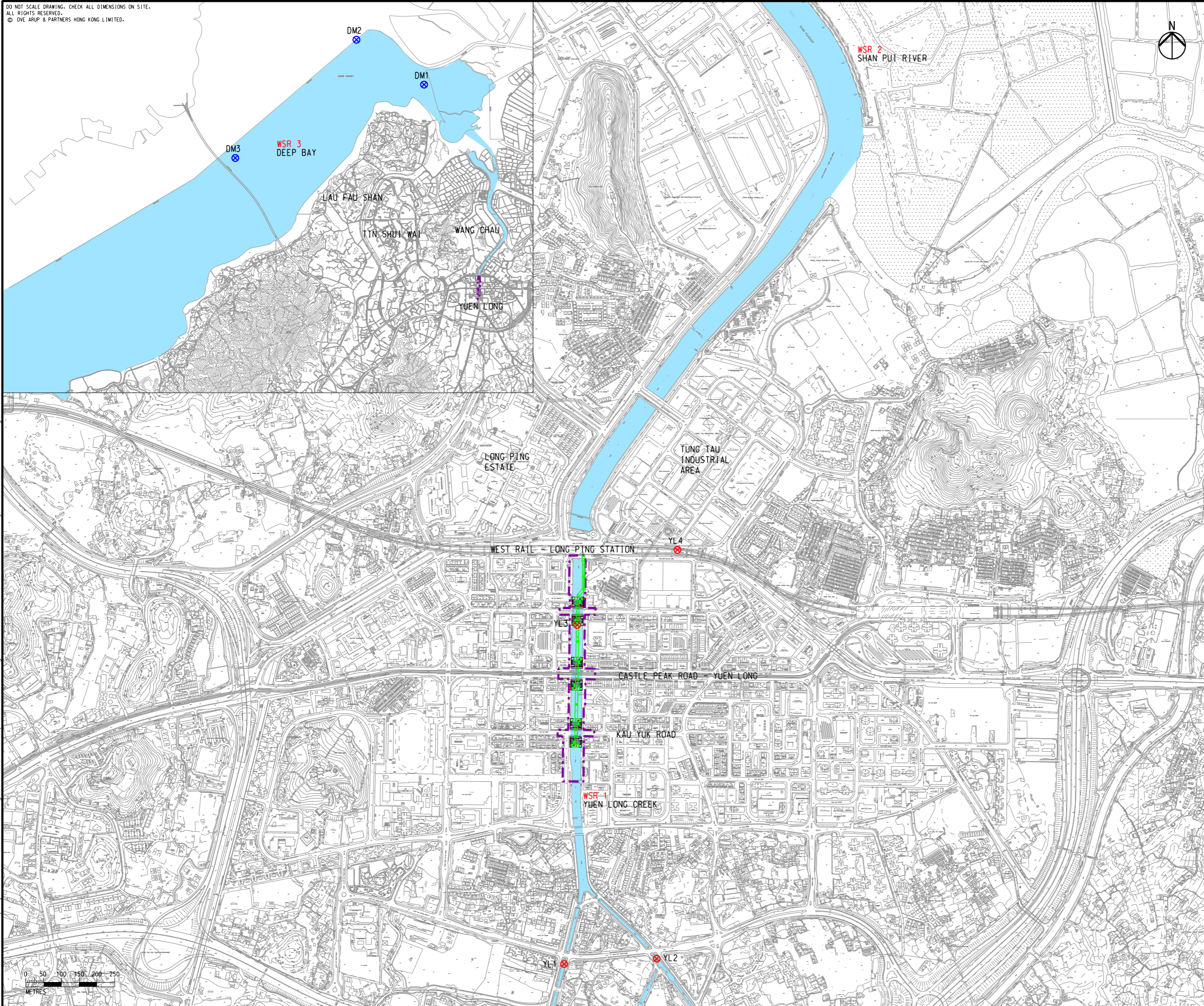


DO NOT SCALE DRAWING. CHECK ALL DIMENSIONS ON SITE.
ALL RIGHTS RESERVED.
© OVE ARUP & PARTNERS HONG KONG LIMITED.



- LEGEND**
- PROPOSED SITE BOUNDARY
 - PROPOSED FOOTBRIDGE
 - WATER SENSITIVE RECEIVERS
 - EPD RIVER MONITORING STATION
 - EPD MARINE WATER QUALITY MONITORING STATION



D	FOURTH ISSUE	GL	05/16
C	THIRD ISSUE	GL	03/16
B	SECOND ISSUE	GL	01/16
A	FIRST ISSUE	GL	11/15
Rev	Description	By	Date

Consultant
ARUP

Contract No. and Title
Agreement No. CE 32/2014 (HY)
Elevated Pedestrian Corridor in Yuen Long Town connecting with Long Ping Station – Investigation, Design and Construction

Drawing title
LOCATION OF WATER QUALITY SENSITIVE RECEIVER

Drawing no. FIGURE 6.1		Rev. D	
Drawn GL	Date 05/16	Checked FC	Approved ST
Scale 1:10000 @A3		Status PRELIMINARY	

COPYRIGHT RESERVED

路政署
HIGHWAYS DEPARTMENT
主要工程管理處
MAJOR WORKS PROJECT MANAGEMENT OFFICE

Printed by : 5/26/2016
Filename : G:\env\project\240246\13 Drawing Deliverables\Report\Final EIA\Figure 6.1 - Location of Water Quality Sensitive Receiver.dgn

