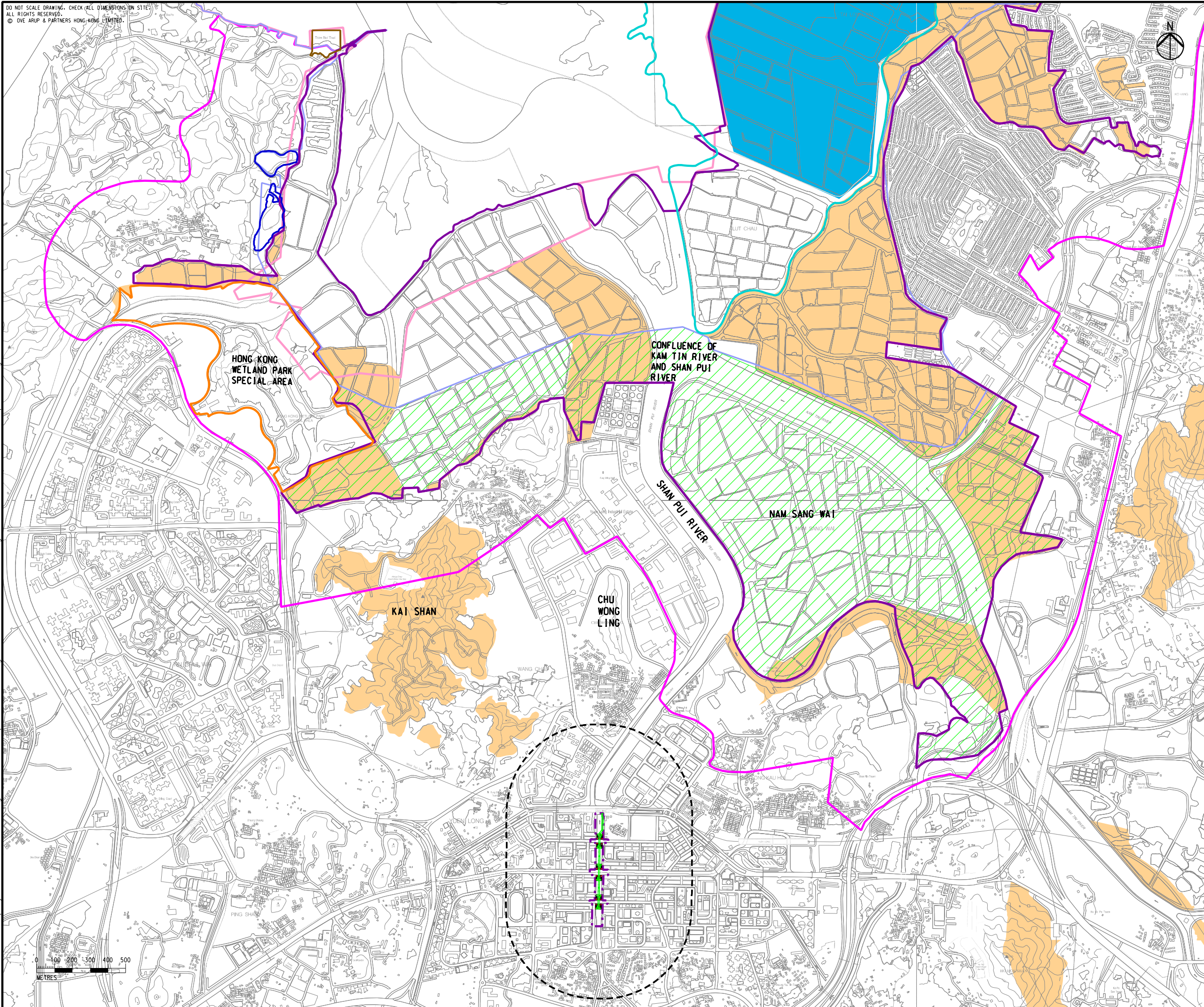


DO NOT SCALE DRAWING. CHECK ALL DIMENSIONS ON SITE.
ALL RIGHTS RESERVED.
© OVE ARUP & PARTNERS HONG KONG LIMITED.



- LEGEND**
- PROPOSED SITE BOUNDARY
 - PROPOSED FOOTBRIDGE
 - 500M ASSESSMENT AREA
 - MAI PO INNER DEEP BAY RAMSAR SITE
 - WETLAND CONSERVATION AREA
 - WETLAND BUFFER AREA
 - MAI PO MARSHES SSSI
 - INNER DEEP BAY SSSI
 - TSIM BEI TSUI SSSI
 - TSIM BEI TSUI EGRETRY SSSI
 - HONG KONG WETLAND PARK SPECIAL AREA
 - MAI PO NATURE RESERVE
 - CONSERVATION AREA
 - DEEP BAY WETLAND OUTSIDE RAMSAR SITE PRIORITY SITE FOR ENHANCED CONSERVATION

D	FOURTH ISSUE	GL	05/16
C	THIRD ISSUE	GL	03/16
B	SECOND ISSUE	GL	01/16
A	FIRST ISSUE	GL	10/15
Rev	Description	By	Date

Consultant
ARUP

Contract No. and Title
Agreement No. CE 32/2014 (HY)
Elevated Pedestrian Corridor in Yuen Long Town connecting with Long Ping Station – Investigation, Design and Construction

Drawing title
LOCATIONS OF RECOGNIZED SITES OF CONSERVATION IMPORTANCE

Drawing no. FIGURE 9.1		Rev. D	
Drawn GL	Date 05/16	Checked FC	Approved ST
Scale 1:20000 @A3		Status PRELIMINARY	

COPYRIGHT RESERVED

路政署
HIGHWAYS DEPARTMENT
主要工程管理處
MAJOR WORKS PROJECT MANAGEMENT OFFICE

Printed by : 5/26/2016
Filename : G:\env\project\240246\13 Drawing Deliverables\Report\Final\IA\Figure 9.1 - Locations of Recognized Sites of Conservation Importance.dgn