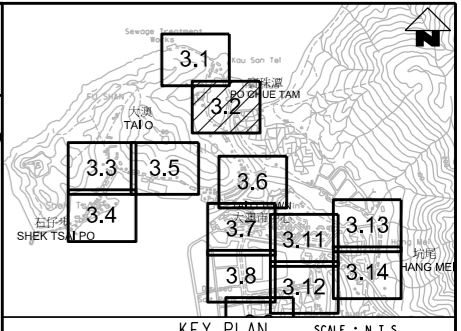
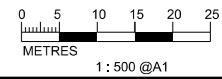


MATCH LINE
FOR CONTINUATION
SEE DWG FIGURE 3.1



- LEGEND AND ABBREVIATION:
- Proposed Sewer
 - Proposed Manhole
 - Proposed Rising Main
 - Proposed Tapping Pipe
(subject to consultation with owners
of houses with topographical problem)
 - Proposed Sewage Pumping Station
 - Label for Air Sensitive Receiver
 - 500m Radius Boundary
of Tai O STW, Hang Mei
SPS and Fan Kwai Tong
SPS



PRINTED BY: cheu8306 8/9/2013 6:24:16 PM
 FILENAME: F:\CHINA\up\orange_CADD\Project\54572\FIGURE\EA-TAI O\Air_Sensitive\54572-FIGURE-T0-3.2.dgn



Agreement No. CE 15/2010 (DS)
 Upgrading of Cheung Chau and Tai O Sewerage Collection, Treatment and
 Disposal Facilities - Design and Construction
Outlying Islands Sewerage Stage 2 -
 Upgrading of Tai O Sewerage Collection, Treatment and Disposal Facilities

Title :	AIR SENSITIVE RECEIVERS (Sheet 2 of 14)		
Date :	MAY 2015	Figure :	3.2