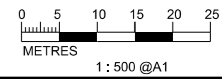


- LEGEND AND ABBREVIATION:
- Proposed Sewer
  - Proposed Manhole
  - Proposed Rising Main
  - Proposed Tapping Pipe (subject to consultation with owners of houses with topographical problem)
  - Proposed Sewage Pumping Station
  - Label for Air Sensitive Receiver
  - 500m Radius Boundary of Tai O STW, Hang Mei SPS and Fan Kwai Tong SPS

MATCH LINE  
FOR CONTINUATION  
SEE DWG FIGURE 3.6



PRINTED BY: cheu8306 8/9/2015 6:24:20 PM  
 FILENAME: P:\CHINA\Up drainage\_CADD\Project\3.6\FIGURE-3.6\FIGURE-TO-3.6.dgn



Agreement No. CE 15/2010 (DS)  
 Upgrading of Cheung Chau and Tai O Sewerage Collection, Treatment and Disposal Facilities - Design and Construction  
 Outlying Islands Sewerage Stage 2 -  
 Upgrading of Tai O Sewerage Collection, Treatment and Disposal Facilities

Title :	AIR SENSITIVE RECEIVERS (Sheet 6 of 14)		
Date :	MAY 2015	Figure :	3.6