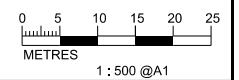


KEY PLAN SCALE : N.T.S.

- LEGEND AND ABBREVIATION:
- Proposed Sewer
 - Proposed Manhole
 - Proposed Rising Main
 - Proposed Tapping Pipe (subject to consultation with owners of houses with topographical problem)
 - Proposed Sewage Pumping Station
 - Label for Noise Sensitive Receiver
 - 300m Study Boundary
 - NOISE MONITORING LOCATION

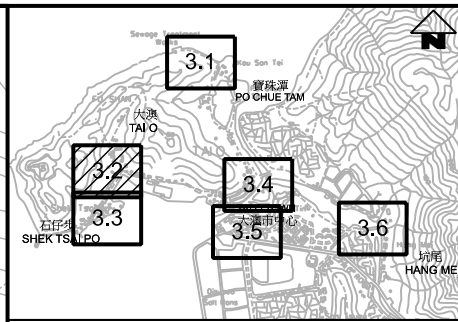
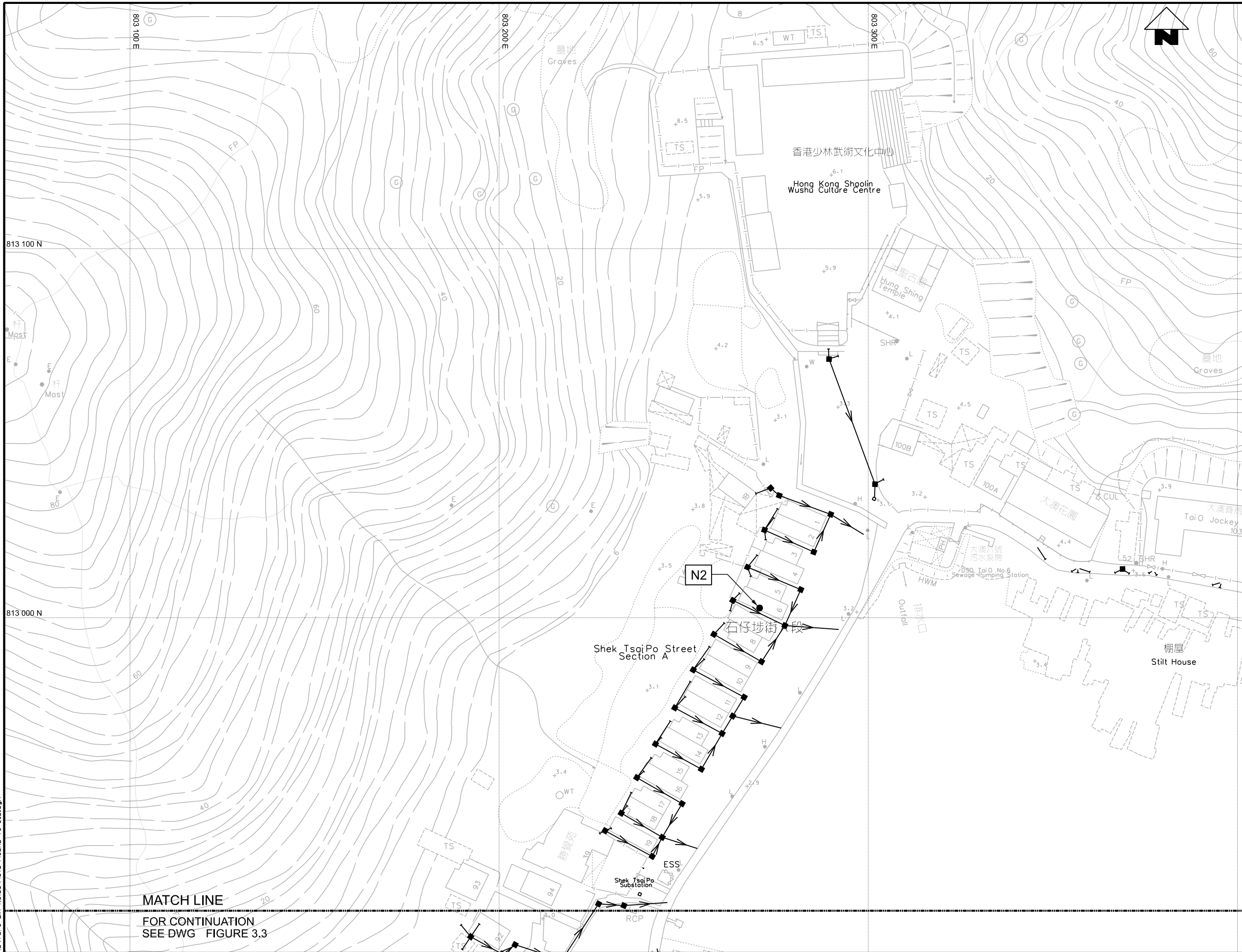


PRINTED BY: sfo 28/5/2015 16:45:19 FILENAME: R:\Atkins China\Tai O EIA Noise\4572-FIGURE-TO-3.dgn

渠務署
DRAINAGE SERVICES DEPARTMENT

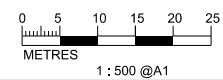
Agreement No. CE 15/2010 (DS)
Upgrading of Cheung Chau and Tai O Sewerage Collection, Treatment and Disposal Facilities - Design and Construction
Outlying Islands Sewerage Stage 2 -
Upgrading of Tai O Sewerage Collection, Treatment and Disposal Facilities

Title :	NOISE MONITORING LOCATIONS (Sheet 1 of 7)		
Date :	May 2015	Figure :	3.1



- KEY PLAN SCALE : N.T.S.
- LEGEND AND ABBREVIATION:
- Proposed Sewer
 - Proposed Manhole
 - Proposed Rising Main
 - Proposed Tapping Pipe (subject to consultation with owners of houses with topographical problem)
 - Proposed Sewage Pumping Station
 - Label for Noise Sensitive Receiver
 - 300m Study Boundary
 - NOISE MONITORING LOCATION

MATCH LINE
FOR CONTINUATION
SEE DWG FIGURE 3.3

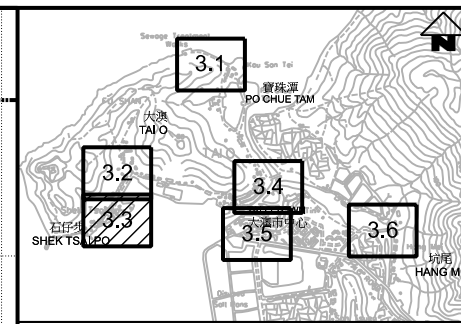
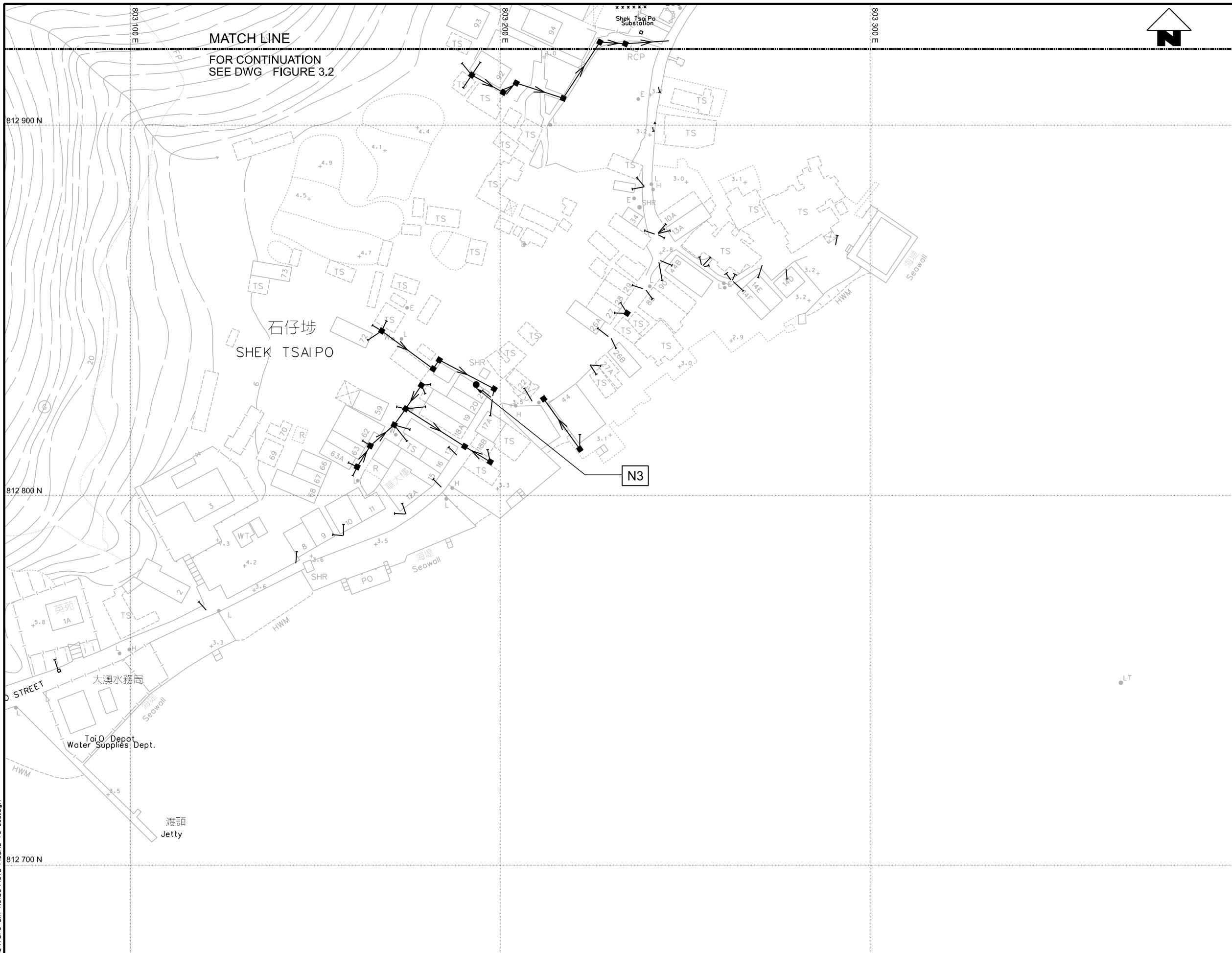


PRINTED BY: sfo 28/5/2015 16:45:45
FILENAME: R:\Atkins China\Tai O EIA Noise\4572-FIGURE-TO-3-2.dgn

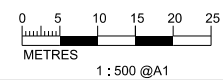


Agreement No. CE 15/2010 (DS)
Upgrading of Cheung Chau and Tai O Sewerage Collection, Treatment and Disposal Facilities - Design and Construction
Outlying Islands Sewerage Stage 2 -
Upgrading of Tai O Sewerage Collection, Treatment and Disposal Facilities

Title :	NOISE MONITORING LOCATIONS (Sheet 2 of 7)		
Date :	May 2015	Figure :	3.2



- KEY PLAN SCALE : 1:500
- LEGEND AND ABBREVIATION:
- Proposed Sewer
 - Proposed Manhole
 - Proposed Rising Main
 - Proposed Tapping Pipe (subject to consultation with owners of houses with topographical problem)
 - Proposed Sewage Pumping Station
 - Label for Noise Sensitive Receiver
 - 300m Study Boundary
 - NOISE MONITORING LOCATION

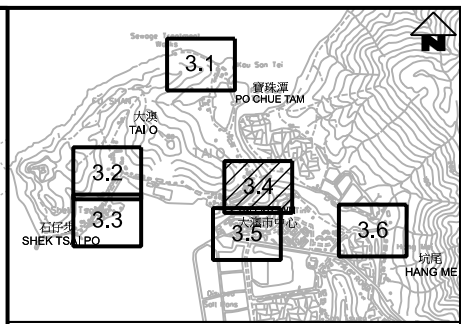
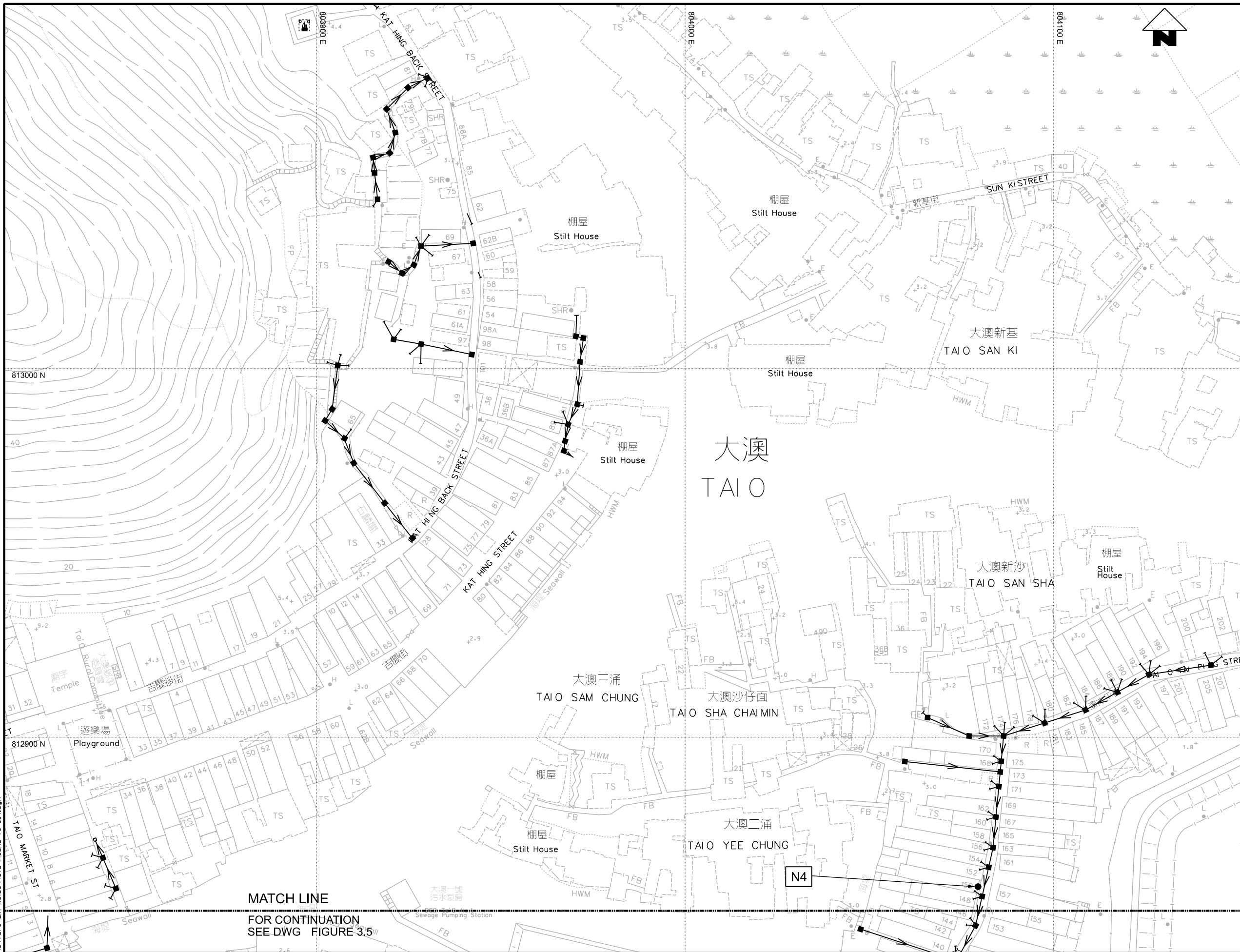


PRINTED BY: sfo 28/5/2015 16:46:22
 FILENAME: R:\Atkins China\Tai O EIA Noise\4572-FIGURE-TO-3.3.dgn



Agreement No. CE 15/2010 (DS)
 Upgrading of Cheung Chau and Tai O Sewerage Collection, Treatment and Disposal Facilities - Design and Construction
Outlying Islands Sewerage Stage 2 -
 Upgrading of Tai O Sewerage Collection, Treatment and Disposal Facilities

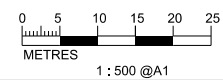
Title :	NOISE MONITORING LOCATIONS (Sheet 3 of 7)		
Date :	May 2015	Figure :	3.3



- KEY PLAN SCALE : N.T.S.
- LEGEND AND ABBREVIATION:
- Proposed Sewer
 - Proposed Manhole
 - Proposed Rising Main
 - Proposed Tapping Pipe (subject to consultation with owners of houses with topographical problem)
 - Proposed Sewage Pumping Station
 - Label for Noise Sensitive Receiver
 - 300m Study Boundary
 - NOISE MONITORING LOCATION

PRINTED BY: sfo 28/5/2015 16:47:07
 FILENAME: R:\Atkins China\Tai O EIA Noise 4572-FIGURE-T0-3.4.dgn

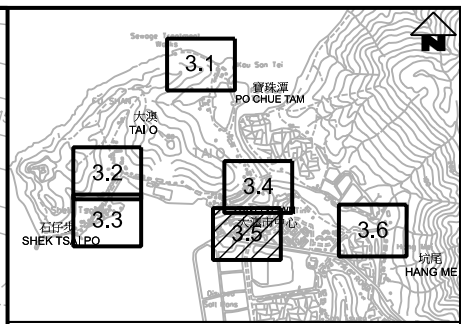
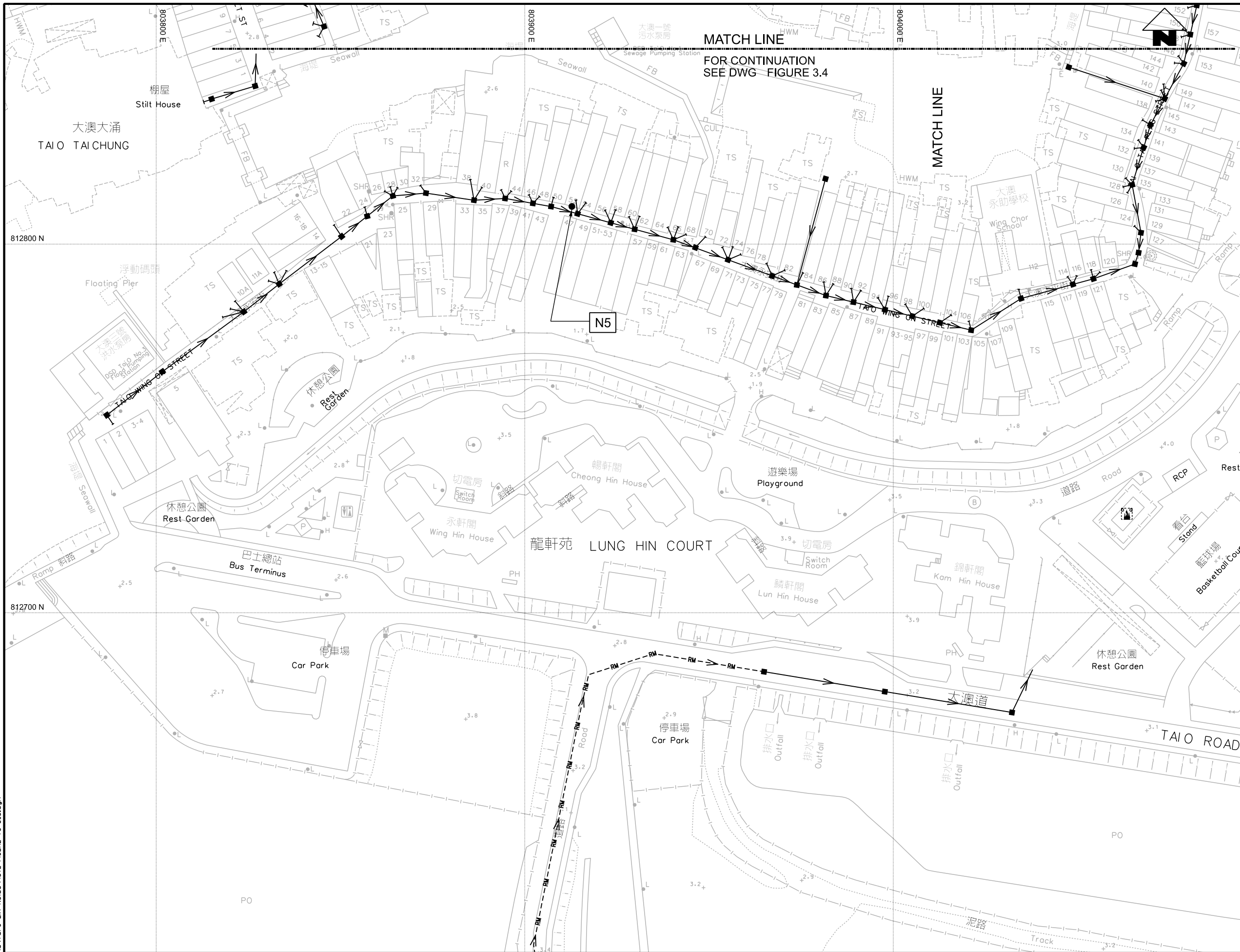
MATCH LINE
 FOR CONTINUATION
 SEE DWG FIGURE 3.5



渠務署
 DRAINAGE SERVICES DEPARTMENT

Agreement No. CE 15/2010 (DS)
 Upgrading of Cheung Chau and Tai O Sewerage Collection, Treatment and Disposal Facilities - Design and Construction
 Outlying Islands Sewerage Stage 2 -
 Upgrading of Tai O Sewerage Collection, Treatment and Disposal Facilities

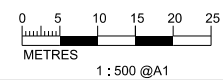
Title :	NOISE MONITORING LOCATIONS (Sheet 4 of 7)		
Date :	May 2015	Figure :	3.4



KEY PLAN SCALE : 1:500

LEGEND AND ABBREVIATION:

- Proposed Sewer
- Proposed Manhole
- Proposed Rising Main
- Proposed Tapping Pipe (subject to consultation with owners of houses with topographical problem)
- Proposed Sewage Pumping Station
- Label for Noise Sensitive Receiver
- 300m Study Boundary
- NOISE MONITORING LOCATION

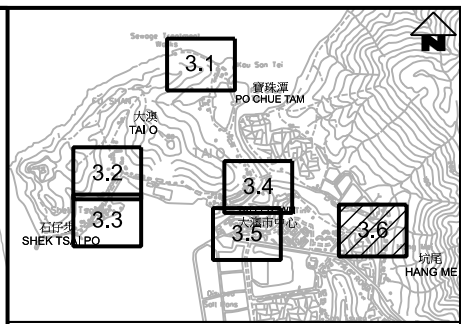
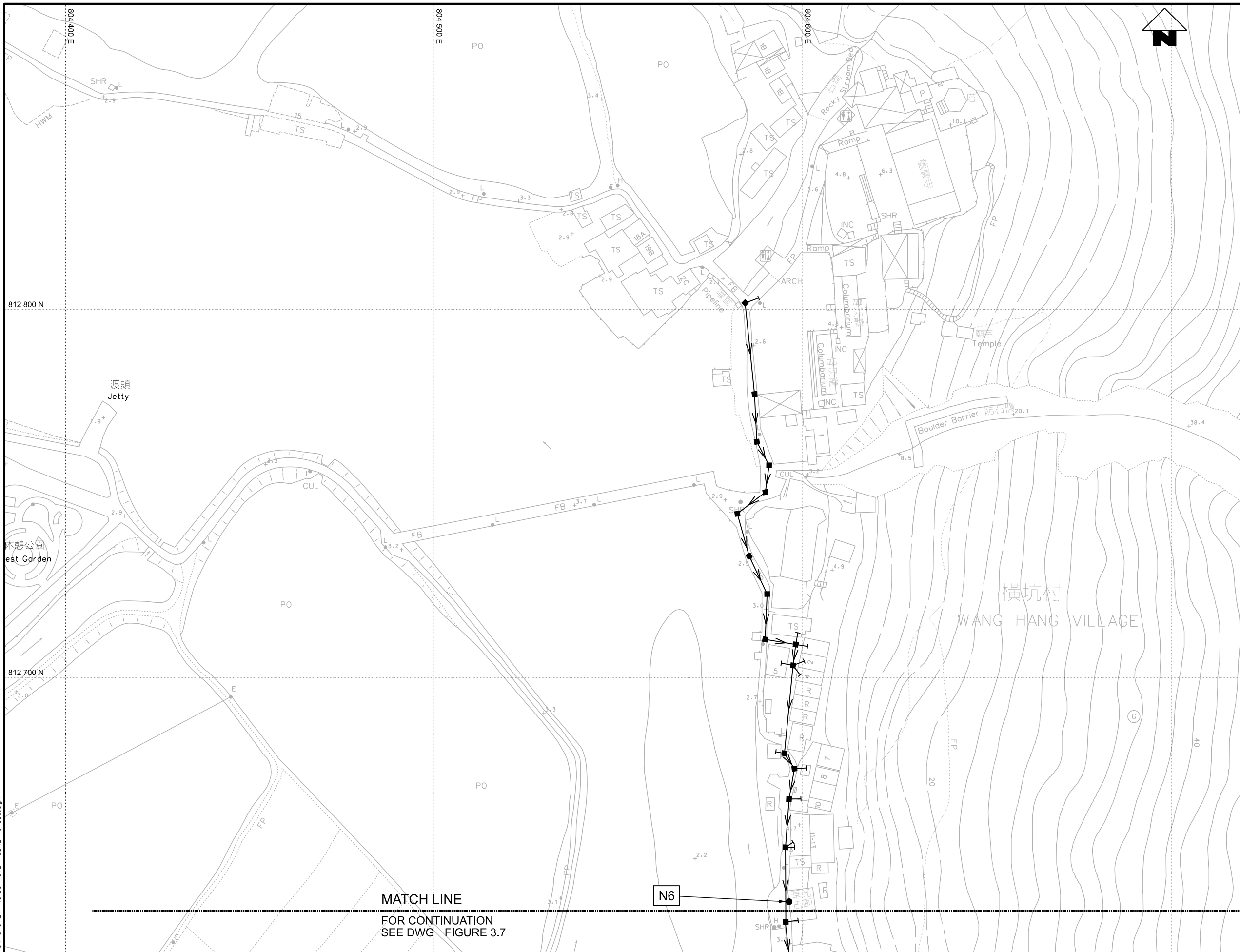


PRINTED BY: sfo 28/5/2015 16:47:32
 FILENAME: R:\Atkins China\Tai O EIA Noise\4572-FIGURE-10-3.5.dgn

渠務署
 DRAINAGE SERVICES DEPARTMENT

Agreement No. CE 15/2010 (DS)
 Upgrading of Cheung Chau and Tai O Sewerage Collection, Treatment and Disposal Facilities - Design and Construction
 Outlying Islands Sewerage Stage 2 -
 Upgrading of Tai O Sewerage Collection, Treatment and Disposal Facilities

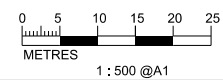
Title :	NOISE MONITORING LOCATIONS (Sheet 5 of 7)		
Date :	May 2015	Figure :	3.5



KEY PLAN SCALE : N.T.S.

- LEGEND AND ABBREVIATION:
- Proposed Sewer
 - Proposed Manhole
 - Proposed Rising Main
 - Proposed Tapping Pipe (subject to consultation with owners of houses with topographical problem)
 - Proposed Sewage Pumping Station
 - Label for Noise Sensitive Receiver
 - 300m Study Boundary
 - NOISE MONITORING LOCATION

MATCH LINE
FOR CONTINUATION
SEE DWG. FIGURE 3.7

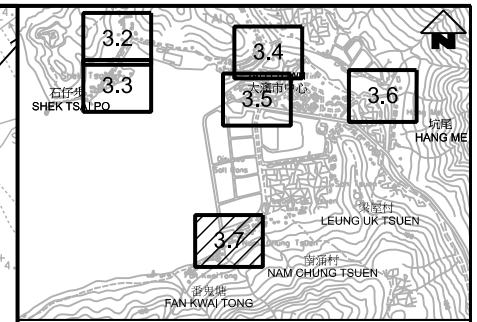
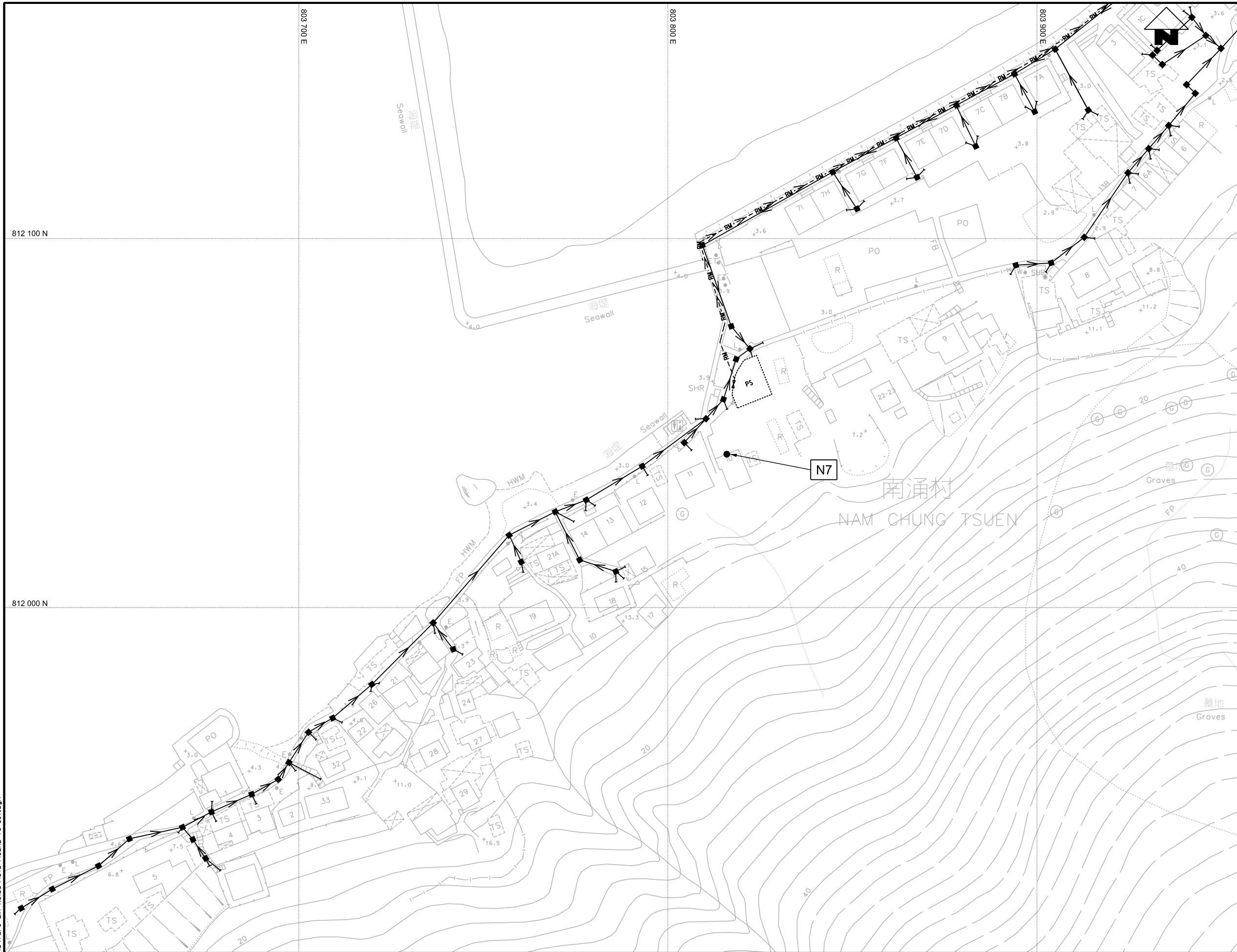


PRINTED BY: sfo 28/5/2015 16:48:01
 FILENAME: R:\Atkins China\Tai O EIA Noise\4572-FIGURE-TO-3.6.dgn



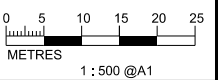
Agreement No. CE 15/2010 (DS)
 Upgrading of Cheung Chau and Tai O Sewerage Collection, Treatment and Disposal Facilities - Design and Construction
Outlying Islands Sewerage Stage 2 -
 Upgrading of Tai O Sewerage Collection, Treatment and Disposal Facilities

Title :	NOISE MONITORING LOCATIONS (Sheet 6 of 7)		
Date :	May 2015	Figure :	3.6



KEY PLAN SCALE : N.T.S.

- LEGEND AND ABBREVIATION:
- Proposed Sewer
 - Proposed Manhole
 - Proposed Rising Main
 - Proposed Tapping Pipe (subject to consultation with owners of houses with topographical problem)
 - Proposed Sewage Pumping Station
 - Label for Noise Sensitive Receiver
 - 300m Study Boundary
 - NOISE MONITORING LOCATION

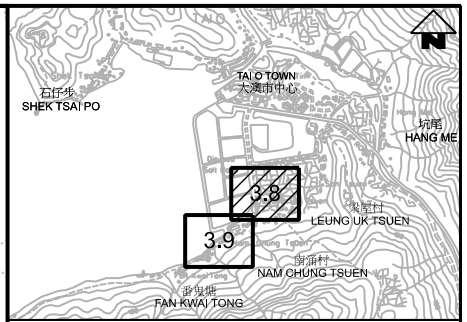
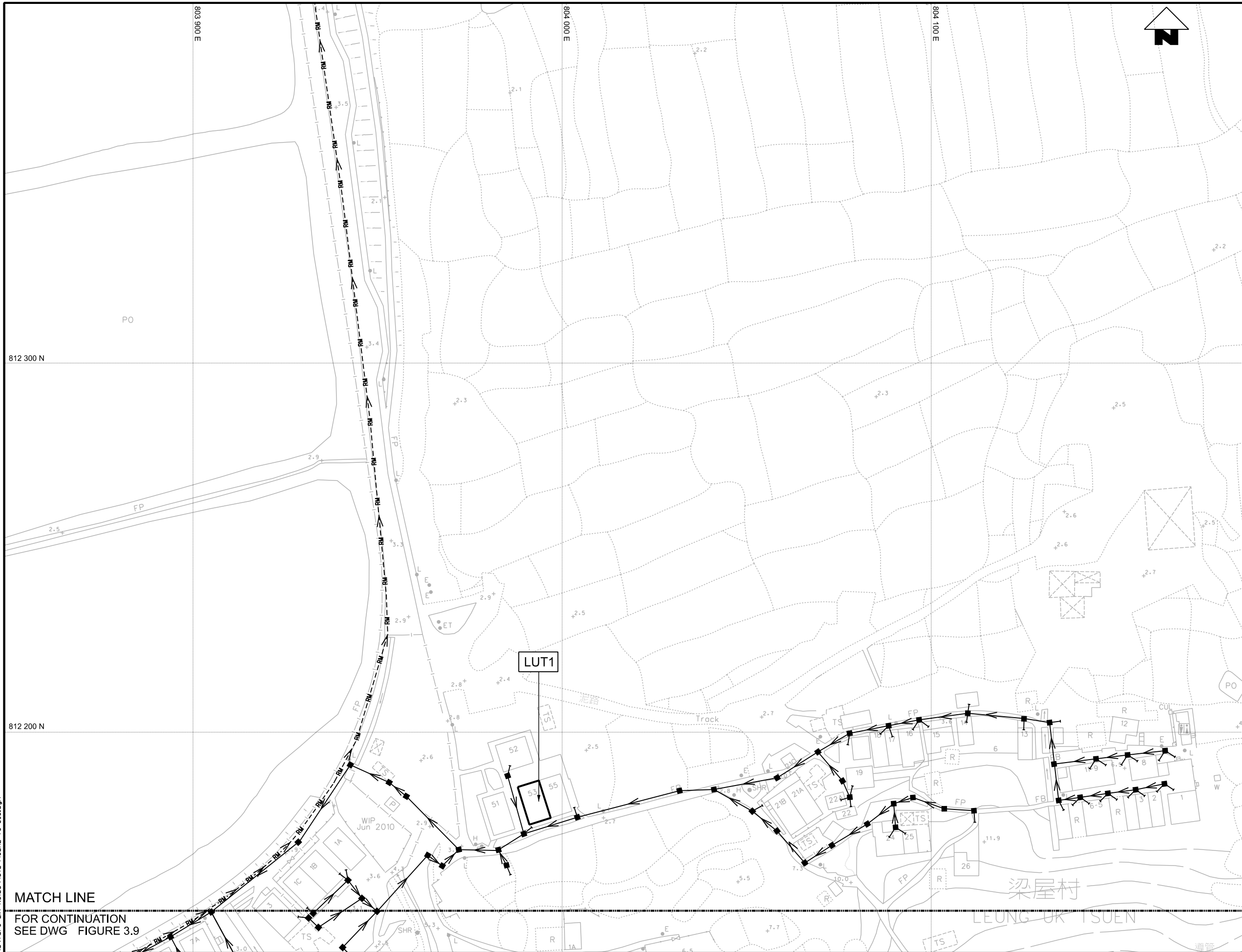


PRINTED BY: sfo 28/5/2015 16:48:25
 FILENAME: R:\Atkins China\Tai O EIA Noise\4572-FIGURE-10-3_1.dgn

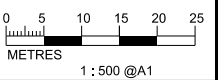


Agreement No. CE 15/2010 (DS)
 Upgrading of Cheung Chau and Tai O Sewerage Collection, Treatment and Disposal Facilities - Design and Construction
 Outlying Islands Sewerage Stage 2 -
 Upgrading of Tai O Sewerage Collection, Treatment and Disposal Facilities

Title :	NOISE MONITORING LOCATIONS (Sheet 7 of 7)		
Date :	May 2015	Figure :	3.7



- LEGEND AND ABBREVIATION:
- Proposed Sewer
 - Proposed Manhole
 - Proposed Rising Main
 - Proposed Tapping Pipe (subject to consultation with owners of houses with topographical problem)
 - Proposed Sewage Pumping Station
 - Label for Noise Sensitive Receiver
 - 300m Study Boundary



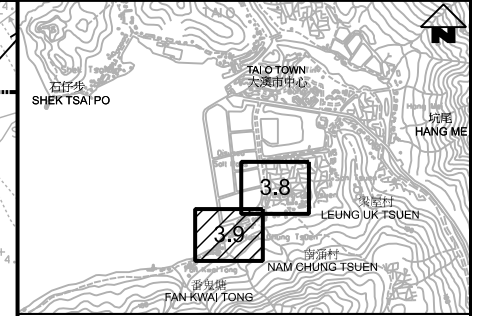
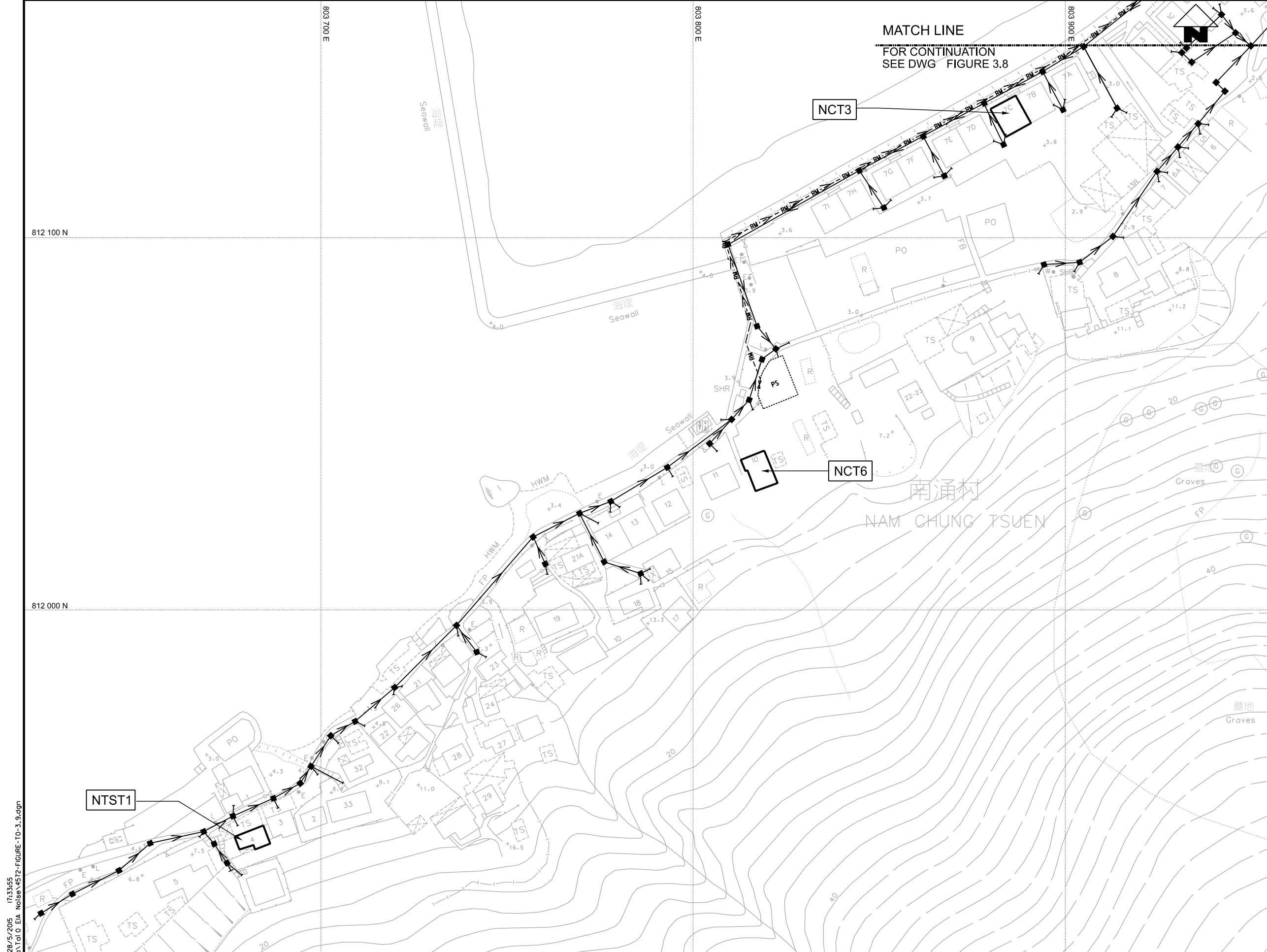
PRINTED BY: sfo
 FILENAME: R:\Atkins China\Tai O EIA Noise\4572-FIGURE-TO-3.B.dgn
 28/5/2015 17:33:29

MATCH LINE
 FOR CONTINUATION
 SEE DWG FIGURE 3.9



Agreement No. CE 15/2010 (DS)
 Upgrading of Cheung Chau and Tai O Sewerage Collection, Treatment and Disposal Facilities - Design and Construction
 Outlying Islands Sewerage Stage 2 -
 Upgrading of Tai O Sewerage Collection, Treatment and Disposal Facilities

Title :	NOISE SENSITIVE RECEIVERS (Sheet 1 of 2)		
Date :	May 2015	Figure :	3.8



- KEY PLAN SCALE : N.T.S.
- LEGEND AND ABBREVIATION:
- Proposed Sewer
 - Proposed Manhole
 - Proposed Rising Main
 - Proposed Tapping Pipe (subject to consultation with owners of houses with topographical problem)
 - Proposed Sewage Pumping Station
 - Label for Noise Sensitive Receiver
 - 300m Study Boundary

PRINTED BY: sfo 28/5/2015 17:33:55
 FILENAME: R:\Atkins China\Tai O EIA Noise\4572-FIGURE-T0-3.9.dgn

渠務署
DRAINAGE SERVICES DEPARTMENT

Agreement No. CE 15/2010 (DS)
 Upgrading of Cheung Chau and Tai O Sewerage Collection, Treatment and Disposal Facilities - Design and Construction
 Outlying Islands Sewerage Stage 2 -
 Upgrading of Tai O Sewerage Collection, Treatment and Disposal Facilities

Title :	NOISE SENSITIVE RECEIVERS (Sheet 2 of 2)		
Date :	May 2015	Figure :	3.9

