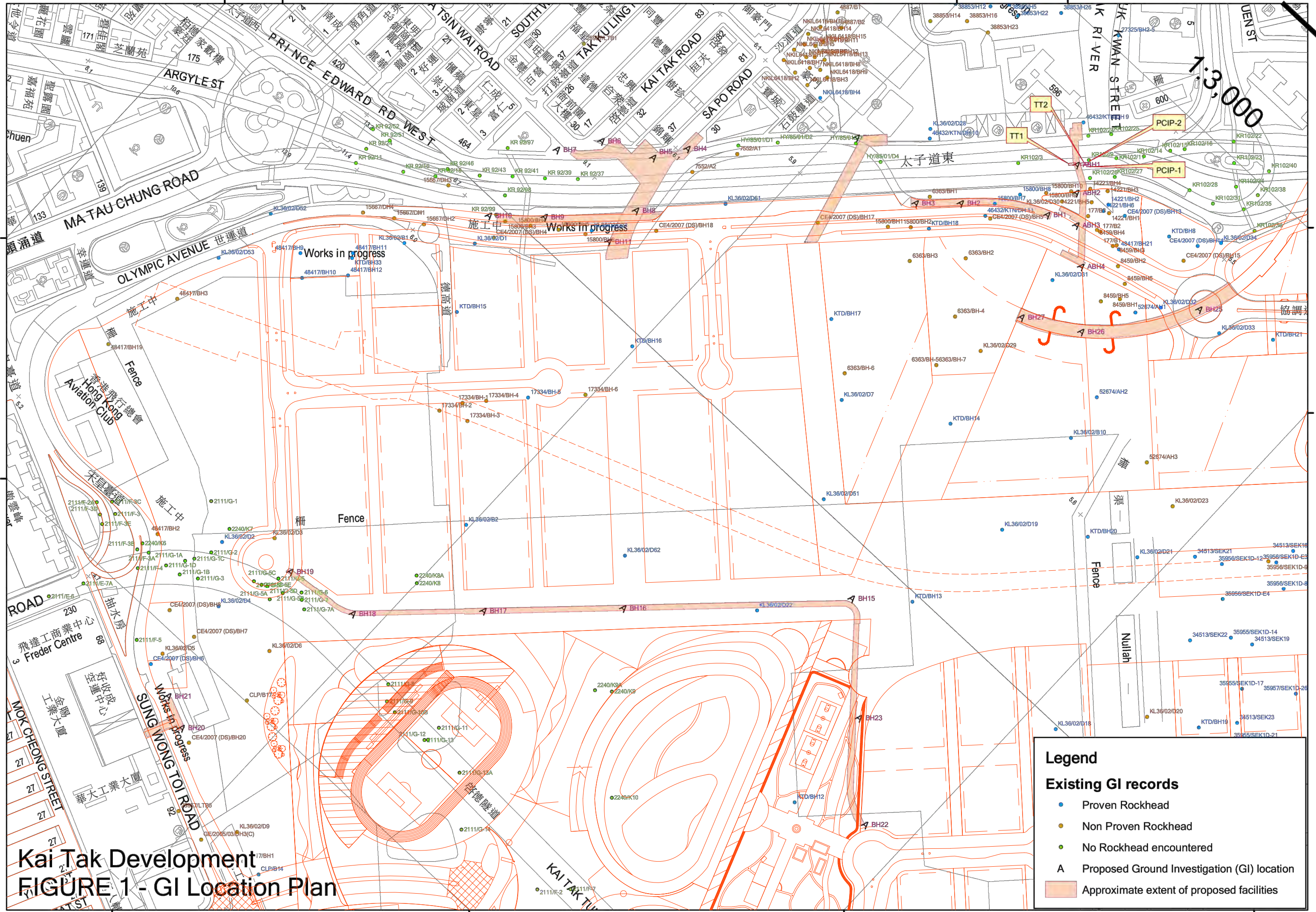

Appendix 12C

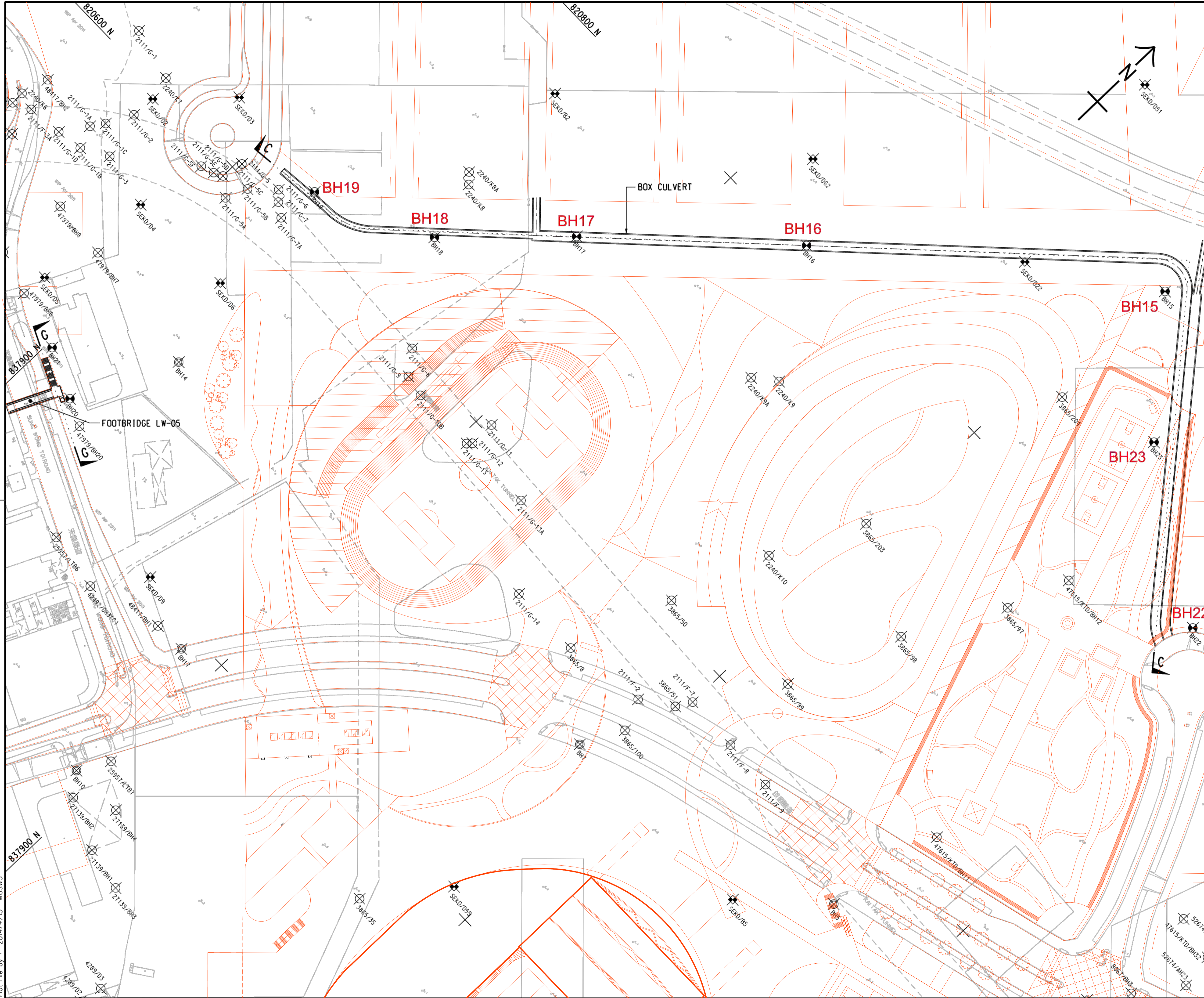
**Ground Investigation Report and Geological
Map**



Legend

- Existing GI records
 - Proven Rockhead
 - Non Proven Rockhead
 - No Rockhead encountered
- A Proposed Ground Investigation (GI) location
- Approximate extent of proposed facilities

Kai Tak Development
FIGURE 1 - GI Location Plan



- NOTES:**
1. FOR LEGEND REFER TO DRAWING NO. 60102100/GAR_F3/F FIGURE 3.
 2. THIS DRAWING TO BE READ IN CONJUNCTION WITH DRAWING NOS. 60102100/GAR_F3/F FIGURE 11 AND FIGURE 14.

REV.	DESCRIPTION	D.C.	P.C.	DATE

CEDD 土木工程拓展署
Civil Engineering and Development Department

KAI TAK DEVELOPMENT

KAI TAK DEVELOPMENT -
INFRASTRUCTURE AT FORMER RUNWAY AND
REMAINING AREAS OF NORTH APRON AND
IMPROVEMENT OF ADJACENT WATERWAYS -
DESIGN AND CONSTRUCTION

**GROUND INVESTIGATION
LAYOUT PLAN**

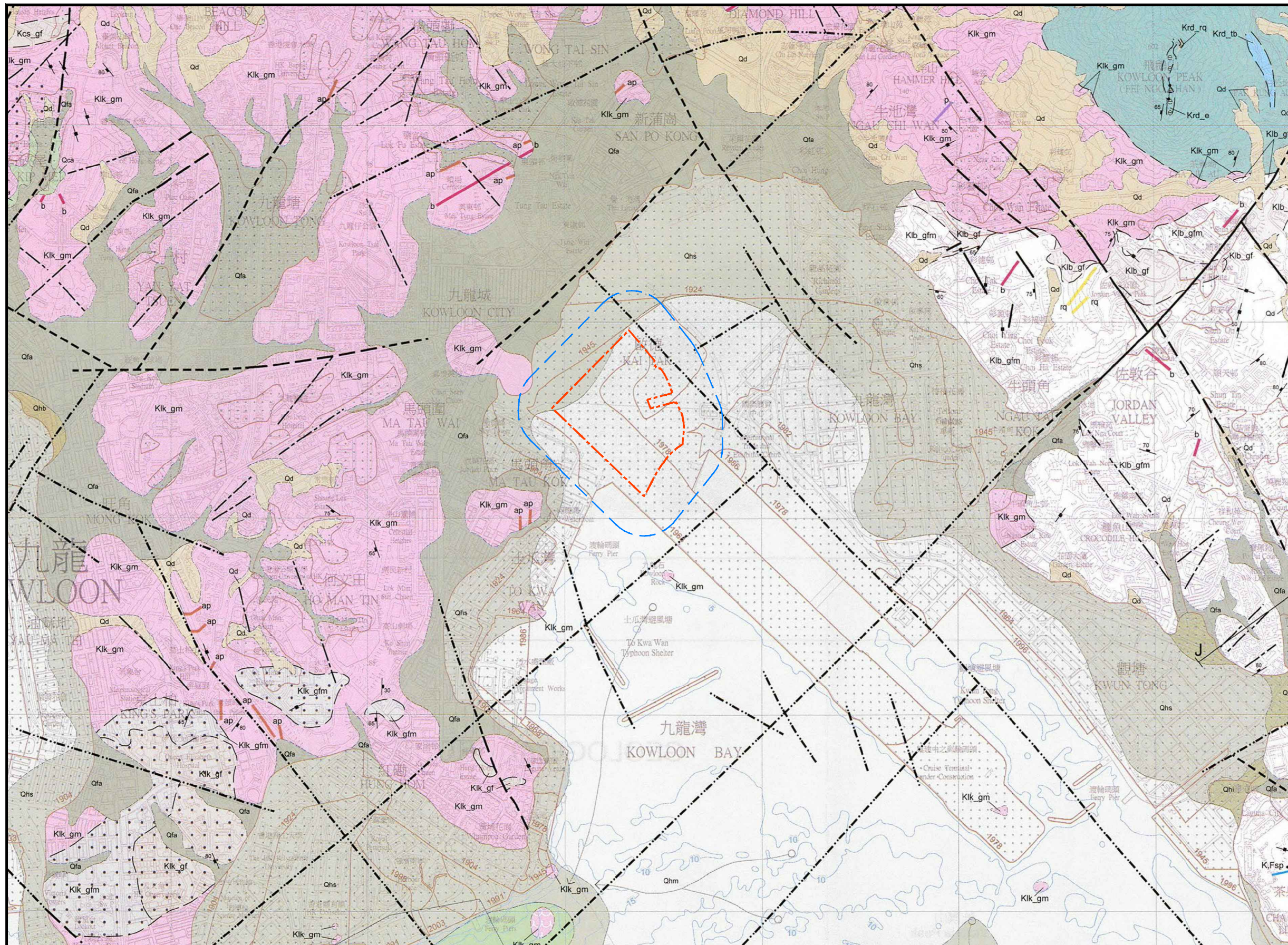
SHEET 3 OF 4

AECOM

DRGNO. 60102100/GAR_F3/F FIGURE 5
圖紙編號

DESIGNED BY 設計	CONTRACT NO. 合約編號	P.L. DIV. APPROVED 負責人
DRAWN BY 繪圖	STATUS 階段	
SCALE 比例		
DIMENSIONS ARE IN 尺寸單位		

© COPYRIGHT RESERVED
版權所有



AGE (Millions of years)

QUATERNARY

GENETIC CLASSIFICATION OR NAMED DIVISIONS

PRINCIPAL MATERIALS

JURASSIC TO CRETACEOUS

CRETACEOUS

JURASSIC

OFFSHORE SOLID GEOLOGY

GEOLOGICAL LINES

STRUCTURAL SYMBOLS

MINERAL, FOSSIL AND MISCELLANEOUS SYMBOLS

LEGEND:

- MPSC SITE BOUNDARY
- CHIA ASSESSMENT AREA

APPENDIX 12C2: GEOLOGICAL MAP (PART PLAN OF SHEET 11 SERIES HGM 20)



Drafting by	RW	11/15
Designed by	ML	11/15
Checked by	ML	11/15
Approved by	ML	11/15

SCALE: N.T.S @ A3 SIZE

PROJECT: CONSULTANCY SERVICES TO CARRY OUT ENVIRONMENT IMPACT ASSESSMENT AND TRAFFIC IMPACT ASSESSMENT STUDIES (THE MULTI-PURPOSE SPORTS COMPLEX AT KAI TAK AREA)

DRAWING NO: HA921/APPENDIX 12C2

REV: A