



Figure 12-3-2 An aerial photograph showing Kai Tak Airport in 1963 (Source: Lands Department)



Figure 12-3-3 An aerial photograph showing Kai Tak Airport in 1972 (Source: Lands Department)

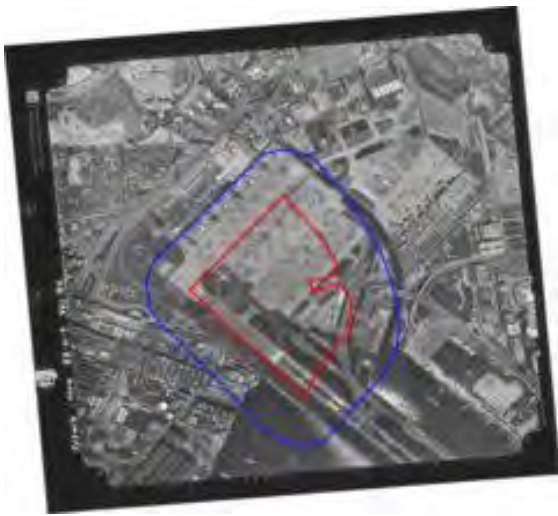


Figure 12-3-4 An aerial photograph showing Kai Tak Airport in 1988 (Source: Lands Department)



Figure 12-3-5 An aerial photograph showing the area of Old Kai Tak Airport on October 1998 (Source: Lands Department)



Figure 12-3-6 An aerial photograph showing the area of Old Kai Tak Airport on July 2000 (Source: Lands Department)



Figure 12-3-7 An aerial photograph showing the area of Old Kai Tak Airport on January 2014 (Source: Lands Department)

