







LEGEND:

-  RISING MAIN BY KTD
-  RISING MAIN BY OTHERS
-  GRAVITY SEWER AND MANHOLE
-  RETAIL AREA (INTERCEPTING SEWERS FROM RETAIL AREA IS PART OF THE BUILDING SEWERAGE SYSTEM WITHIN MSPC)
-  PROPOSED SEWERAGE ROUTING
-  FOULWATER DISCHARGE POINT

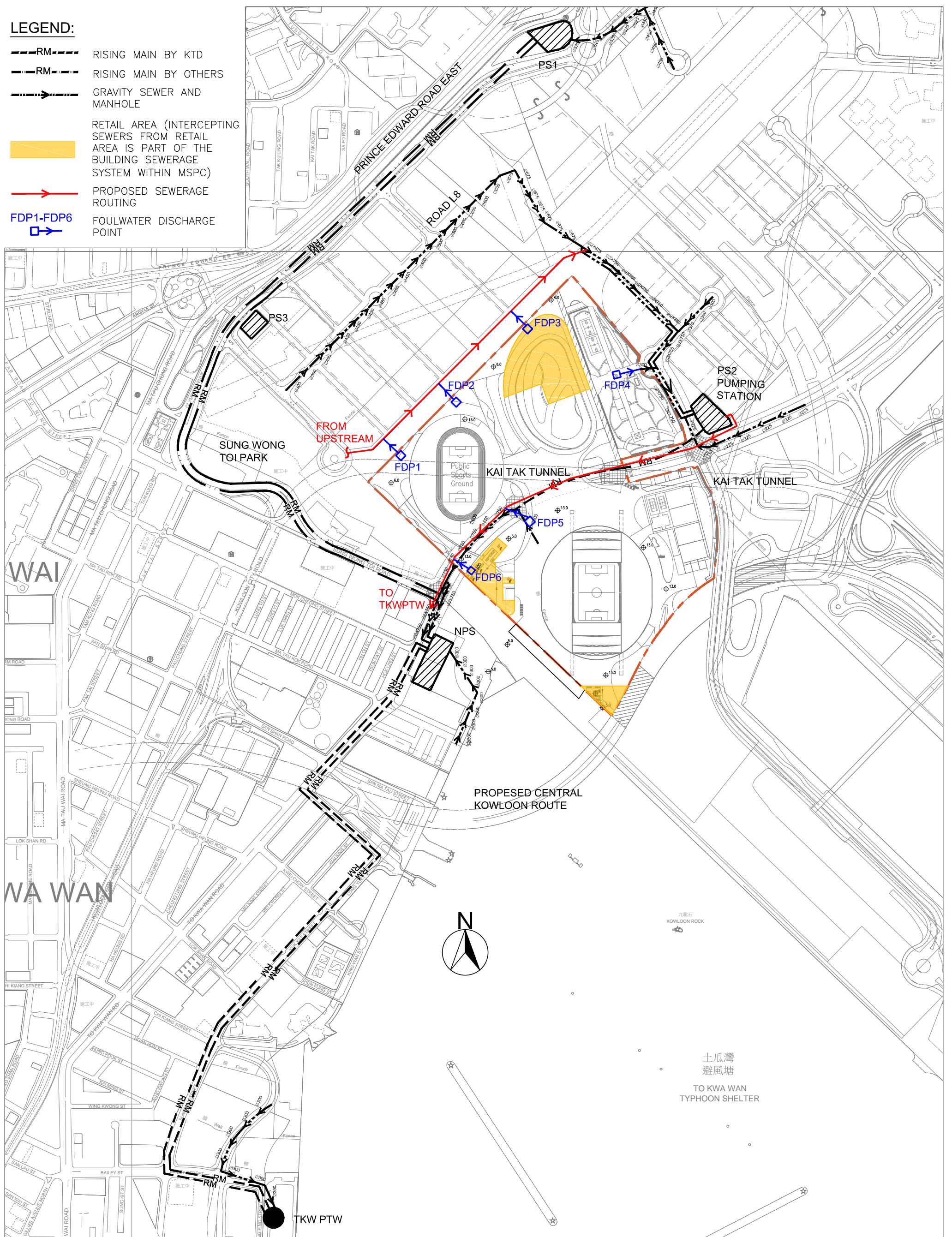


Figure 7-2-2: SEWERAGE LAYOUT PLAN-MPSC AND RELATED AREAS

(EXTRACT FROM KAI TAK DEVELOPMENT EIA REPORT)

PROJECT:		Kai Tak Multi-purpose Sports Complex	
DRAWING NO:		Figure 7-2-2	
REV:		-	



The joint venture of
Cinotech Consultants Ltd. and Maurice Lee & Associates Ltd.



Sub-Consultant
MVA
SYSTRA GROUP

Drafting by	SH	08/16
Designed by	RW	08/16
Checked by	ML	08/16
Approved by	ML	08/16

SCALE: N.T.S.