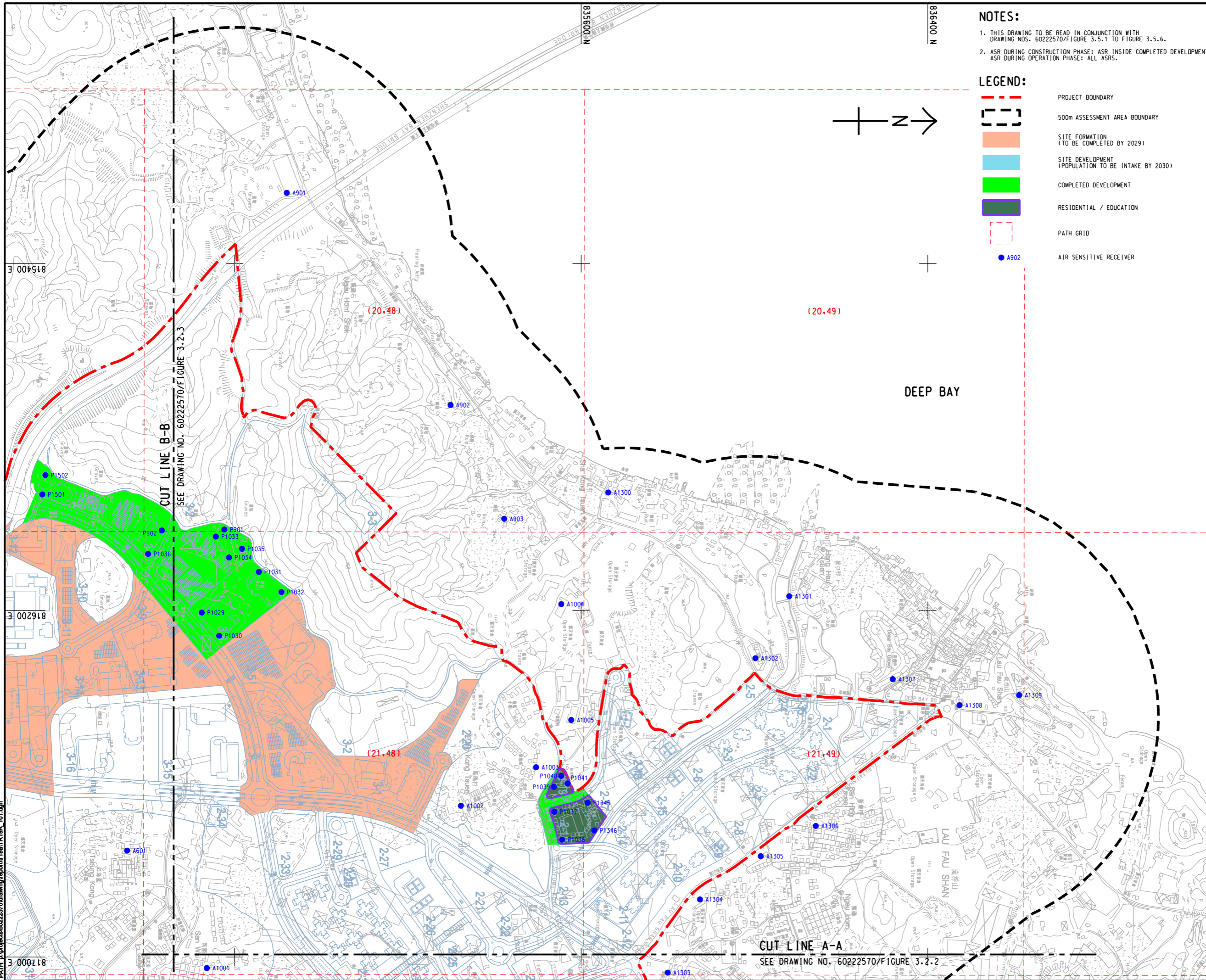


Pld File by: HUANGXW
 PATH: E:\projects\60222570\drawing\center\GnTR19A_101.dgn

Project Management Initials: Approved: Checked: Designer:

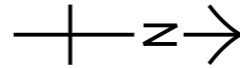


NOTES:

1. THIS DRAWING TO BE READ IN CONJUNCTION WITH DRAWING NOS. 60222570/FIGURE 3.5.1 TO FIGURE 3.5.6.
2. ASR DURING CONSTRUCTION PHASE: ASR INSIDE COMPLETED DEVELOPMENT. ASR DURING OPERATION PHASE: ALL ASRS.

LEGEND:

- PROJECT BOUNDARY
- 500m ASSESSMENT AREA BOUNDARY
- SITE FORMATION (TO BE COMPLETED BY 2029)
- SITE DEVELOPMENT (POPULATION TO BE INTAKE BY 2030)
- COMPLETED DEVELOPMENT
- RESIDENTIAL / EDUCATION
- PATH GRID
- AIR SENSITIVE RECEIVER



PROJECT
HUNG SHUI KIU NEW DEVELOPMENT AREA PLANNING AND ENGINEERING STUDY - INVESTIGATION

CLIENT
 土木工務拓展署
 Civil Engineering and Development Department

規劃署
 Planning Department

CONSULTANT
 AECOM Asia Company Ltd.
 www.aecom.com

SUB-CONSULTANTS
 分判工程顧問公司

ISSUE/REVISION
 修訂

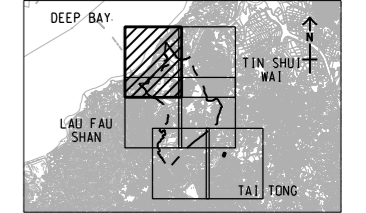
IR/ 修訂	DATE 日期	DESCRIPTION 內容摘要	CHK. 核對

STATUS
 階段

SCALE
 比例: A3 1:8000

DIMENSION UNIT
 尺寸單位: METRES

KEY PLAN A3 1:300000



PROJECT NO.
 項目編號: 60222570

AGREEMENT NO.
 協議編號: CE2/2011 (CE)

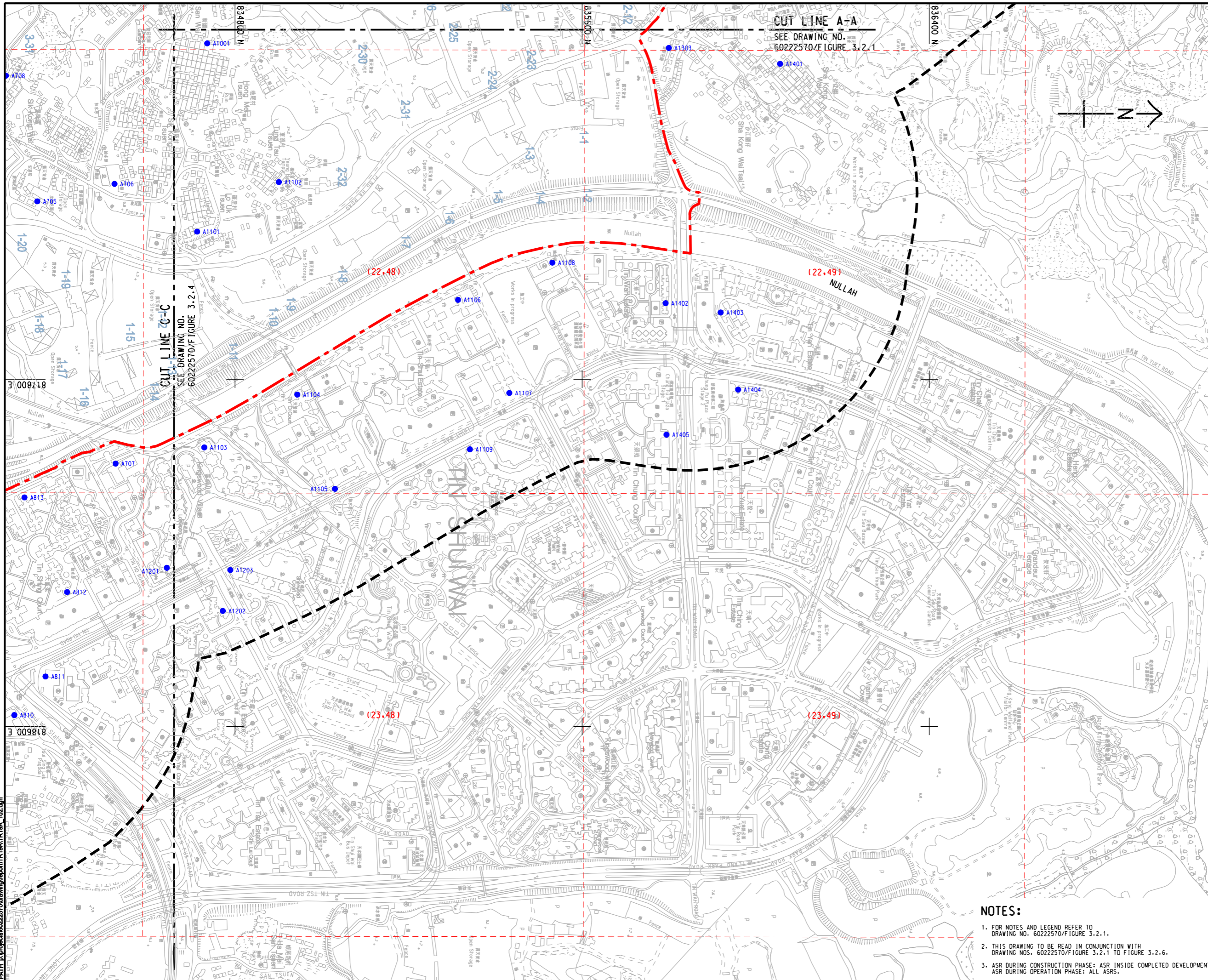
SHEET TITLE
 圖紙名稱: LOCATION OF REPRESENTATIVE AIR SENSITIVE RECEIVER (YEAR 2019 - 2030)

SHEET 1 OF 6

SHEET NUMBER
 圖紙編號: 60222570/TR19A/FIGURE 3.2.1

This drawing has been prepared for the use of AECOM's client. It may not be used, modified, reproduced or relied upon by third parties, except as approved by AECOM or as required by law. AECOM accepts no responsibility, and denies any liability whatsoever, for any party that uses or relies on this drawing without AECOM's express written consent. Do not scale this document. All measurements must be obtained from the stated dimensions.

ISO A1 594mm x 841mm
 Approved:
 Checked:
 Designer:
 Project Management Initials:
 Pld File by: HUANGXW
 PATH: E:\projects\60222570\drawing\tr19a\tr19a_102.dgn



CUT LINE A-A
 SEE DRAWING NO.
 60222570/FIGURE 3.2.1

CUT LINE C-C
 SEE DRAWING NO.
 60222570/FIGURE 3.2.4

AECOM

PROJECT
HUNG SHUI KIU NEW DEVELOPMENT AREA PLANNING AND ENGINEERING STUDY - INVESTIGATION

CLIENT
 CEDD
 土木工程拓展署
 Civil Engineering and Development Department
 規劃署
 Planning Department

CONSULTANT
 工務顧問公司
 AECOM Asia Company Ltd.
 www.aecom.com

SUB-CONSULTANTS
 分判工務顧問公司

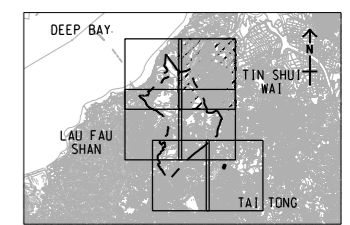
ISSUE/REVISION
 修訂

NO.	DATE	DESCRIPTION	CHK.

STATUS
 階段

SCALE
 比例
 A3 1 : 8000
 DIMENSION UNIT
 尺寸單位
 METRES

KEY PLAN
 索引圖
 A3 1 : 300000



PROJECT NO.
 項目編號
 60222570
 AGREEMENT NO.
 協議編號
 CE2/2011 (CE)

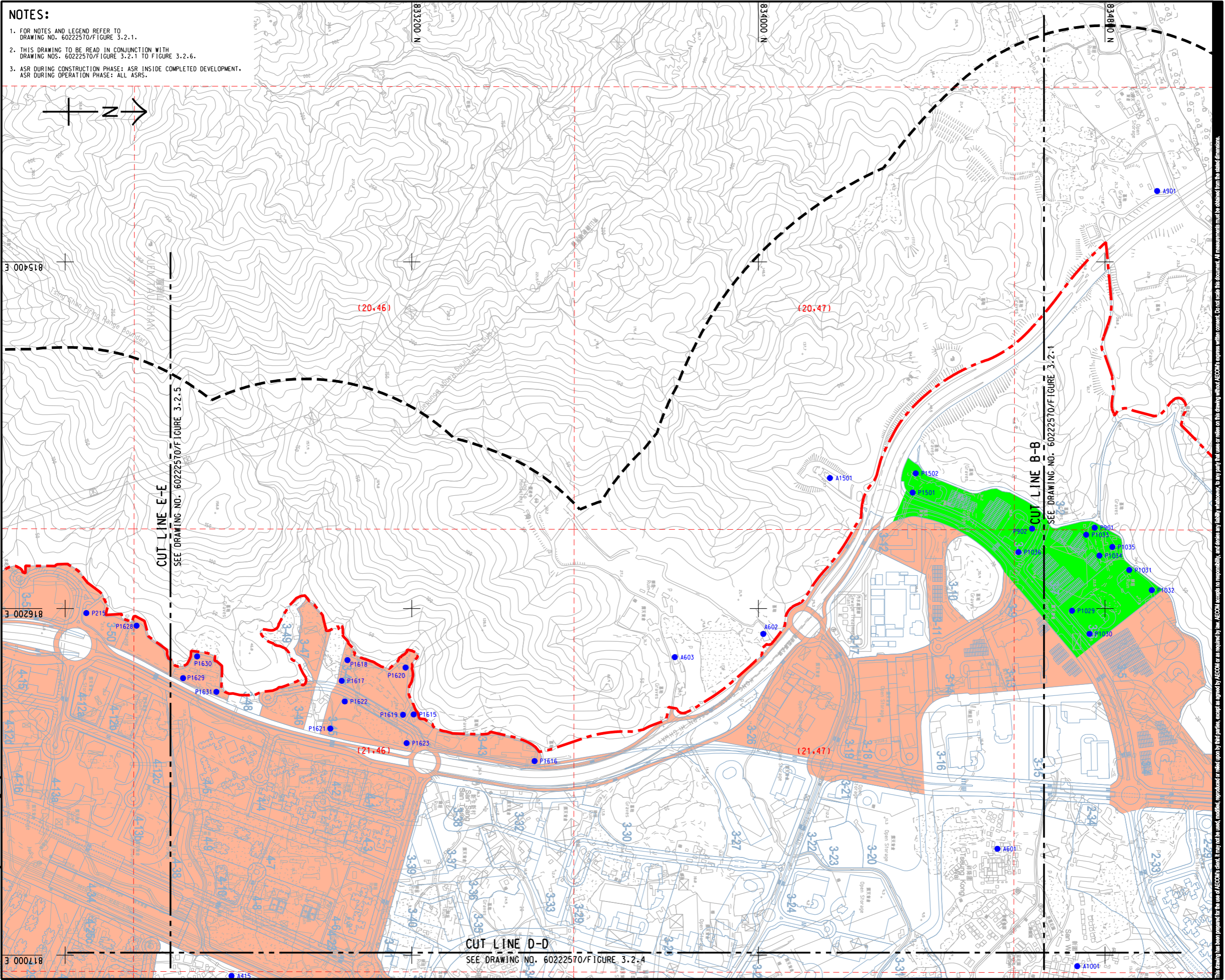
SHEET TITLE
 圖紙名稱
 LOCATION OF REPRESENTATIVE AIR SENSITIVE RECEIVER (YEAR 2019 - 2030)

SHEET NUMBER
 圖紙編號
 60222570/TR19A/FIGURE 3.2.2

- NOTES:
- FOR NOTES AND LEGEND REFER TO DRAWING NO. 60222570/FIGURE 3.2.1.
 - THIS DRAWING TO BE READ IN CONJUNCTION WITH DRAWING NOS. 60222570/FIGURE 3.2.1 TO FIGURE 3.2.6.
 - ASR DURING CONSTRUCTION PHASE: ASR INSIDE COMPLETED DEVELOPMENT. ASR DURING OPERATION PHASE: ALL ASRS.

This drawing has been prepared for the use of AECOM's client. It may not be used, modified, reproduced or relied upon by third parties, except as required by law. AECOM accepts no responsibility, and denies any liability whatsoever, for any party that uses or relies on this drawing without AECOM's express written consent. Do not scale this document. All measurements must be obtained from the related dimensions.

ISO A1 594mm x 841mm
 Approved:
 Checked:
 Designer:
 Project Management Initials:
 Pld File by: HUANGXW
 PATH: P:\PROJECTS\60222570\DRAWING\REPORT\TR19A\TR19A_103.dgn



NOTES:

1. FOR NOTES AND LEGEND REFER TO DRAWING NO. 60222570/FIGURE 3.2.1.
2. THIS DRAWING TO BE READ IN CONJUNCTION WITH DRAWING NOS. 60222570/FIGURE 3.2.1 TO FIGURE 3.2.6.
3. ASR DURING CONSTRUCTION PHASE: ASR INSIDE COMPLETED DEVELOPMENT.
 ASR DURING OPERATION PHASE: ALL ASRS.



AECOM

PROJECT
 項目
HUNG SHUI KIU NEW DEVELOPMENT AREA PLANNING AND ENGINEERING STUDY - INVESTIGATION

CLIENT
 業主

CEDD
 土木工程拓展署
 Civil Engineering and Development Department

Planning Department

CONSULTANT
 工程顧問公司
 AECOM Asia Company Ltd.
 www.aecom.com

SUB-CONSULTANTS
 分判工程顧問公司

ISSUE/REVISION
 修訂

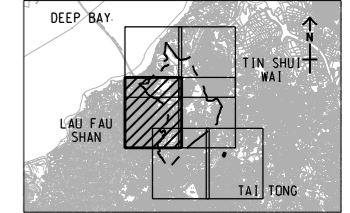
NO.	DATE	DESCRIPTION	CHK.

STATUS
 階段

SCALE
 比例
 A3 1 : 8000

DIMENSION UNIT
 尺寸單位
 METRES

KEY PLAN
 索引圖
 A3 1 : 300000



PROJECT NO.
 項目編號
 60222570

AGREEMENT NO.
 協議編號
 CE2/2011 (CE)

SHEET TITLE
 圖紙名稱
 LOCATION OF REPRESENTATIVE AIR SENSITIVE RECEIVER (YEAR 2019 - 2030)

SHEET NUMBER
 圖紙編號
 60222570/TR19A/FIGURE 3.2.3

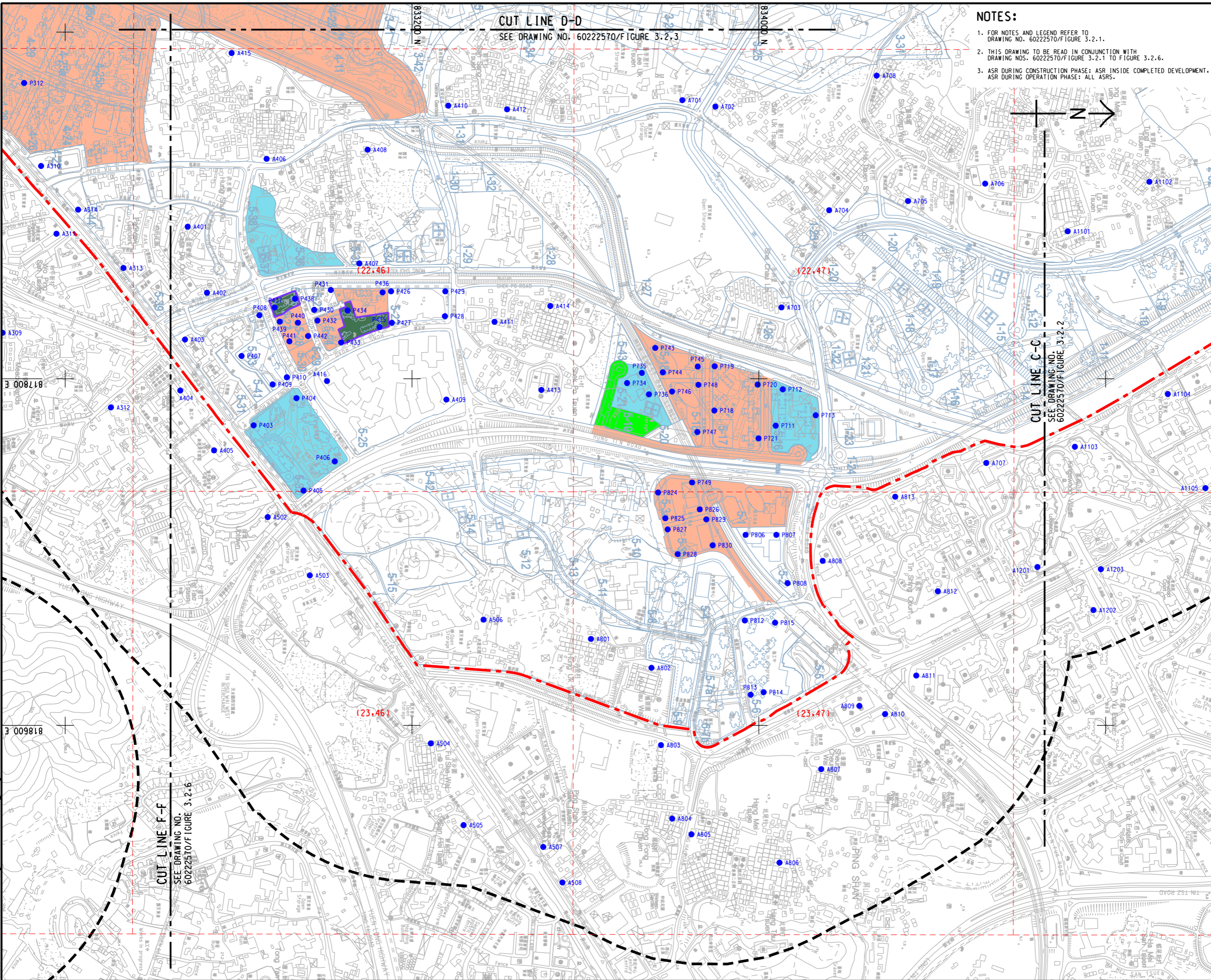
SHEET 3 OF 6

This drawing has been prepared for the use of AECOM's client. It may not be used, modified, reproduced or relied upon by third parties, except as agreed by AECOM or as required by law. AECOM accepts no responsibility, and disclaims any liability whatsoever, for any party that uses or relies on this drawing without AECOM's express written consent. Do not scale this document. All measurements must be obtained from the stated dimensions.

CUT LINE D-D
SEE DRAWING NO. 60222570/FIGURE 3.2.3

NOTES:

- FOR NOTES AND LEGEND REFER TO DRAWING NO. 60222570/FIGURE 3.2.1.
- THIS DRAWING TO BE READ IN CONJUNCTION WITH DRAWING NOS. 60222570/FIGURE 3.2.1 TO FIGURE 3.2.6.
- ASR DURING CONSTRUCTION PHASE: ASR INSIDE COMPLETED DEVELOPMENT.
ASR DURING OPERATION PHASE: ALL ASRS.



AECOM

PROJECT
HUNG SHUI KIU NEW DEVELOPMENT AREA PLANNING AND ENGINEERING STUDY - INVESTIGATION

CLIENT
CEDD
土木工程拓展署
Civil Engineering and Development Department
規劃署
Planning Department

CONSULTANT
AECOM Asia Company Ltd.
www.aecom.com

SUB-CONSULTANTS
分判工程顧問公司

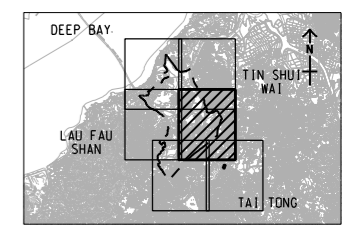
ISSUE/REVISION

NO.	DATE	DESCRIPTION	CHK.

STATUS

SCALE
A3 1:8000
KEY PLAN A3 1:300000

DIMENSION UNIT
METRES



PROJECT NO.
60222570

AGREEMENT NO.
CE2/2011 (CE)

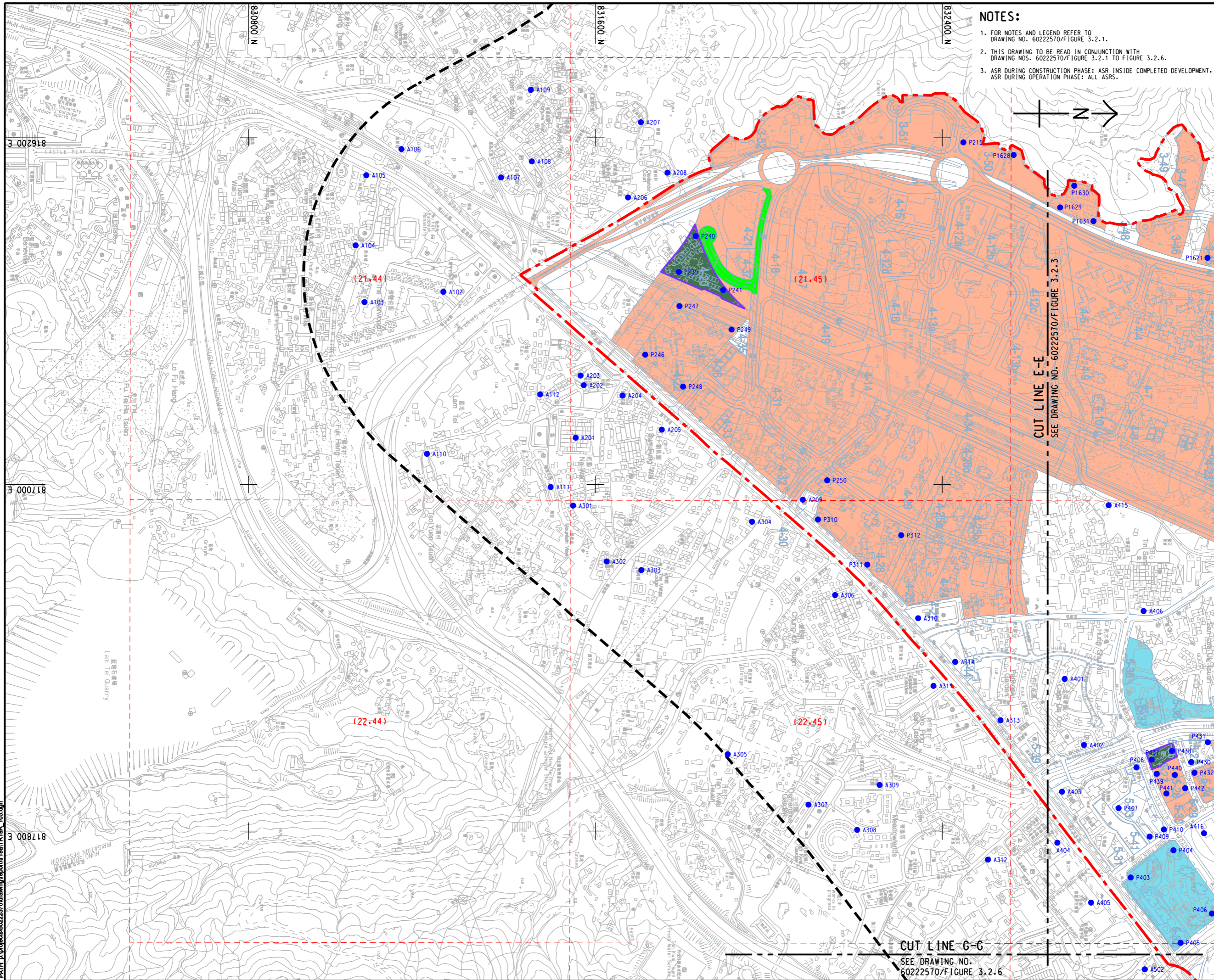
SHEET TITLE
LOCATION OF REPRESENTATIVE AIR SENSITIVE RECEIVER (YEAR 2019 - 2030)

SHEET 4 OF 6

SHEET NUMBER
60222570/TR19A/FIGURE 3.2.4

This drawing has been prepared for the use of AECOM's client. It may not be used, modified, reproduced or relied upon by third parties, except as approved by AECOM or as required by law. AECOM accepts no responsibility, and denies any liability whatsoever, for any party that uses or relies on this drawing without AECOM's express written consent. Do not scale this document. All measurements must be obtained from the stated dimensions.

ISO A1 594mm x 841mm
Approved:
Checked:
Designer:
Project Management Initials:
Pld File by: HUANGXW
PATH: E:\projects\60222570\drawing\center\GnTR19A_105.dgn



1. FOR NOTES AND LEGEND REFER TO DRAWING NO. 60222570/FIGURE 3.2.1.
2. THIS DRAWING TO BE READ IN CONJUNCTION WITH DRAWING NOS. 60222570/FIGURE 3.2.1 TO FIGURE 3.2.6.
3. ASR DURING CONSTRUCTION PHASE: ASR INSIDE COMPLETED DEVELOPMENT. ASR DURING OPERATION PHASE: ALL ASRS.



PROJECT
項目
HUNG SHUI KIU NEW DEVELOPMENT AREA PLANNING AND ENGINEERING STUDY - INVESTIGATION

CLIENT
業主
CEDD
土木工程拓展署
Civil Engineering and Development Department
Planning Department

CONSULTANT
工程顧問公司
AECOM Asia Company Ltd.
www.aecom.com

SUB-CONSULTANTS
分判工程顧問公司

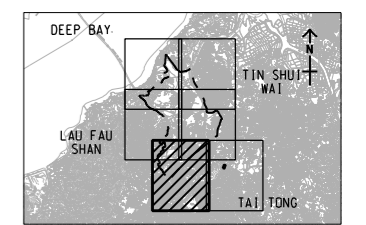
ISSUE/REVISION
修訂

IR	DATE	DESCRIPTION	CHK.

STATUS
階段

SCALE
比例
A3 1 : 8000
DIMENSION UNIT
尺寸單位
METRES

KEY PLAN
索引圖
A3 1 : 300000



PROJECT NO.
項目編號
60222570
AGREEMENT NO.
協議編號
CE2/2011 (CE)

SHEET TITLE
圖紙名稱
LOCATION OF REPRESENTATIVE AIR SENSITIVE RECEIVER (YEAR 2019 - 2030)
SHEET NUMBER
圖紙編號
60222570/TR19A/FIGURE 3.2.5

This drawing has been prepared for the use of AECOM's client. It may not be used, modified, reproduced or relied upon by third parties, except as required by law. AECOM accepts no responsibility, and denies any liability whatsoever, to any party that uses or relies on this drawing without AECOM's express written consent. Do not scale this document. All measurements must be obtained from the stated dimensions.

ISO A1 594mm x 841mm
Approved:
Checked:
Designer:
Project Management Initials:
Pld File by: HUANGXW
PATH: P:\PROJECTS\60222570\DRAWING\REPORT\TR19A\TR19A_106.dgn

NOTES:

1. FOR NOTES AND LEGEND REFER TO DRAWING NO. 60222570/FIGURE 3.2.1.
2. THIS DRAWING TO BE READ IN CONJUNCTION WITH DRAWING NOS. 60222570/FIGURE 3.2.1 TO FIGURE 3.2.6.
3. ASR DURING CONSTRUCTION PHASE: ASR INSIDE COMPLETED DEVELOPMENT.
ASR DURING OPERATION PHASE: ALL ASRS.



818600 E

819400 E

820200 E

831600 N

832400 N

CUT LINE G-G
SEE DRAWING NO. 60222570/FIGURE 3.2.5

CUT LINE F-F
SEE DRAWING NO. 60222570/FIGURE 3.2.4

(23.44)

(23.45)



PROJECT
項目
HUNG SHUI KIU NEW DEVELOPMENT AREA PLANNING AND ENGINEERING STUDY - INVESTIGATION

CLIENT
業主
CEDD
土木工程拓展署
Civil Engineering and Development Department
Planning Department

CONSULTANT
工程顧問公司
AECOM Asia Company Ltd.
www.aecom.com

SUB-CONSULTANTS
分判工程顧問公司

ISSUE/REVISION
發行

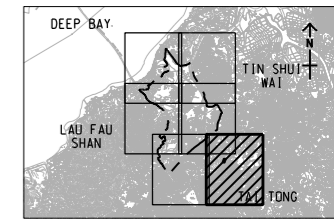
IR	DATE	DESCRIPTION	CHK.
發行	日期	內容摘要	校核

STATUS
階段

SCALE
比例
DIMENSION UNIT
尺寸單位

A3 1 : 8000 METRES

KEY PLAN A3 1 : 300000



PROJECT NO.
項目編號
60222570

AGREEMENT NO.
協議編號
CE2/2011 (CE)

SHEET TITLE
圖紙名稱

LOCATION OF REPRESENTATIVE AIR SENSITIVE RECEIVER (YEAR 2019 - 2030)

SHEET 6 OF 6

SHEET NUMBER
圖紙編號

60222570/TR19A/FIGURE 3.2.6

This drawing has been prepared for the use of AECOM's client. It may not be used, modified, reproduced or relied upon by third parties, except as approved by AECOM or as required by law. AECOM accepts no responsibility, and denies any liability whatsoever, to any party that uses or relies on this drawing without AECOM's express written consent. Do not scale this document. All measurements must be obtained from the related dimensions.